

## Kaira Loro - Cultural Center in Senegal

### To Be

Our project for the cultural center in the city of Sedhiou aims to create a space in which cultures can be handed down and disseminated.

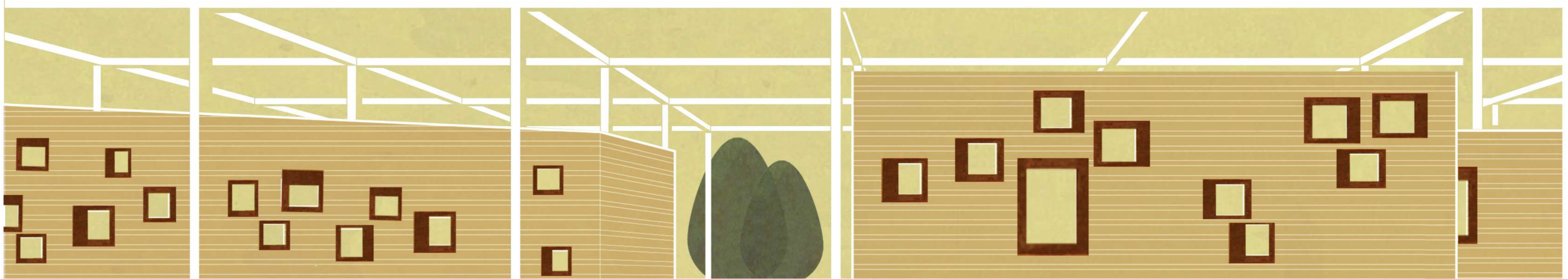
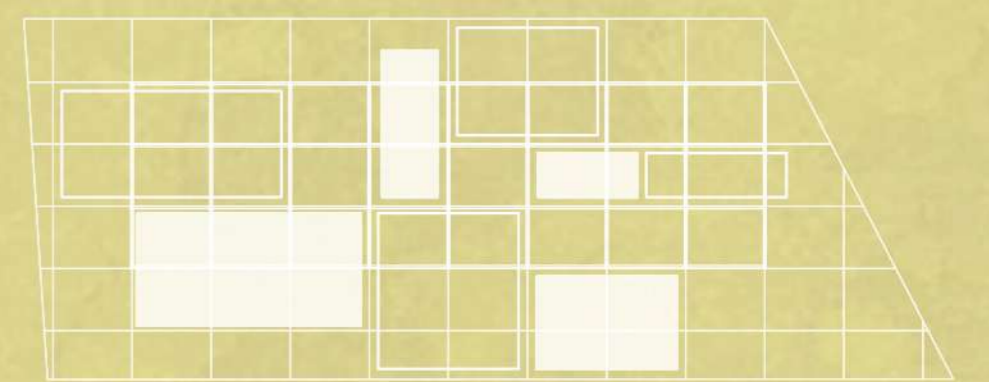
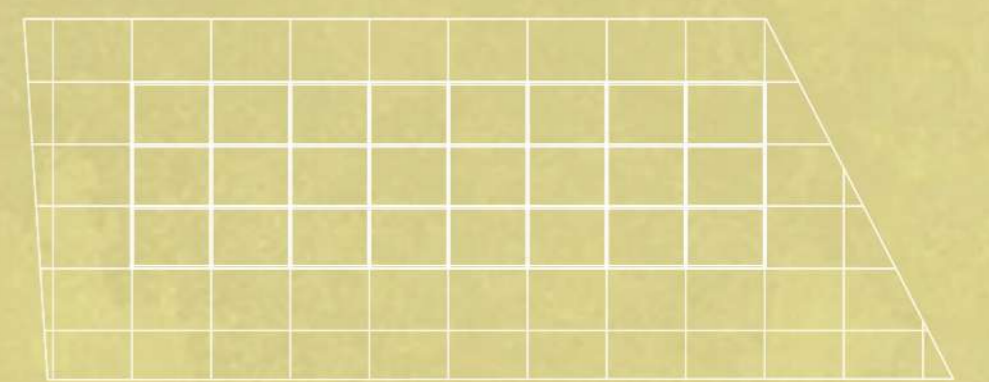
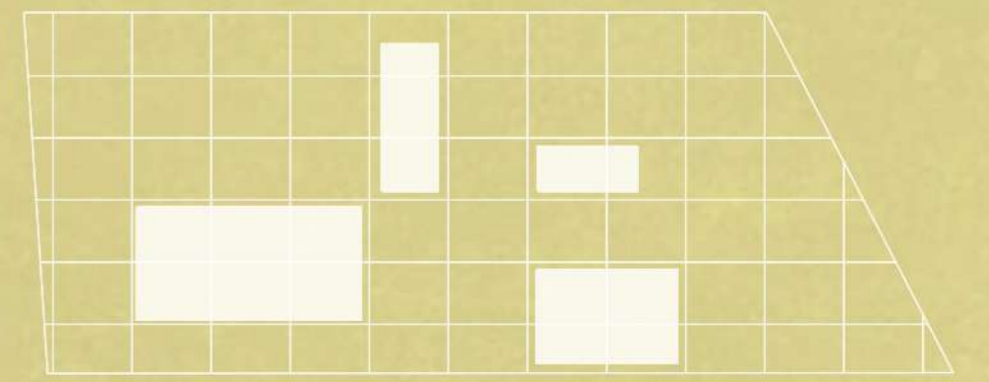
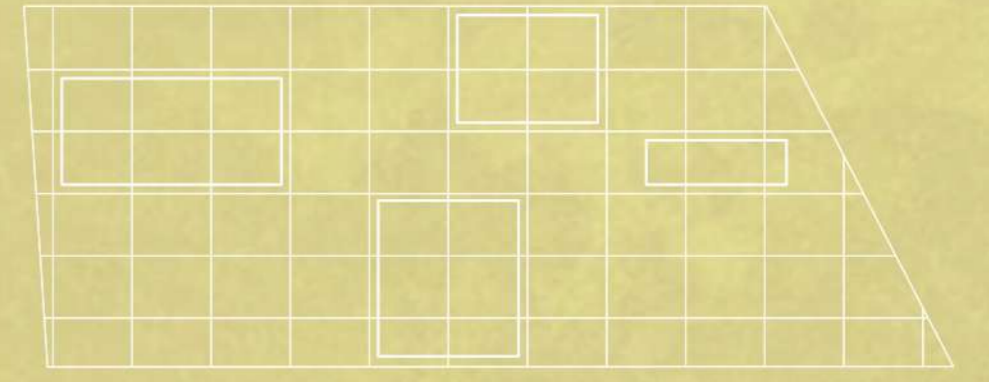
The goal is to devise a sustainable architecture that promotes the teaching and conservation of traditions through the use of materials found in the areas surrounding the area taken into consideration.

An architecture that must be socially and economically sustainable, given the use of the various activities that take place in the region, such as agriculture and crafts. In the Sedhiou region there are many varieties of tree species used for the production of building materials; the processing of fabrics is also important, through techniques handed down for centuries.

Our project develops longitudinally along the lot, where we have worked by adding and subtracting volumes. Addition as regards the four volumes with the functions of the buildings while subtracting for the preparation of external spaces such as gardens and gardens. Above these volumes we went to insert a large wooden structure.

The covered area is 518 square meters while the open space is 397.7 square meters.

In the four interiors we have designed exhibition spaces, small offices, toilets and spaces where the traditions and culture of the place are handed down and learned. Outside four excavations characterize the space around with plantations of fruit trees and the reuse of materials such as wood for furnishings.





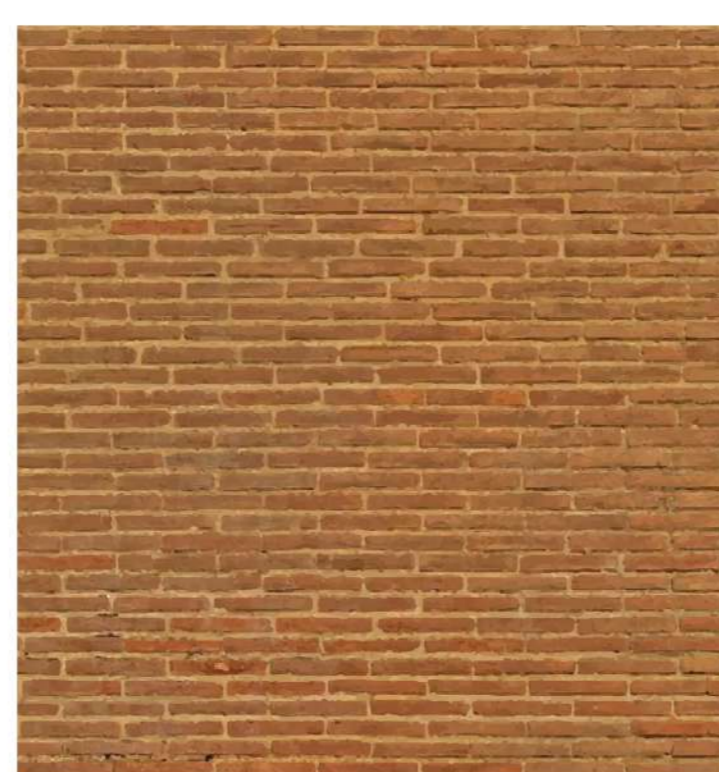
MATERIALS



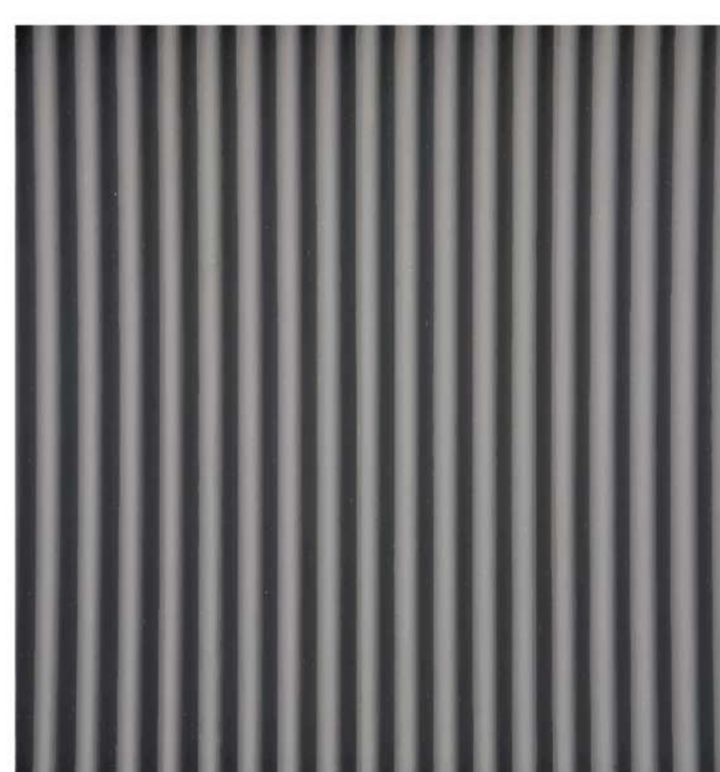
Local sand ground



Soil and shells



Brick building structure



Sheet for external covering



Wood for frame structure and external arrangement



African mats for outdoor coverage

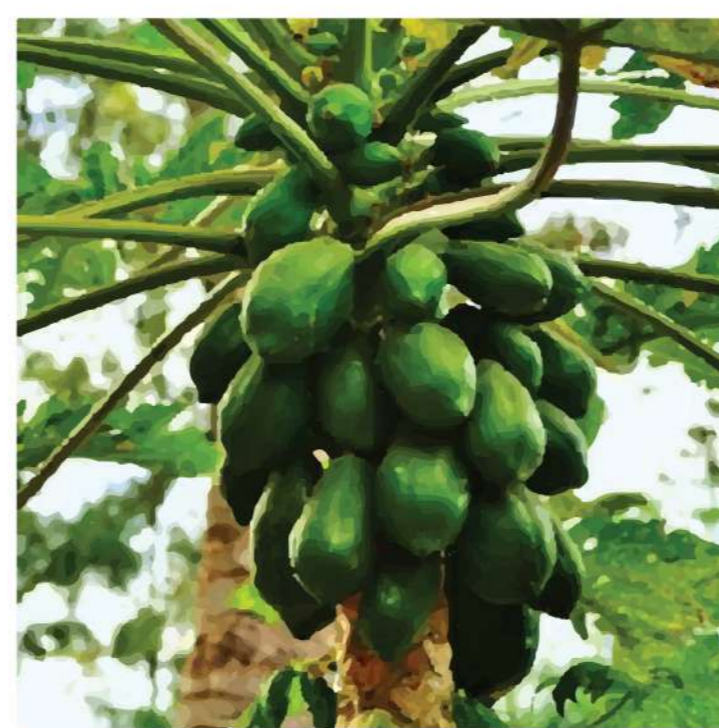
VEGETATION



Coconut



Banana



Papaya



Ginger



Coffee



Mint

**KAIRA LOORO, CULTURAL CENTER IN SENEGAL**

**AREA PLAN**

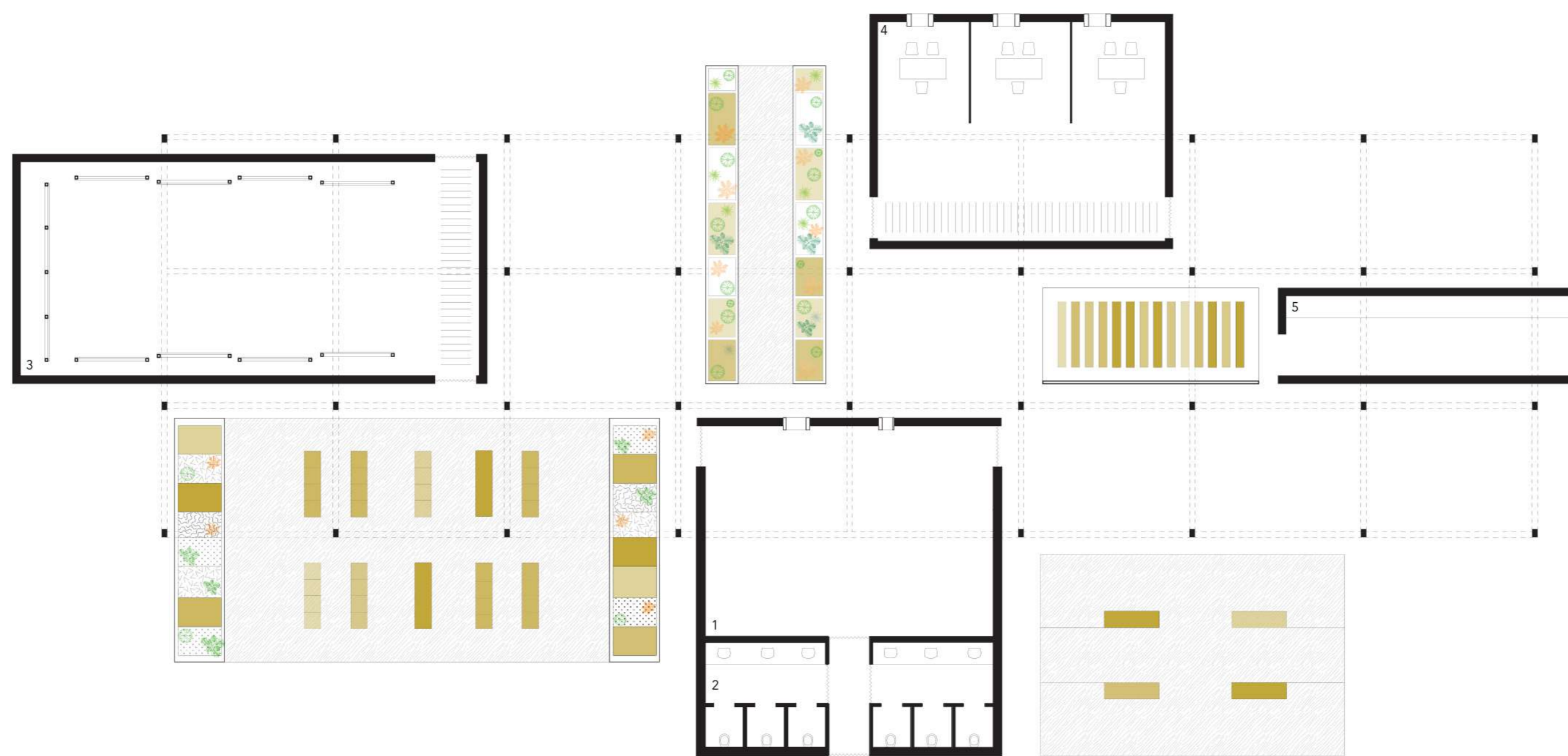
The planning of a Cultural Center for the city of Sedhiou tries to reach the goal of creating a location where local cultures may have the chance to be told, passed on and preserved.

The goal is to design a sustainable architecture that promotes the teaching and conservation of traditions through a contemporary language.

Social sustainability, given by the main activities in the region, such as agriculture and crafts.

Economic sustainability, given by the use of materials found in the surrounding areas.

Environmental sustainability, given by the use of passive energy systems.

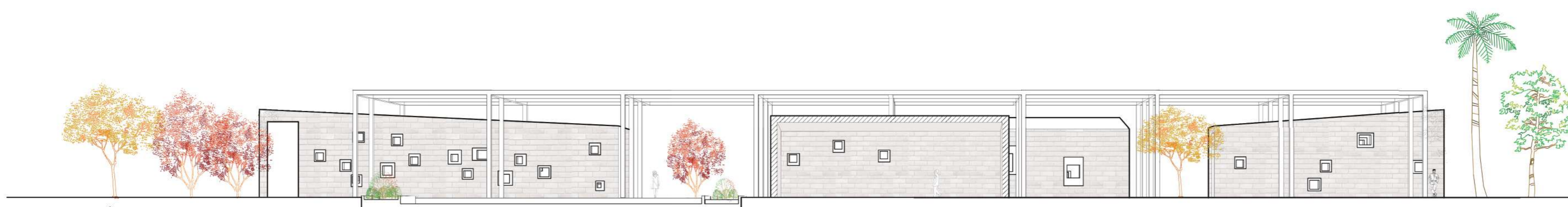


- 1 - Shows area  
80,55 mq
- 2 - Toilette  
40,33 mq
- 3 - Training space  
130,65 mq
- 4 - Offices  
82,95 mq
- 5 - Exhibition space  
30,45 mq

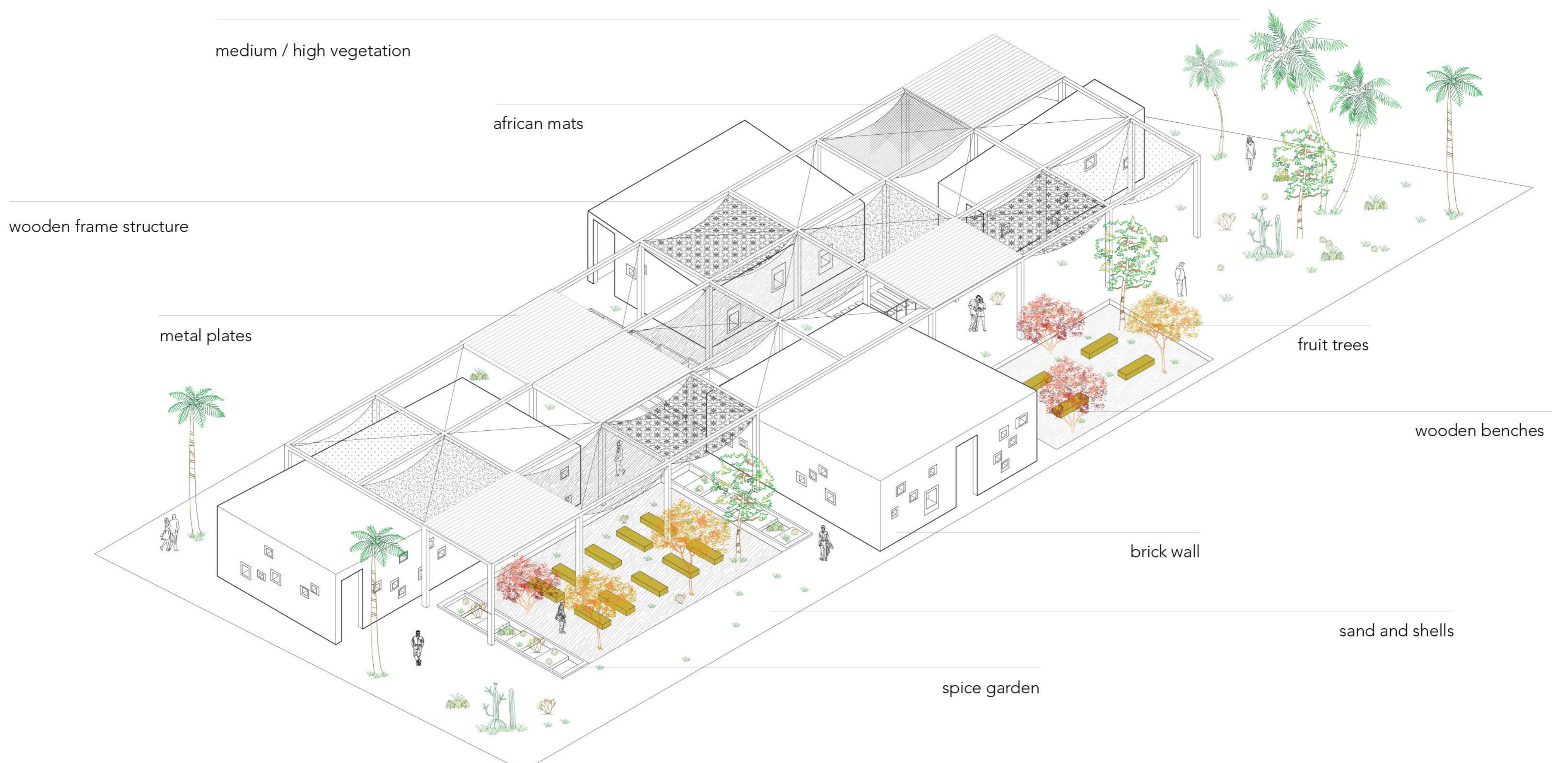
PLAN, scale 1:200

Surfaces for the indoor area: 518 mq  
 Surfaces for the open space area: 397,7 mq

Three main designed areas for Education, Exhibitions and Performances. Furthermore, two areas for Bureau and Restrooms.



section, scale 1:200



medium / high vegetation

african mats

wooden frame structure

metal plates

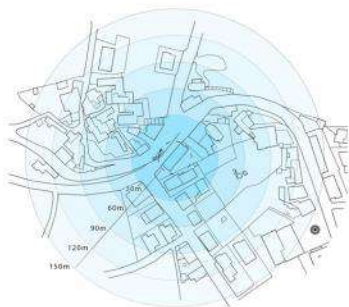
fruit trees

wooden benches

brick wall

sand and shells

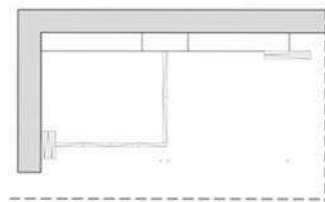
spice garden



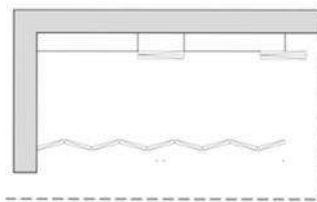
Localizzazione del lotto: Torricella Sicura (TE)  
 Superficie copertura: 228 mq  
 Superficie calpestabile: 182 mq  
 Numero piani: 1

Funzione: Centro di accoglienza  
 Corpi di fabbrica: 3 affiancati e comunicanti  
 Numero migranti: massimo 26

Trasformabilità



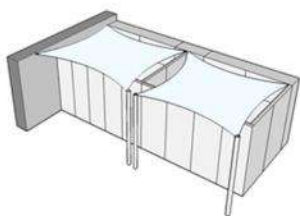
Composizione 1



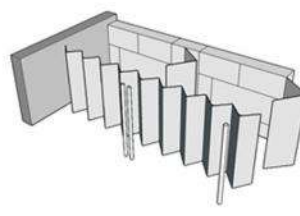
Composizione 2



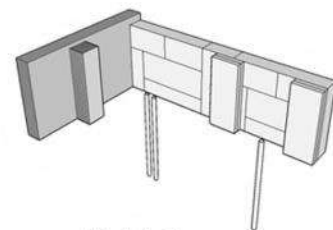
Composizione 3



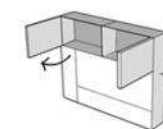
Modulo A



Processo costruttivo



Modulo B



A + B = C



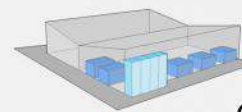
A

+



B

=



C

IL SISTEMA EDILIZIO

- 7 Copertura:  
 - Rivestimento esterno in lamiera ondulata  
 - Dispositivo passivo con impianto in pannelli solari

- 6 Sezione significativa:  
 A-A  
 scala 1:200

- 5 Sistema degli spazi:  
 - Unità abitative  
 - Pannelli OSB  
 - Rivestimento esterno di intonaco

- 4 Involucro:  
 - Rivestimento in lamiera ondulata  
 - Facciata continua in vetro con intercapedine d'aria

- 3 Prospetto significativo:  
 scala 1:200

- 2 Sistema costruttivo:  
 - Travi e pilastri HEA in acciaio (Igest)  
 - Travi in legno massiccio (Igest)  
 - Preesistenza in laterocemento (host)

- 1 Pianta:  
 Scala 1:200  
 - Unità abitative  
 - Servizi  
 - Soggiorno e cucina  
 - Locale tecnico

- LEGENDA  
 1 STRUTTURA  
 1.1 Preesistenza in laterocemento 450mm  
 1.2 Sistema di travi in legno massiccio 300mm x 300mm e pilastri HEA in acciaio 350mm x 300mm

- 2 CHIUSURA VERTICALE OPACA  
 2.1 Rivestimento interno di intonaco in calce e gesso 2mm (CAPAROL)  
 Isolante in vetro cellulare 100mm (FOAMGLASS)  
 Blocco in latero cemento 450mm  
 Rivestimento esterno in lamiera ondulata 40mm (ITALPANNELLI)  
 2.2 Rivestimento interno di intonaco in calce e gesso 2mm (CAPAROL)  
 Isolante in vetro cellulare 200mm (FOAMGLASS)  
 Rivestimento esterno di intonaco in calce e gesso 2mm (CAPAROL)  
 2.3 Rivestimento interno di intonaco in calce e gesso 2mm (CAPAROL)  
 Pannello OSB di abete 20mm (ABRUZZO LEGNAMI)  
 Isolante in vetro cellulare 100mm (FOAMGLASS)  
 Pannello OSB di abete 40mm (ABRUZZO LEGNAMI)  
 Intercapedine d'aria verticale 10mm  
 Rivestimento esterno in lamiera ondulata 40mm (ITALPANNELLI)

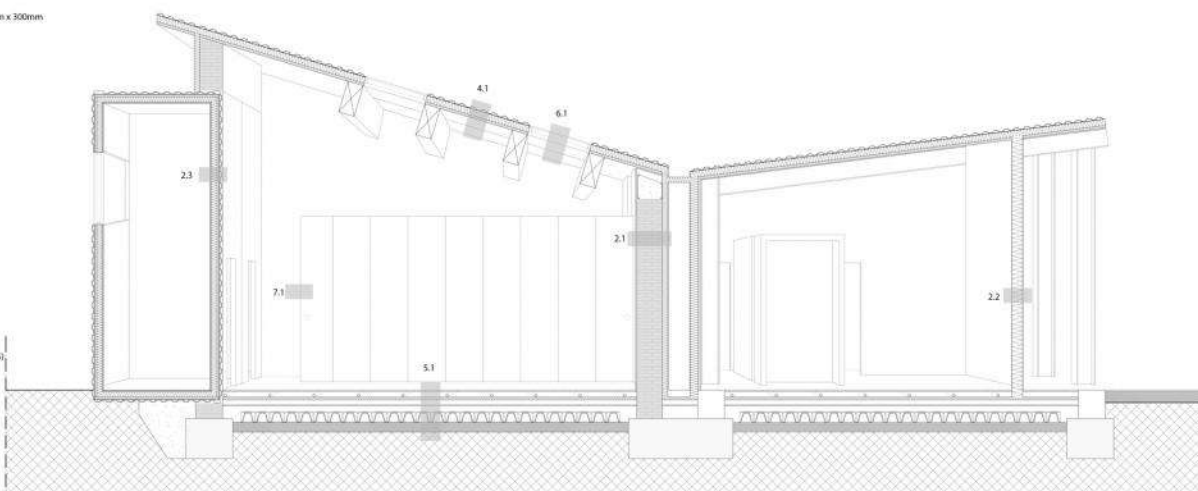
- 3 CHIUSURA VERTICALE TRASPARENTE  
 3.1 Facciata continua: vetro camera triplo con intercapedine gas (aria)  
 4/12/4/12/4mm (SAINT GOBAIN-SOG COOL LITE SKN)

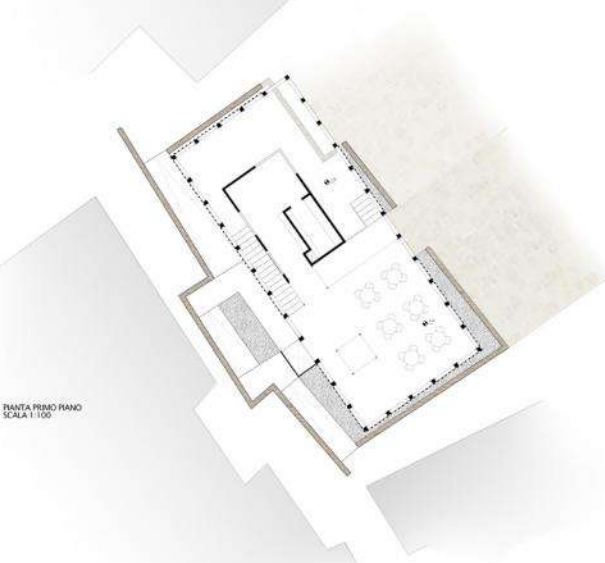
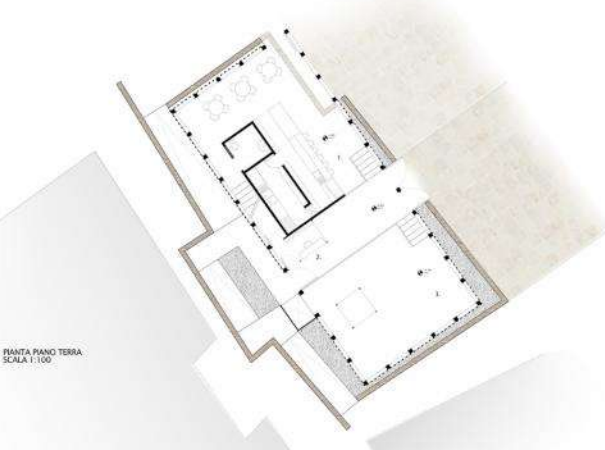
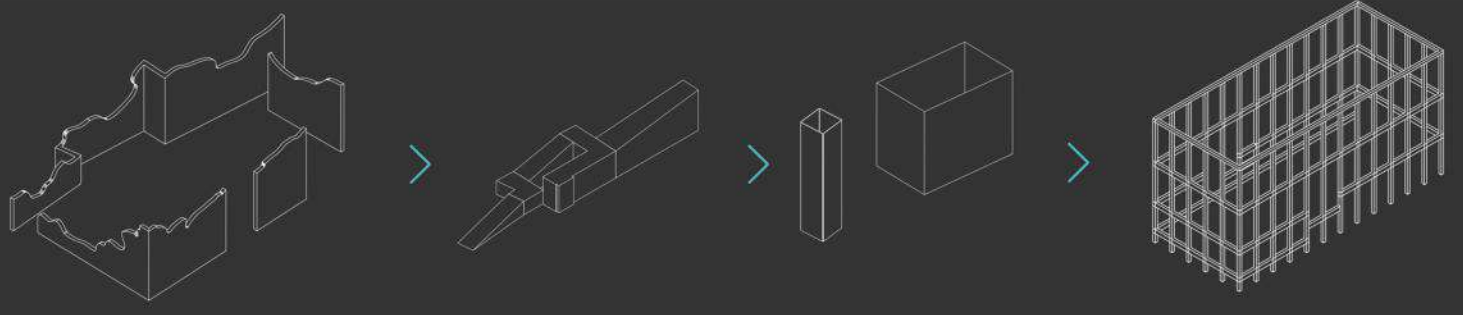
- 4 CHIUSURA ORIZZONTALE SUPERIORE OPACA  
 4.1 Rivestimento esterno in lamiera ondulata 40mm (ITALPANNELLI)  
 Strato impermeabilizzante 4mm (DERGIGUM)  
 Isolante in vetro cellulare 100mm (FOAMGLASS)  
 Pannello OSB di abete 20mm (ABRUZZO LEGNAMI)  
 Travi in legno 500mm (ABRUZZO LEGNAMI)

- 5 CHIUSURA ORIZZONTALE INFERIORE  
 5.1 Rivestimento interno in piastrelle di ceramica 10mm (ACTIVE)  
 Massetto di alleggerimento e livellamento con impianto radiante 100mm (EDIL CLASS)  
 Isolante in vetro cellulare 50mm (FOAMGLASS)  
 Massetto di alleggerimento e livellamento 100mm (EDIL CLASS)  
 Strato impermeabilizzante 4mm (DERGIGUM)  
 Getto di completamento in Cx 14mm (EDIL CASA)  
 Vespaio in PVC 50mm (SAMBE PLAST)  
 Intercapedine d'aria 600mm  
 Soletta in Cx 180mm (EDIL CASA)

- 6 CHIUSURA ORIZZONTALE TRASPARENTE  
 6.1 Lucerna: vetro camera triplo 4/12/4/12/4mm con intercapedine gas (aria)  
 (SAINT GOBAIN-PLANTHERMA ONE INVOG)

- 7 PARTIZIONE VERTICALE OPACA  
 7.1 Rivestimento interno di intonaco in calce e gesso 10mm (CAPAROL)  
 Pannello OSB di abete 50mm (ABRUZZO LEGNAMI)  
 Rivestimento esterno di intonaco in calce e gesso 10mm (CAPAROL)





- 1. Bar / Zona ristoro
- 2. Info Point
- 3. Zona museale

