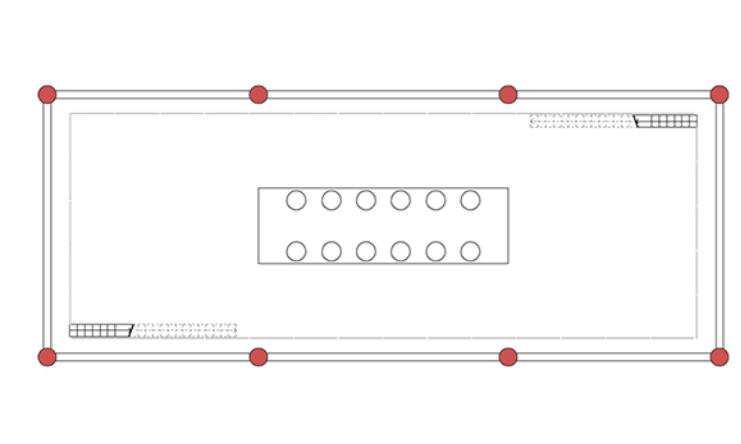
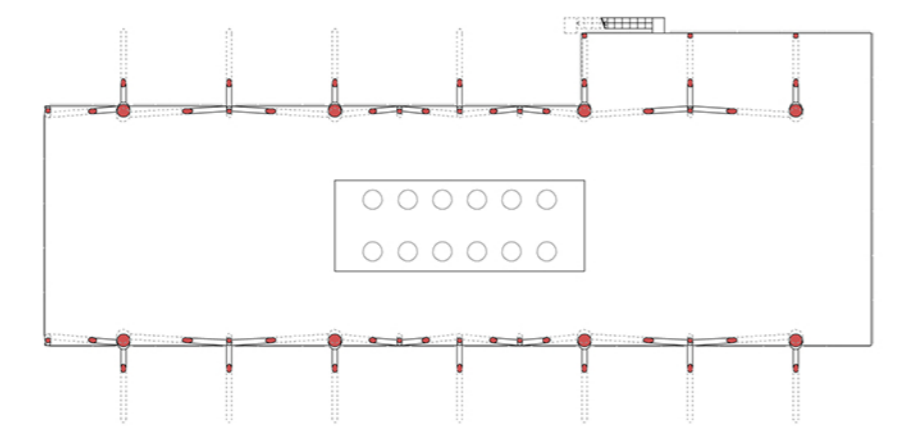


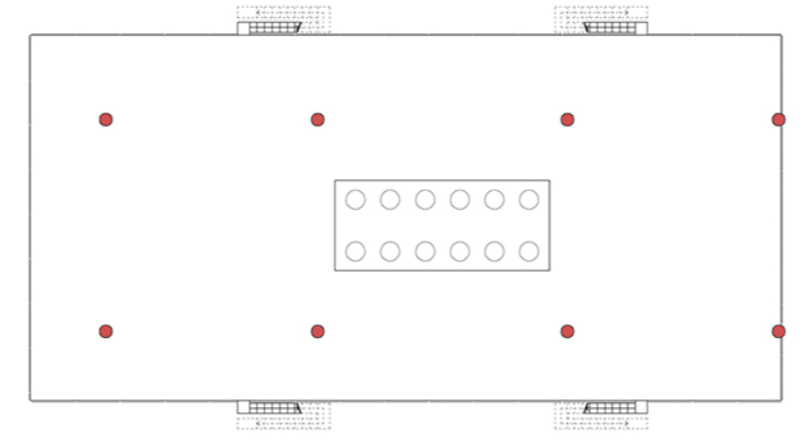
Denominazione	SARAGO MARE A
Anno di costruzione	1981
Tipo	Struttura reticolare a 8 gambe
Minerale	Olio
Operatore	Edison
Collegata alla centrale	Maria a Mare
Capitaneria di porto	San Benedetto del Tronto
Longitudine	13,788738
Lattitudine	43,288851
Distanza dalla costa	3 km
Entro il limite delle 12 miglia dalla linea di costa e dalle aree protette	Si
Altezza s.l.m.	30 m
Profondità fondale	12 m
Dimensioni	44 m x 26 m
Numero di pozzi allacciati	5



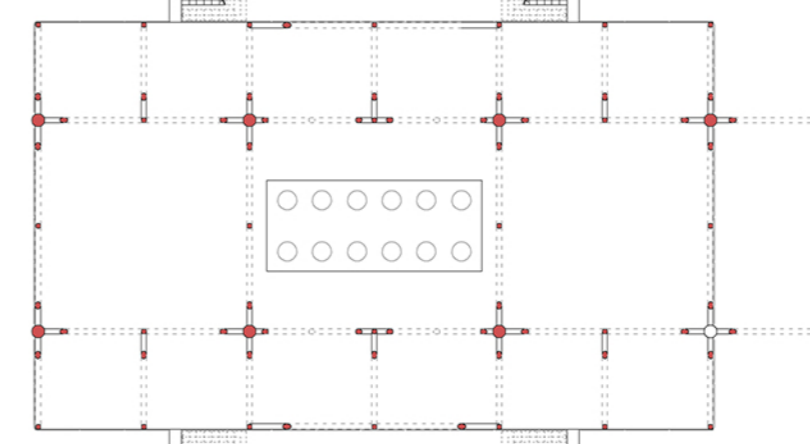
Pianta +3.00 m scala 1:500



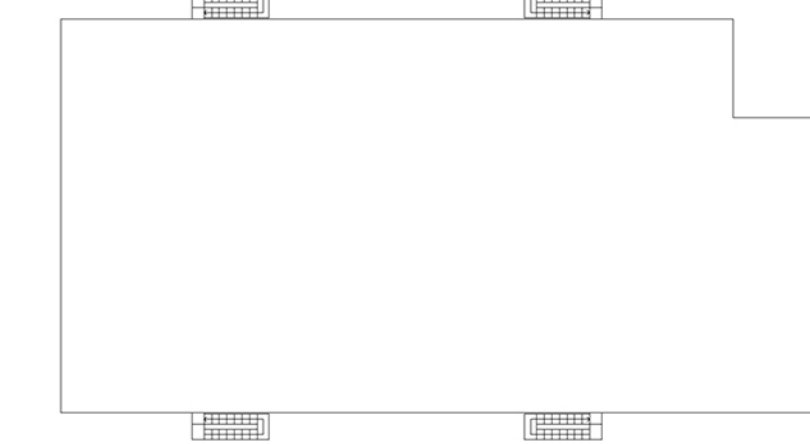
Pianta +12.00 m scala 1:500



Pianta +16.40 m scala 1:500

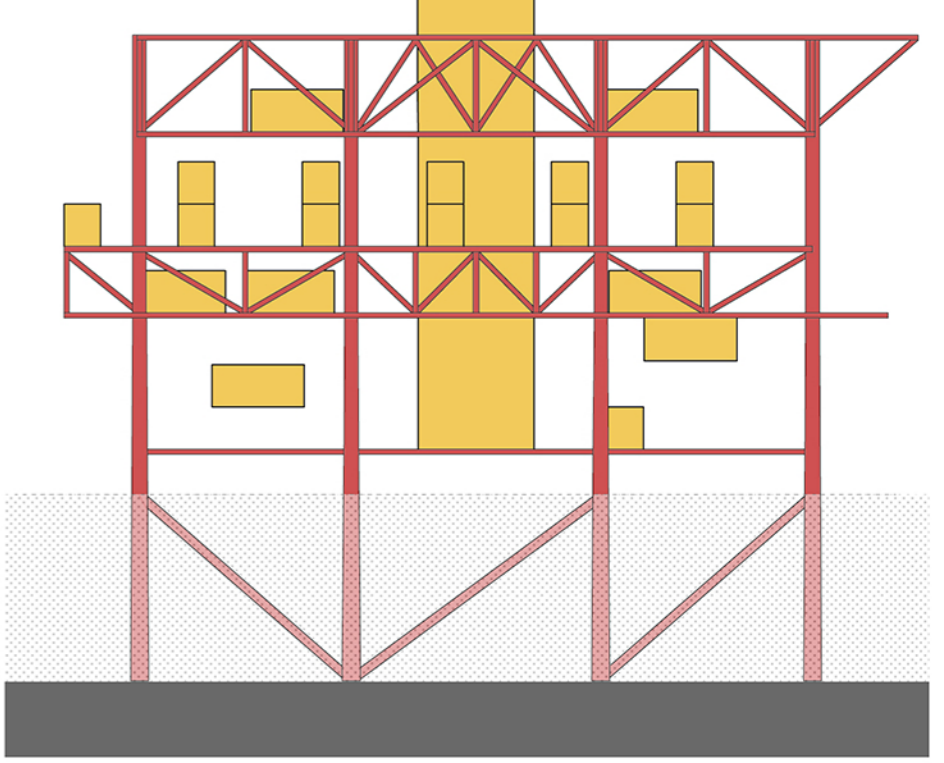
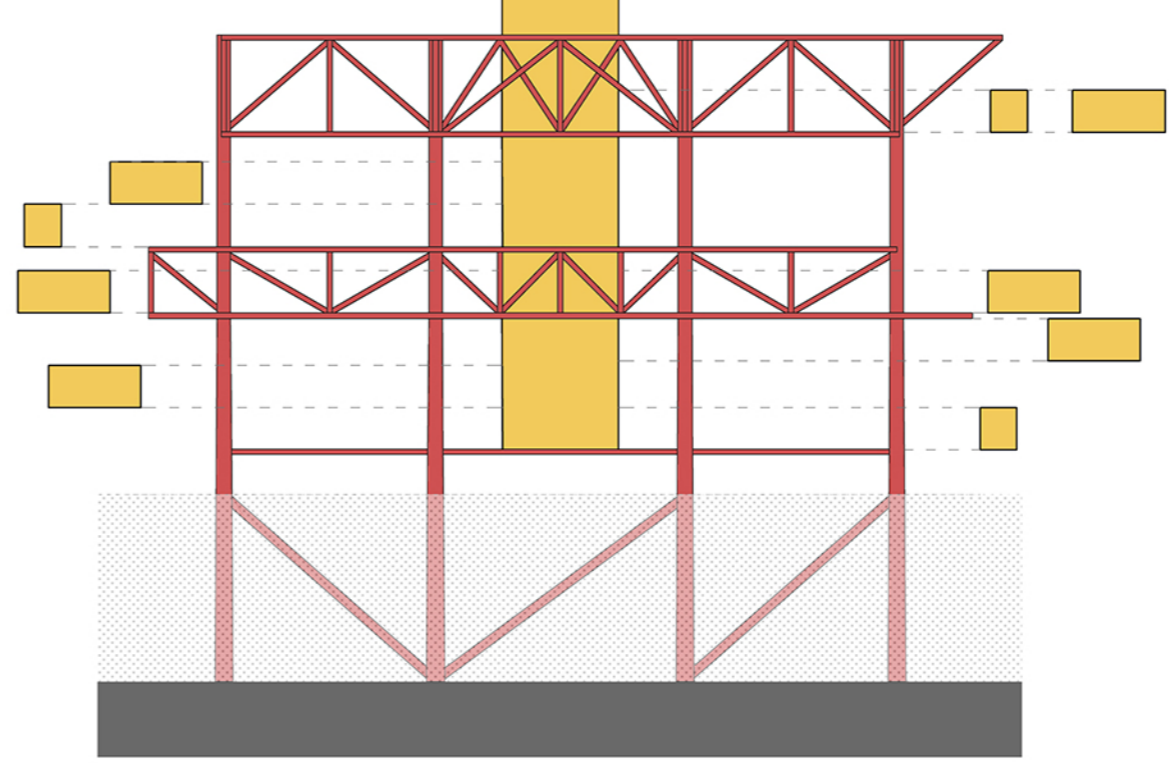
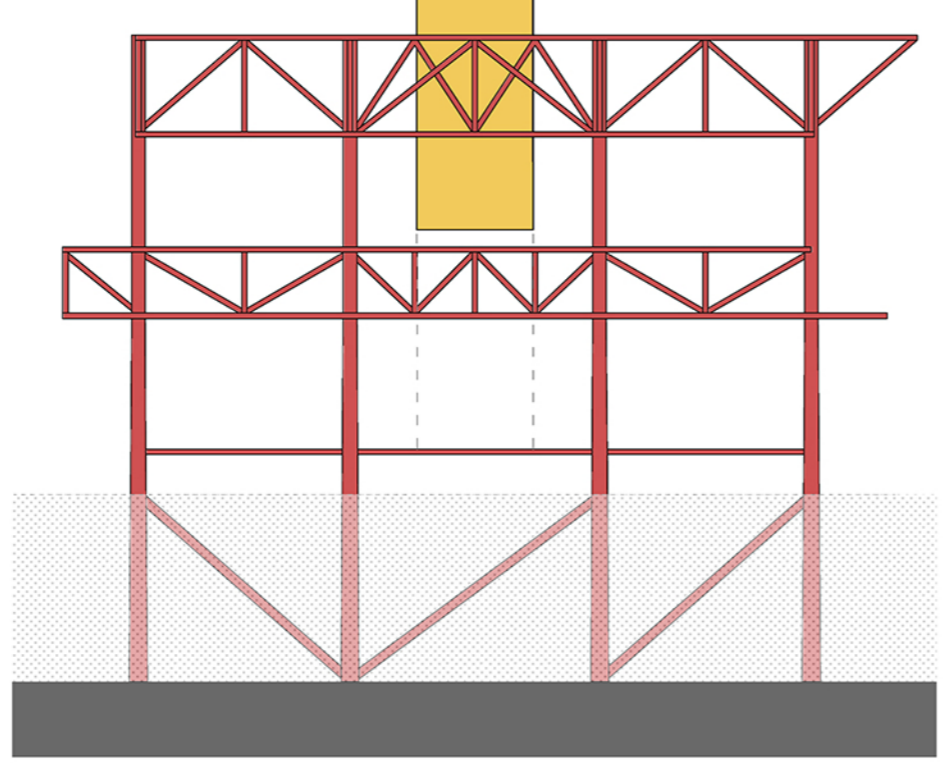
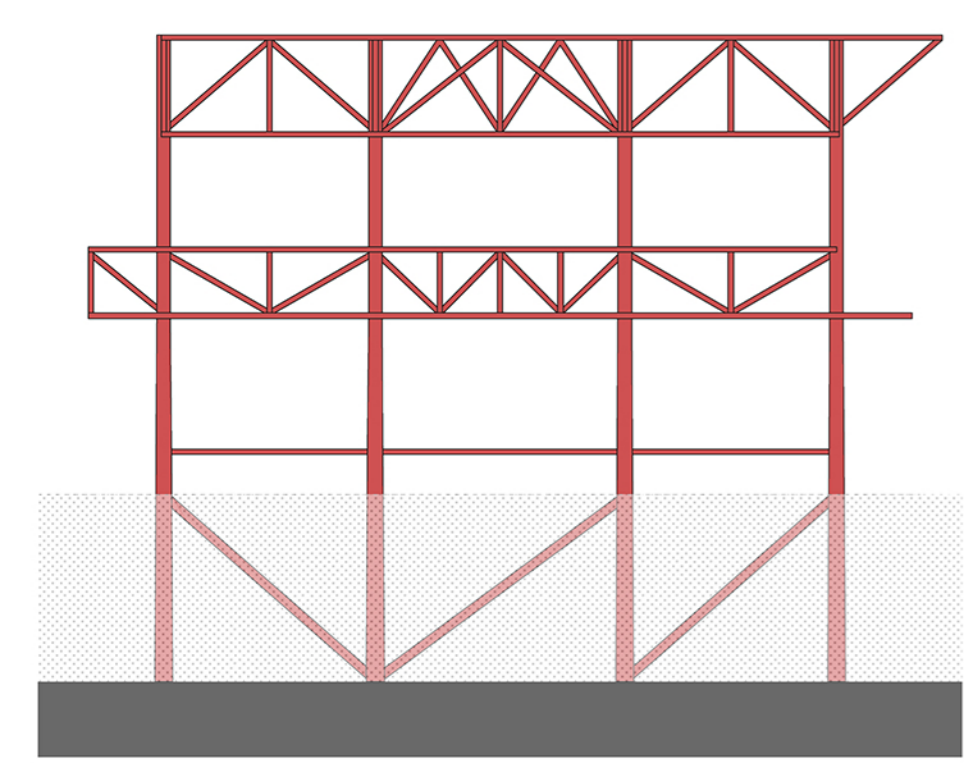


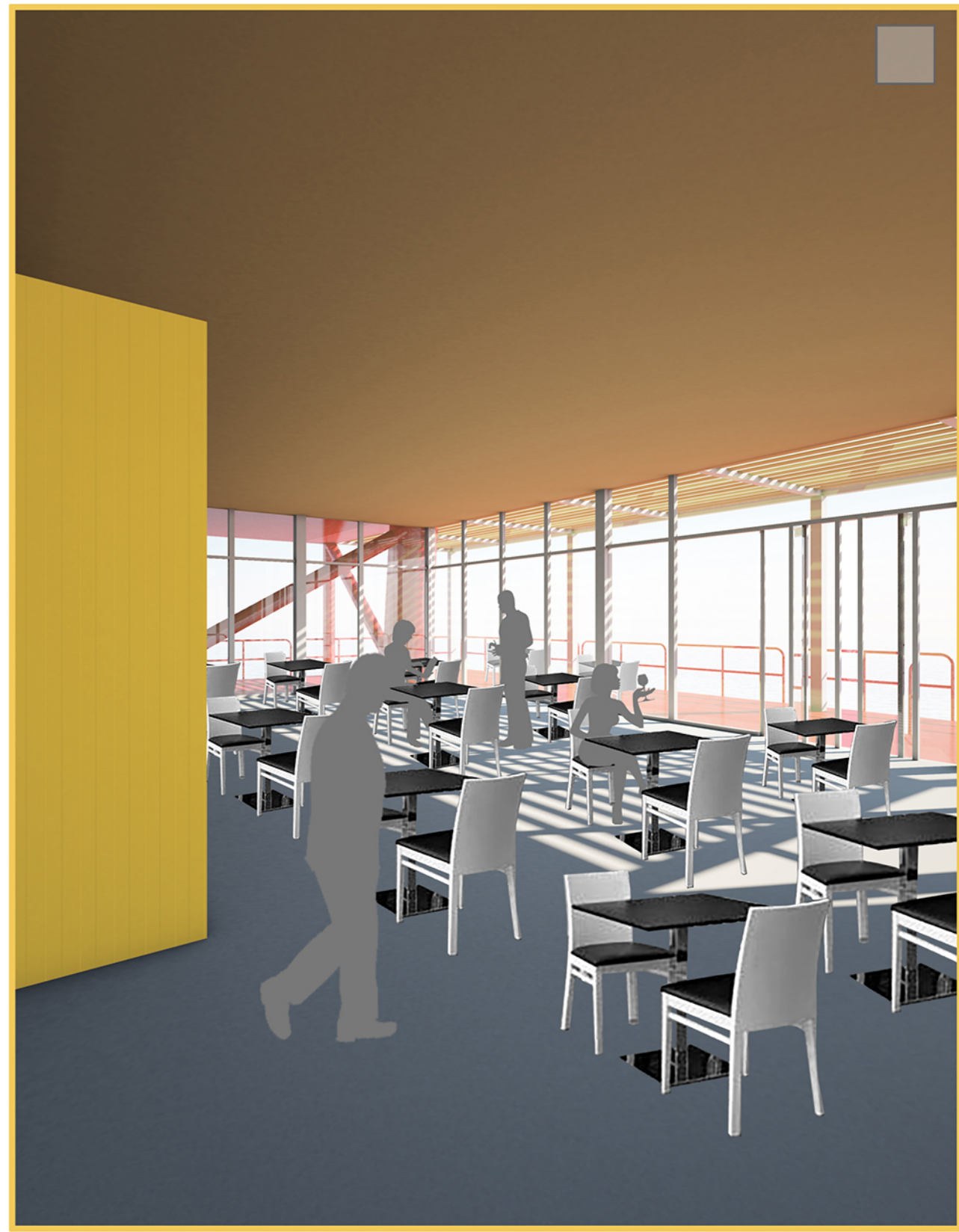
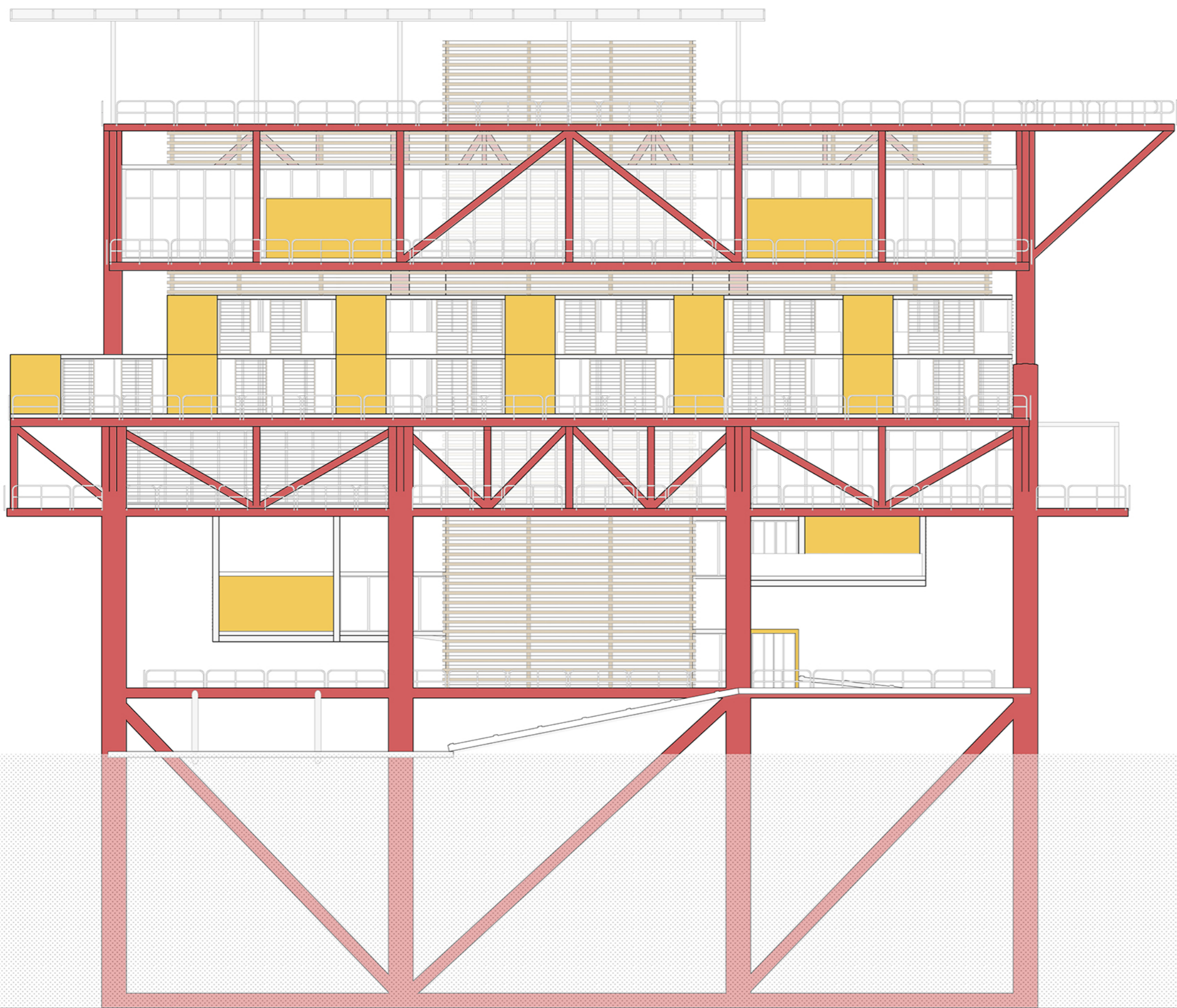
Pianta +24.00 m scala 1:500



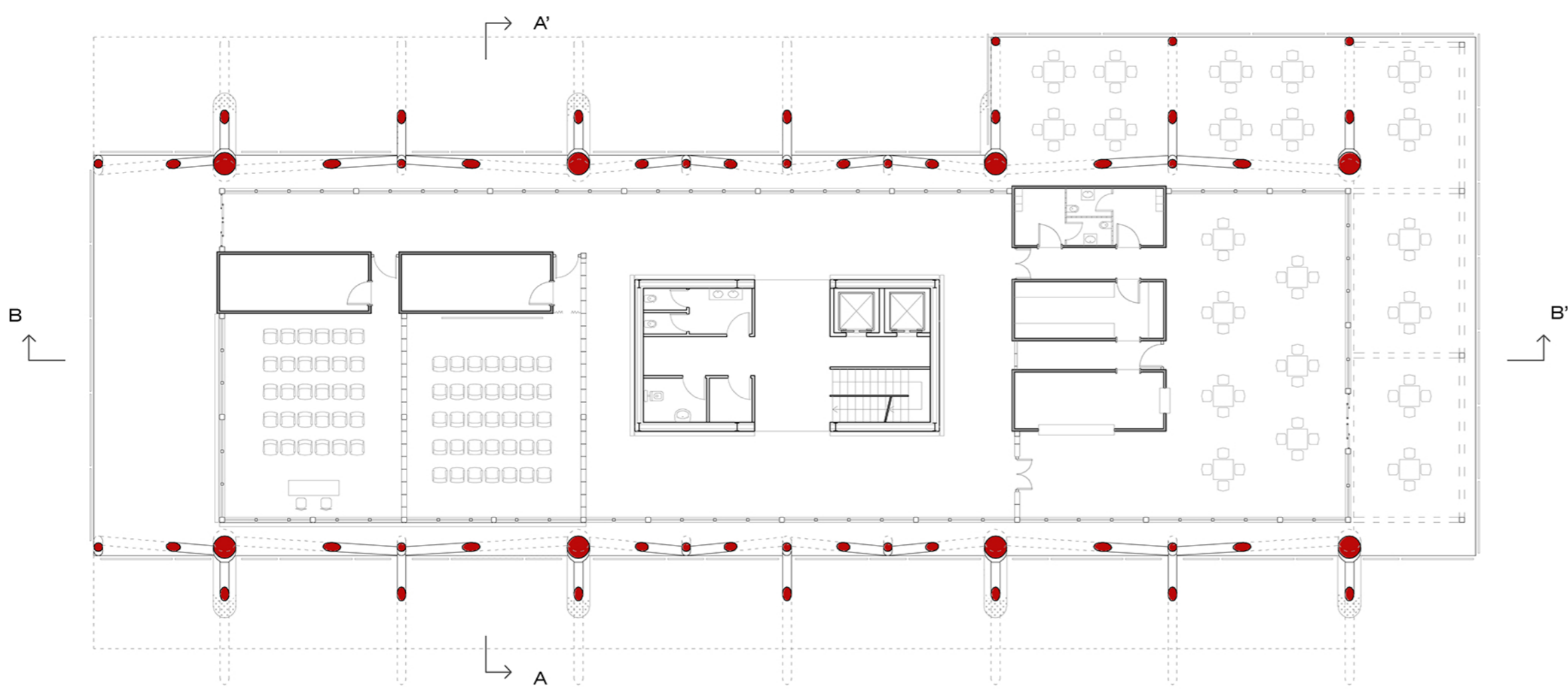
Pianta +30.40 m scala 1:500

## CONCEPT

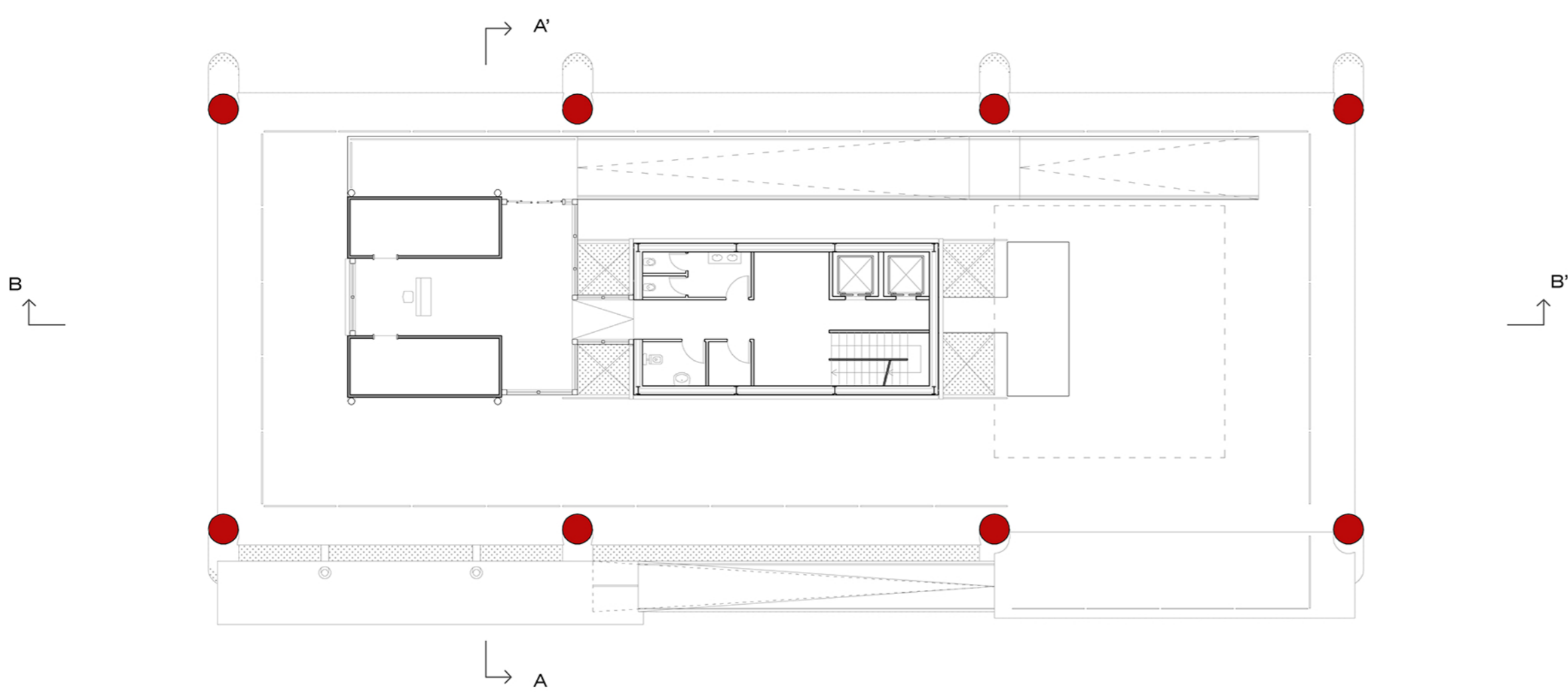
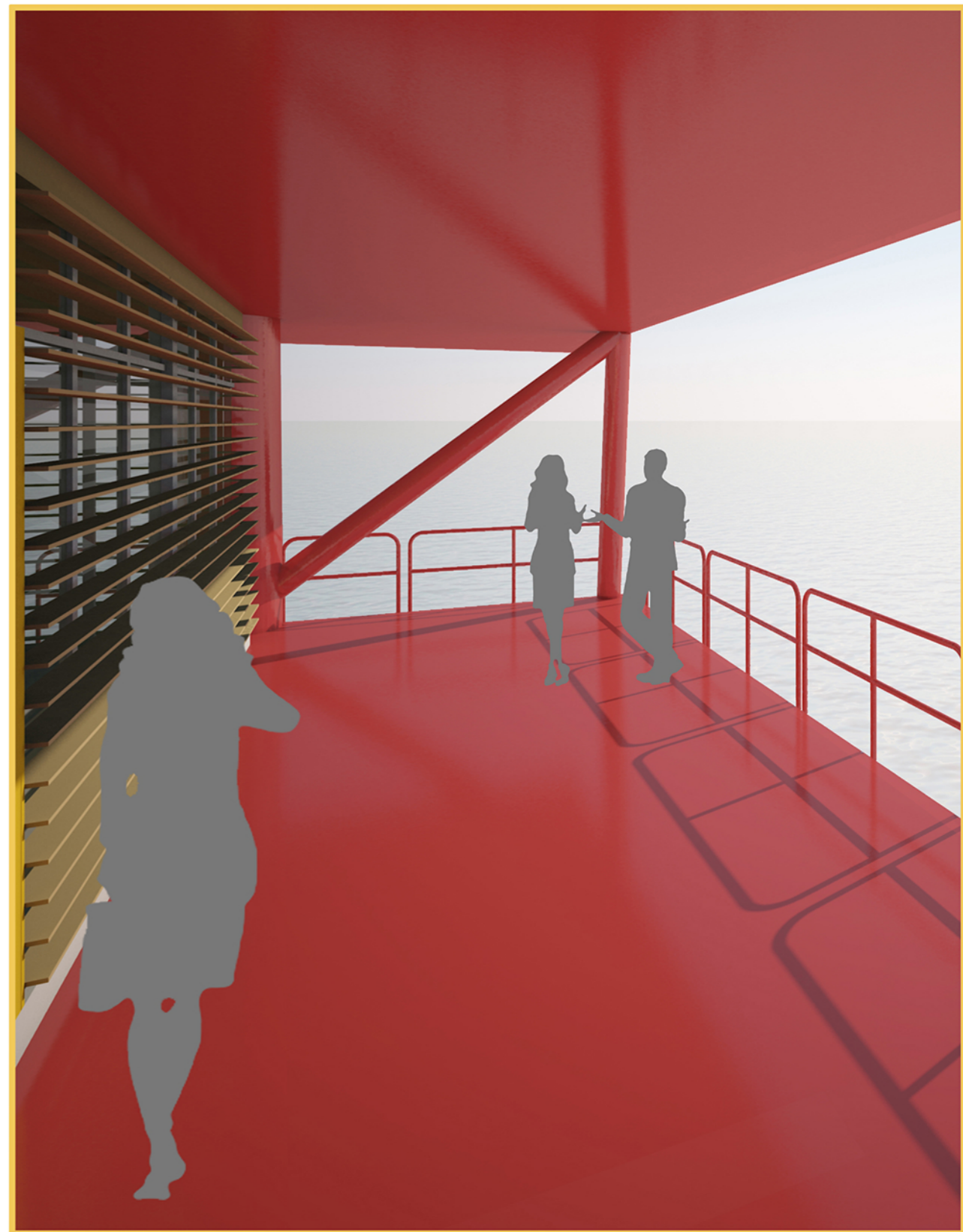




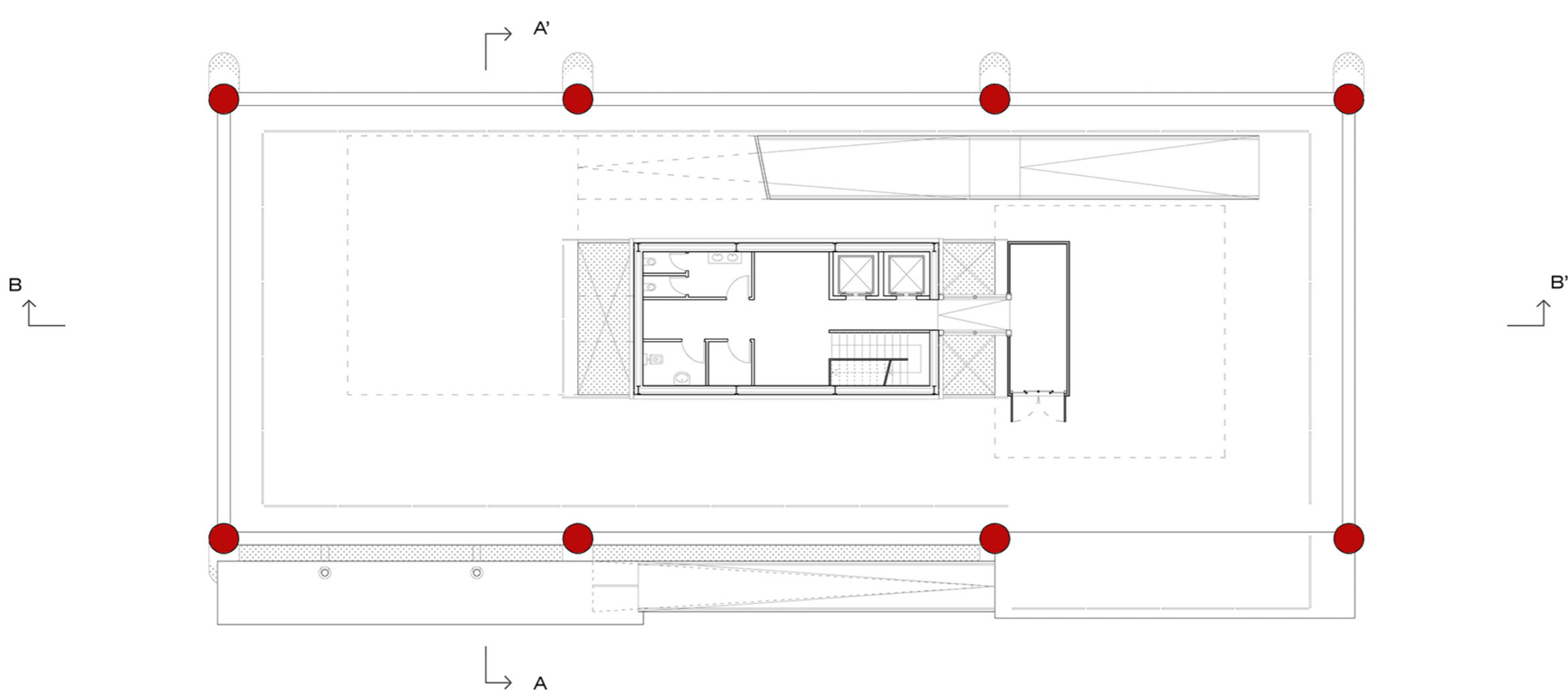
Prospetto sud\_scala 1:200



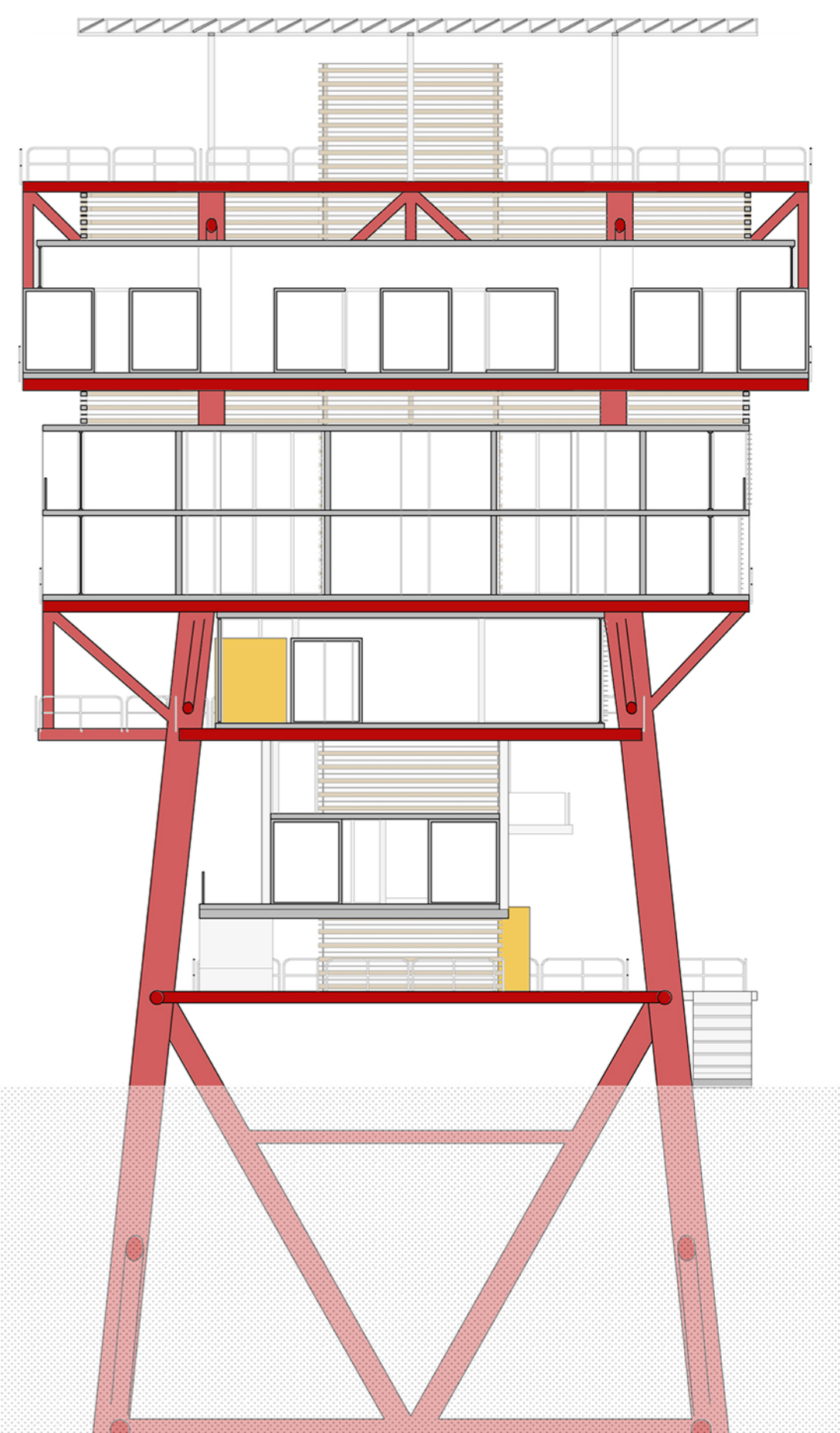
Pianta +12.00 m\_scala 1:200



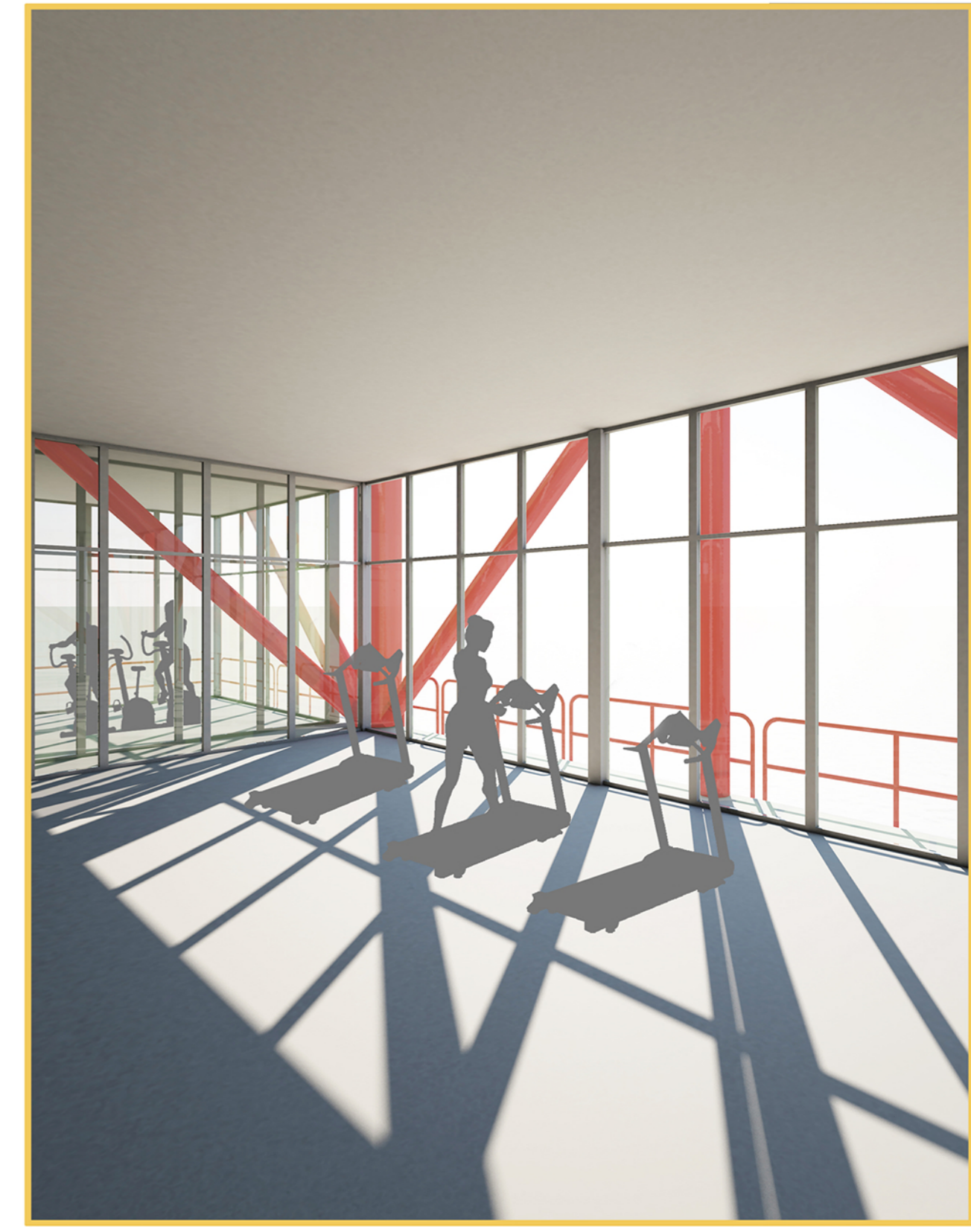
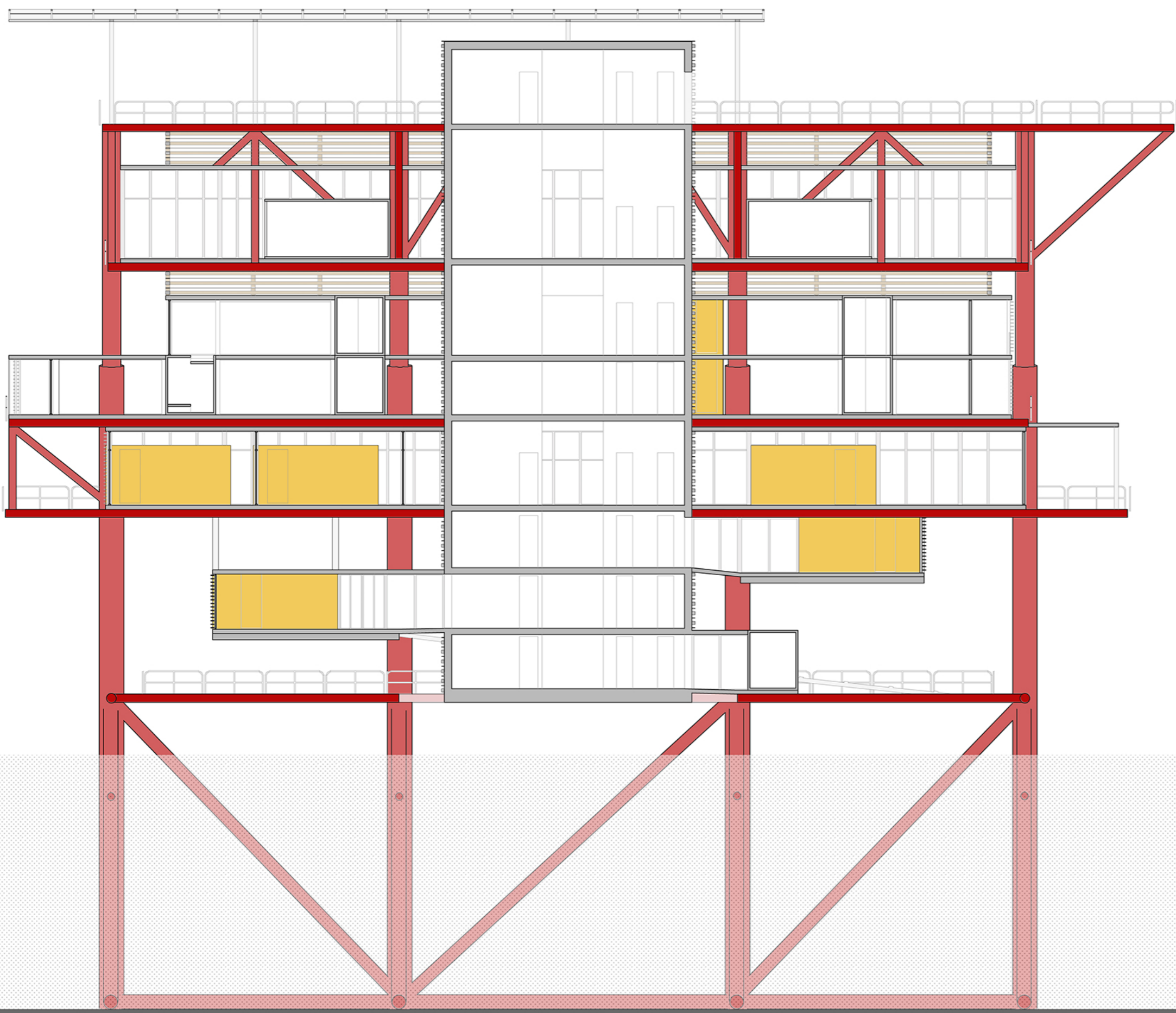
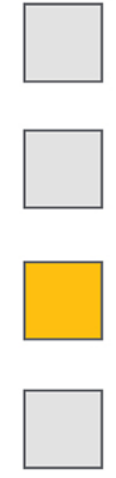
Pianta +6.00 m\_scala 1:200



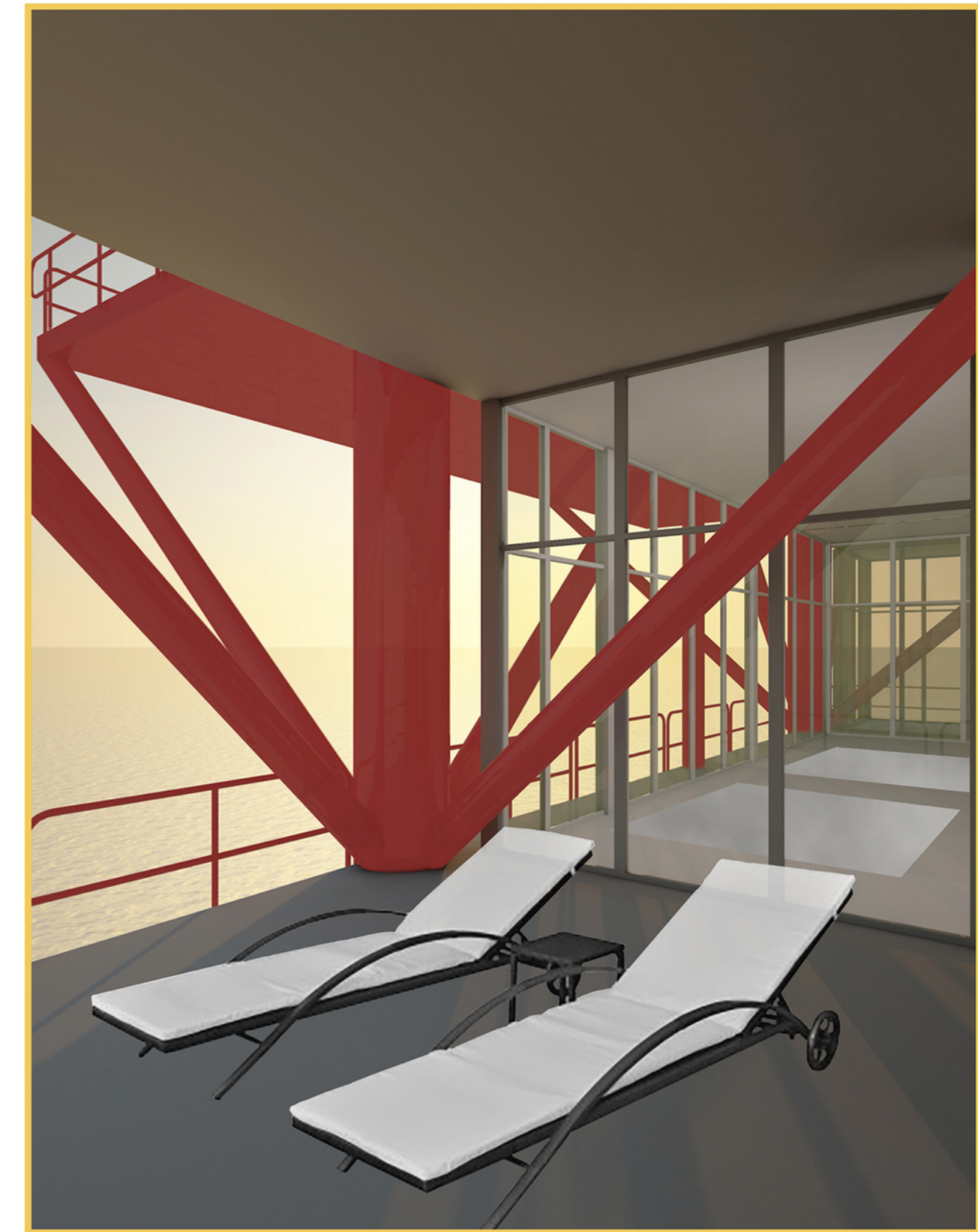
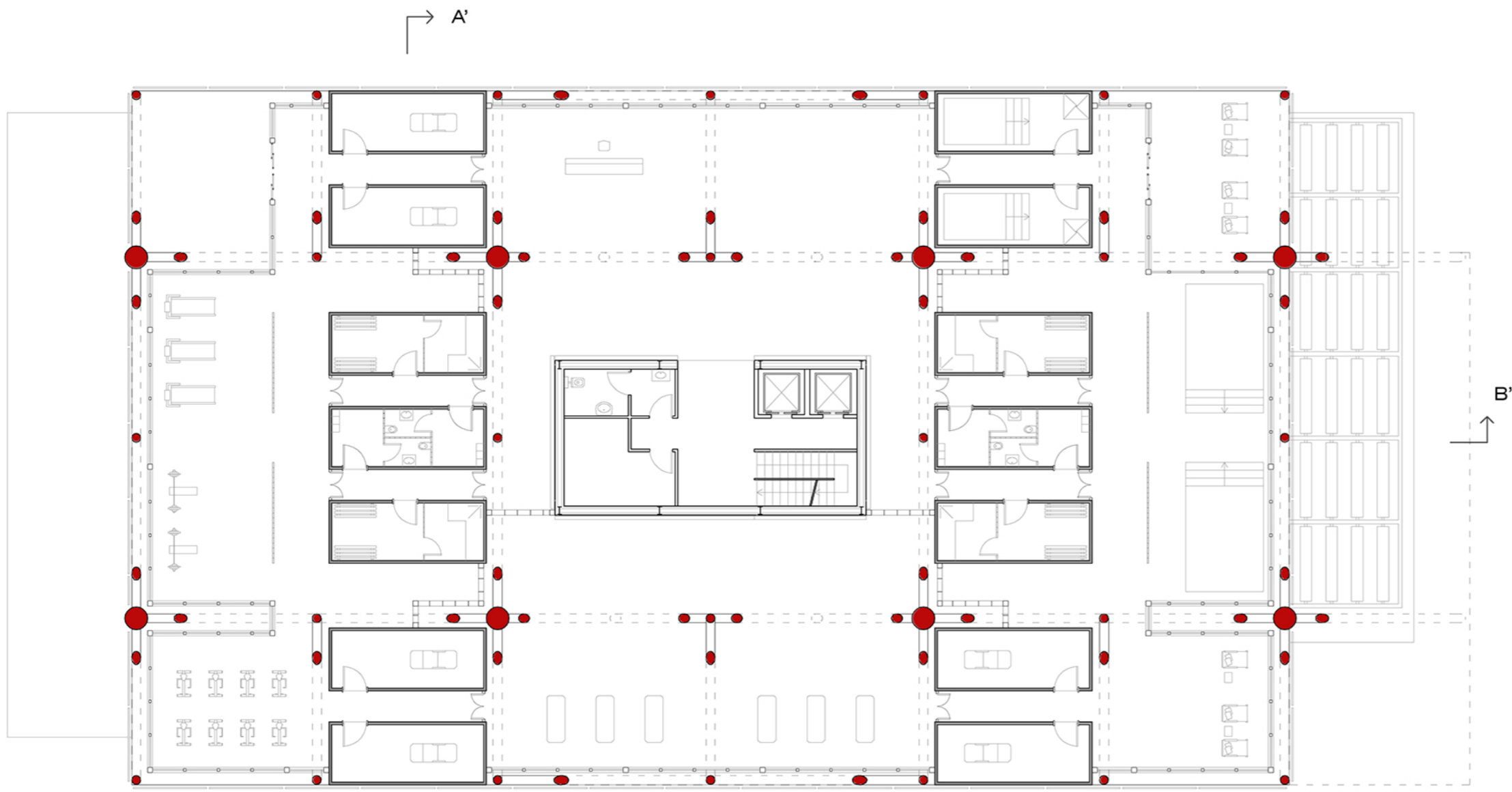
Pianta +3.00 m\_scala 1:200



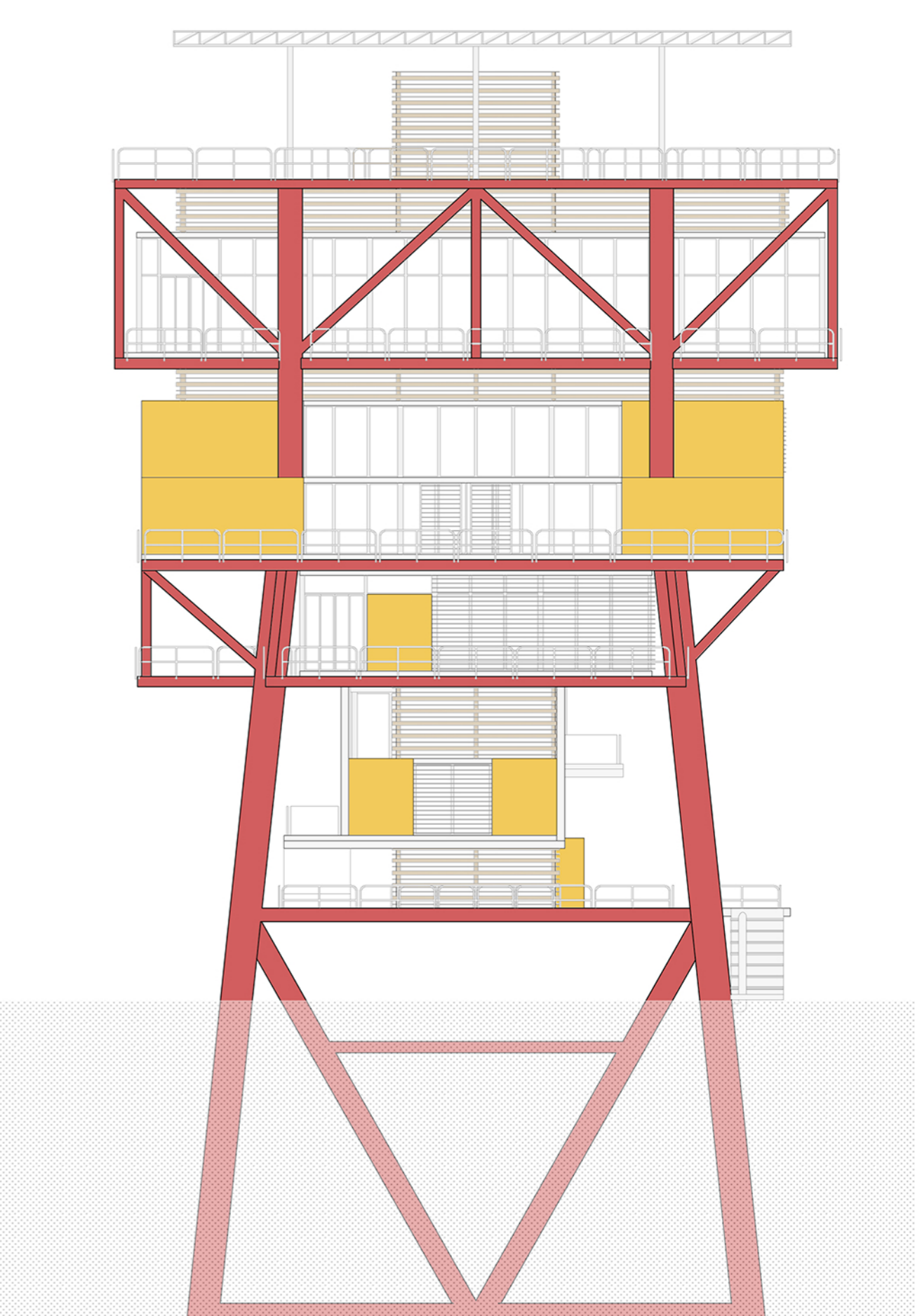
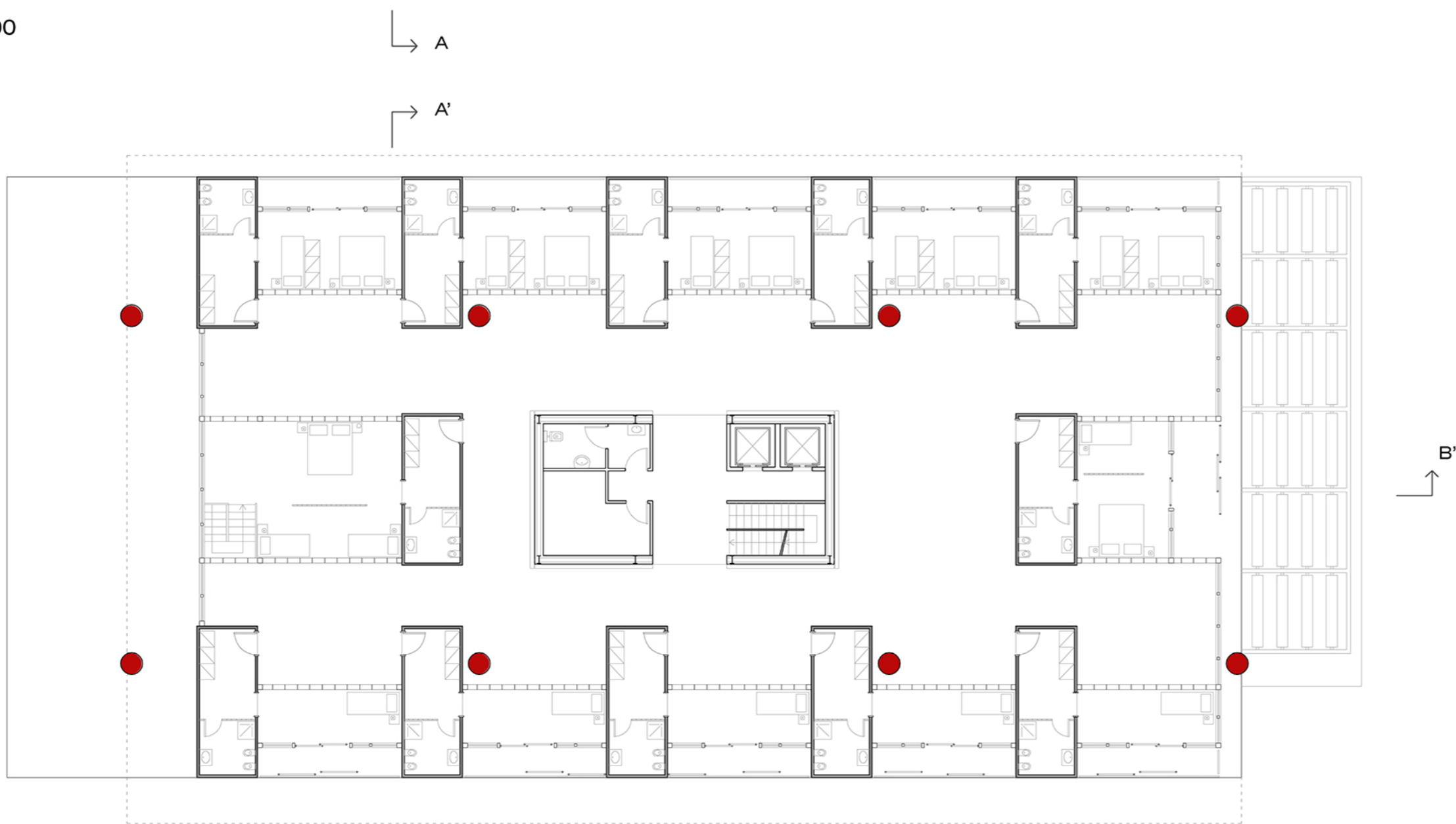
Sezione A-A'\_scala 1:200



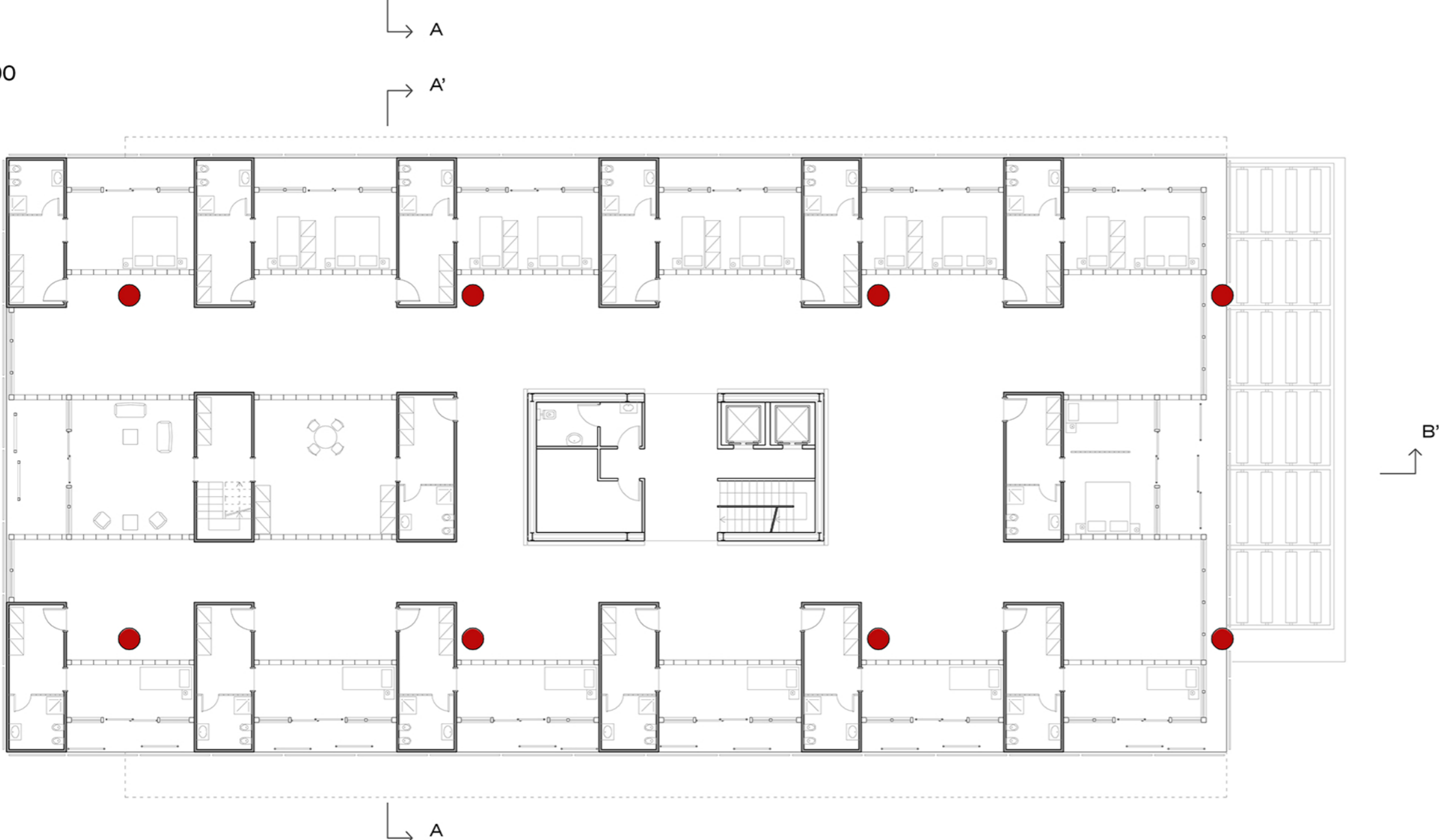
Sezione B-B' scala 1:200



Pianta +24.00 m scala 1:200

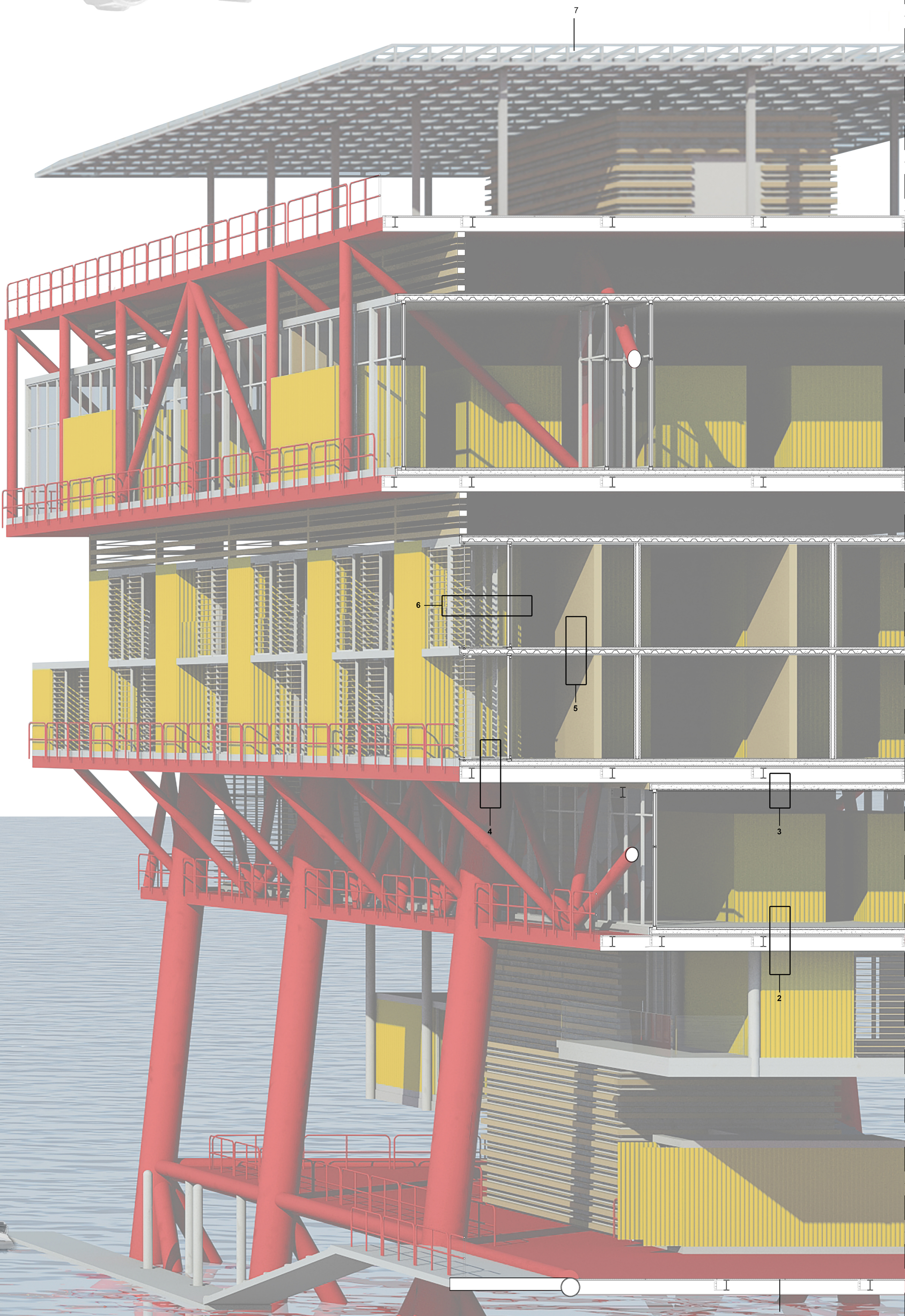
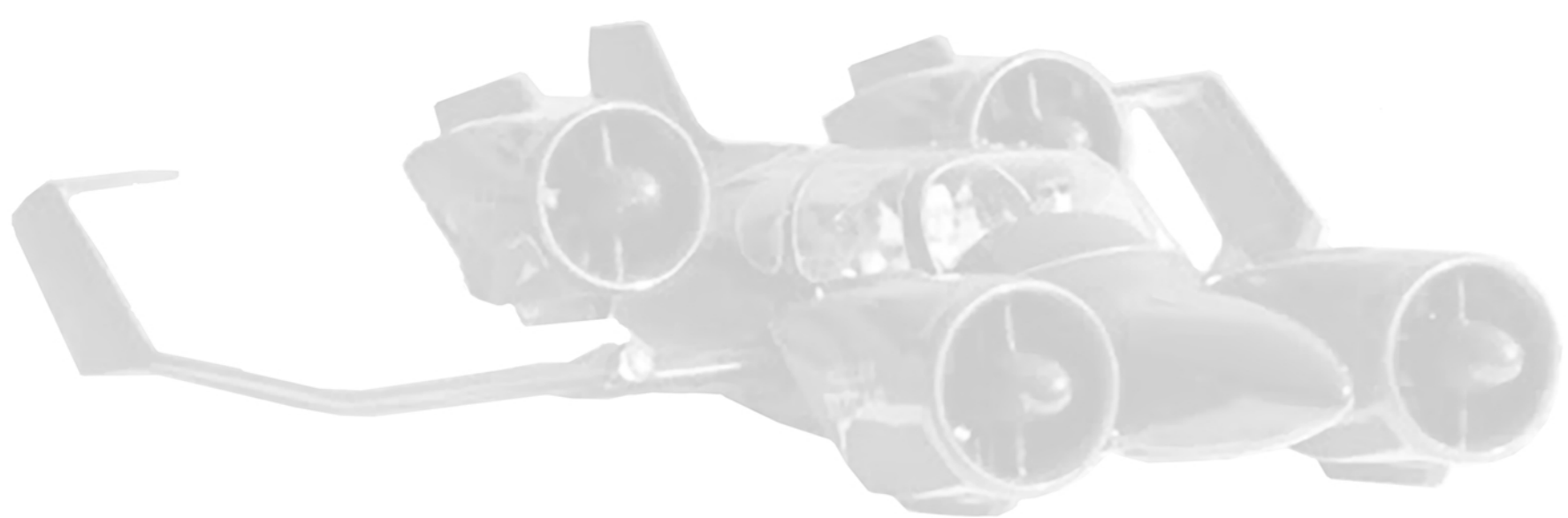


Pianta +19.40 m scala 1:200



Prospetto ovest scala 1:200

Pianta +16.40 m scala 1:200



**1. Struttura preesistente**

- HEA 400 \_ 390 mm
- IPE 270 \_ 270 mm
- Pavimentazione in grigliato metallico 30 mm

**2. Chiusura orizzontale inferiore 211 mm**

- pannello di chiusura in alluminio 2 mm
- isolamento termico 30 mm
- lamiera grecata con soletta collaborante 110 mm
- guaina acustica 9 mm
- massetto in calcestruzzo 50 mm
- pavimentazione 10 mm

**3. Chiusura orizzontale superiore 189,5 mm**

- pannello di chiusura in alluminio 2 mm
- guaina impermeabilizzante 5 mm
- isolamento termico 30 mm
- lamiera grecata con soletta collaborante 110 mm
- isolamento acustico 30 mm
- pannello in cartongesso 12,5 mm

**4. Chiusura orizzontale inferiore 200 mm**

- pannello di chiusura in alluminio 2 mm
- isolamento termico 30 mm
- lamiera grecata con soletta collaborante 110 mm
- isolamento termico 30 mm
- guaina impermeabilizzante 3 mm
- pavimentazione flottante 10 + 15 mm

**5. Solaio interpiano 221,5 mm**

- pavimentazione 10 mm
- massetto in calcestruzzo 50 mm
- guaina acustica 9 mm
- lamiera grecata con soletta collaborante 110 mm
- isolamento termico 30 mm
- pannello in cartongesso 12,5 mm

**6. Chiusura verticale trasparente**

- Infisso scorrevole in alluminio a taglio termico con vetrocamera stratificato (3+3)/15/(3+3)
- Frangisole scorrevole in alluminio, a pale orizzontali

**7. Sistema di ombreggiamento composto da frangisole orizzontale con pannello fotovoltaico**

