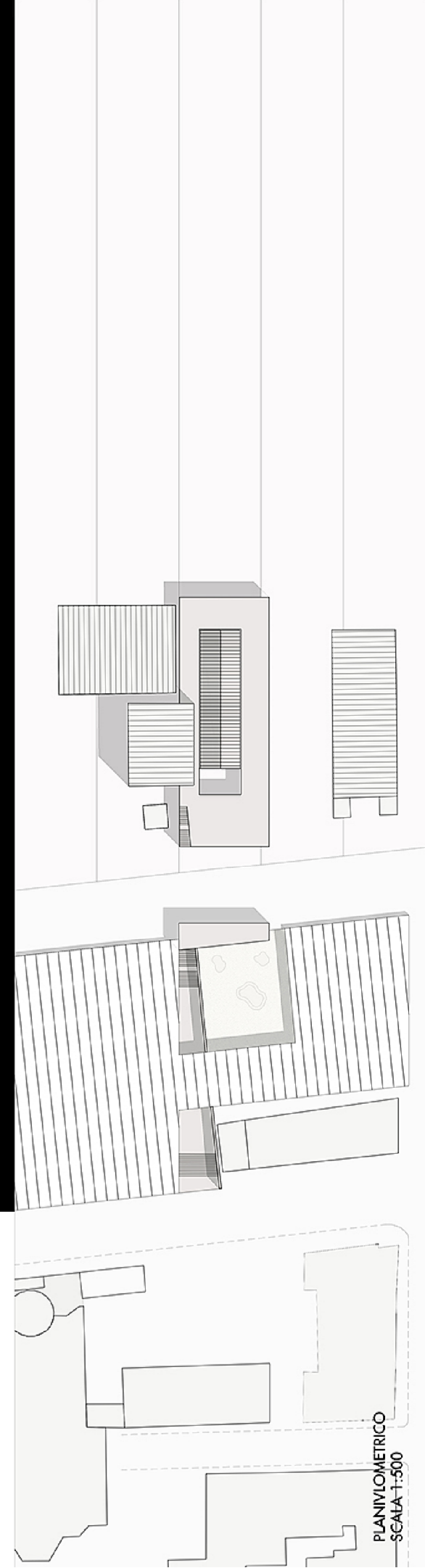
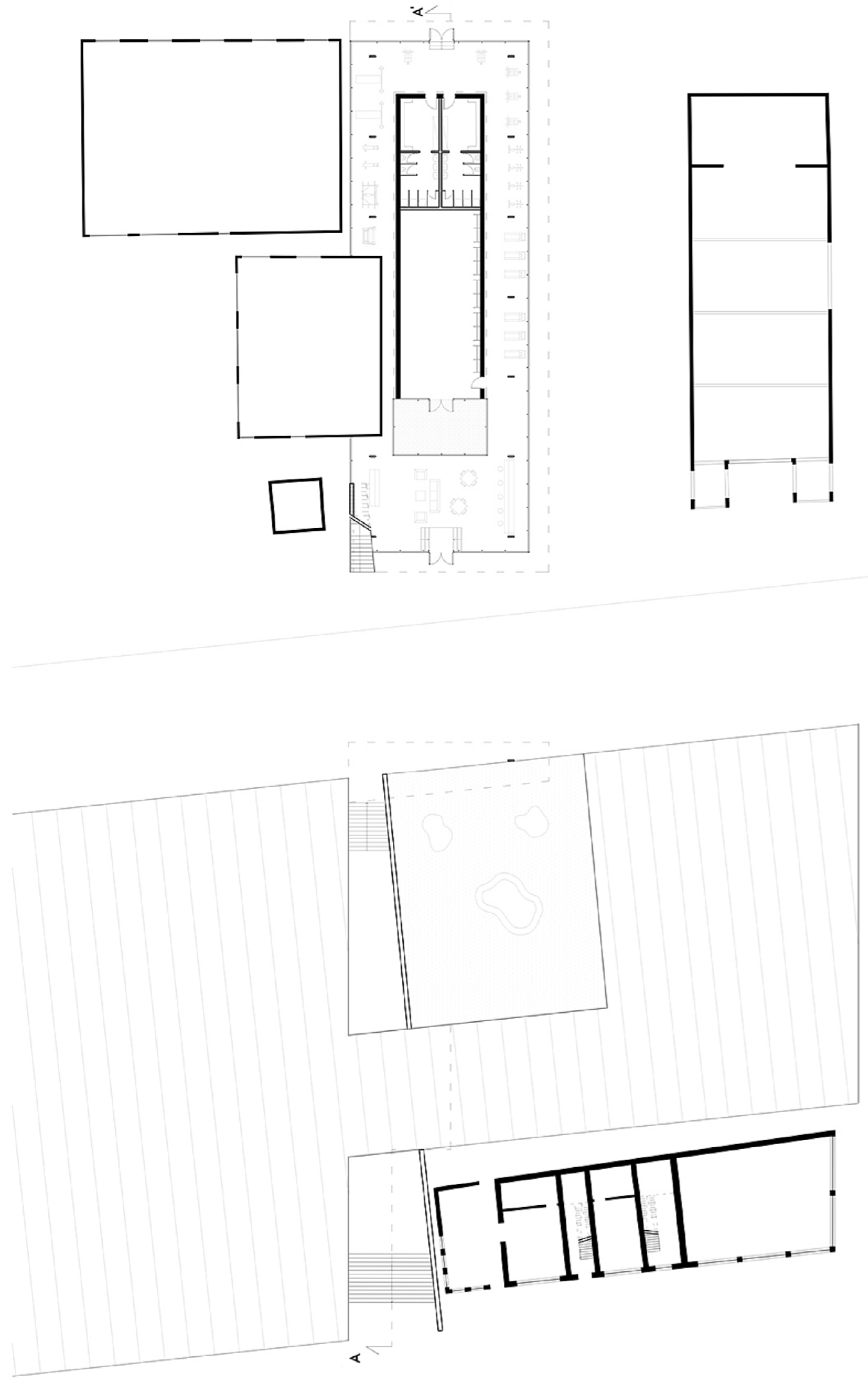




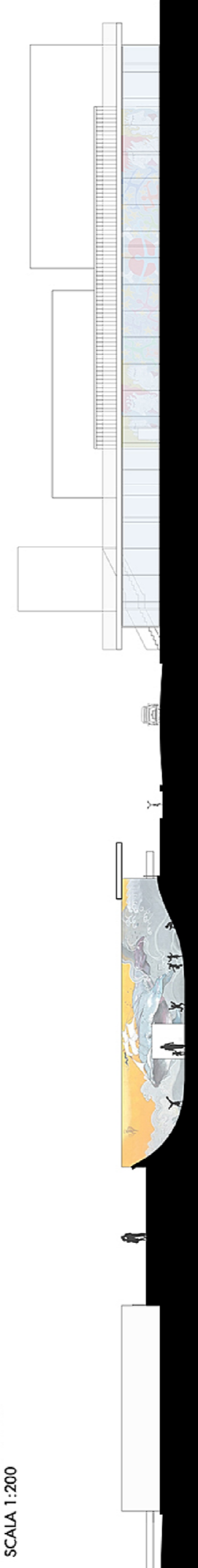
PROFILO  
SCALA 1:500



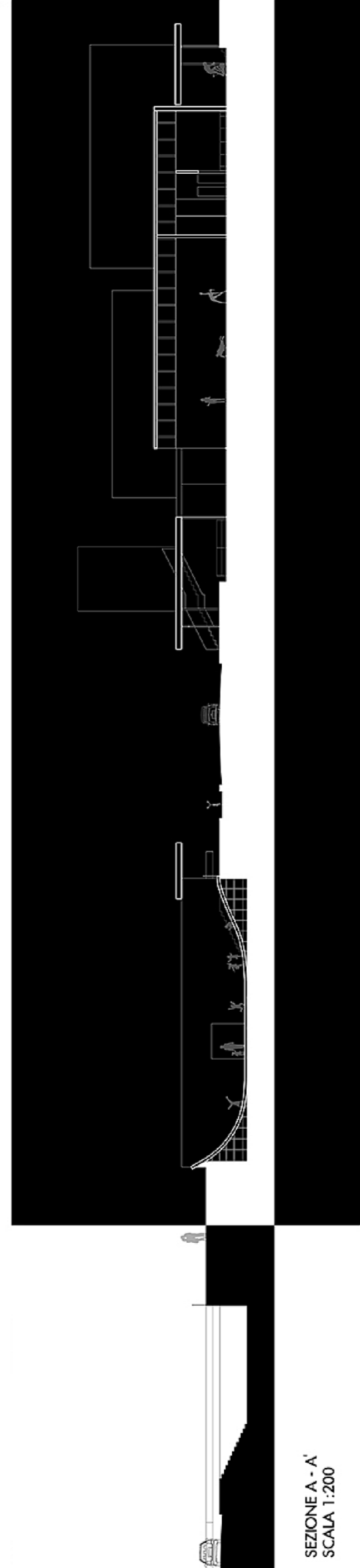




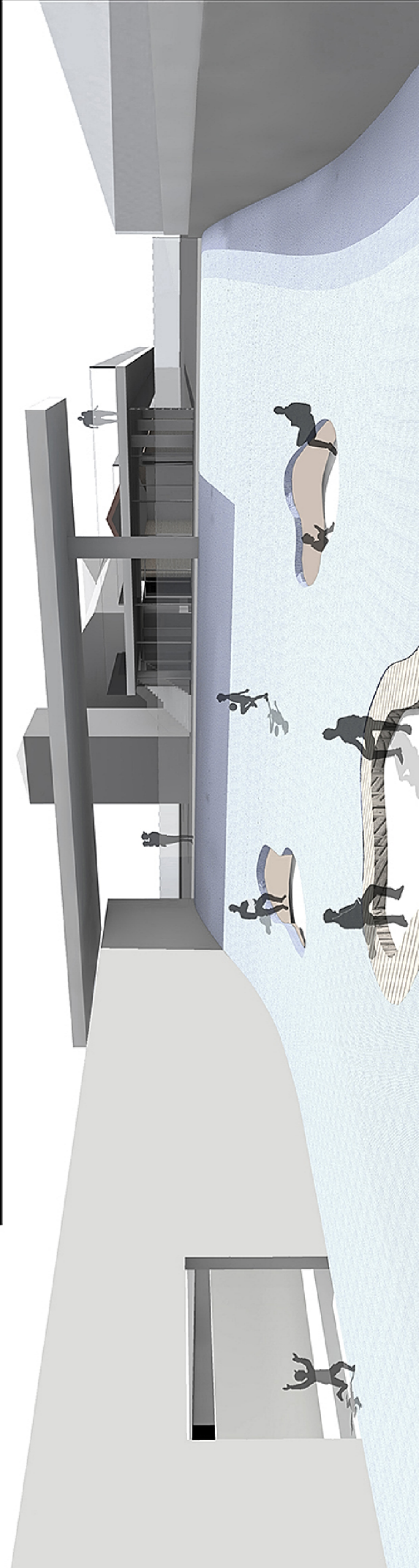
PIANTA PIANO TERRA  
SCALA 1:200



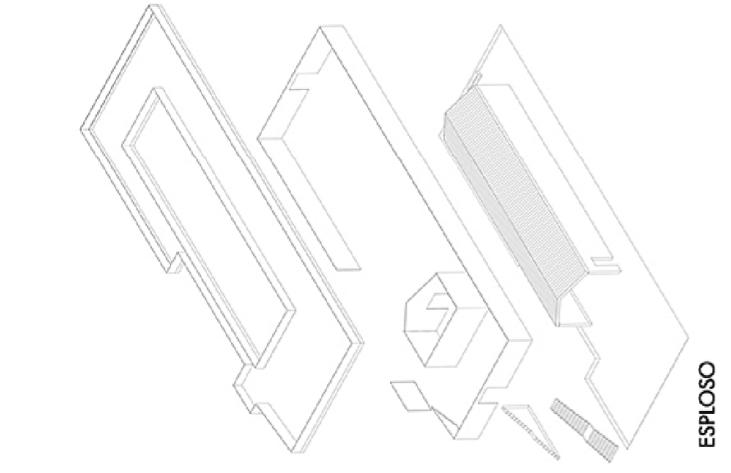
PROSPETTO  
SCALA 1:200



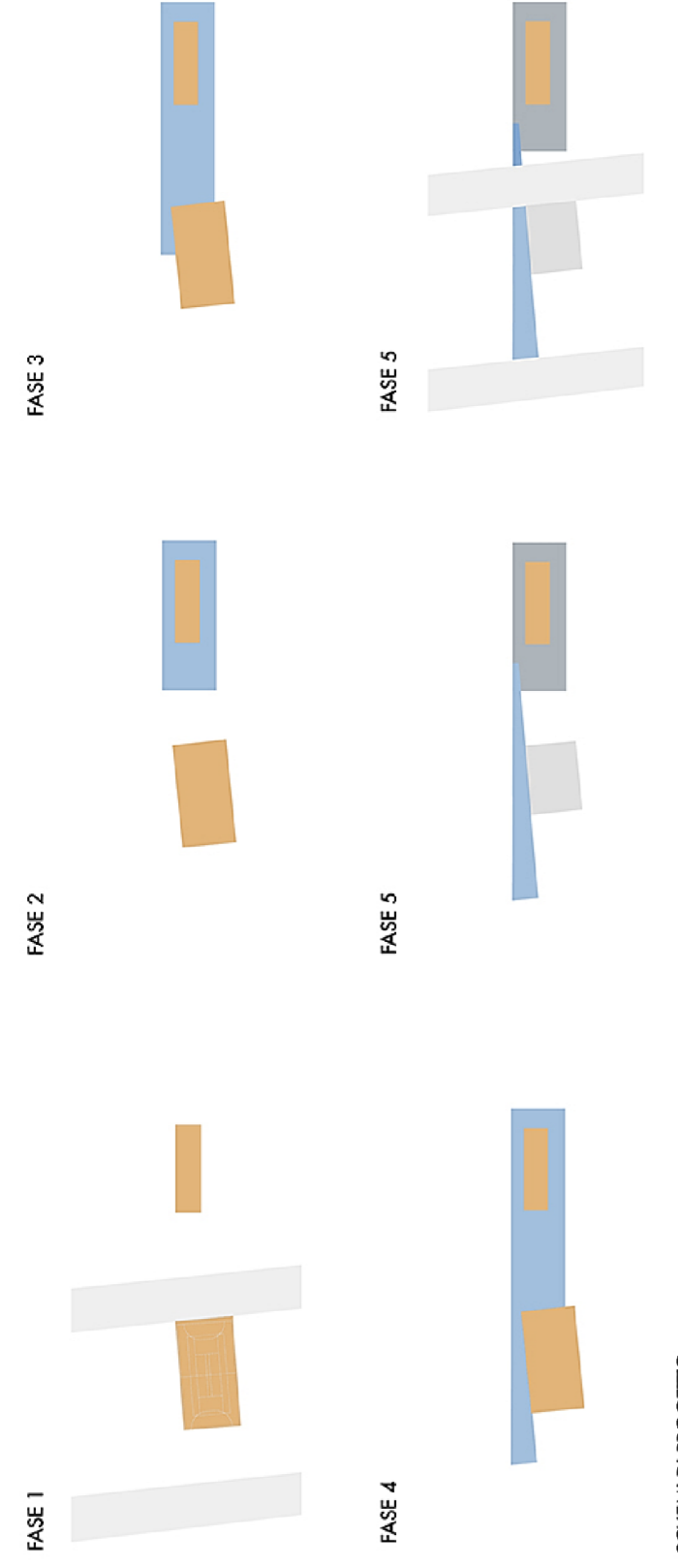
SEZIONE A - A'  
SCALA 1:200



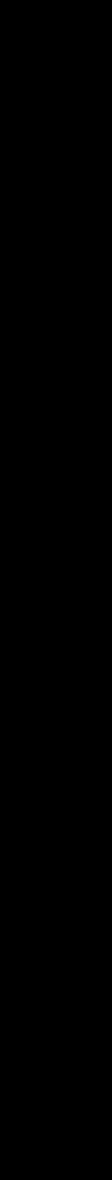
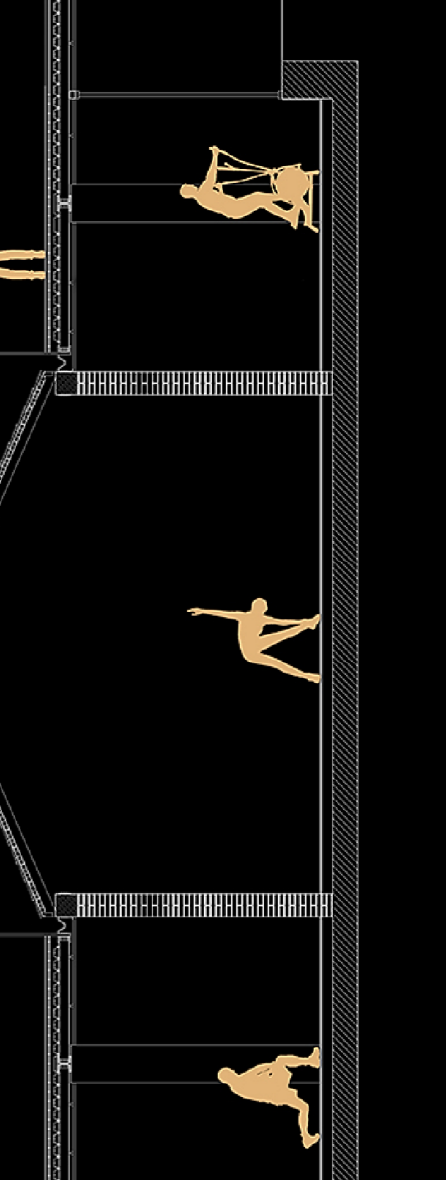
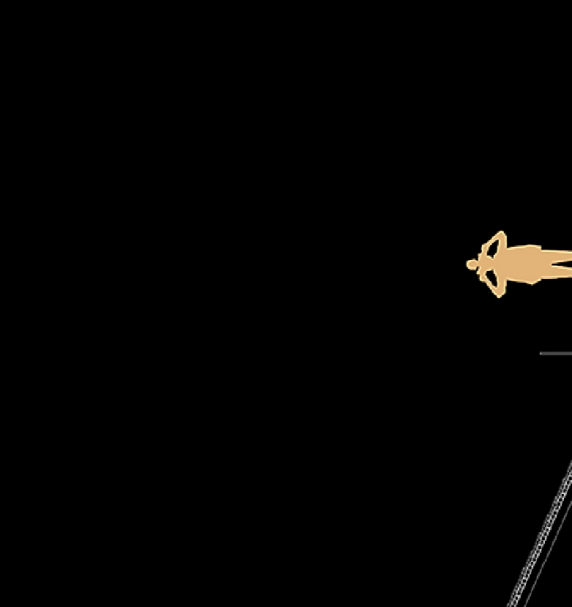
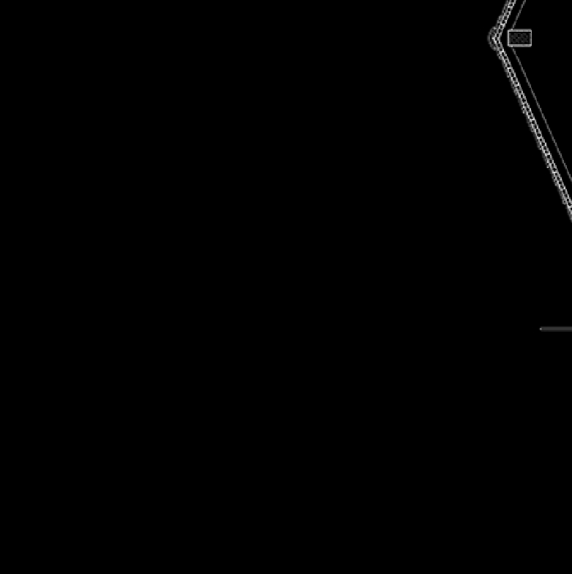
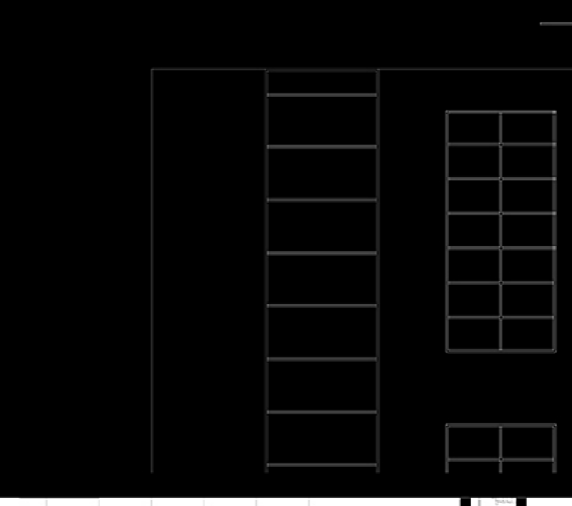
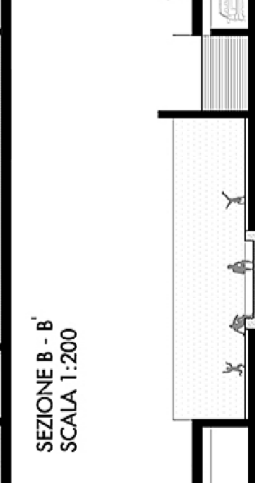
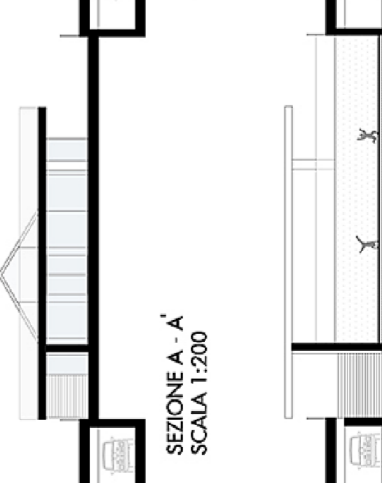
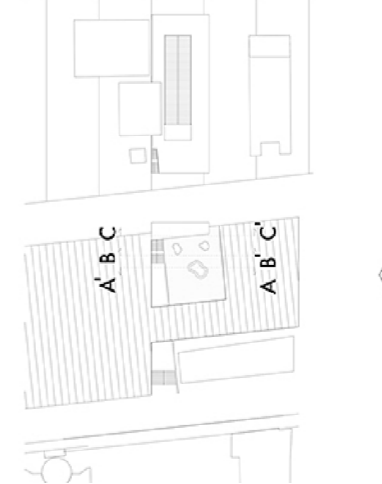
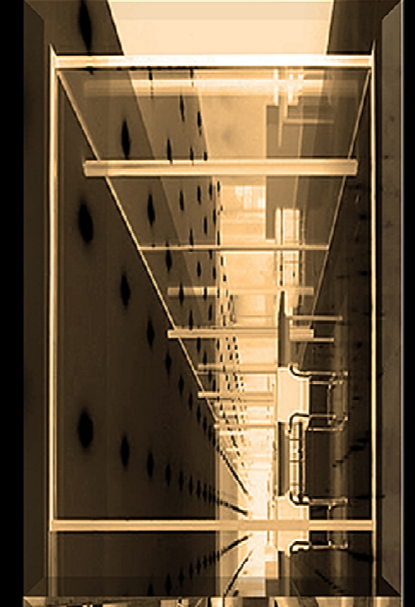
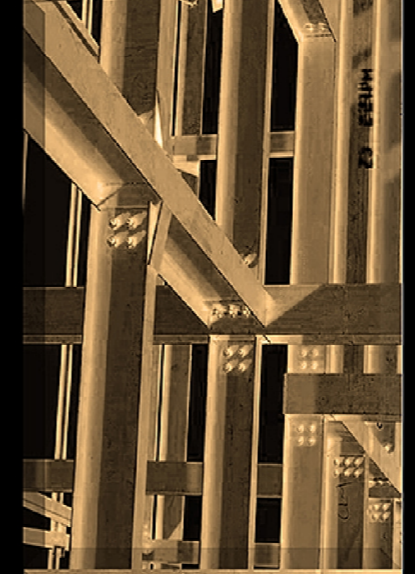
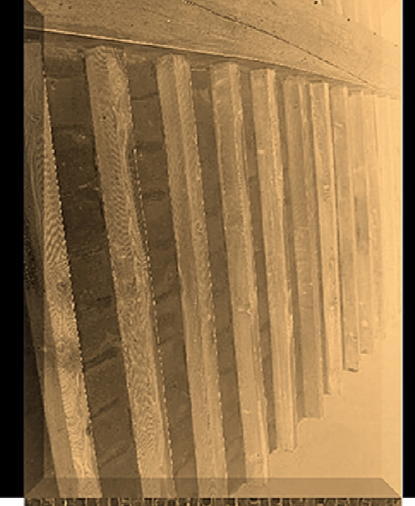




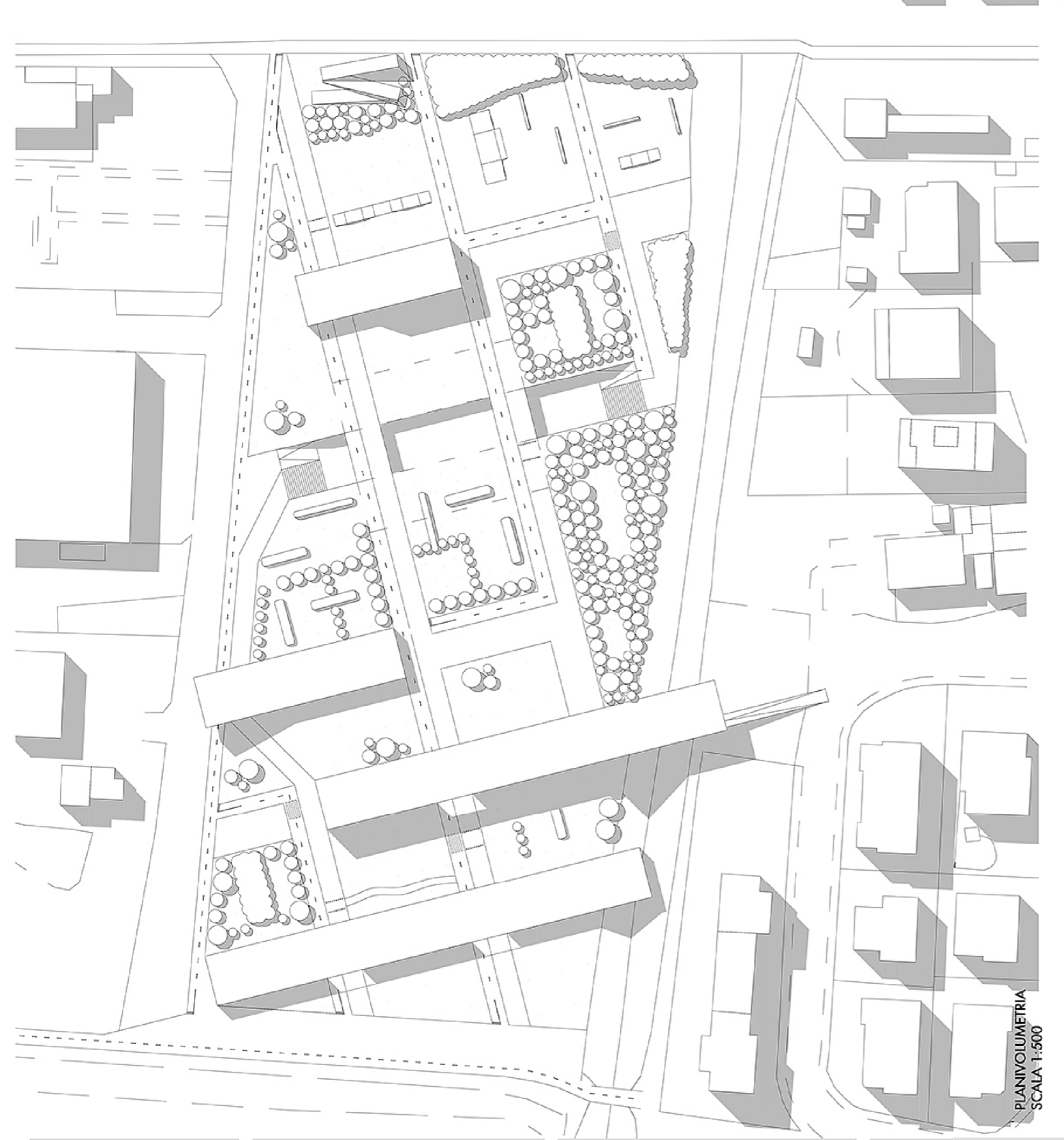
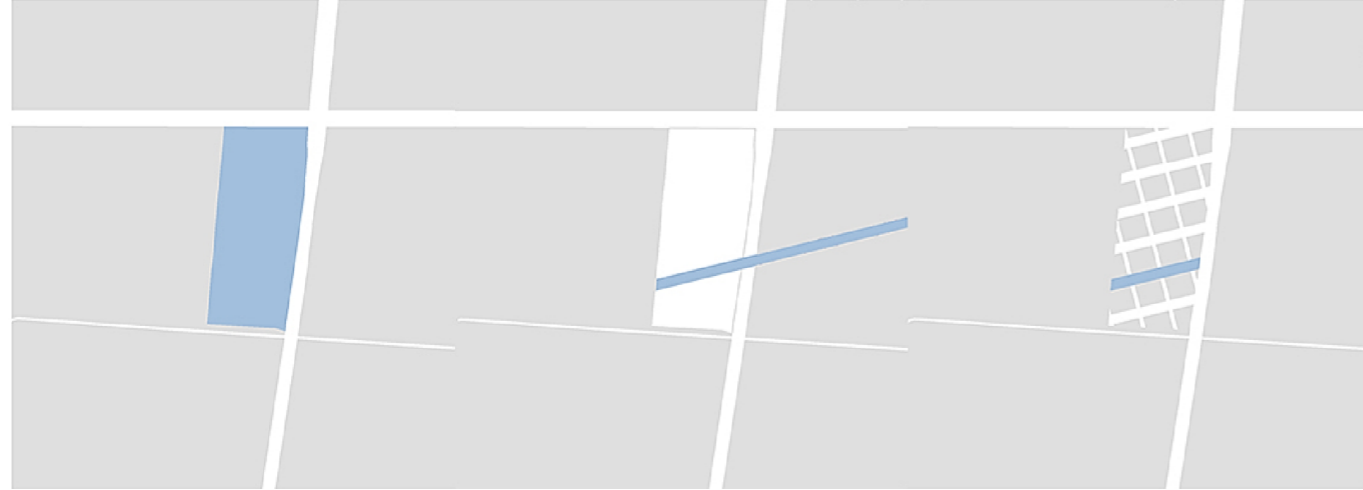
ESPLOSO



SCHEMI DI PROGETTO



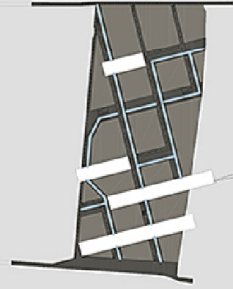




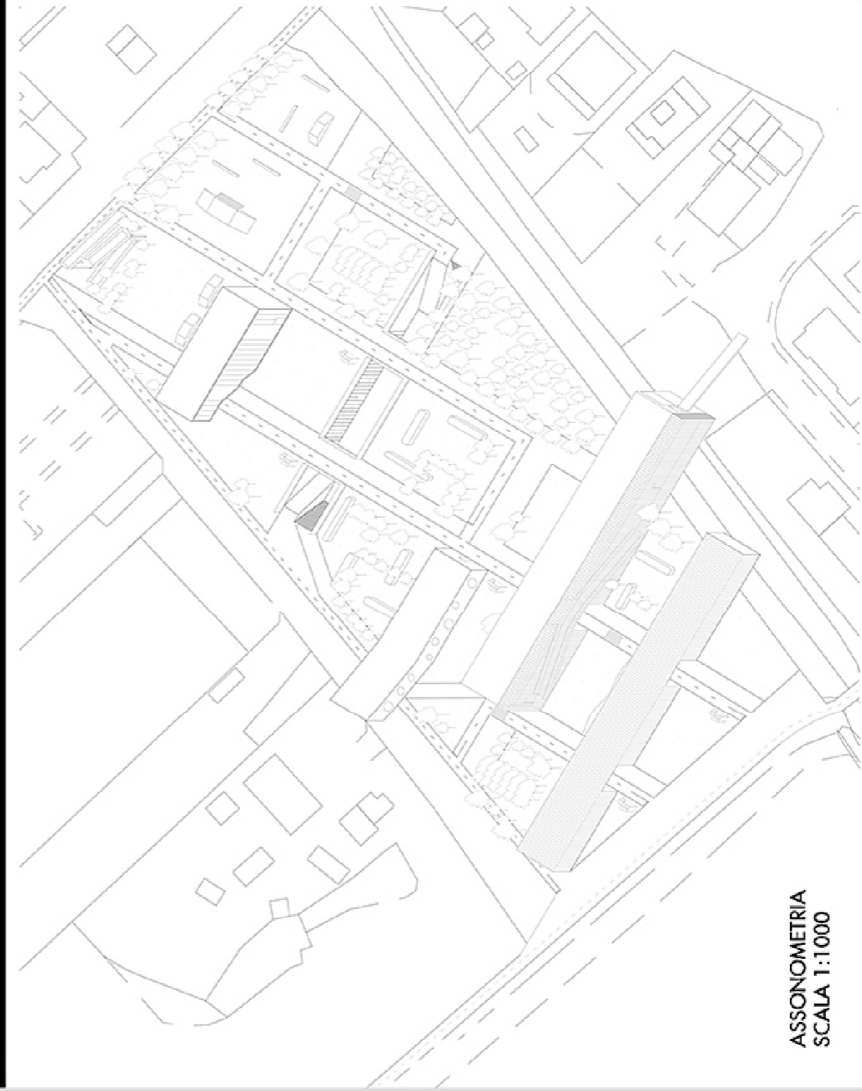
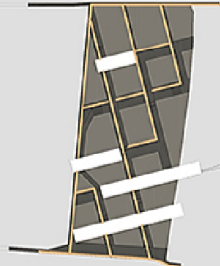
PLANIVOLUMETRIA  
SCALA 1:500



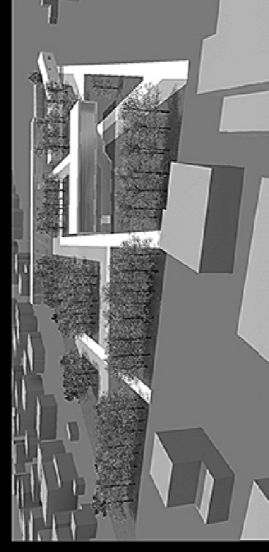
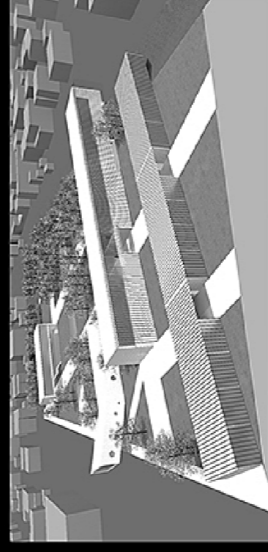
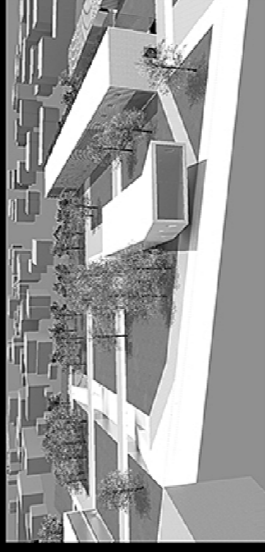
Viabilità pedonale



Viabilità pedonale



ASSONOMETRIA  
SCALA 1:1000

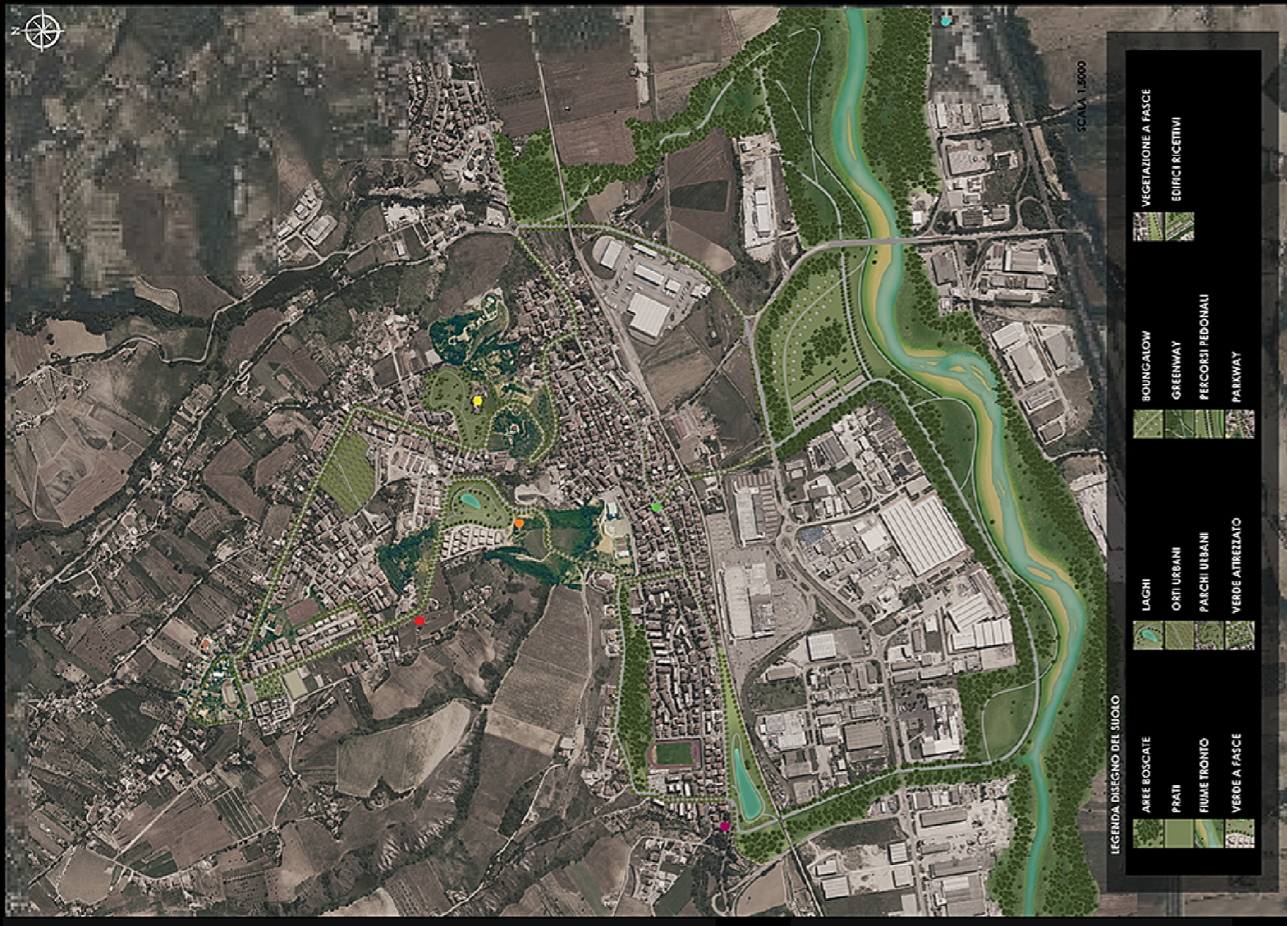
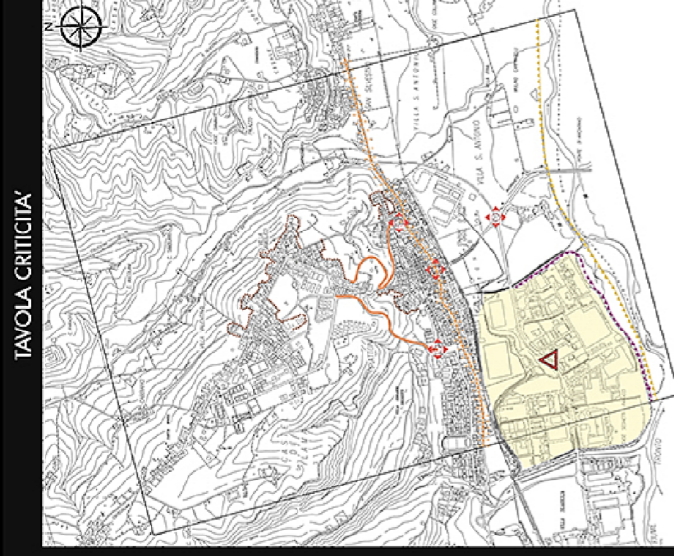
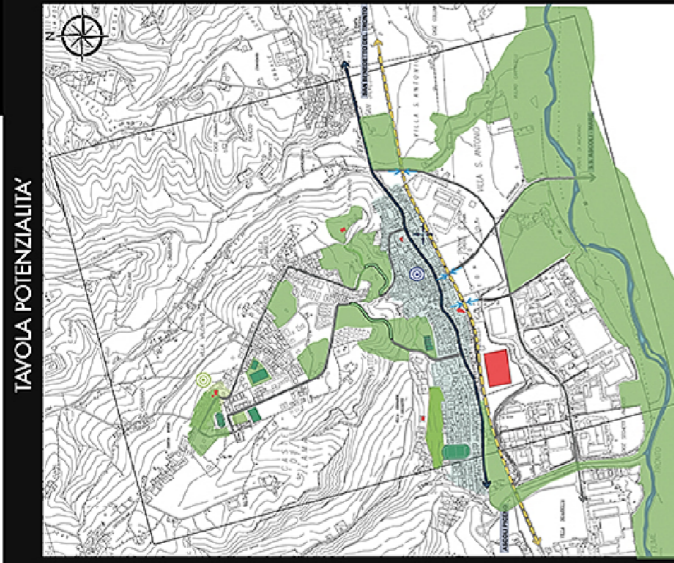


SEZIONE  
SCALA 1:400



SEZIONE  
SCALA 1:400





CARTA GEOPOLOGICA



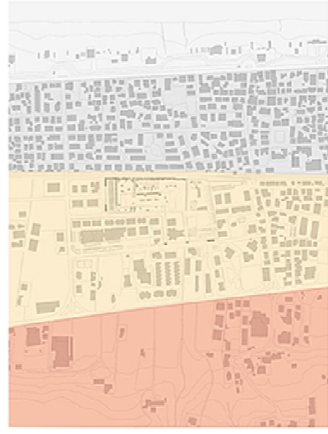
CARTA DELL'USO DEL SUOLO



CARTA DEI VALORI DI PREGIO AMBIENTALE



Laboratorio di progettazione dell'architettura - prof. Emilio Corsaro, prof. Massimo Perriccioli - a.a. 2014/2015 - progetto di un polo scolastico: AGORA - zona: Iorlorato lido (TE)



**Estrusione volumi edifici:**  
 Abbiamo estruso il volume degli edifici e abbiamo individuato gli assi individuali nelle analisi del territorio



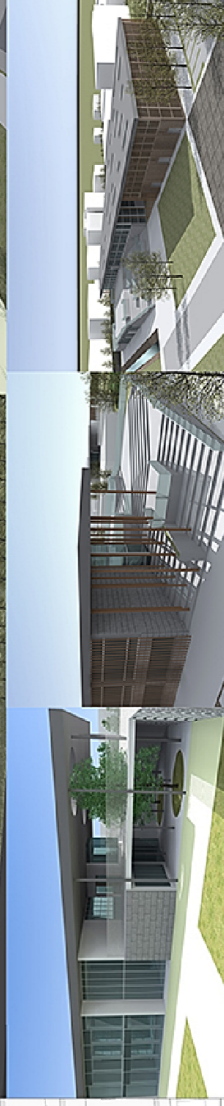
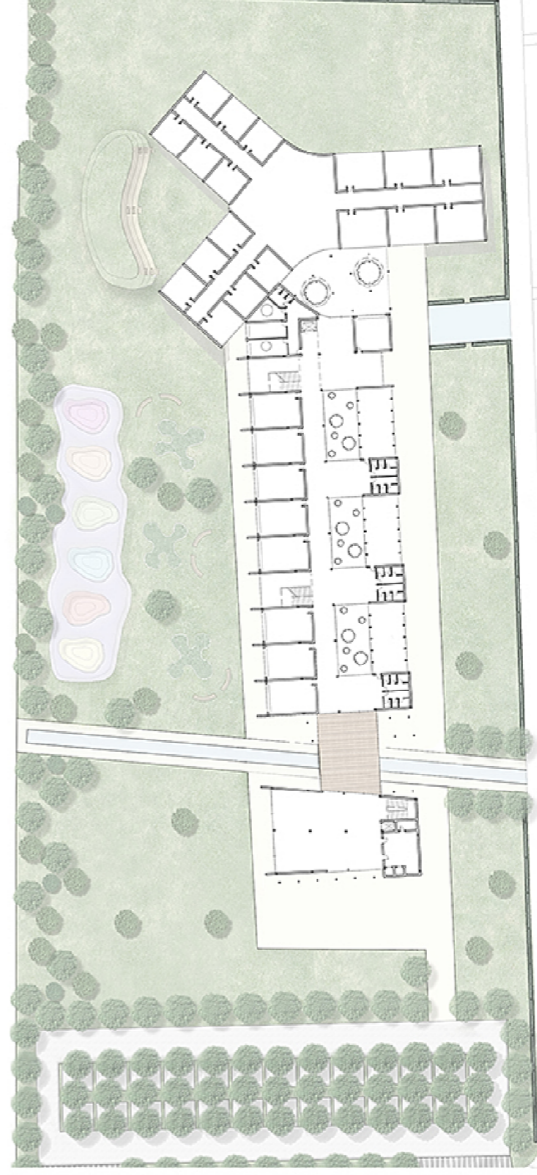
**Sovrapposizione volumi edifici:**  
 Il volume dell'edificio è stato sovrapposto con l'edificio dell'edificio esistente



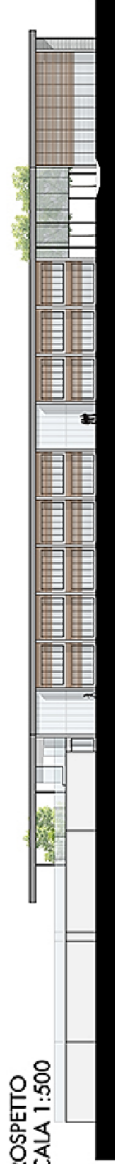
**Creazione area tipogea:**  
 Il suolo affianco l'edificio delle medie si alza creando una scala tipogea



**Sottrazione volumi:**  
 Abbiamo effettuato degli svuotamenti in entrambi i volumi per creare un ampio spazio di ingresso alle medie



PROSPETTO  
 SCALA 1:500



SEZIONE  
 SCALA 1:500

