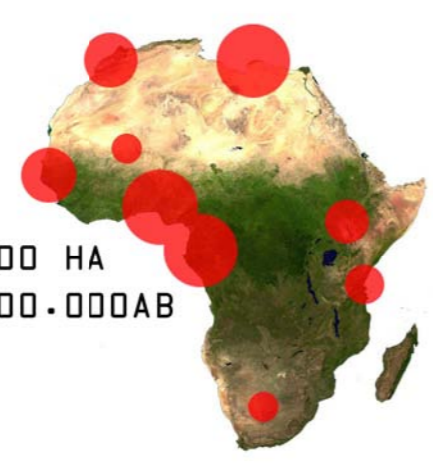
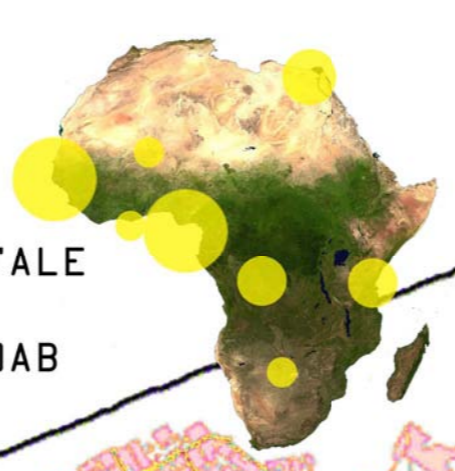




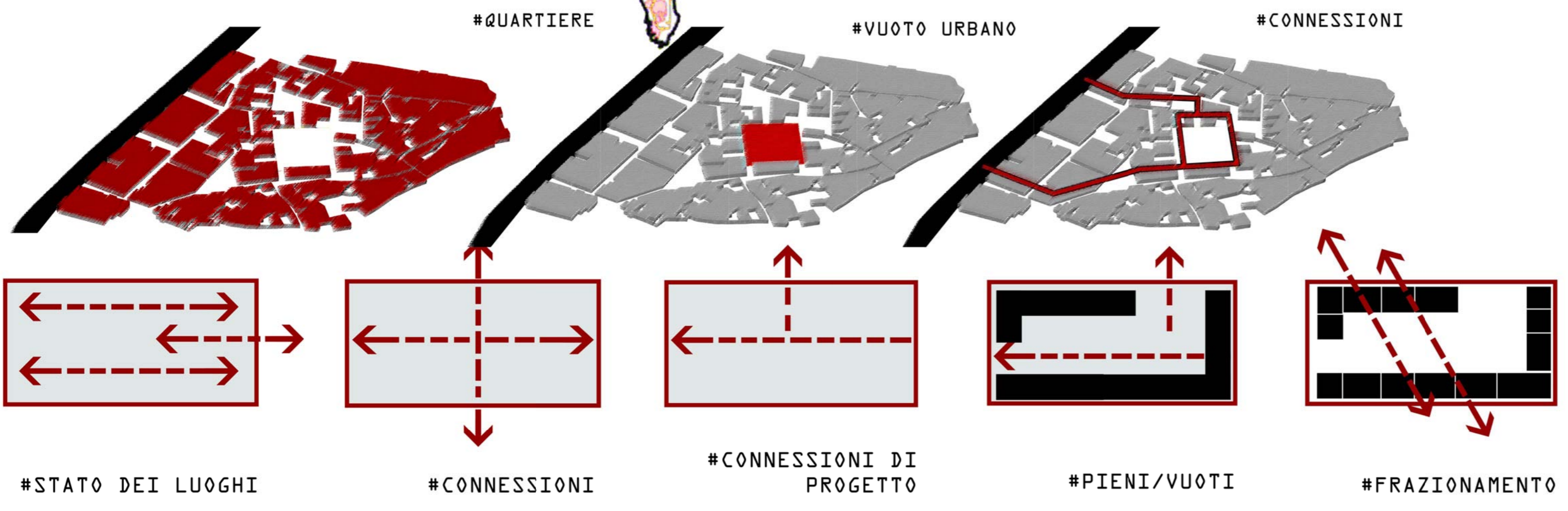
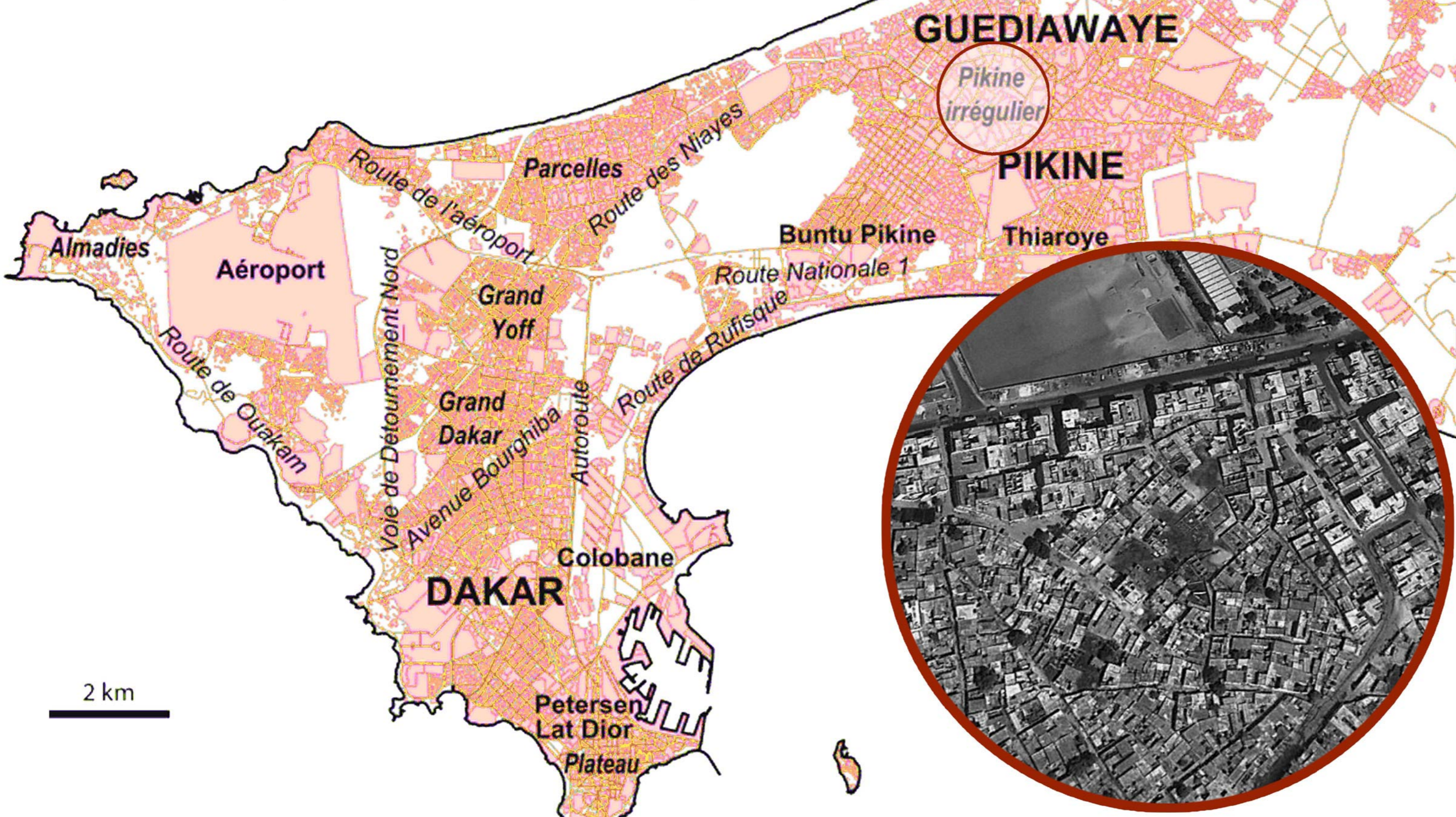
SENEGAL, DAKAR
SUPERFICIE: 55.000 HA
POPOLAZIONE: 2.900.000AB
DENSITA': 52AB/HA



POPOLAZIONE TOTALE
DAKAR: 2.900.000AB

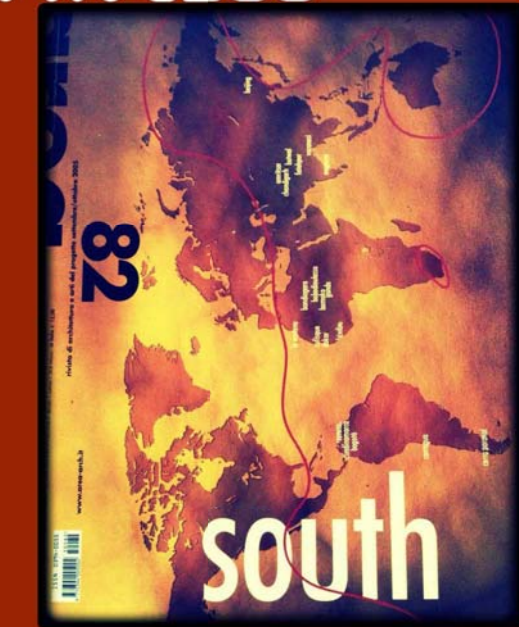


POPOLAZIONE SLUM
DAKAR: 2.000.000AB



PLANIVOLUMETRICO
SCALA 1:500

START-UP(!) PROCESS



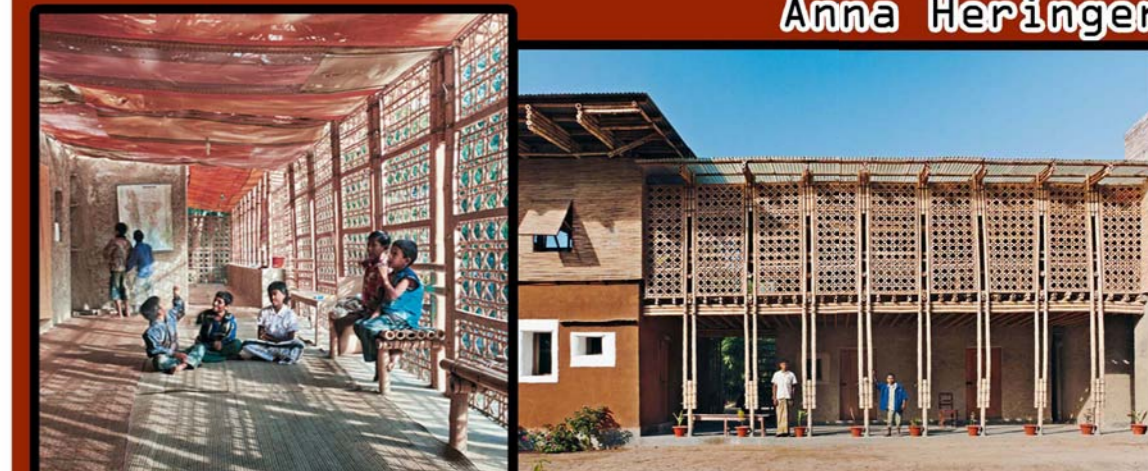
"ARCHITETTURE PER L'UOMO... ARCHITETTURE VIVE."



"Mi sentivo come nel cuore di una tana di formiche: tutti indossavano dei vestiti cos  colorati che, sullo sfondo, sprizzavano fuori come macchie di colore su una fotografia in bianco e nero [...]"

(Sette Giorni a Dakar - M. Giannini, L. Macchiavelli)

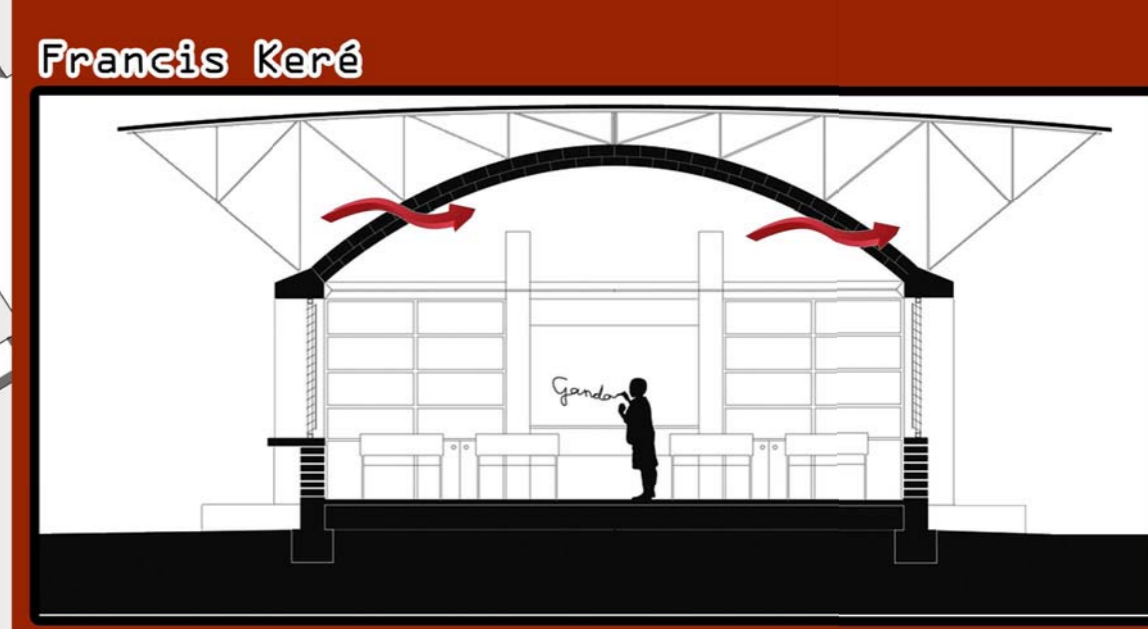
SOBRIETA', ECONOMIA, ESSENZIALITA' - Anna Heringer



Arch. Roberto Filippetti, Modernit  Ibride

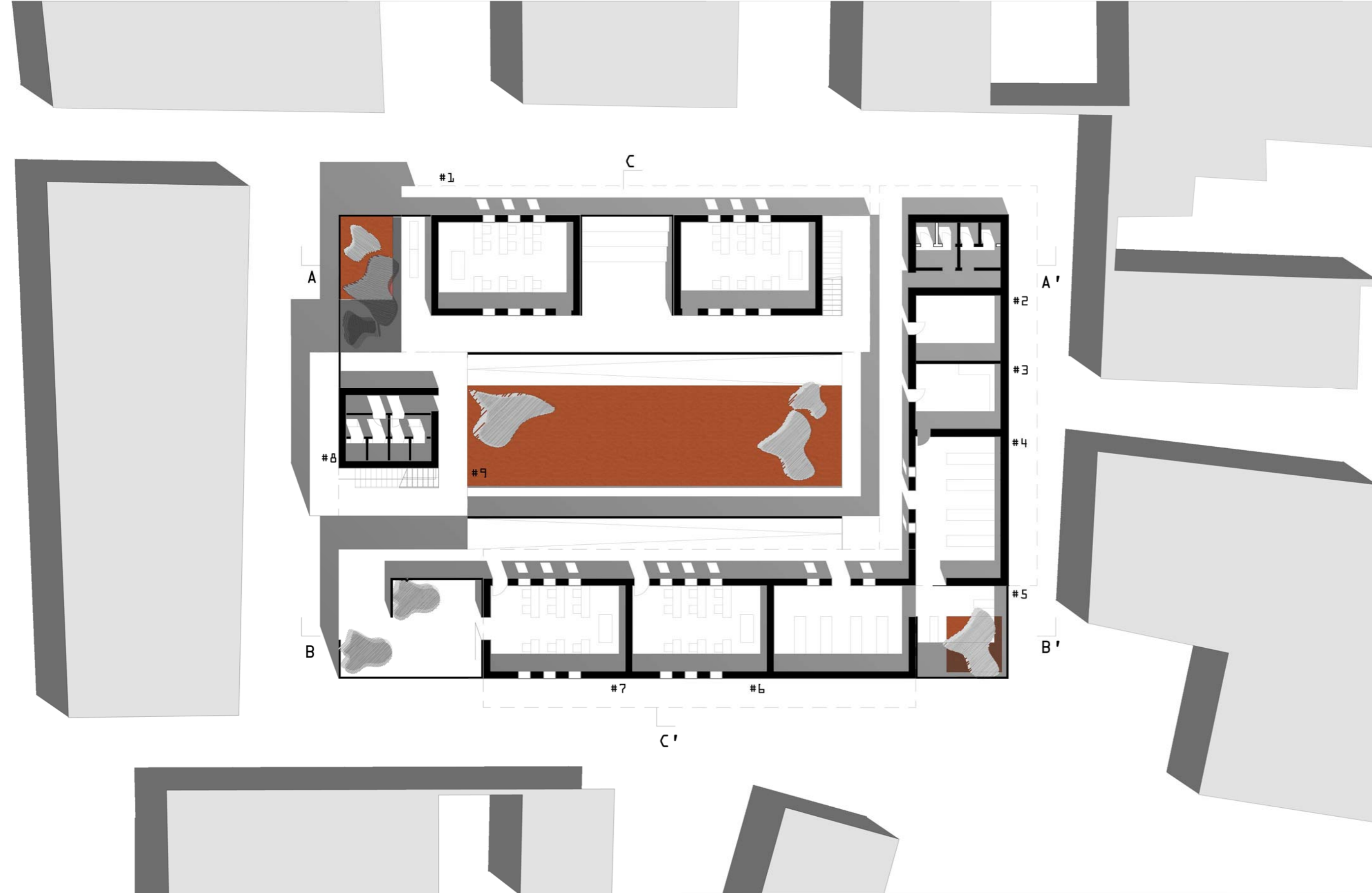


Arch. Chiara Tonelli, Double Roof House - la massa come sistema passivo

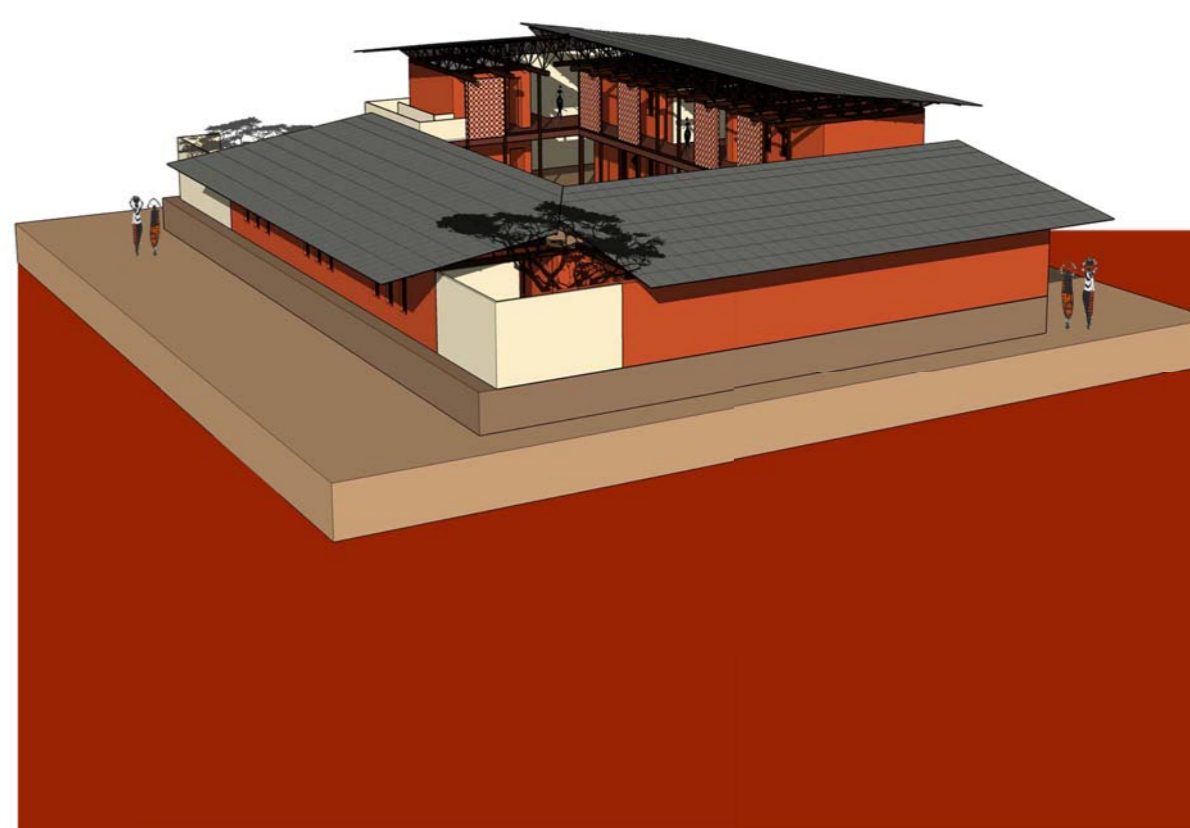
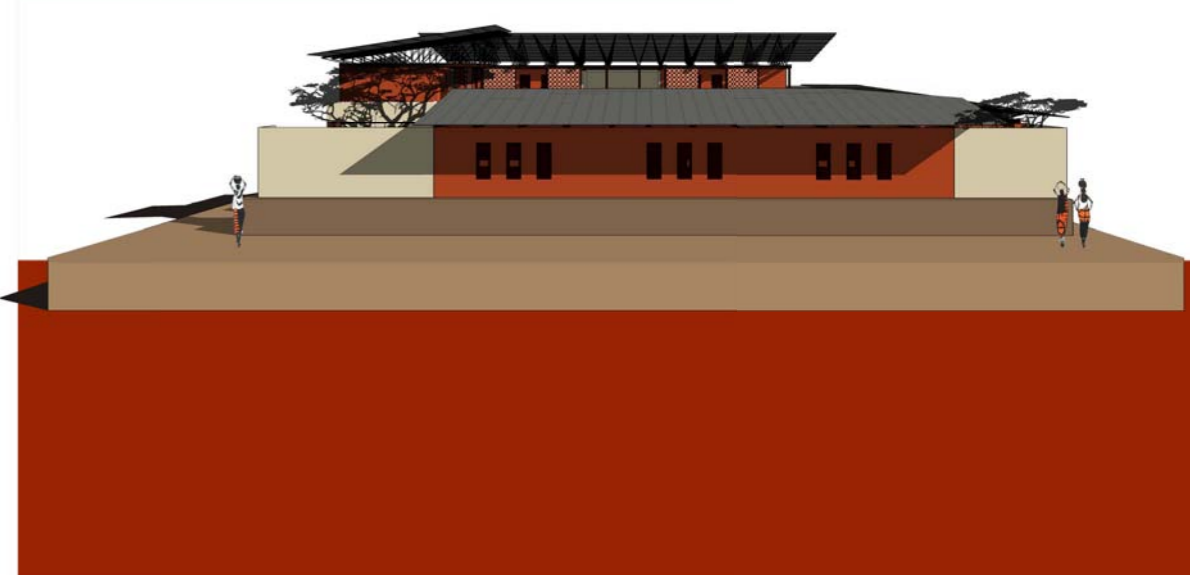


Francis Ker 

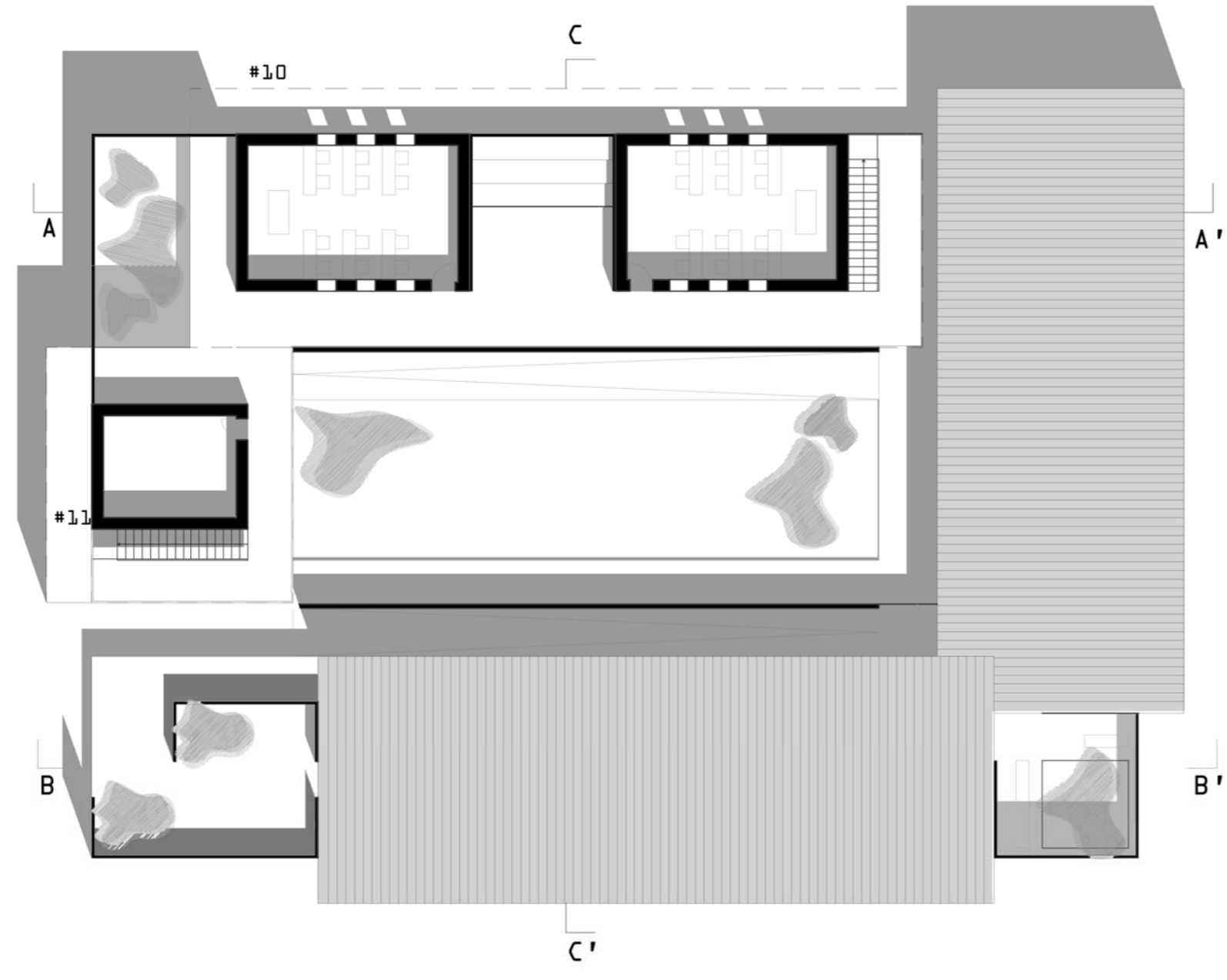




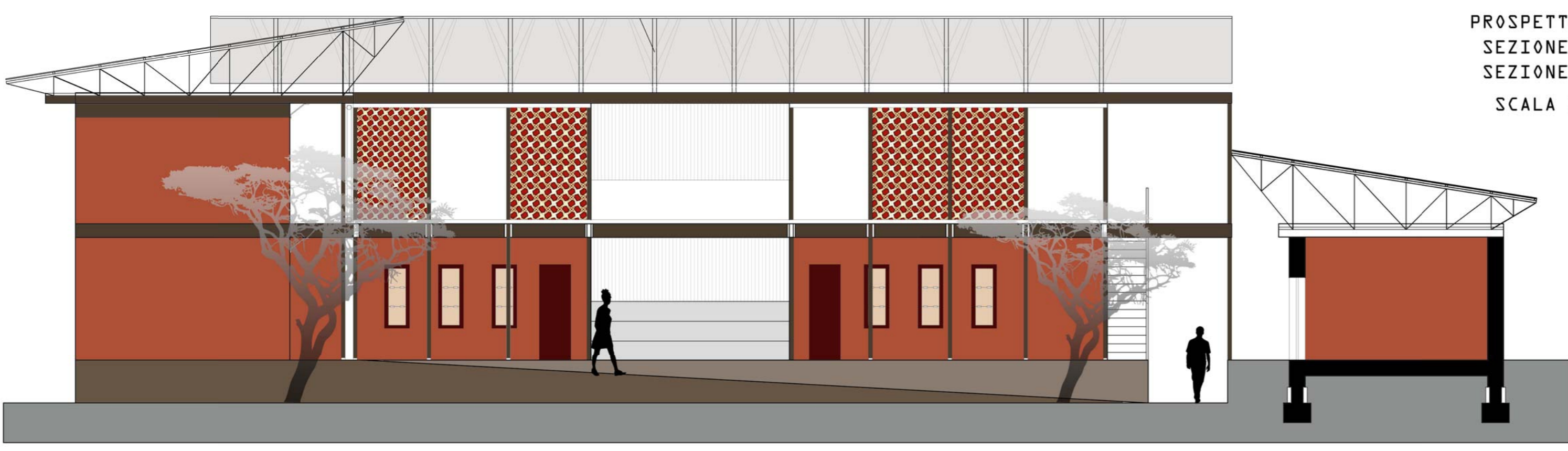
PLANIMETRIA PIANO TERRA
SCALA 1:200



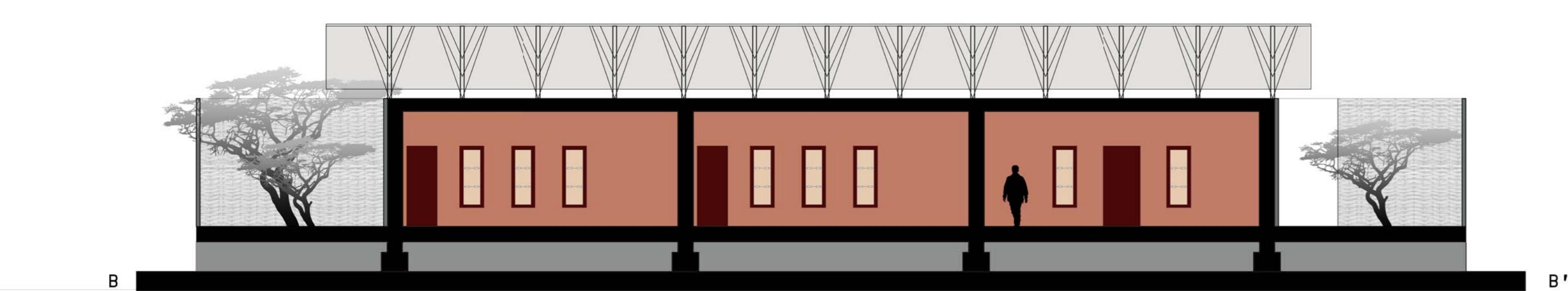
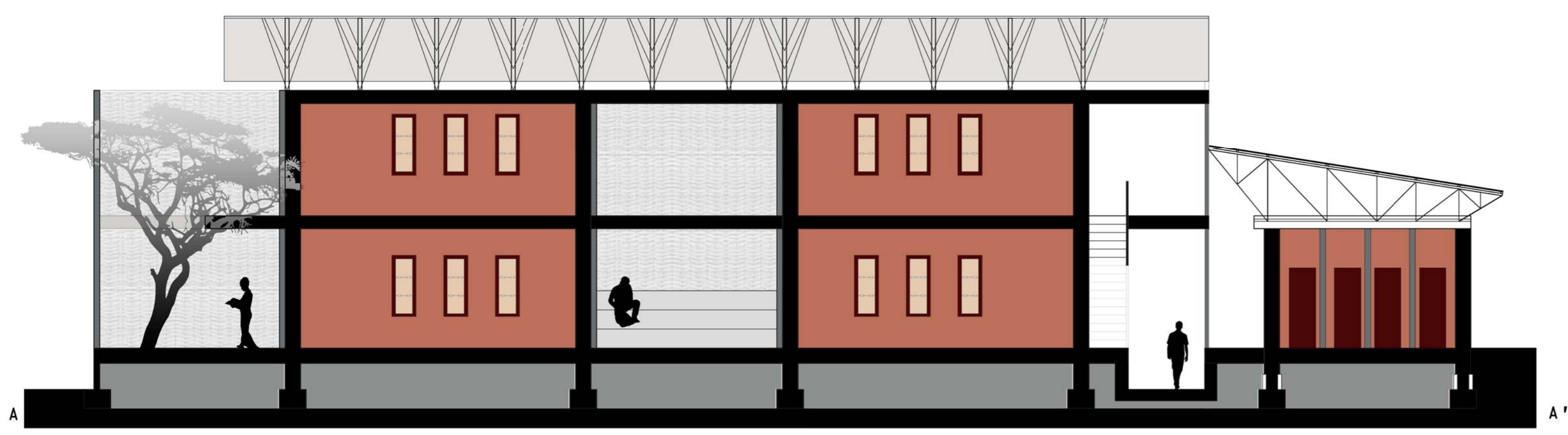
- #1- SCUOLA PRIMARIA
- #2- MAGAZZINO
- #3-CUCINA
- #4-MENSA
- #5- SPAZI COMUNI
- #6-LABORATORI
- #7- SCUOLA DI FORMAZIONE EDILE
- #8-SERVIZI
- #9-CORTE INTERNA
- #10-SCUOLA PROFESSIONALE TAGLIO E CUCITO
- #11-MAGAZZINO

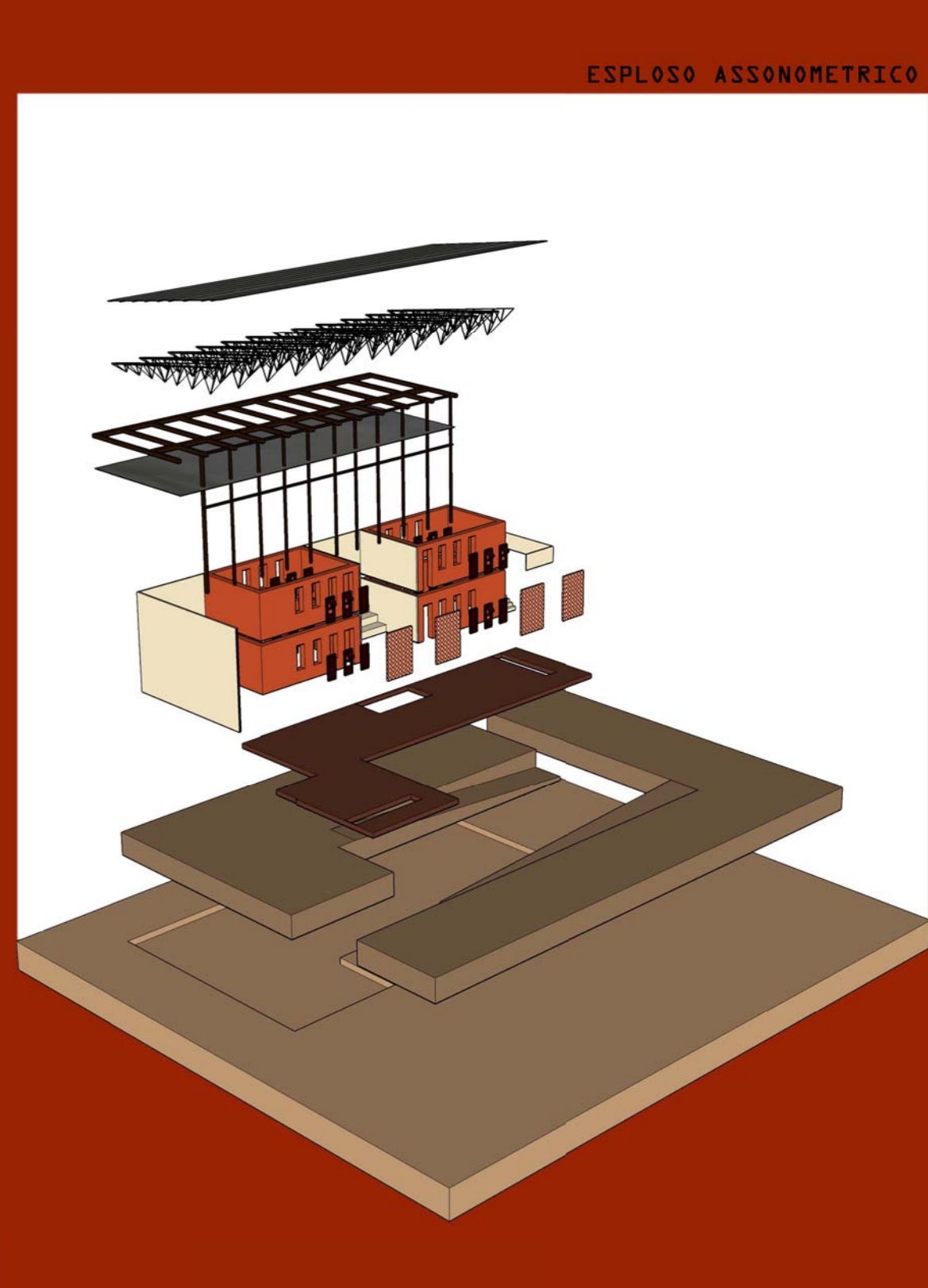
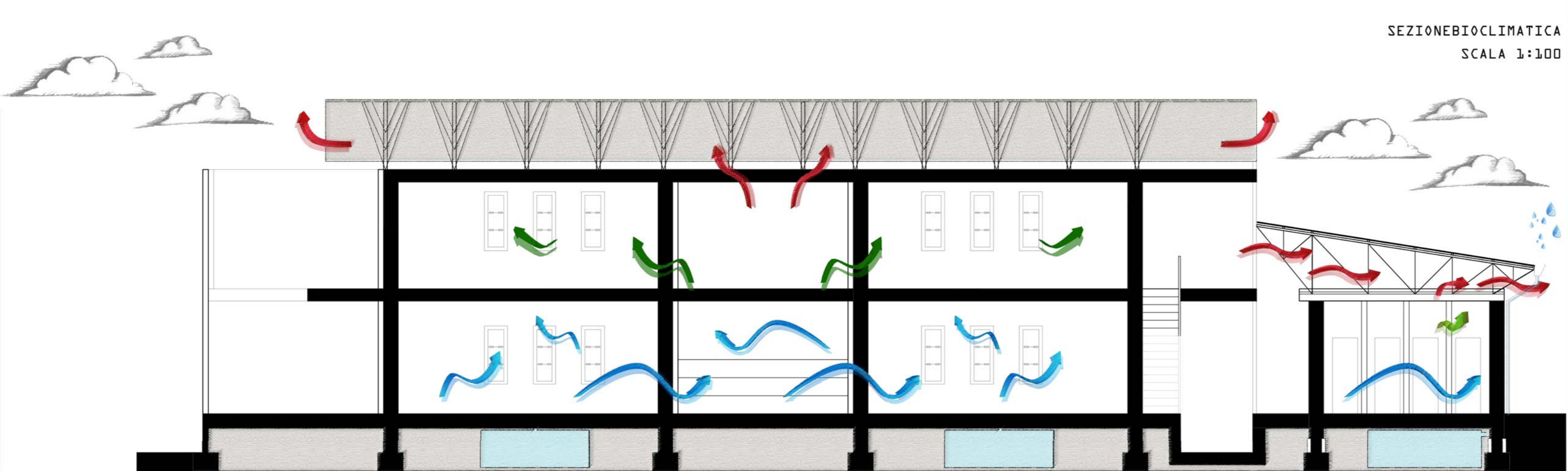
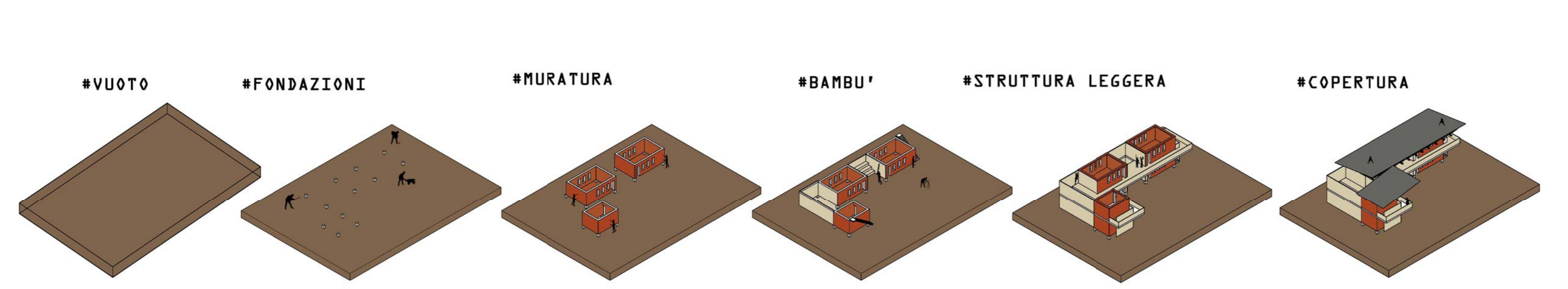
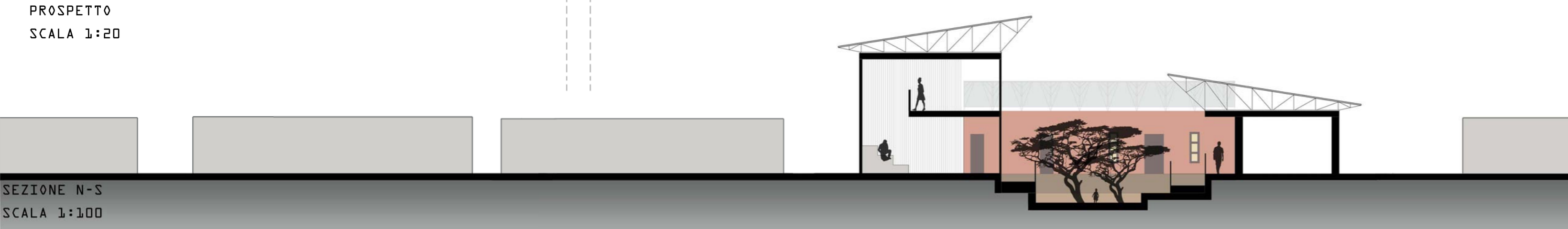
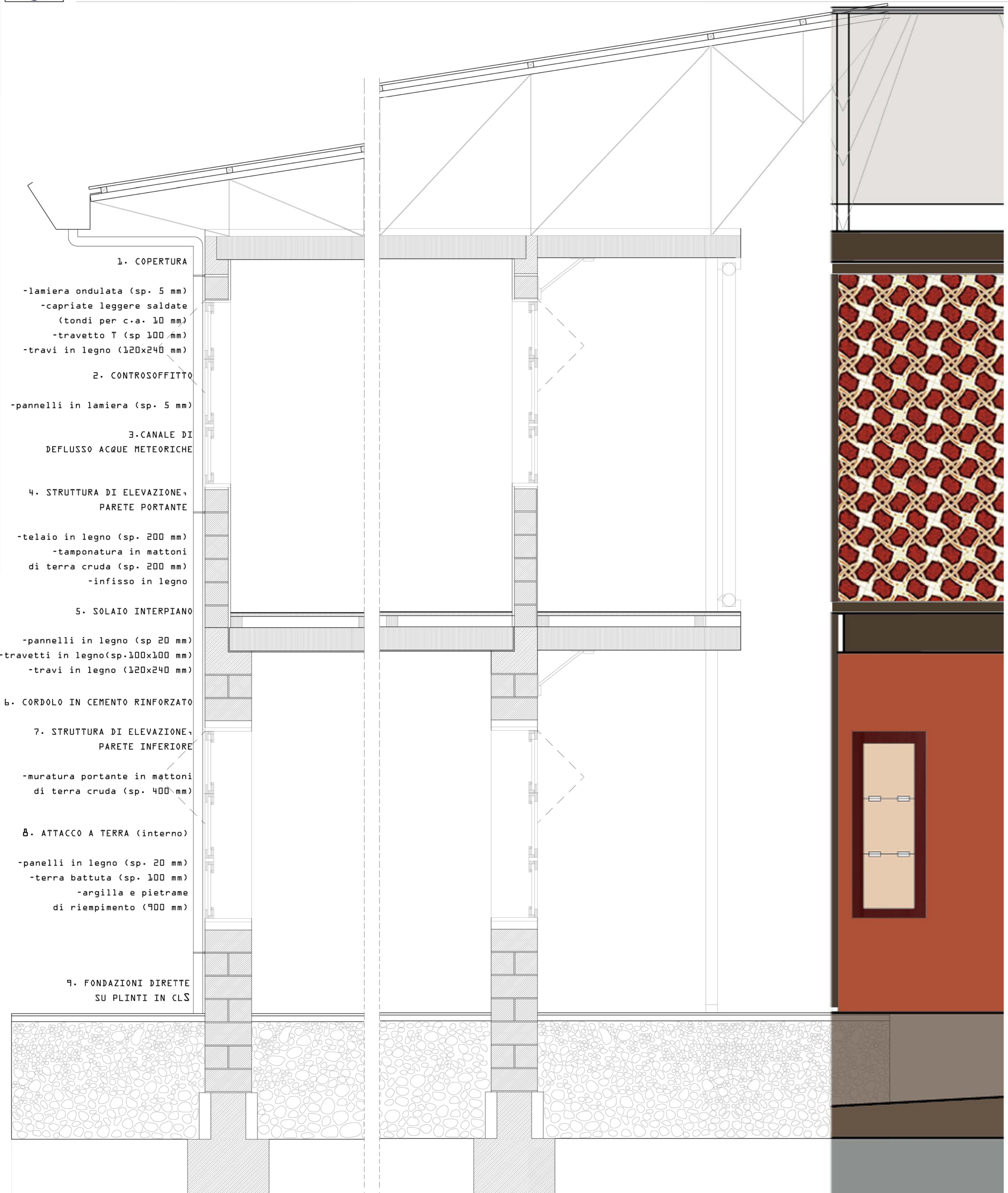


PLANIMETRIA PIANO PRIMO
SCALA 1:200



PROSPETTO N-0
SEZIONE A-A'
SEZIONE B-B'
SCALA 1:100

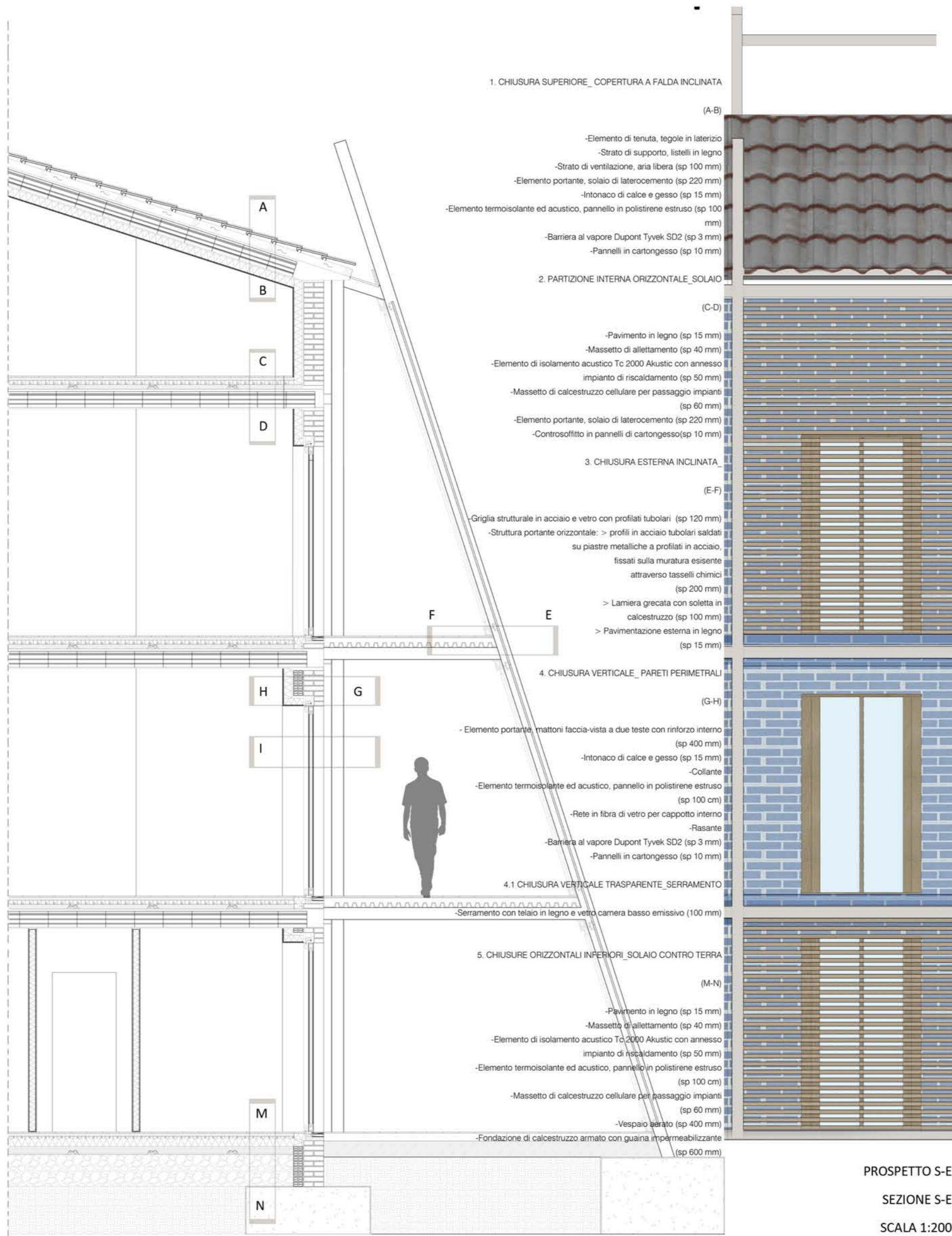




UPGRADE... RIQUALIFICAZIONE DELLO SPAZIO APERTO E COSTRUITO



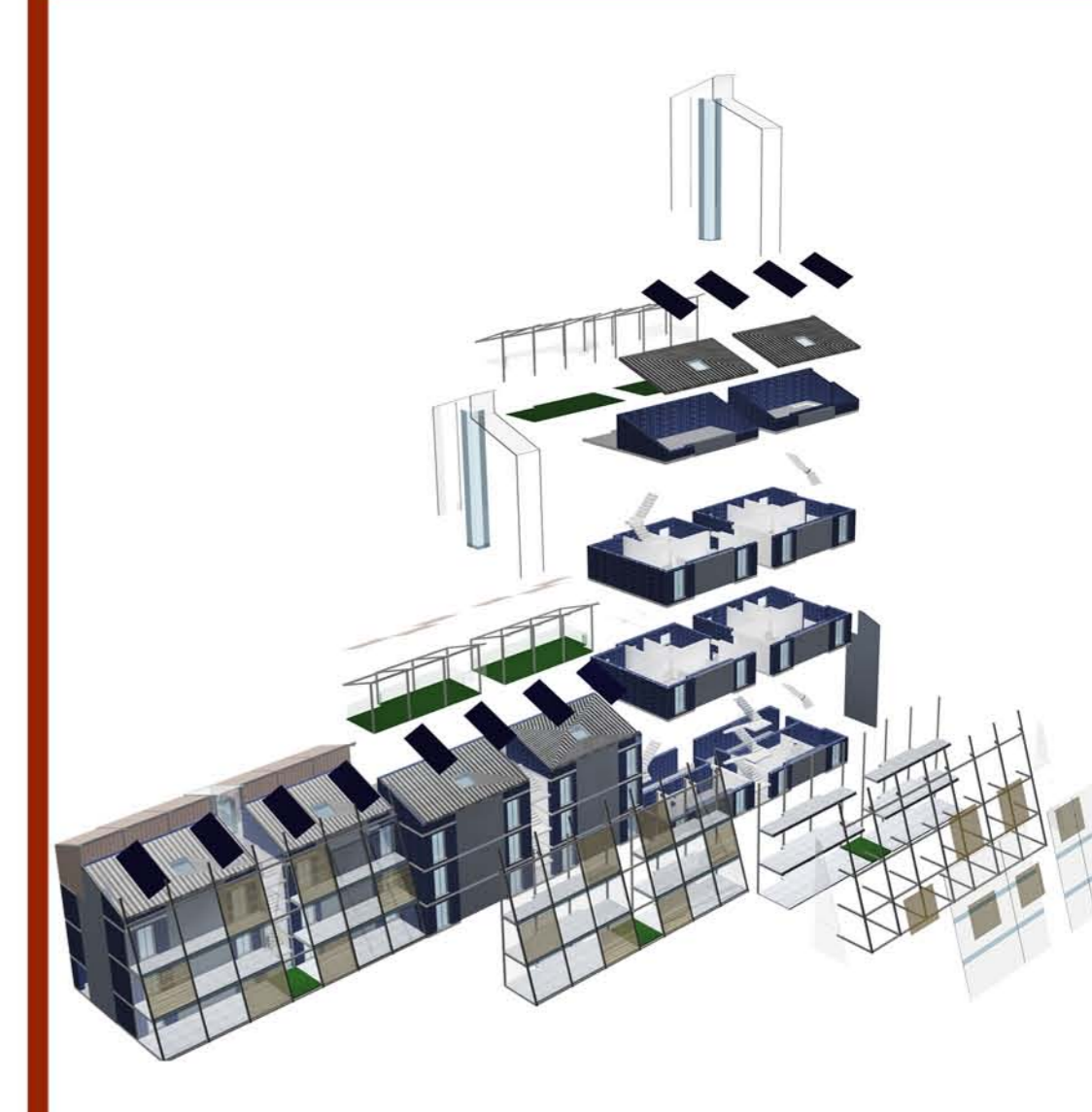
CO-HOUSING



Laboratorio Costruzione dell'Arch.ra C
A.A. 2011-2012
Prof. Roberto Ruggiero
Prof. Giorgio Passerini

Ascoli Piceno - Zona Tofare

SCHERMARE AMPLIARE
CAPTARE SVUOTARE
ADDIZIONARE



Laboratorio Progettazione dell'Arch.ra A
A.A. 2012-2013

Prof. Luigi Coccia
Prof. Roberto Ruggiero

SOCIALITA'

INTEGRAZIONE DI FUNZIONI

