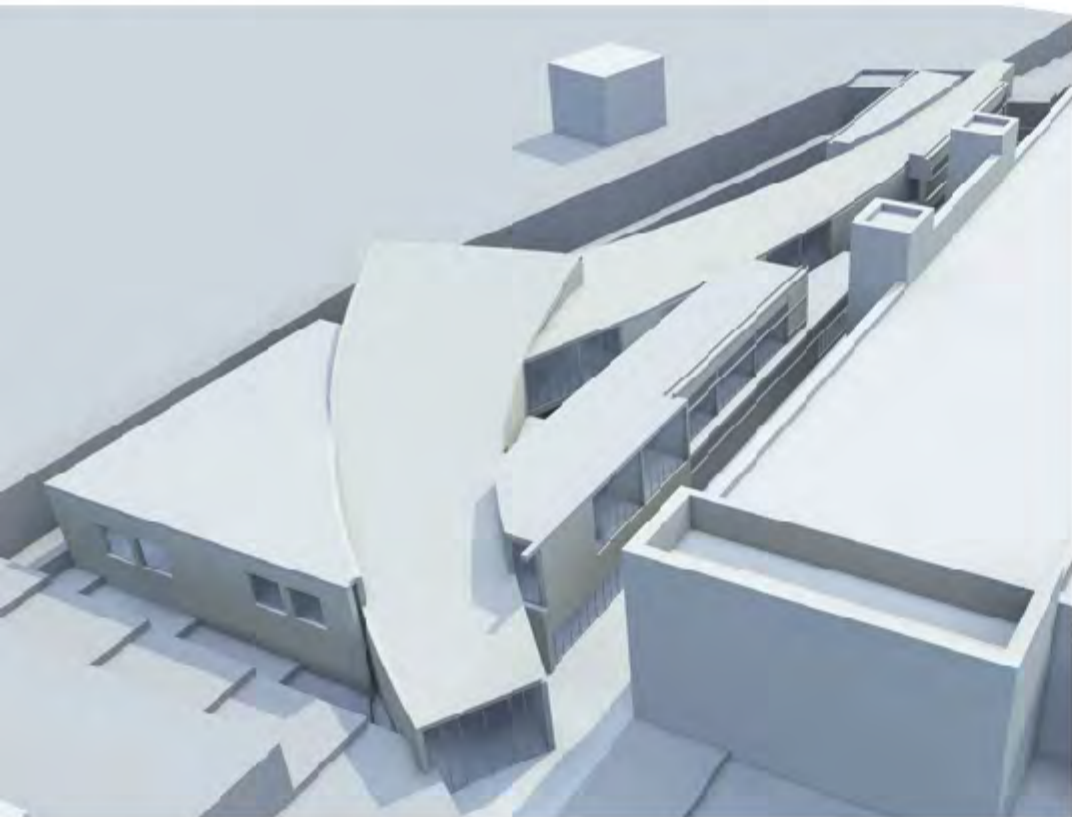
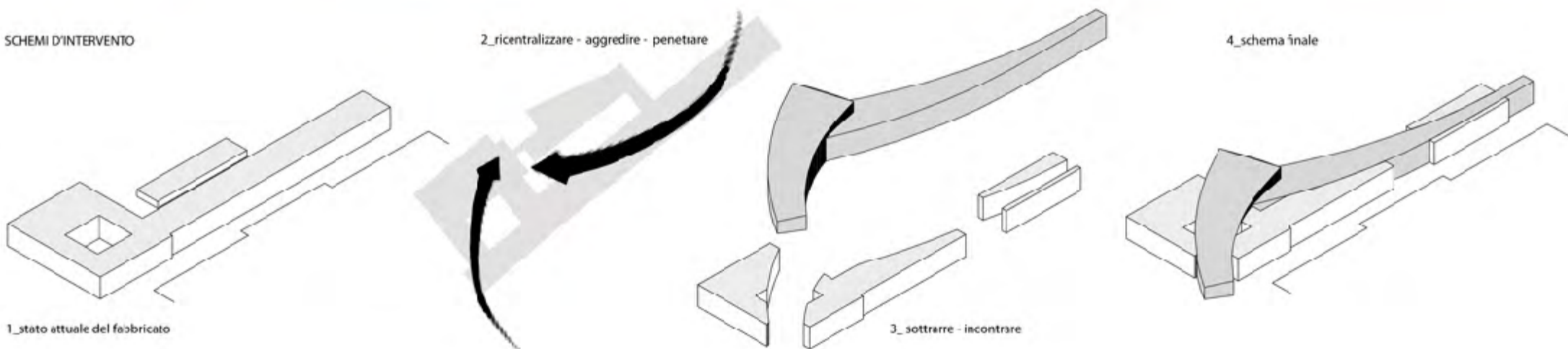


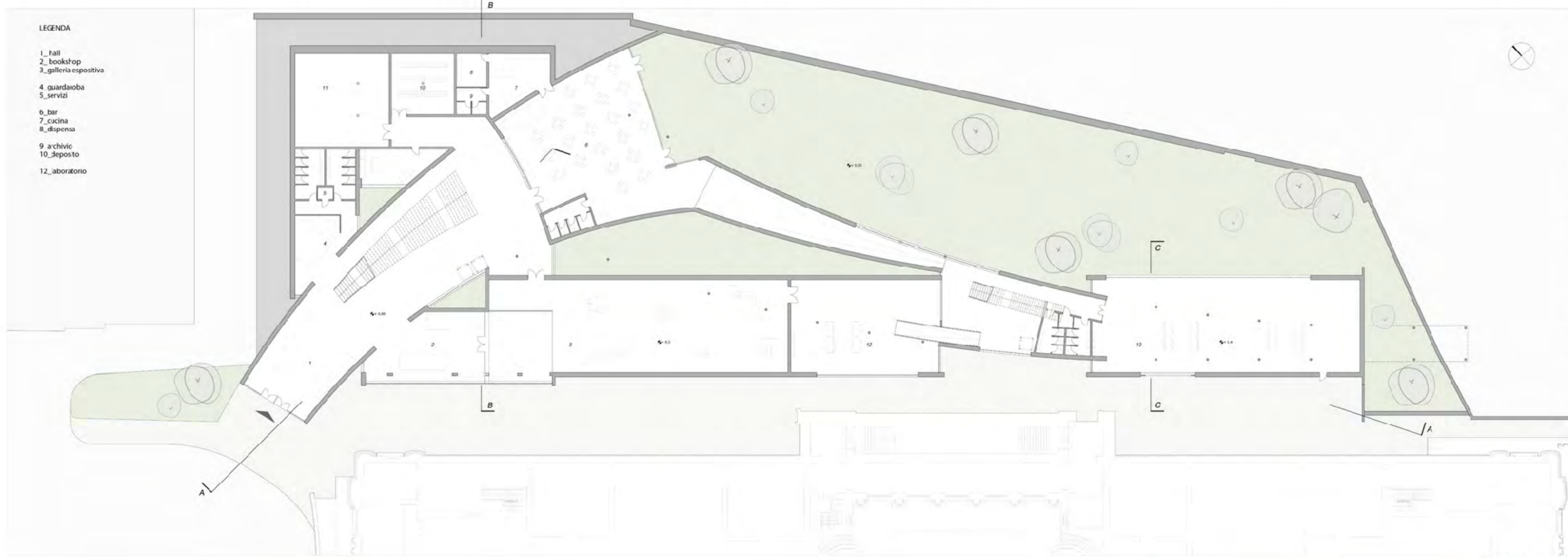
RENDER D'INSIEME

PLANIVOLUMETRICO 1:1000



SCHEMI D'INTERVENTO





PLANIMETRIA PIANO TERRA



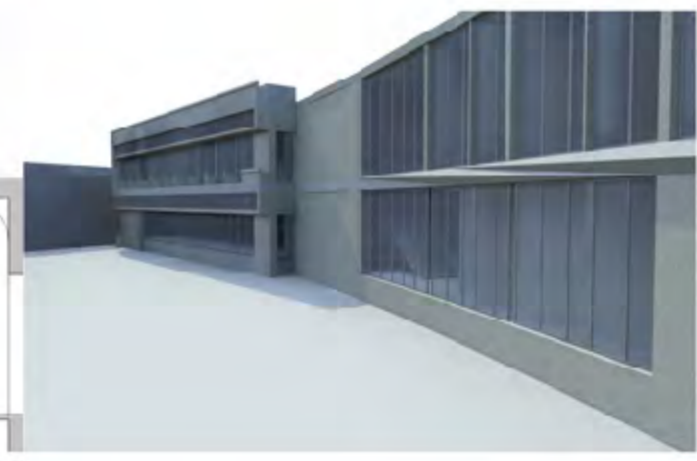
PLANIMETRIA PIANO PRIMO
 scala 1:500



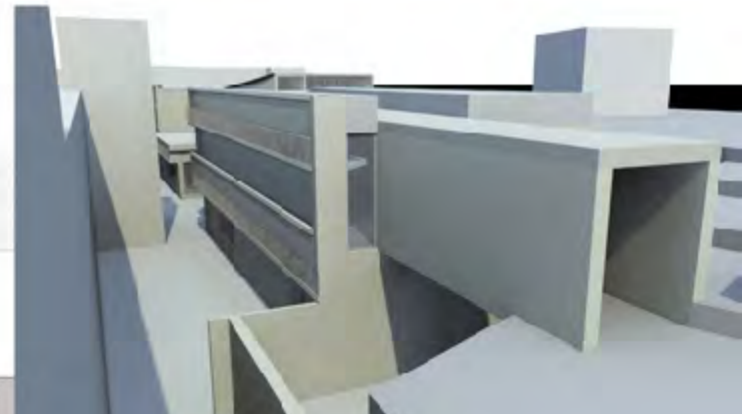
SEZIONE B-B'



SEZIONE C-C'



SEZIONE A-A'



RIFERIMENTI PROGETTUALI:

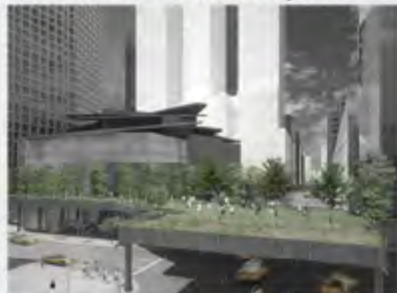
LABORATORIO DI COSTRUZIONE DELL'ARCHITETTURA A _ PROF. M.Perriccioli - R. Cocci Grifoni _ a.a. 2009 - 2010

GARDEN EXIBITON - Eberswalde 2002



T
O
P
O
T
E
K
I

HUDSON YARD - New York City 2007



S
T
E
V
E
N
H
O
L
L

SPACEBOX 2003



D
E
J
O
N
G
&
D
E
V
I
J

PARKRAND HOUSING - Amsterdam 2007

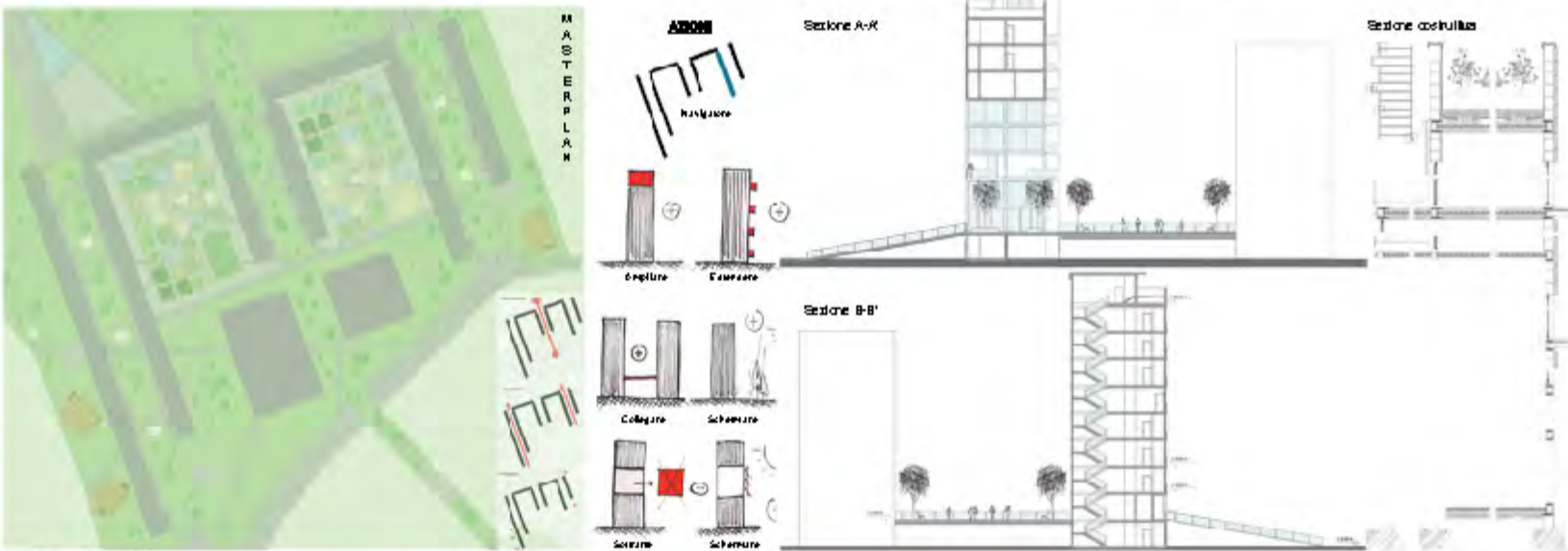


M
V
R
D
V

WOZCO APARTMENTS - Amsterdam 1997



M
V
R
D
V



LABORATORIO DI PROGETTAZIONE URBANA A _ PROF. A.R. Emili_ a.a. 2009 - 2010



Pianificazione generale



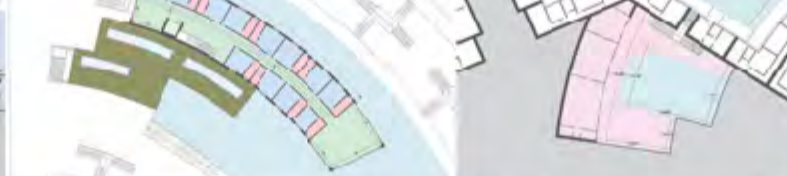
Disposizione bungalow



Sezione punto di bro



Sezione insuerrata hotel



Sezione bungalow

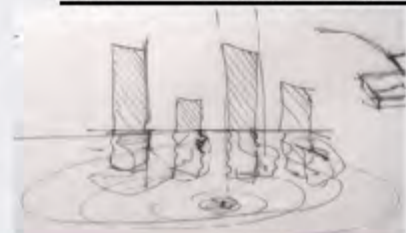


Sezione longitudinale hotel

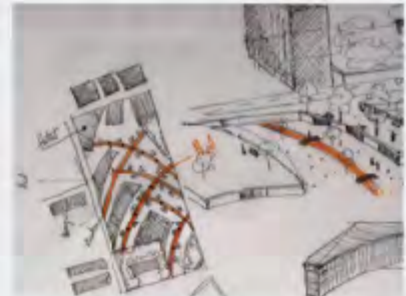
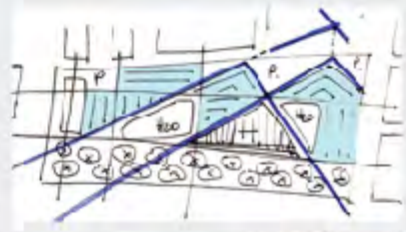


SCHIZZI PROGETTUALI:

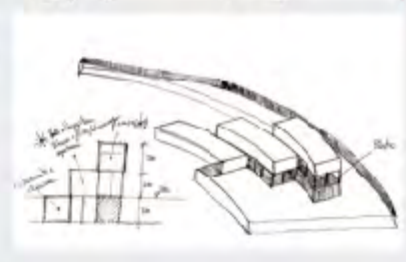
R
I
F
L
E
S
S
O



S
O
L
U
Z
I
O
N
I
A
R
E
A



I
D
E
A
H
O
T
E
L



RIFERIMENTI PROGETTUALI:

LABORATORIO DI PROGETTAZIONE DELL'ARCHITETTURA A _ PROF. L. Cocchia - R. Ruggiero _ a.a. 2010 - 2011

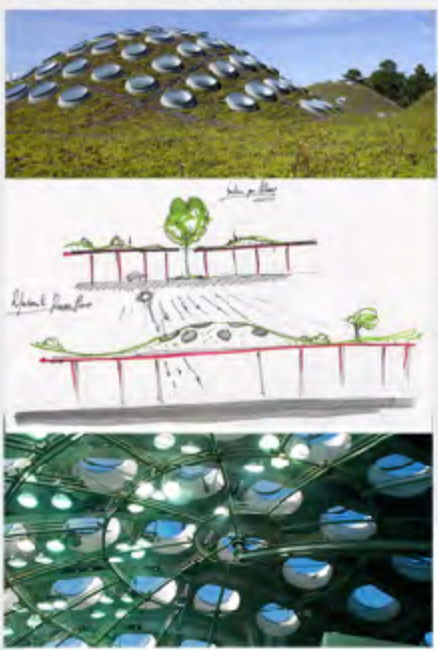
MARITIME YOUTH HOUSE - Copenhagen 2002



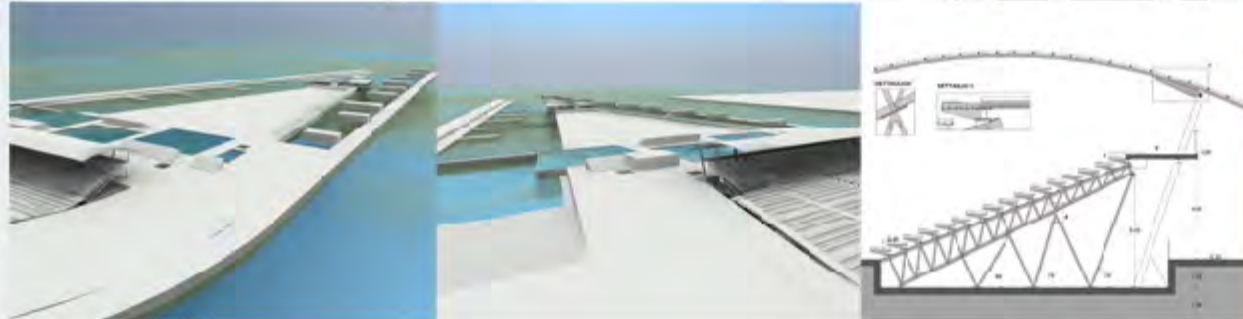
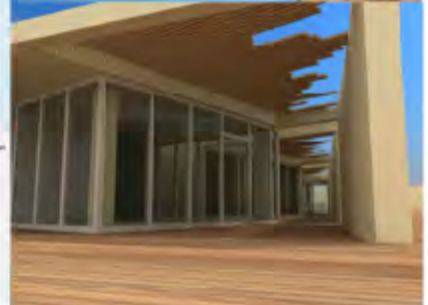
DES
SMETH
&
INGELS



GREEN MUSEUM - San Francisco 2007



RENZO
PIANO



LABORATORIO DI PROGETTAZIONE URBANISTICA A _ PROF. M. Sargolini - V. di Palma _ a.a. 2009 - 2010

IDEE PROGETTUALI:



CICLISTABILE



CAMPING



ATTREZZATO
PARCZO



RESIDENZE

