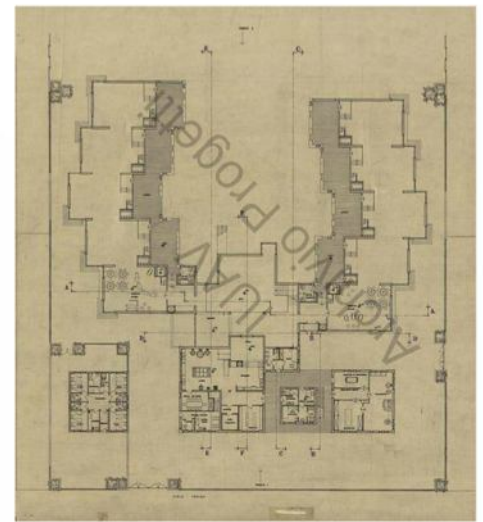


Colonia\_Sip-Enel\_Giancarlo\_De\_Carlo\_Riccione\_1963

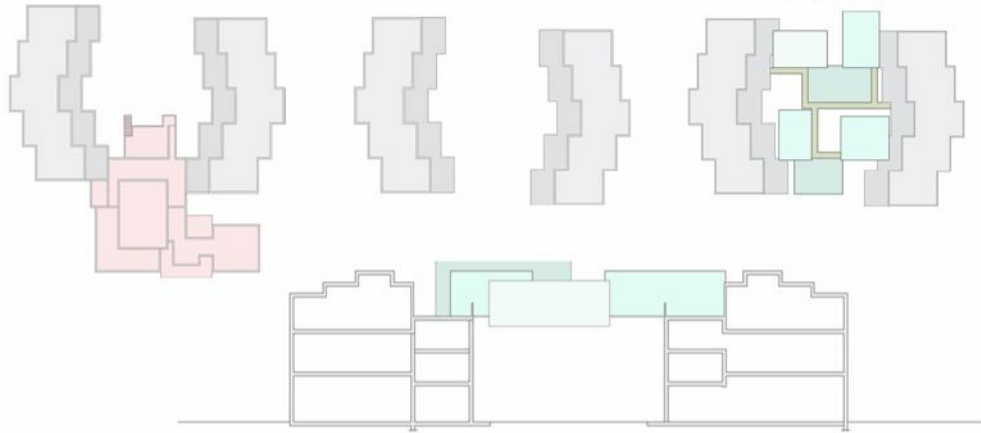


Concept

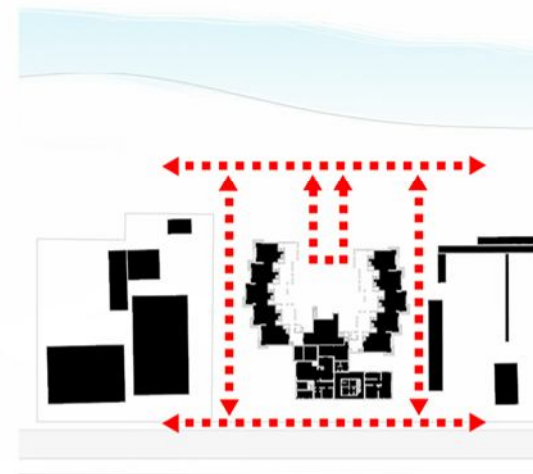
Stato\_di\_fatto

1° Intervento\_ demolizione

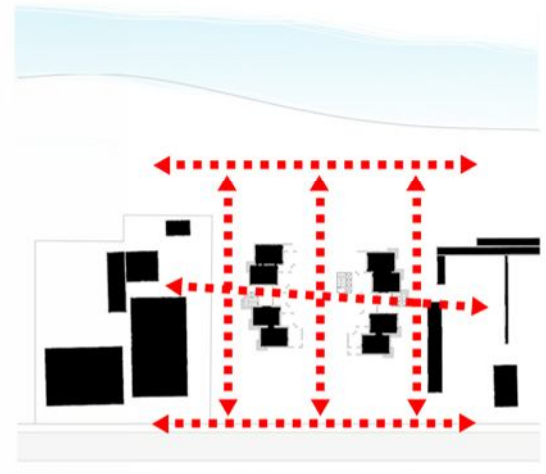
2° Intervento\_ progetto



Permeabilità\_pedonale  
Stato\_di\_fatto



Progetto



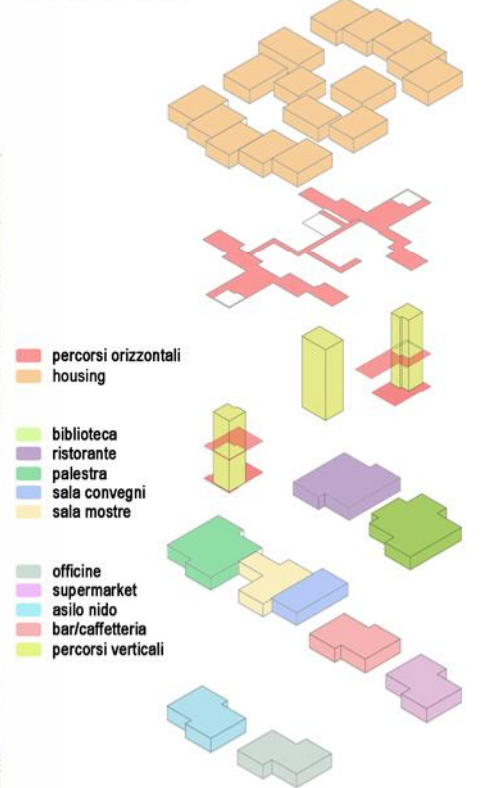
Masterplan\_scala 1:1000



Pianta copertura scala 1:500

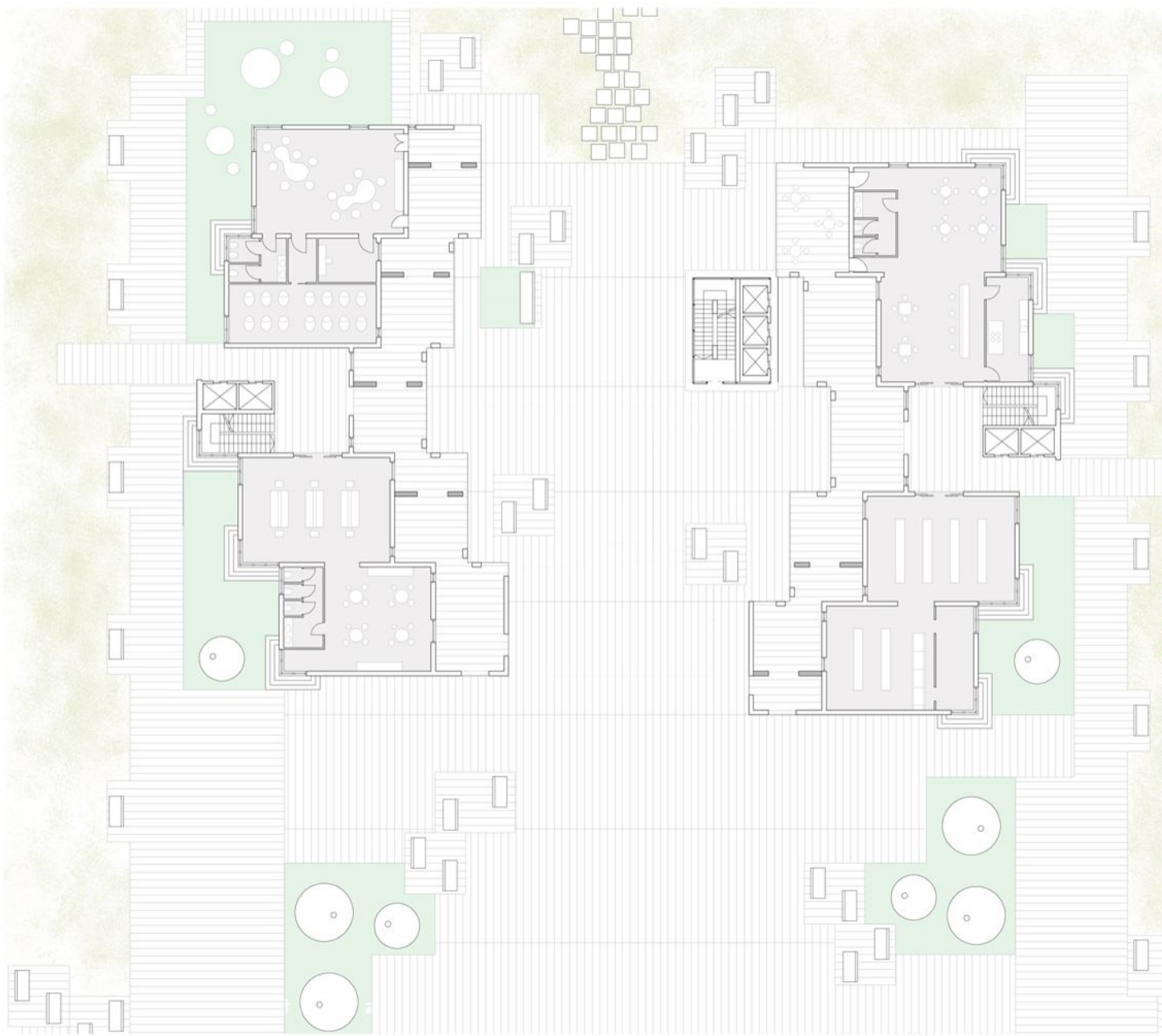
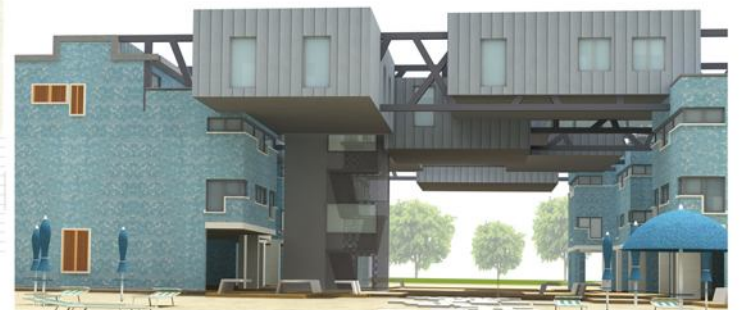


Schema\_funzionale





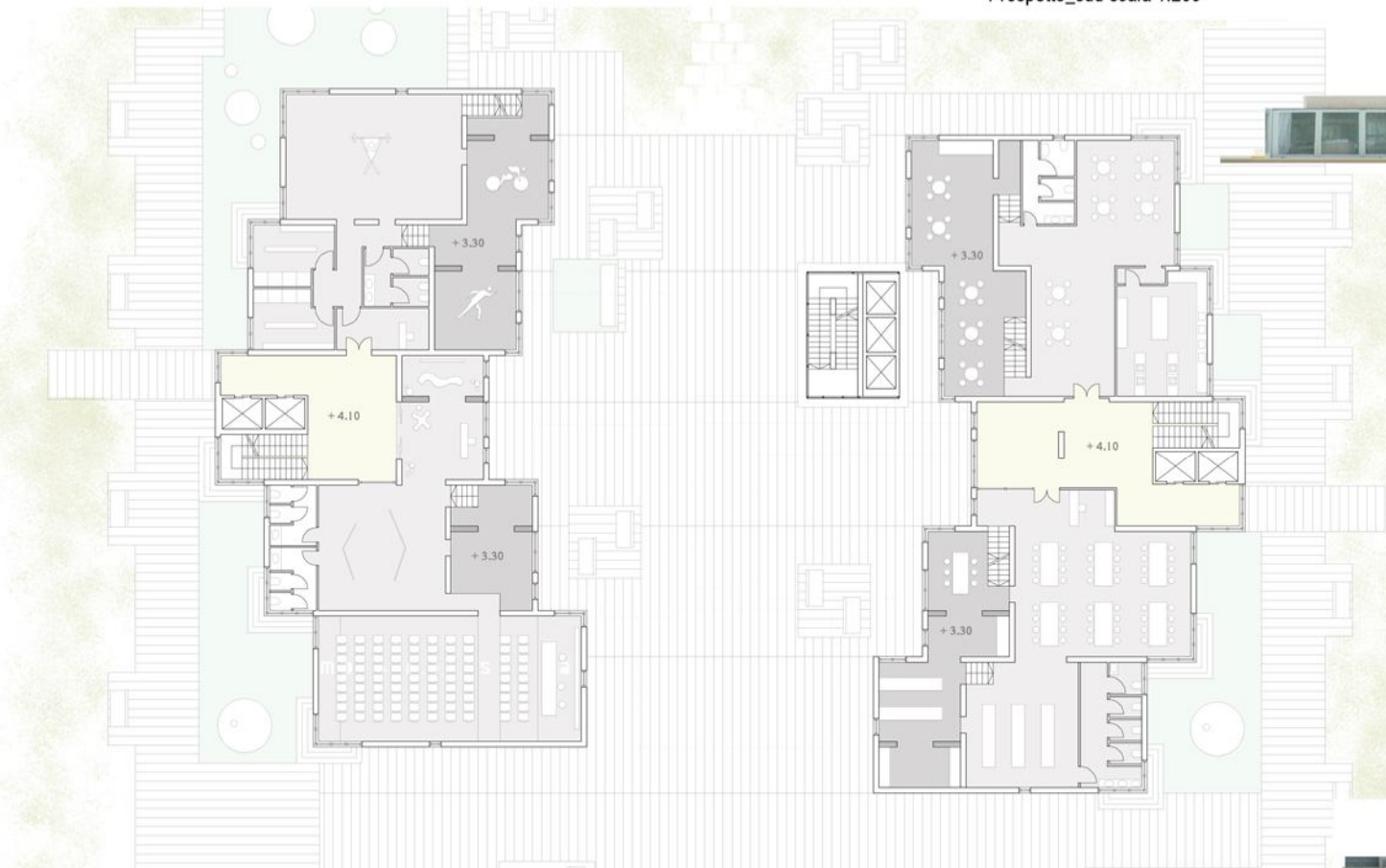
Prospetto\_nord scala 1:200



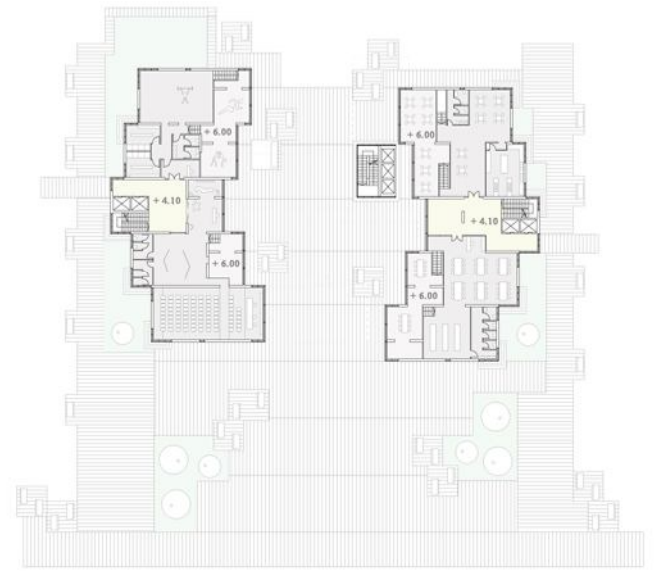
Pianta\_+0.00 scala 1:200



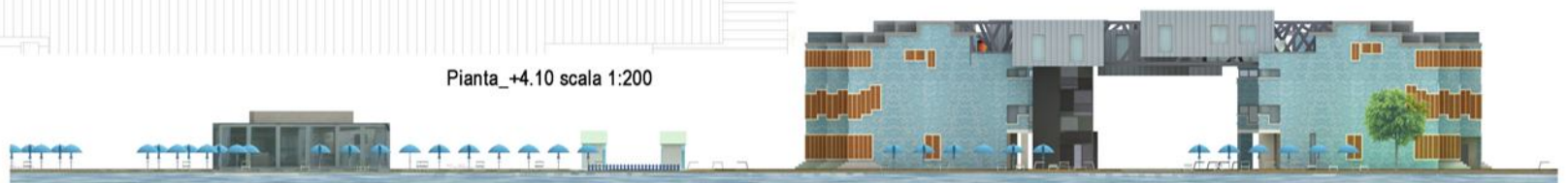
Prospetto\_sud scala 1:200



Pianta\_+4.10 scala 1:200

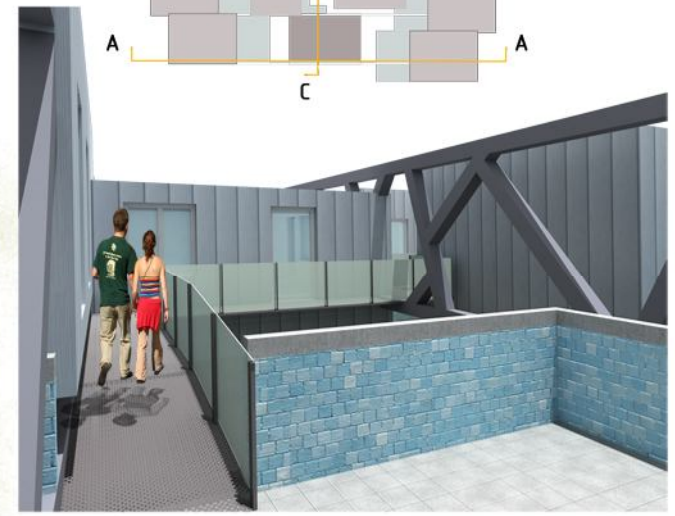
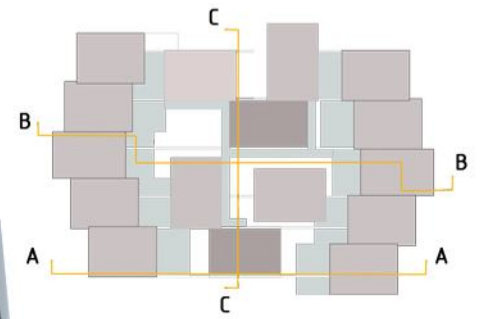


Pianta\_+6.00 scala 1:500





Sezione\_A-A scala 1:200



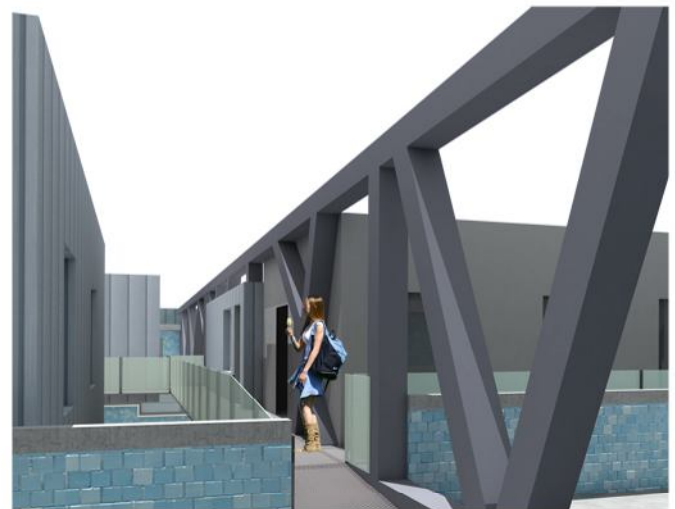
Pianta\_+8.70 scala 1:200



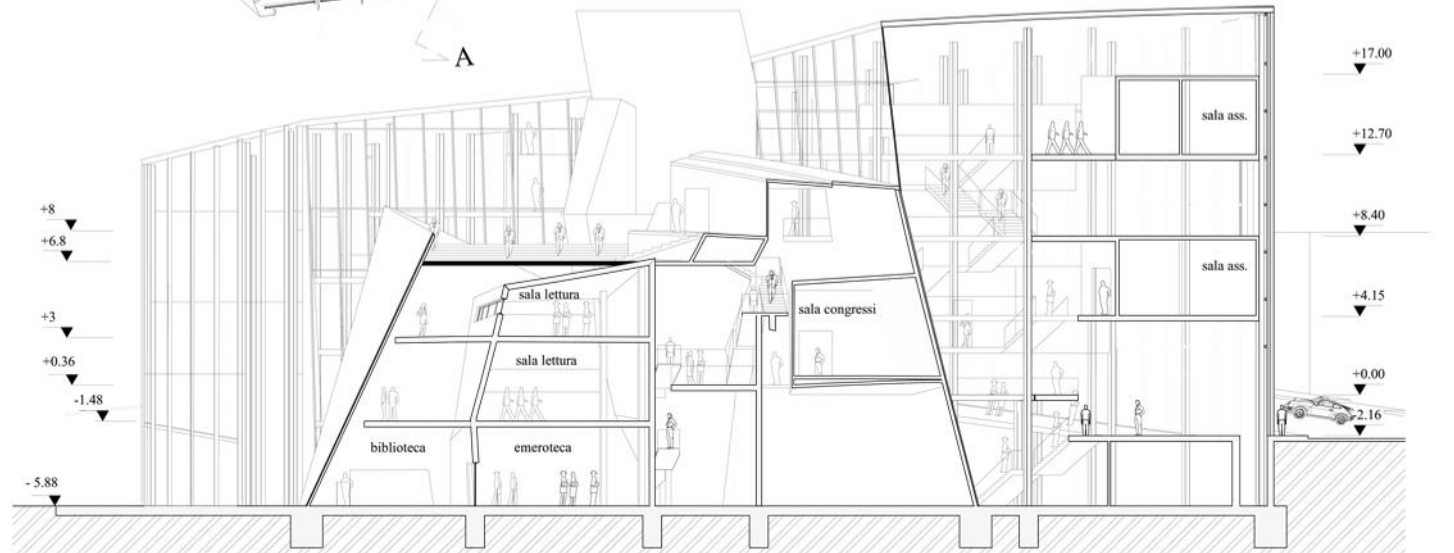
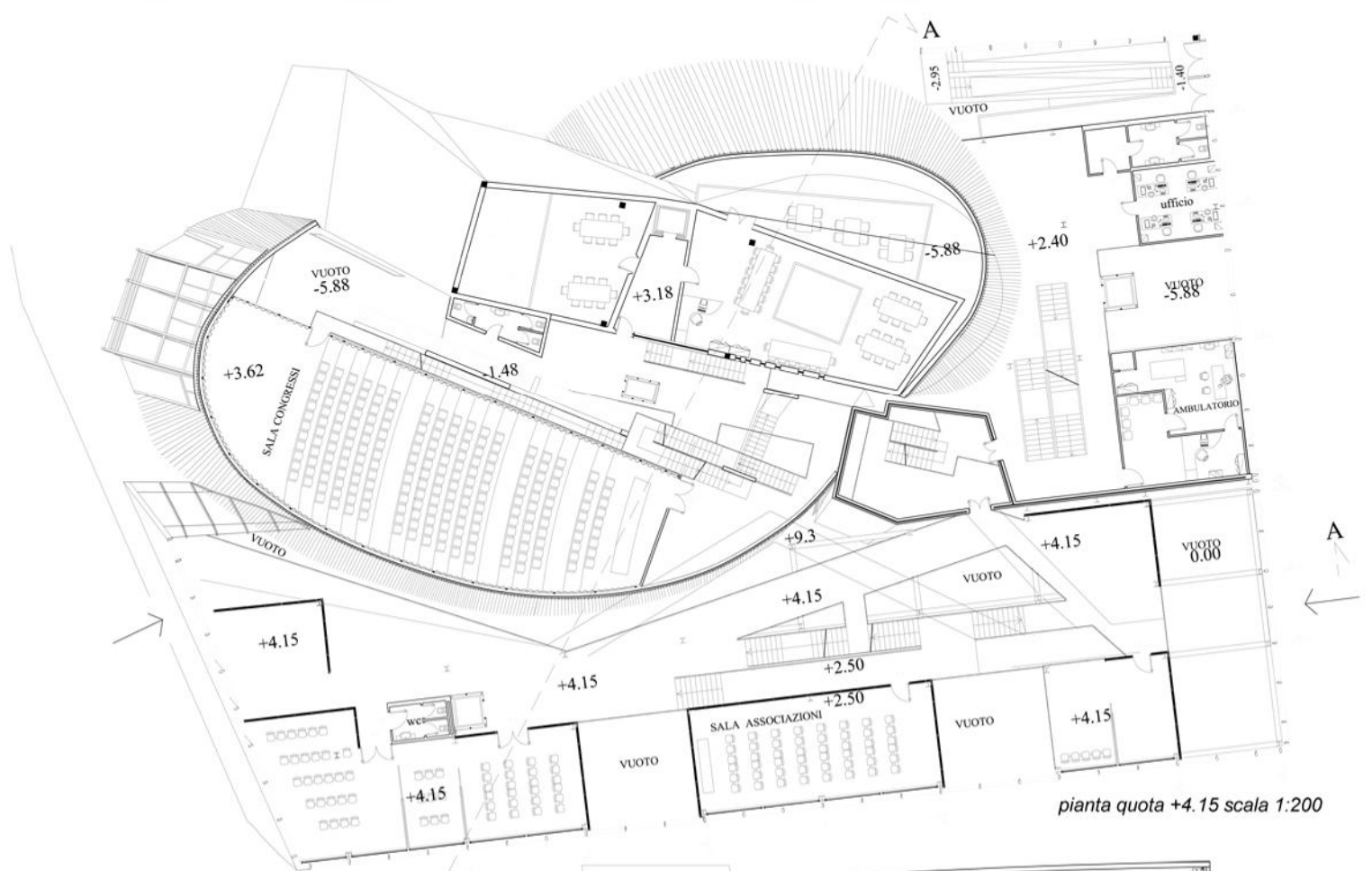
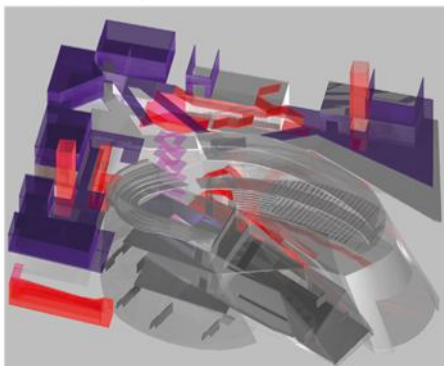
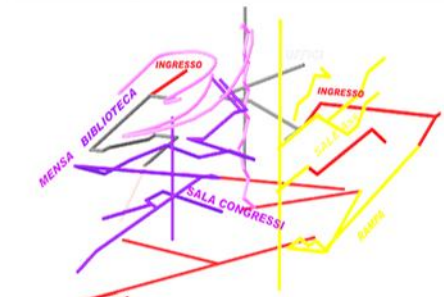
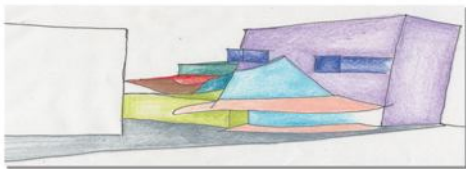
Sezione\_B-B scala 1:200



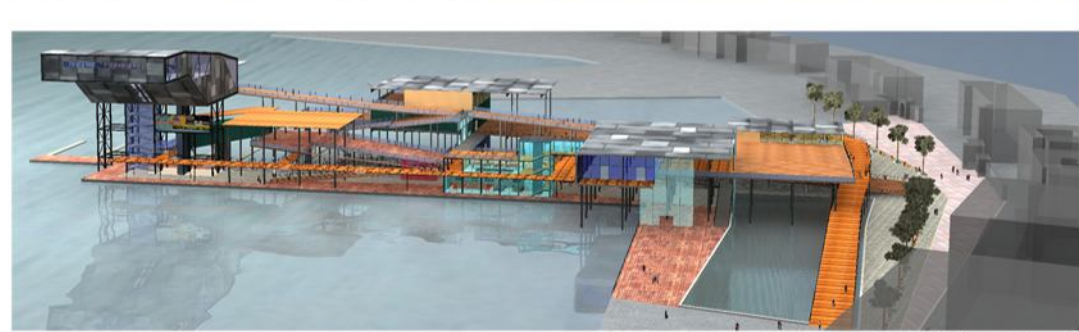
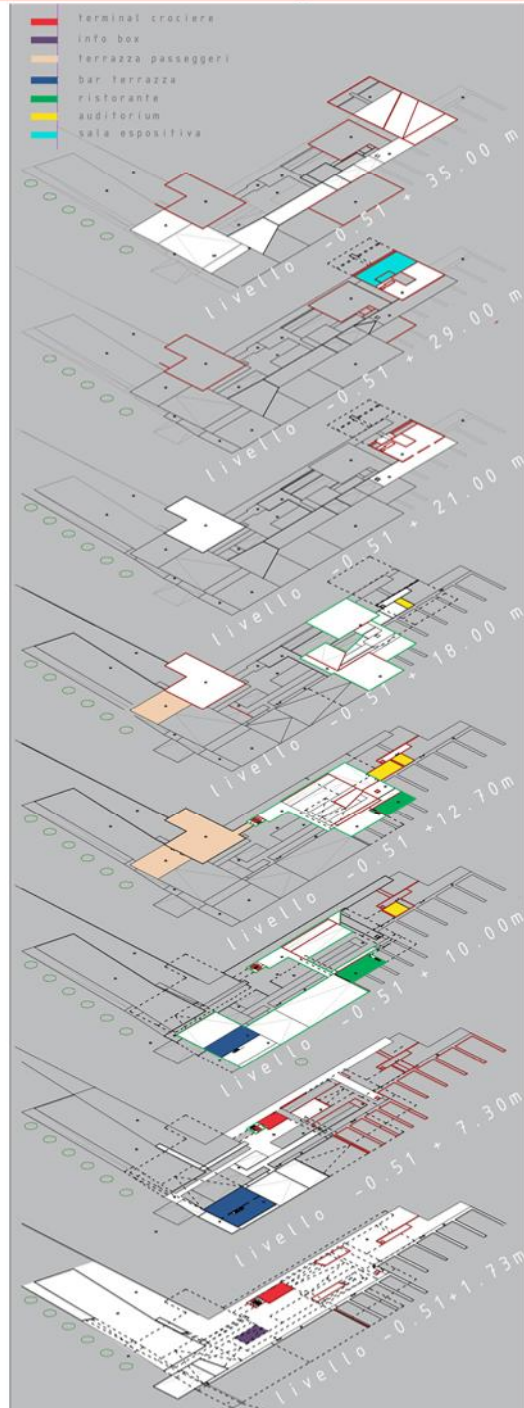
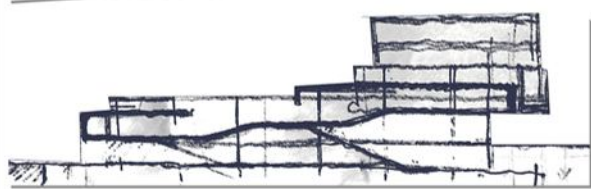
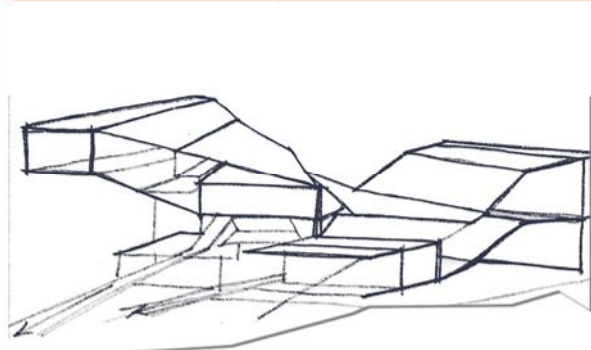
Sezione\_C-C scala 1:200

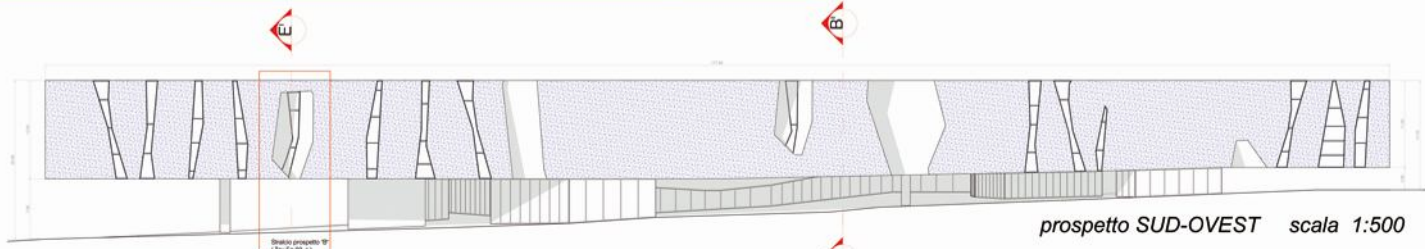


Corso di Architettura e Composizione Architettonica 2 - Titolare del corso Prof.Ing. Mario De Grassi - Progettazione di un centro civico in località Palombare ANCONA

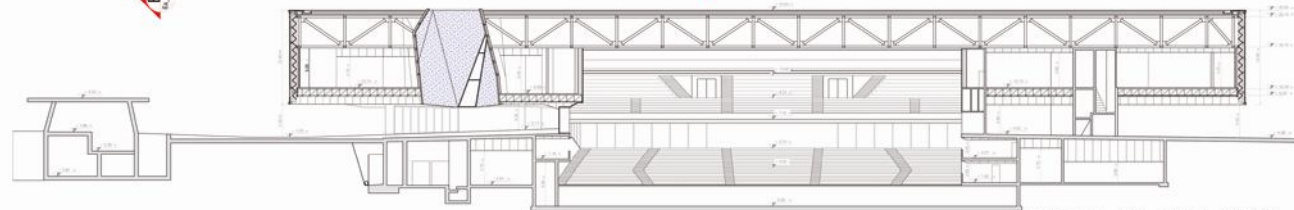


Corso di Architettura e Composizione Architettonica 3 - Titolare del corso Prof.Arch. Fausto Pugnali Un nuovo WATERFRONT per il porto di Ancona

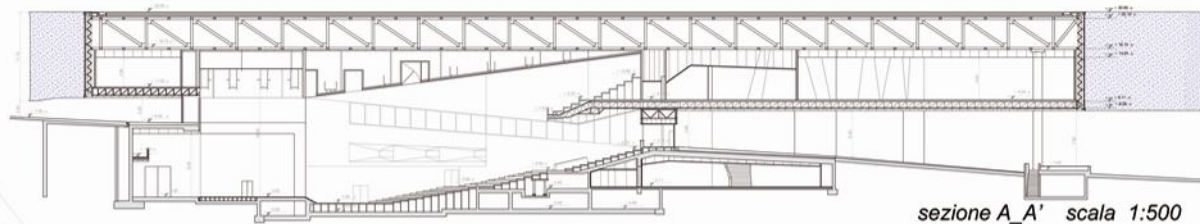




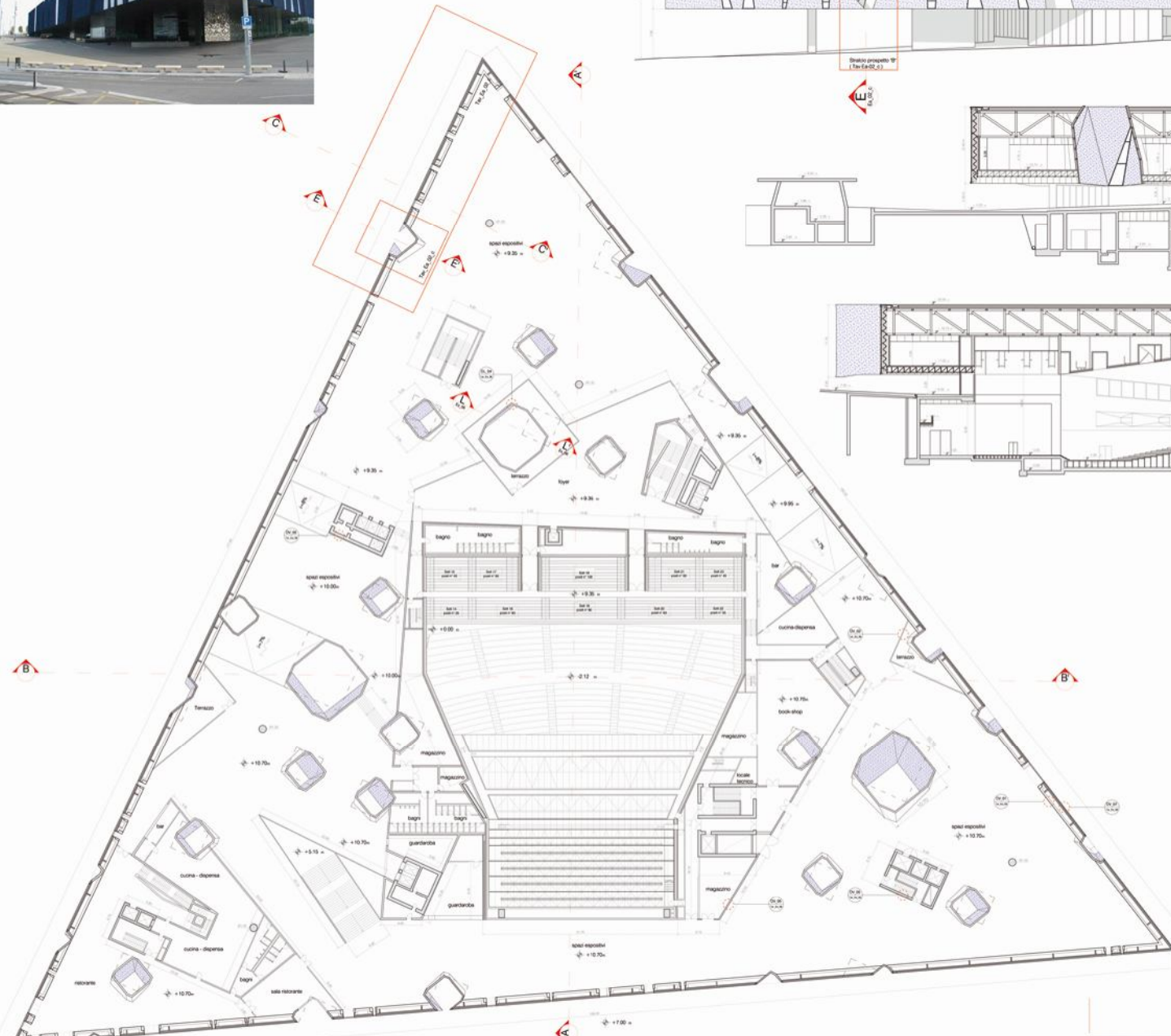
prospetto SUD-OVEST scala 1:500



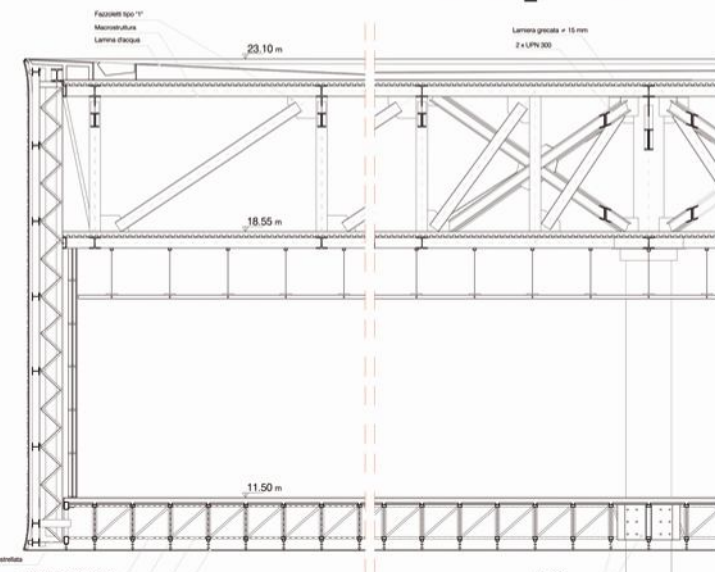
sezione B\_B' scala 1:500



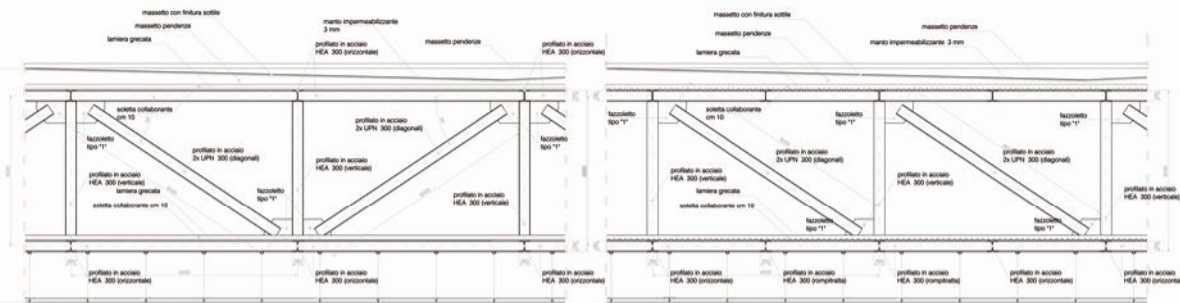
sezione A\_A' scala 1:500



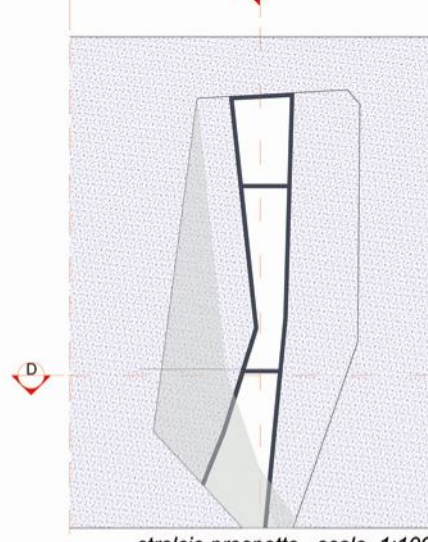
pianta livello espositivo (quota + 11.00 m) scala 1:500



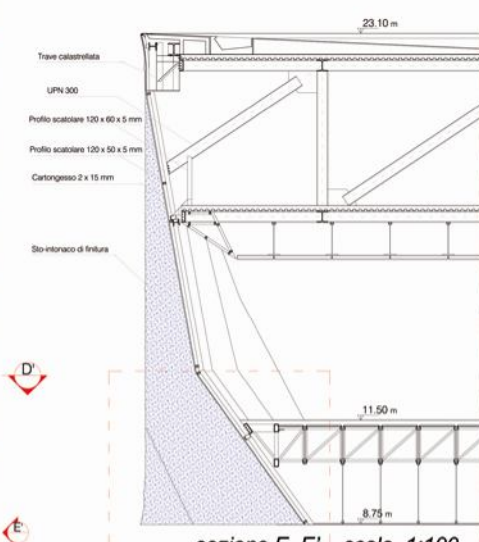
stralcio sezione C\_C' scala 1:100



esecutivo MACROSTRUTTURA scala 1:100



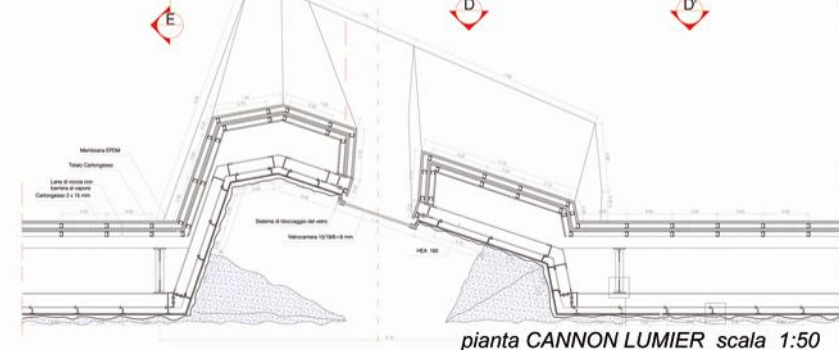
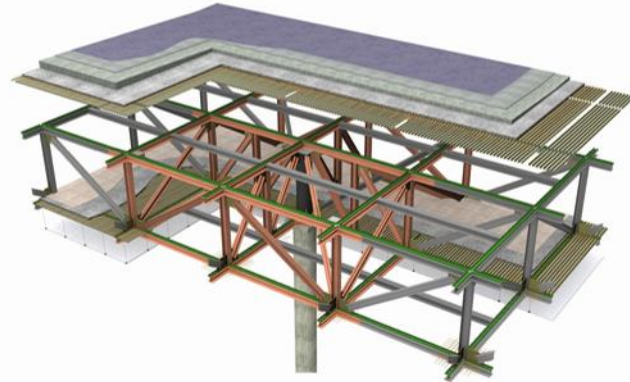
stralcio prospetto scala 1:100



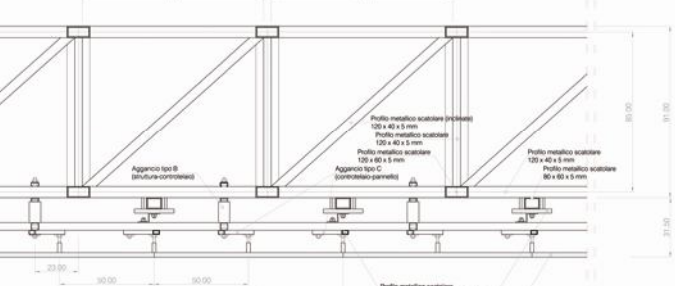
sezione E\_E' scala 1:100



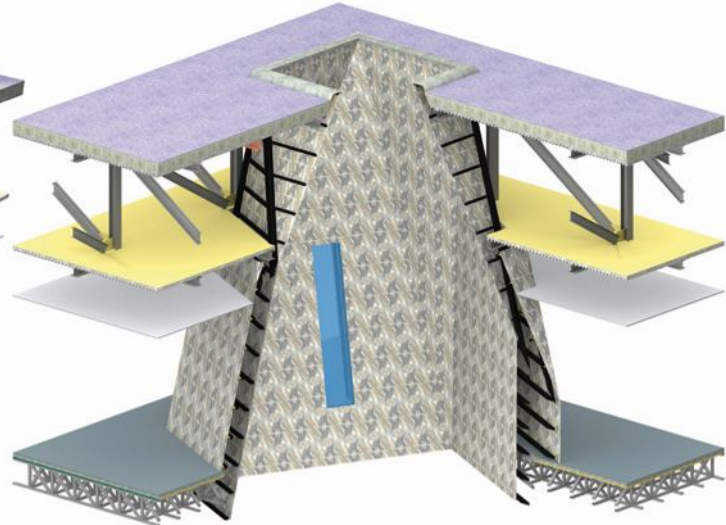
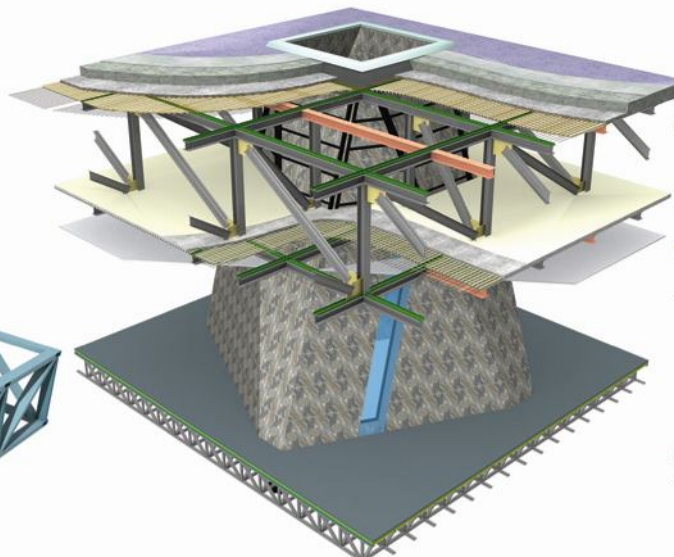
modello tridimensionale MACROSTRUTTURA



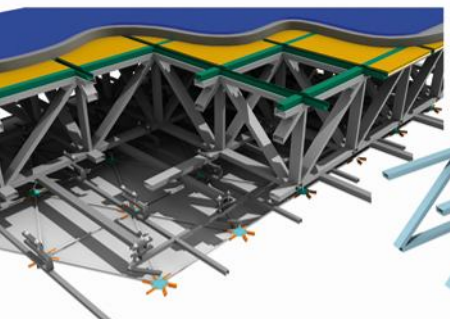
pianta CANNON LUMIER scala 1:50



esecutivo MICROSTRUTTURA scala 1:50



modello tridimensionale CANNON LUMIER



modello tridimensionale MICROSTRUTTURA