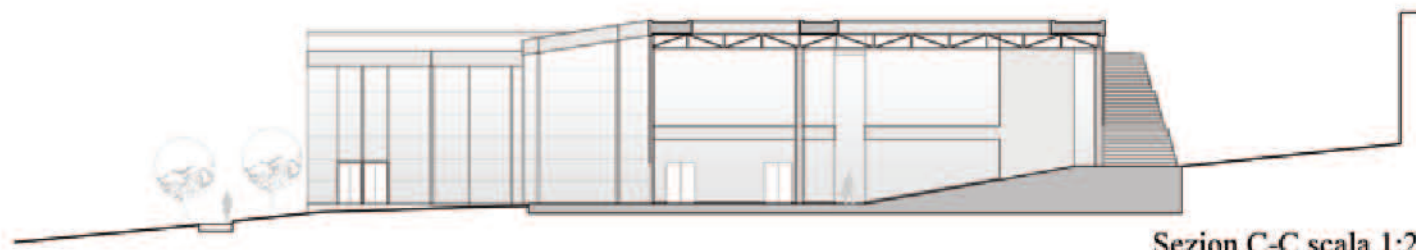
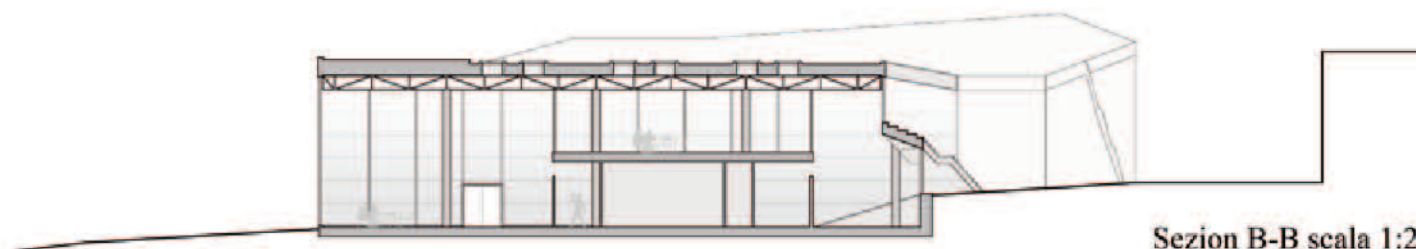


Pianta piano primo scala 1:200



Sezion C-C scala 1:200



Sezion B-B scala 1:200

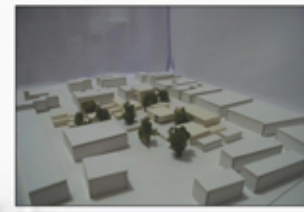


Sezion A-A scala 1:200

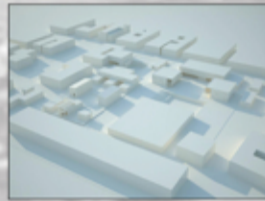
Idea progettuale



- Settore Amministrativo
- Settore commerciale
- Settore arte e musica
- Settore culturale



I percorsi evidenziati sono tutti a traffico limitato



Sezione D-D

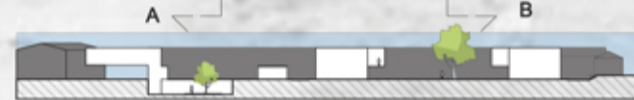


Sezione A-A

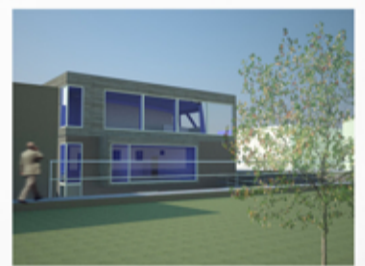
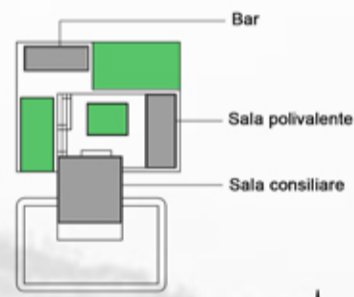
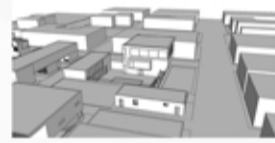


Sezione B-B

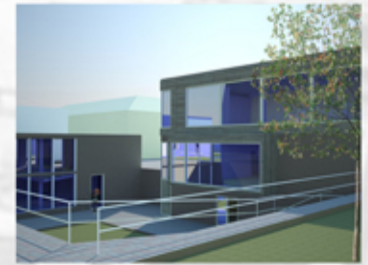
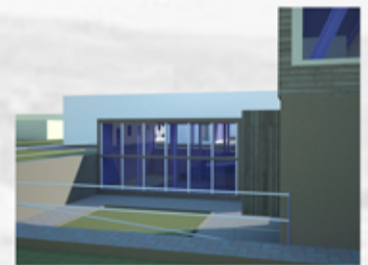
Scala 1:500



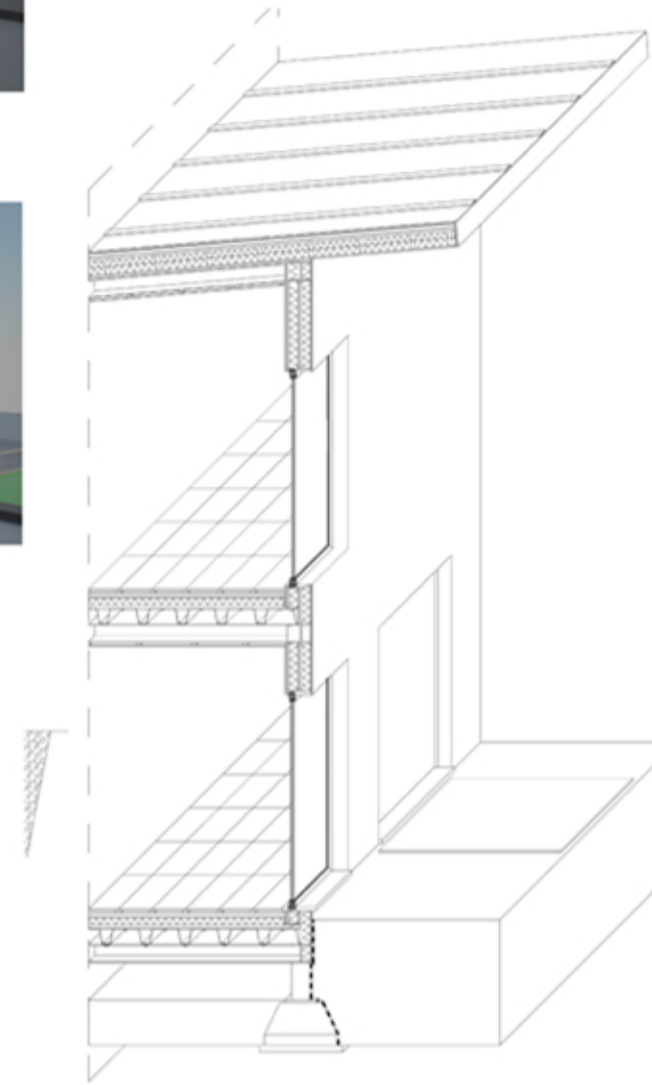
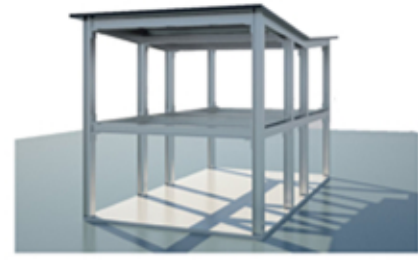
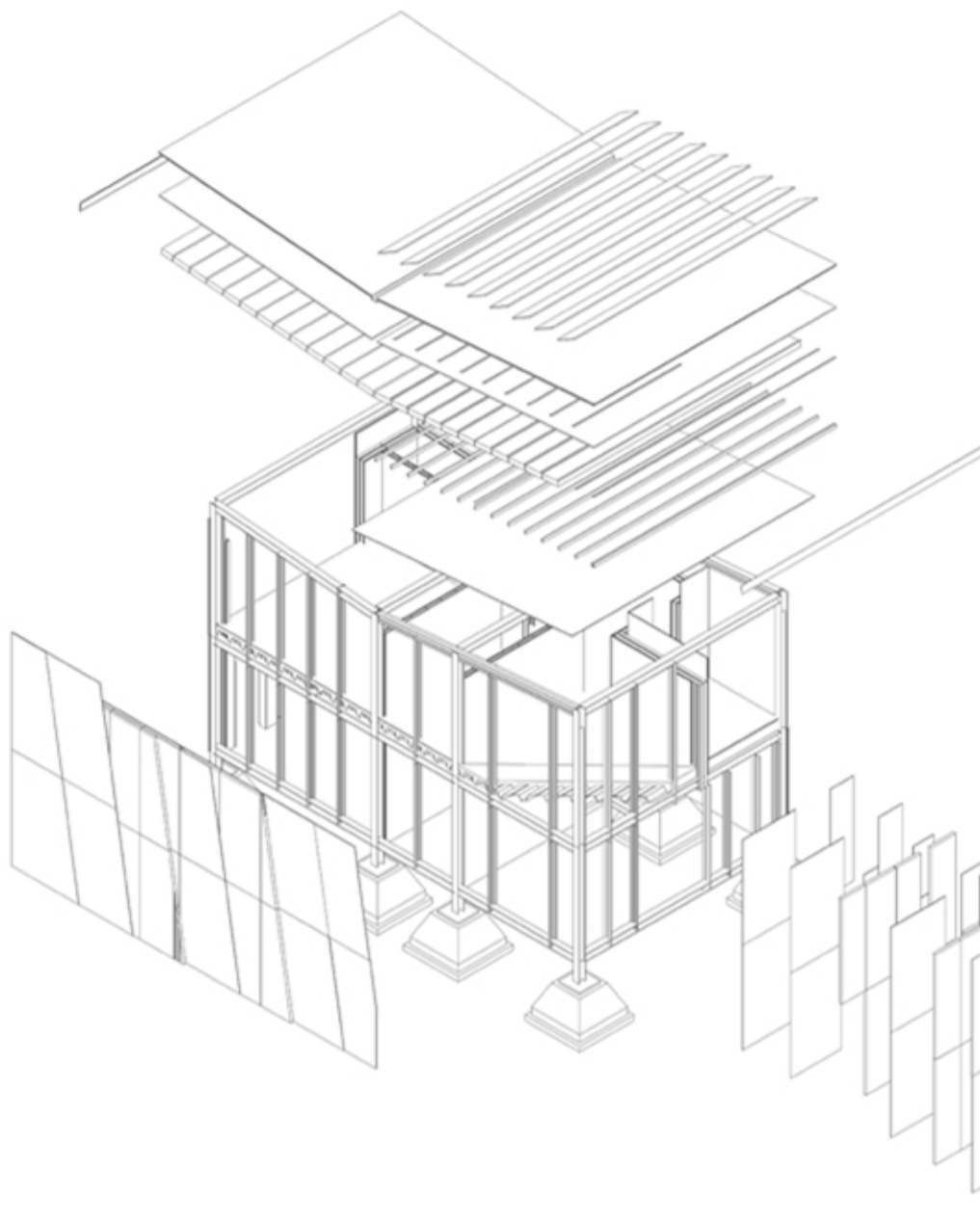
Sezione C-C



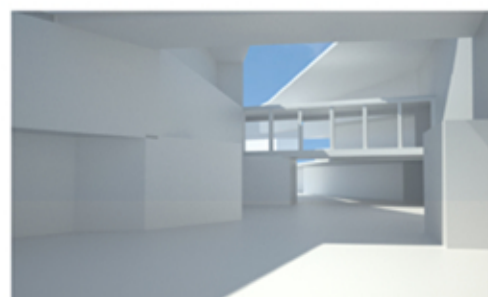
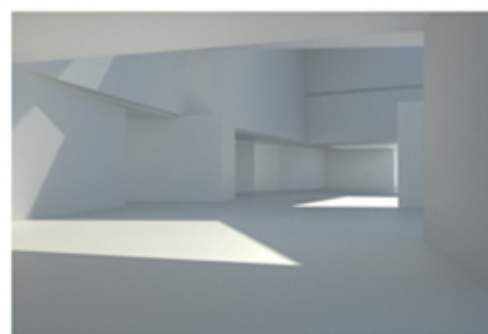
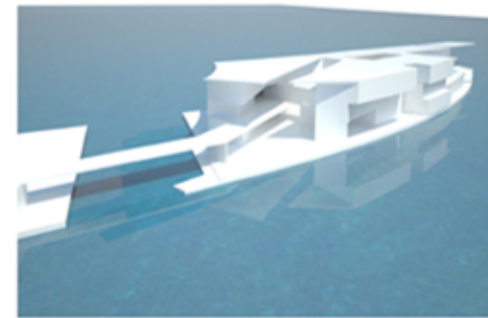
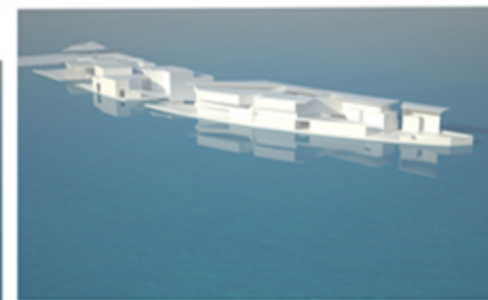
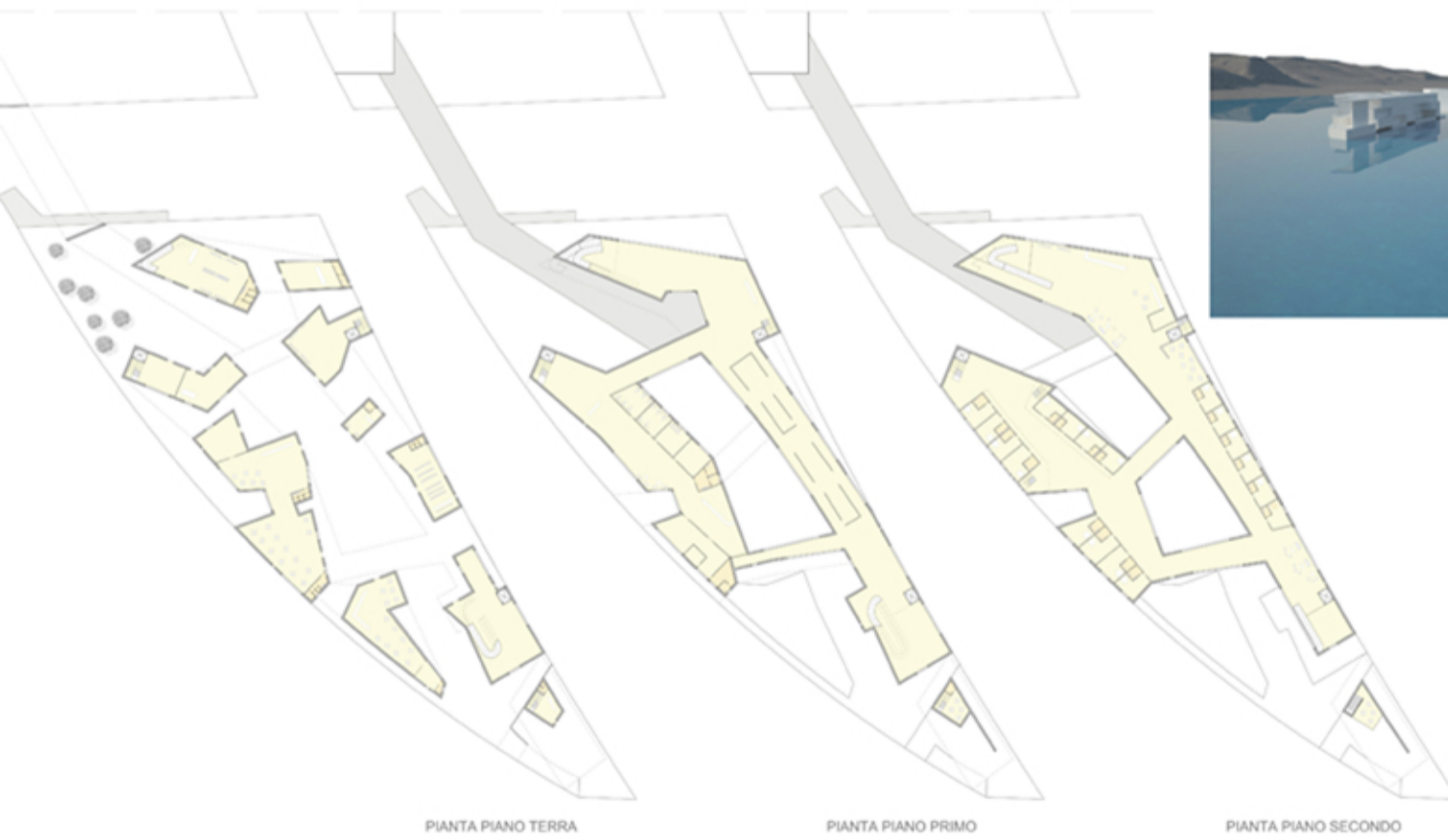
1:200

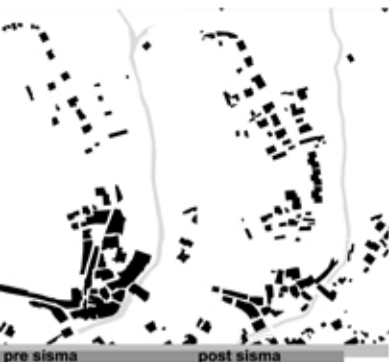


Laboratorio di costruzioni dell'architettura Prof.: Sonia Calvelli



Laboratorio progettazione dell'architettura Prof.: Marco D'annuntis





mobilità e accessi

- viabilità
- percorso pedonale
- direzioni di percorrenza
- accessi ai parcheggi
- accesso al borgo



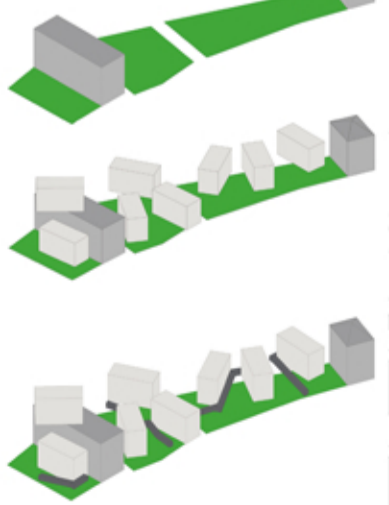
analisi dell'edificato

- edificato di vecchia costruzione (privati)
- edificato di nuova costruzione (privati)
- edifici storici (pubblici)

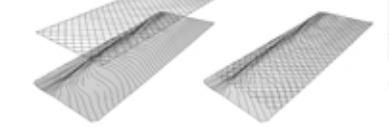


verde pubblico e privato

- privato
- pubblico

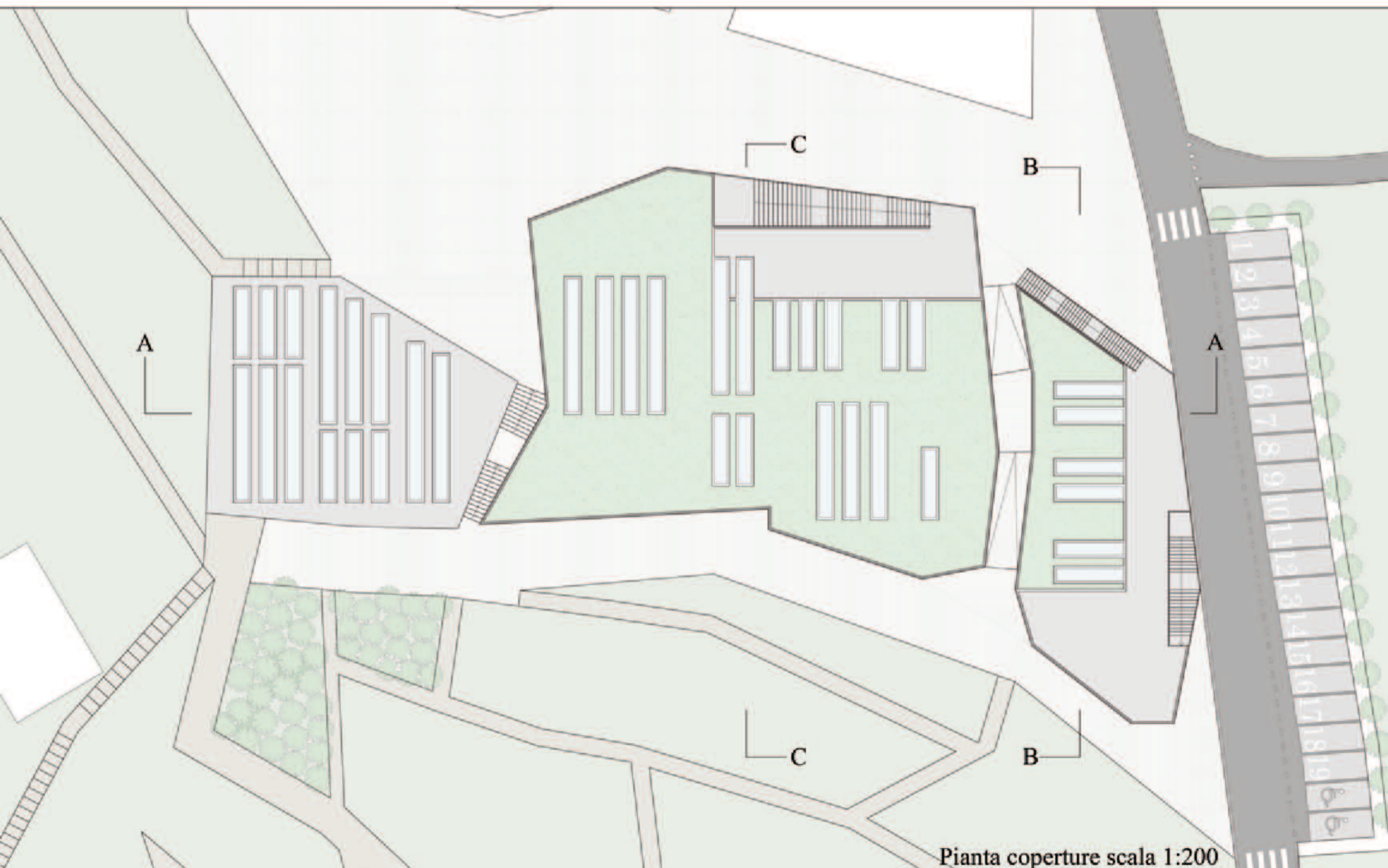
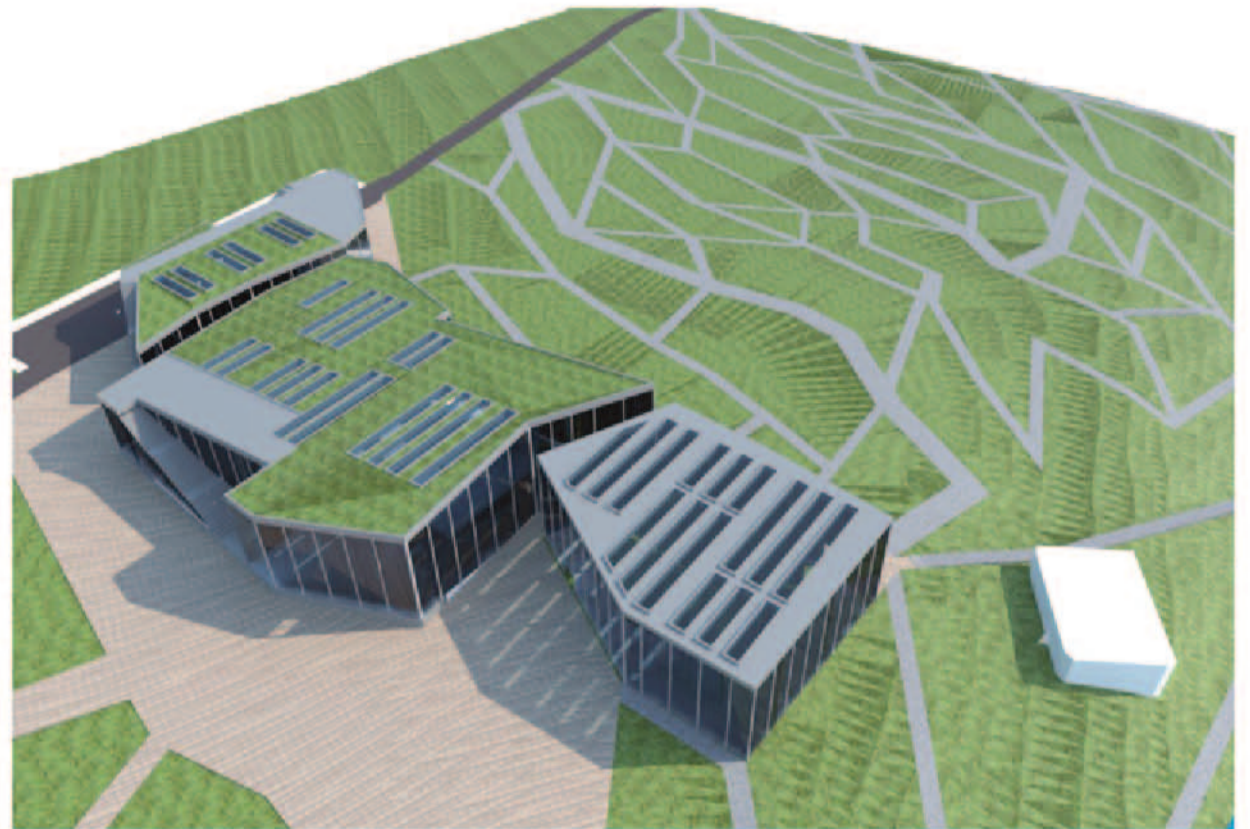
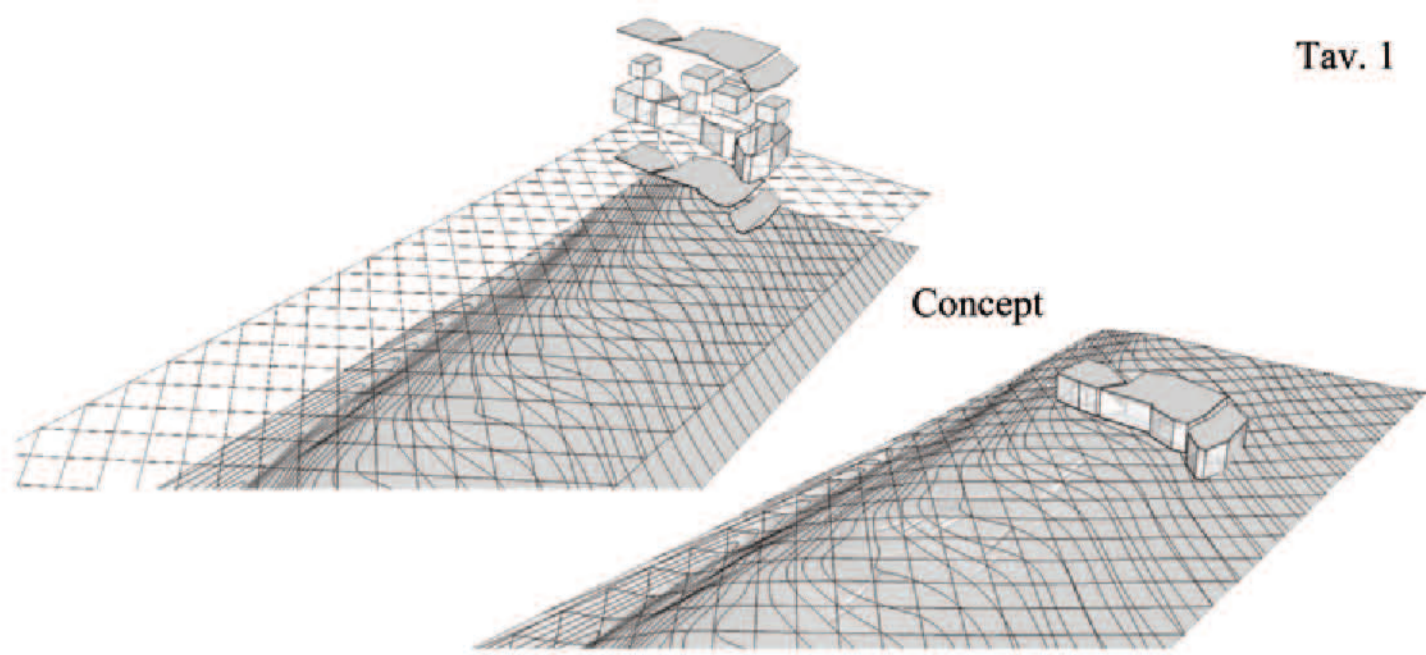


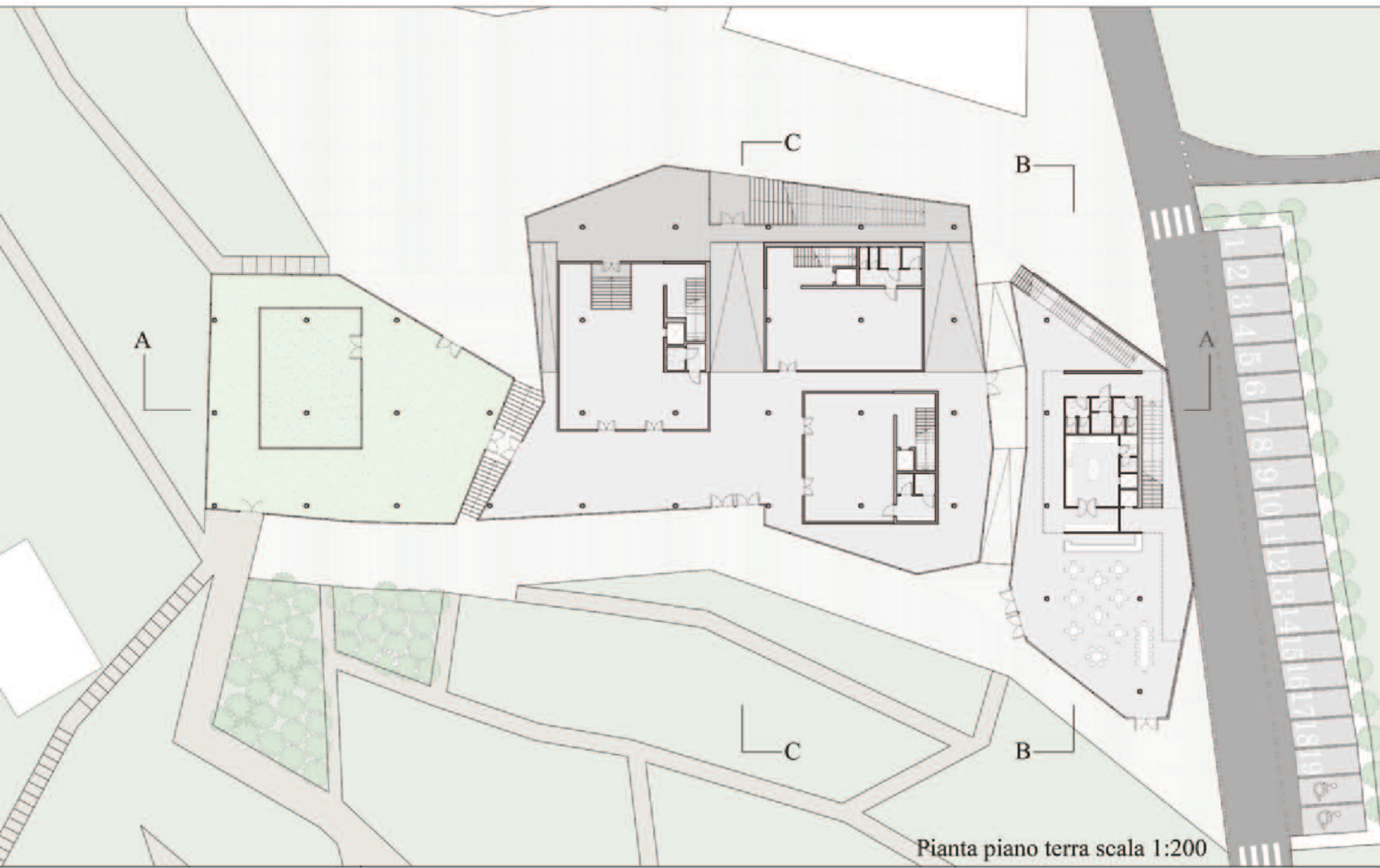
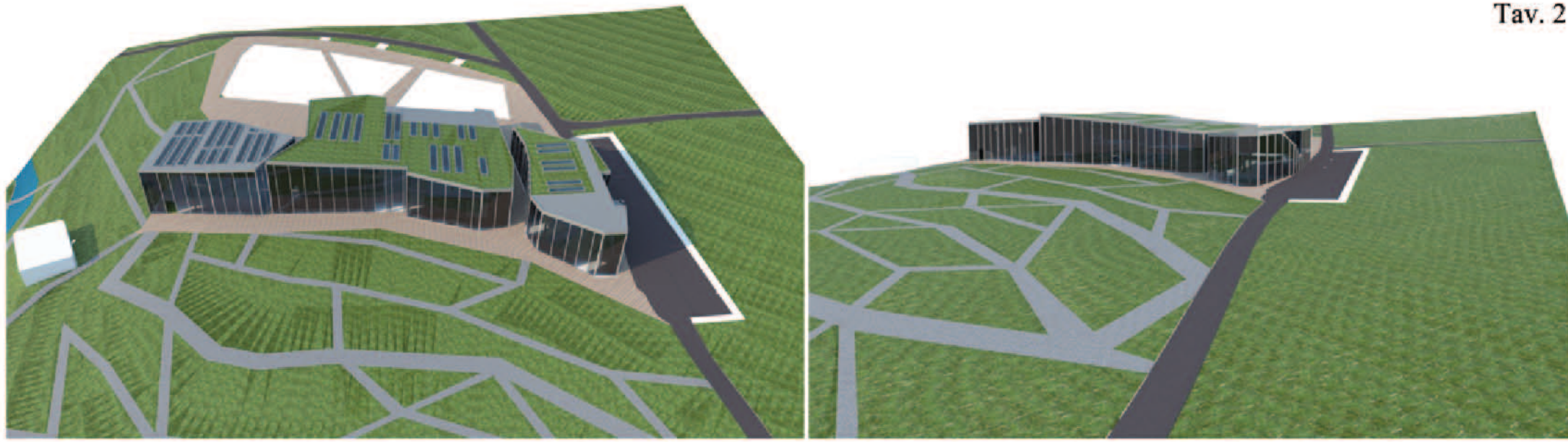
concept borgo



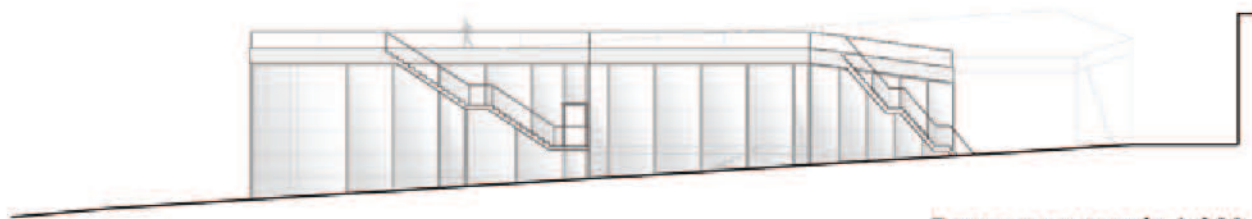
concept parco

masterplan 1 : 1000

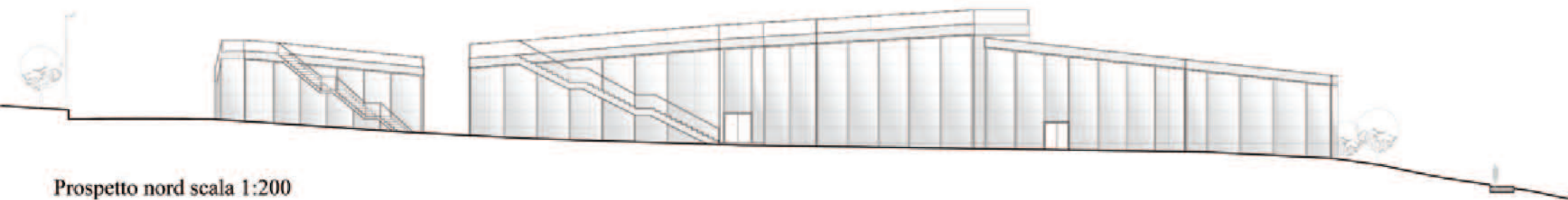




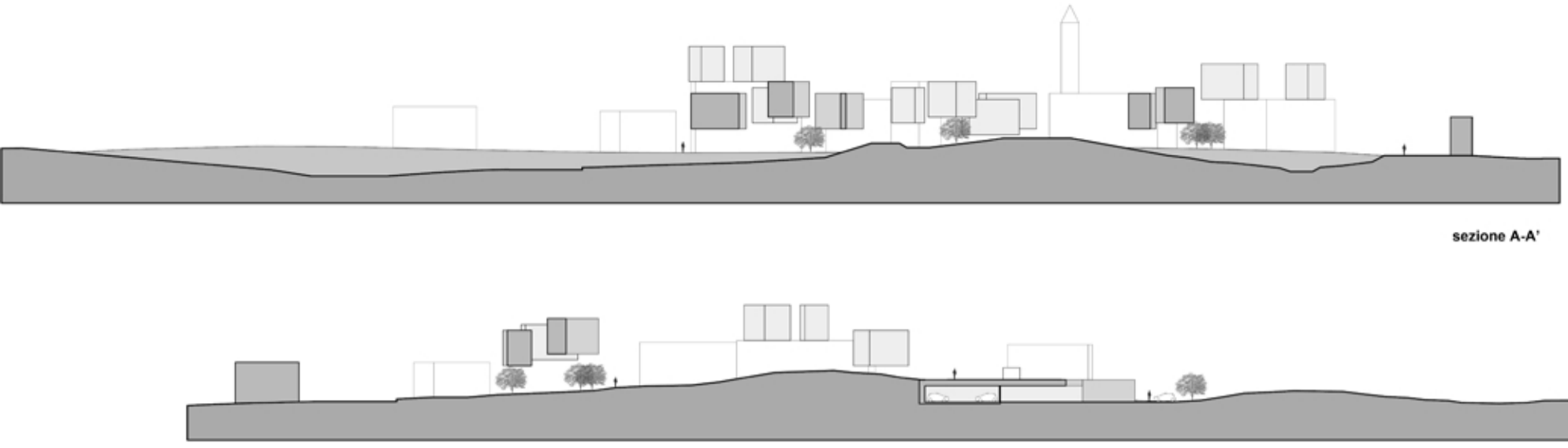
Pianta piano terra scala 1:200



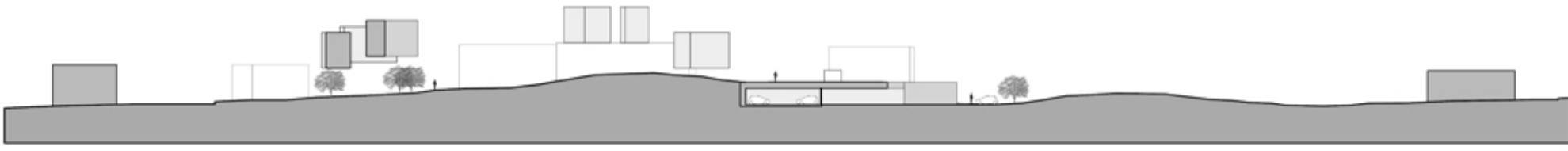
Prospetto est scala 1:200



Prospetto nord scala 1:200

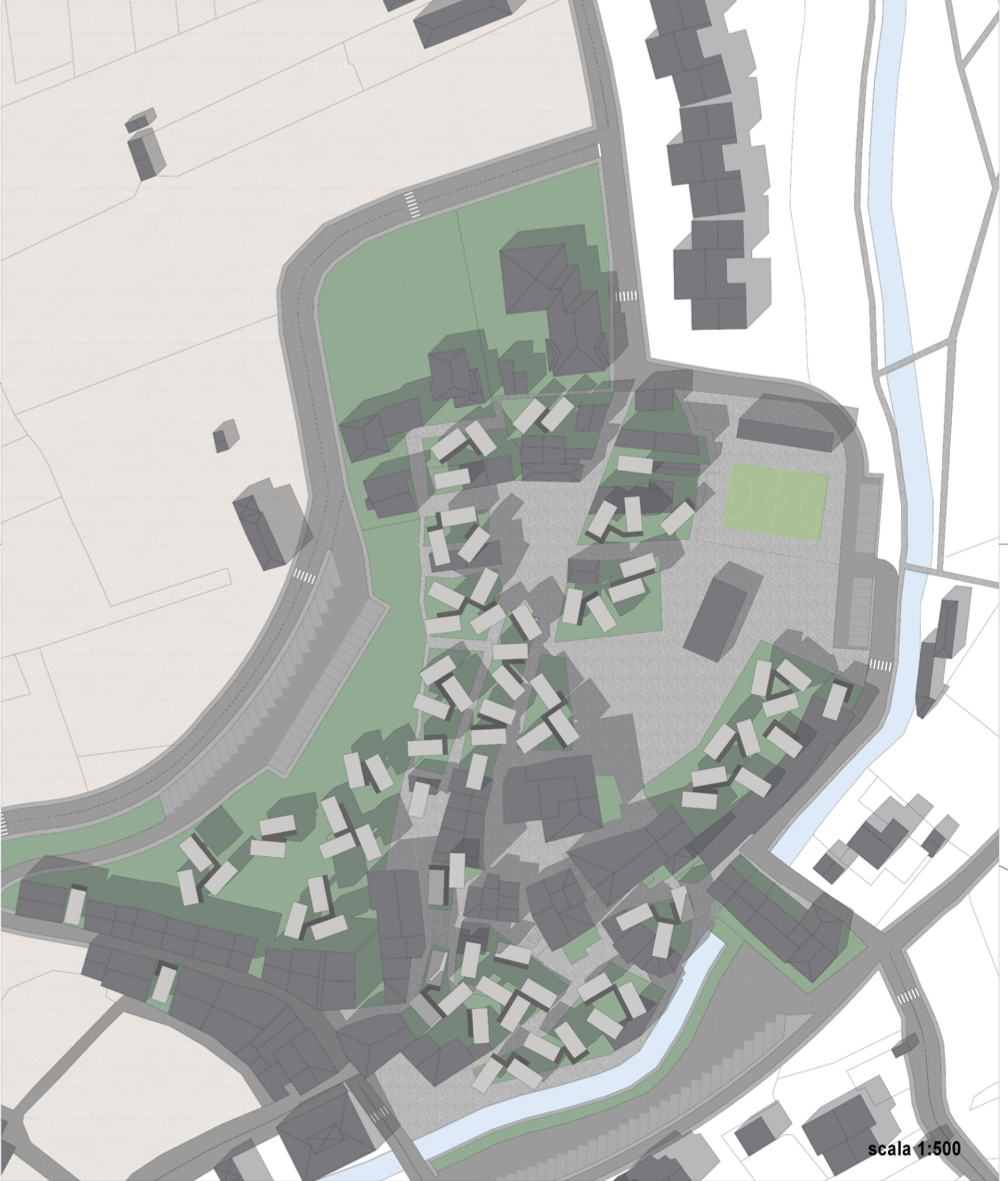


sezione A-A'



sezione B-B'

planivolumetrico centro storico



scala 1:500