

**UNIVERSITA' DEGLI STUDI DI CAMERINO
FACOLTA' DI ARCHITETTURA ASCOLI PICENO**

Tesi di laurea in

Progettazione dell'architettura

Nuovi spazi per il turismo:

terminal-ristorante a Stari Grad

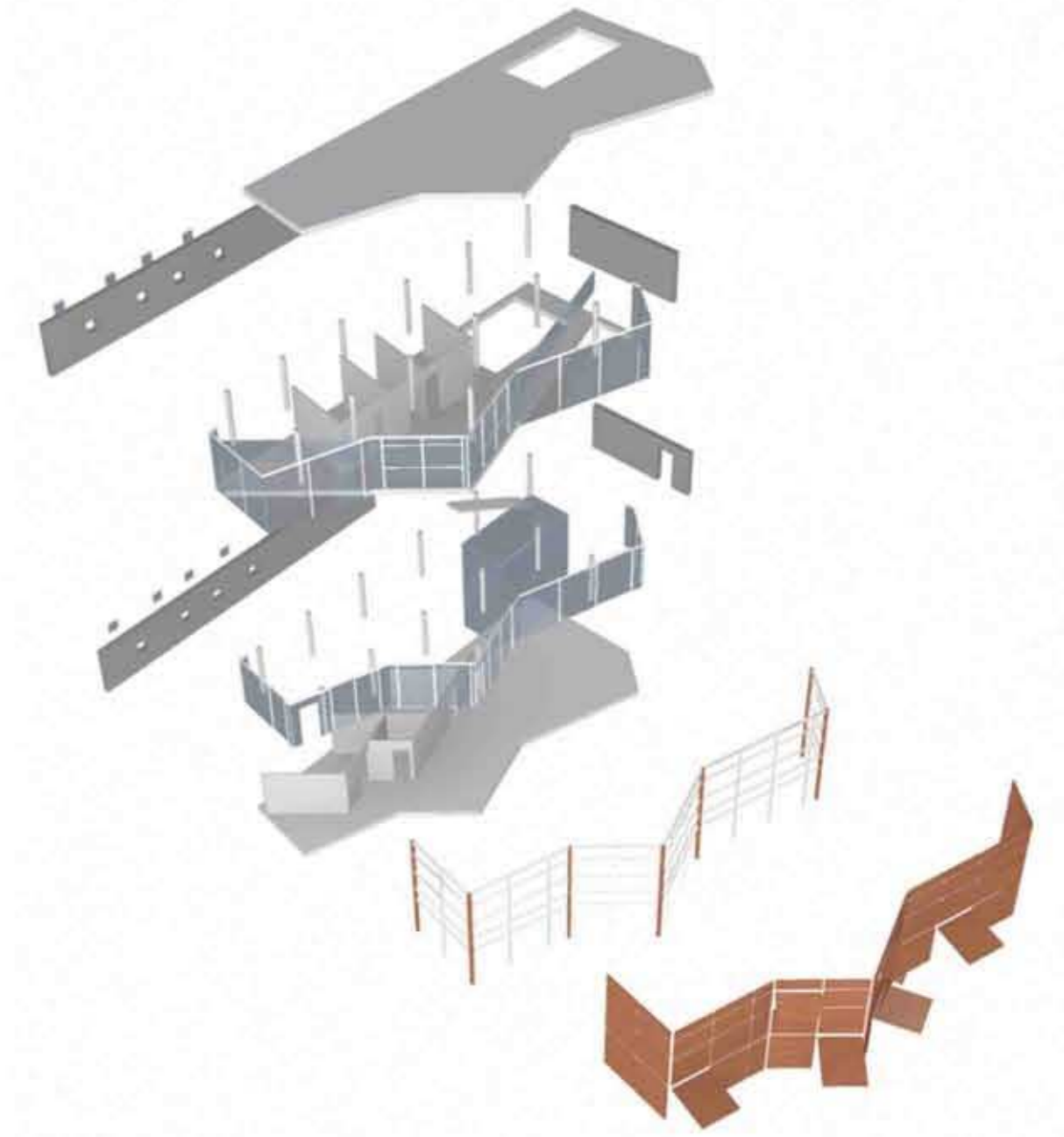
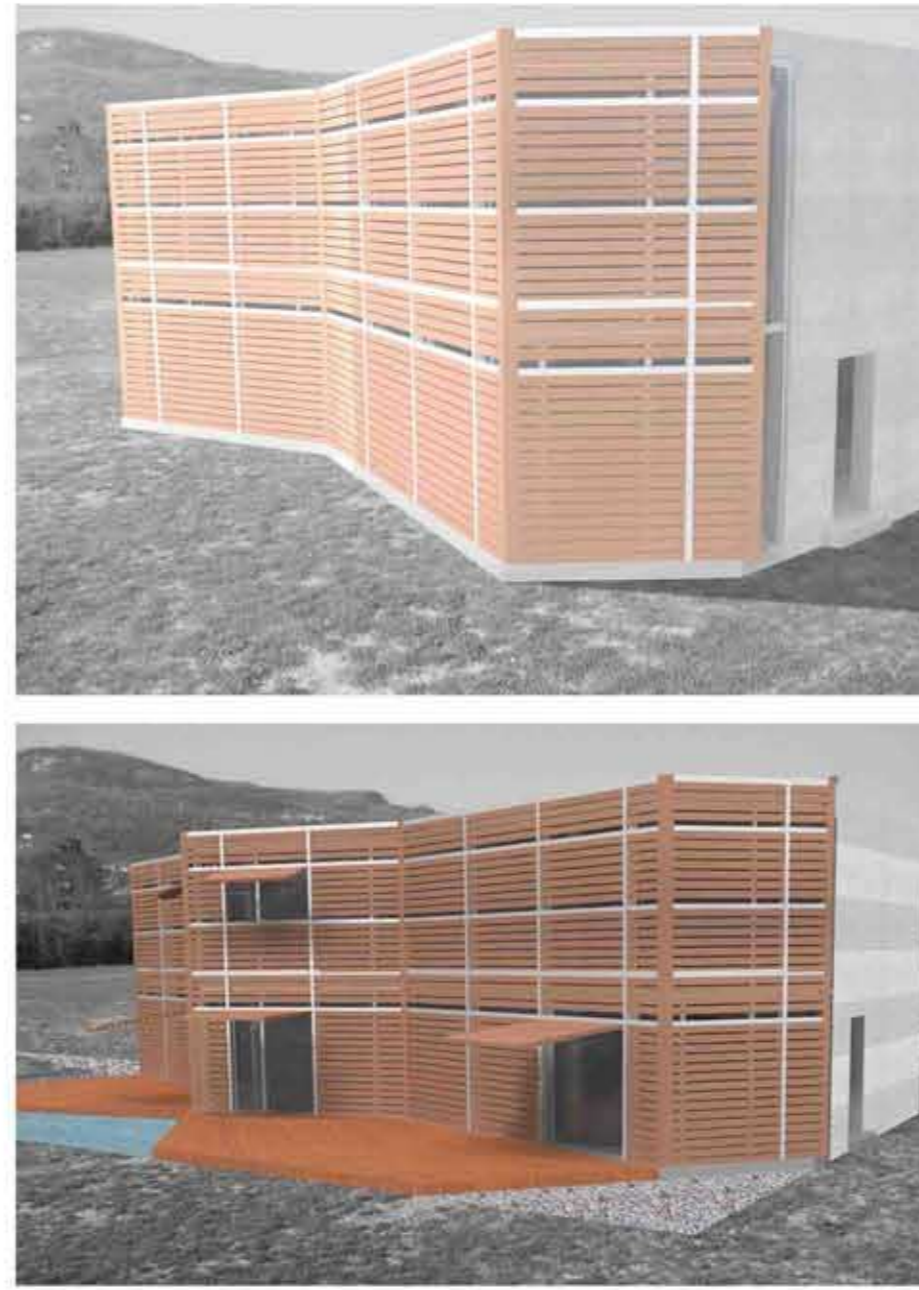
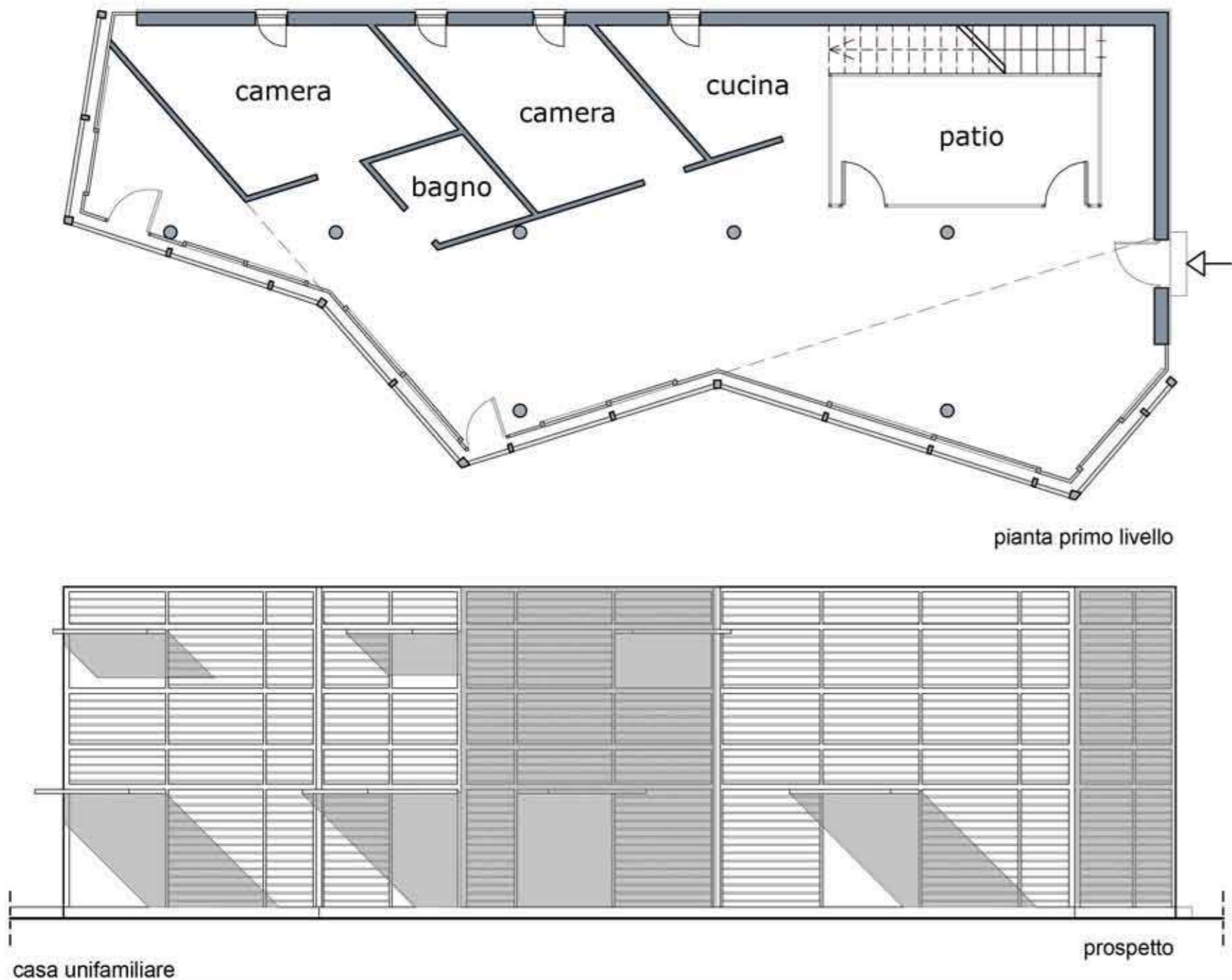
Laureando

Stefano Fanini

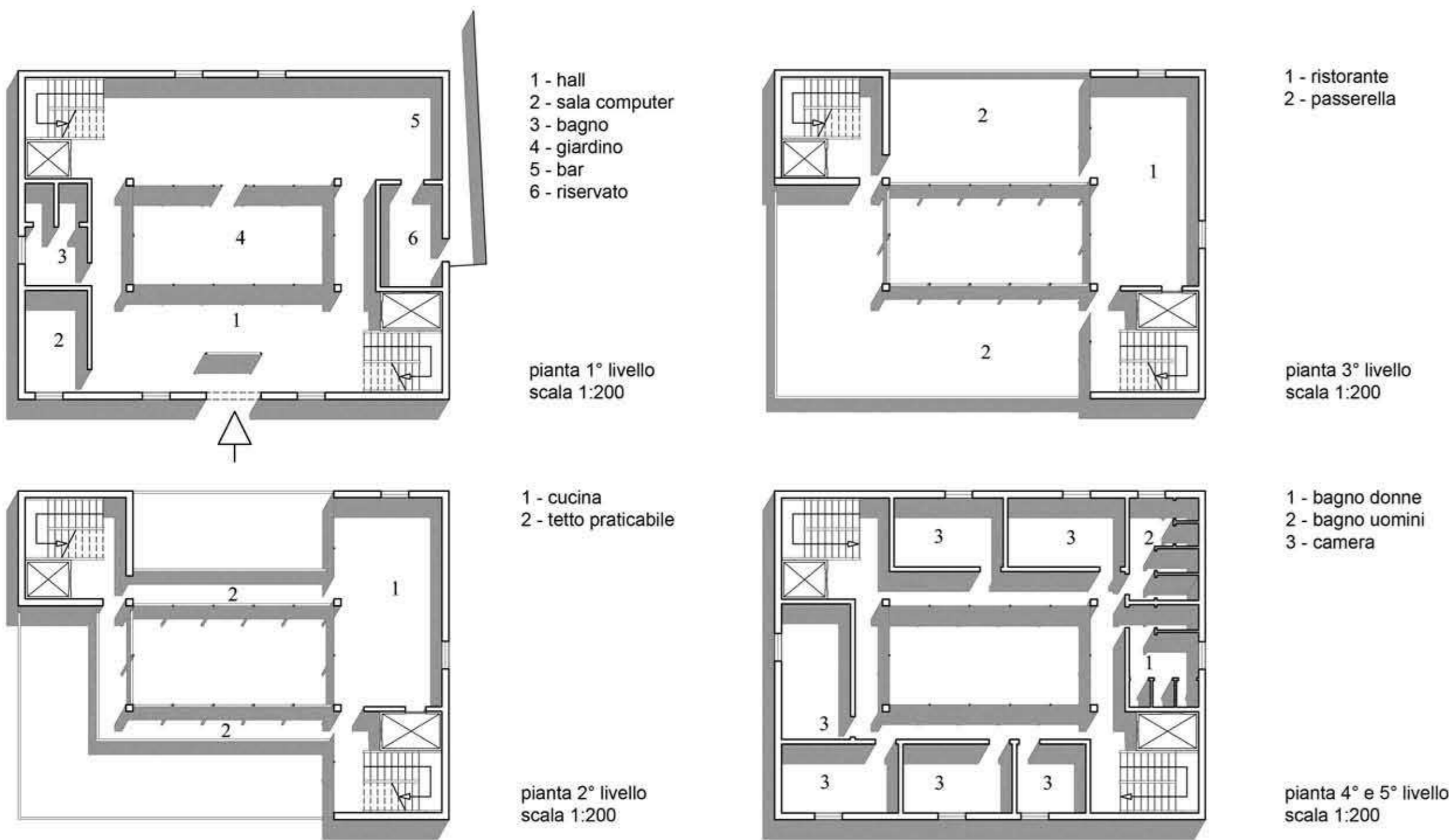
Relatore

Luigi Coccia

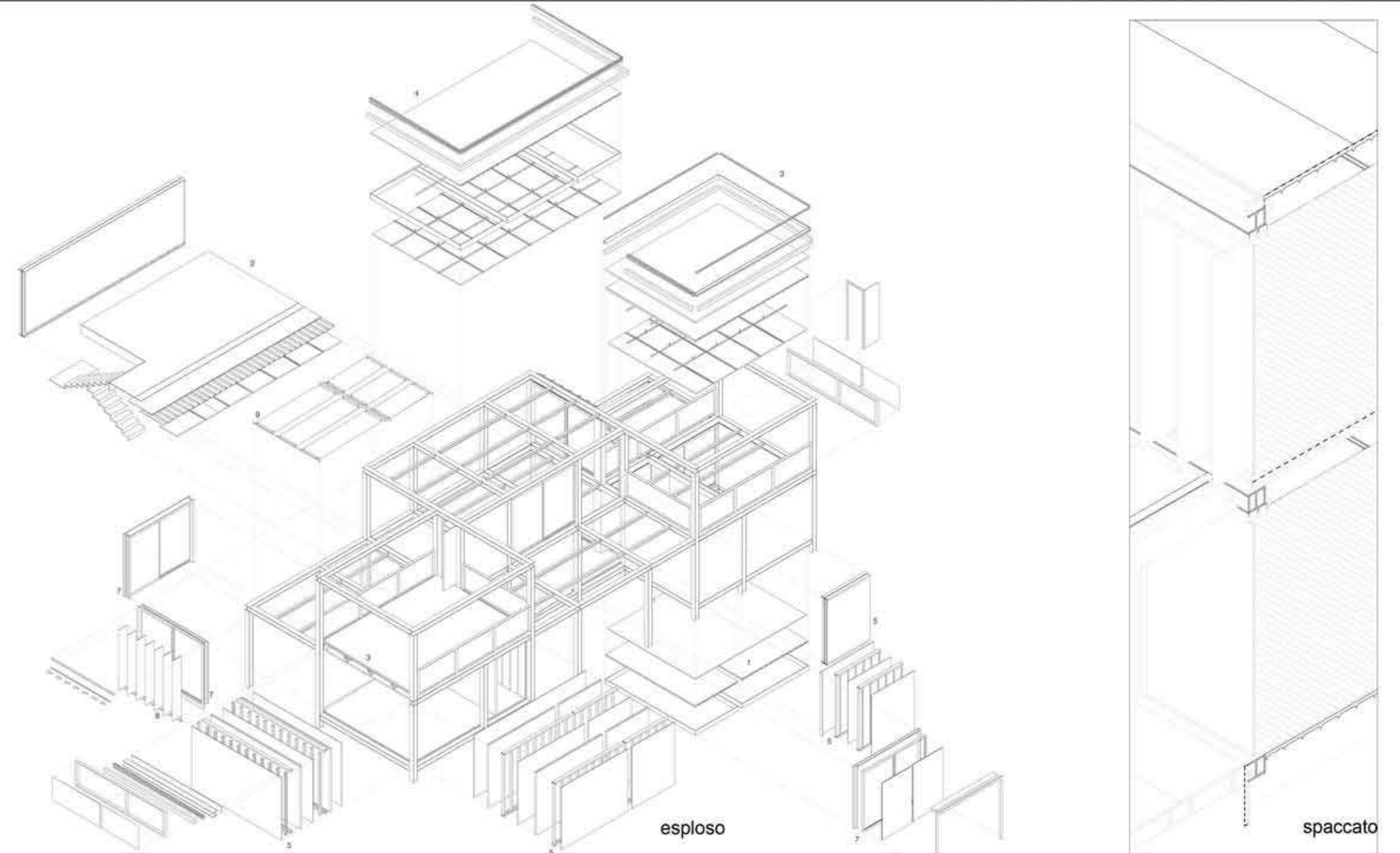
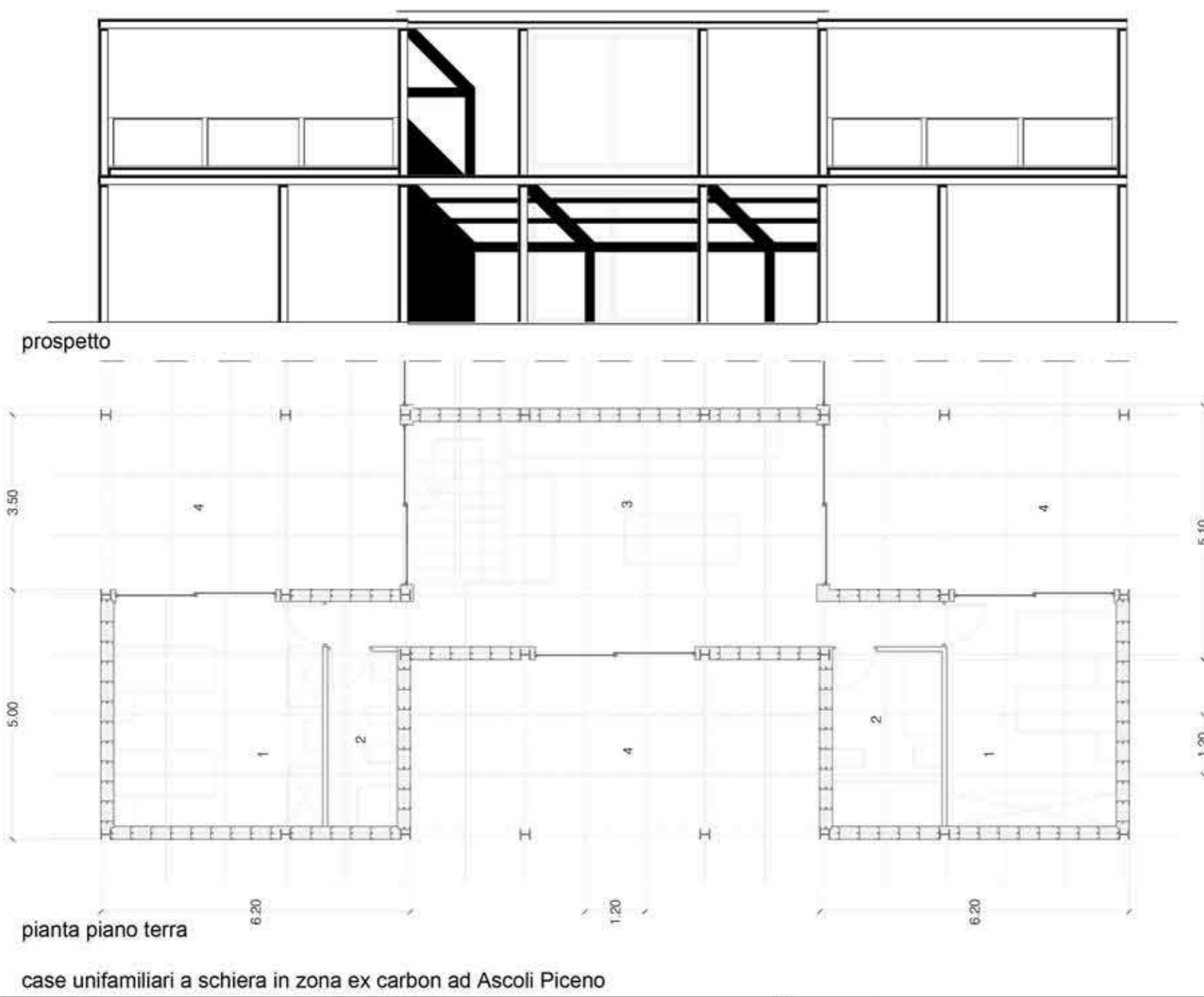
A.A. 2008/2009



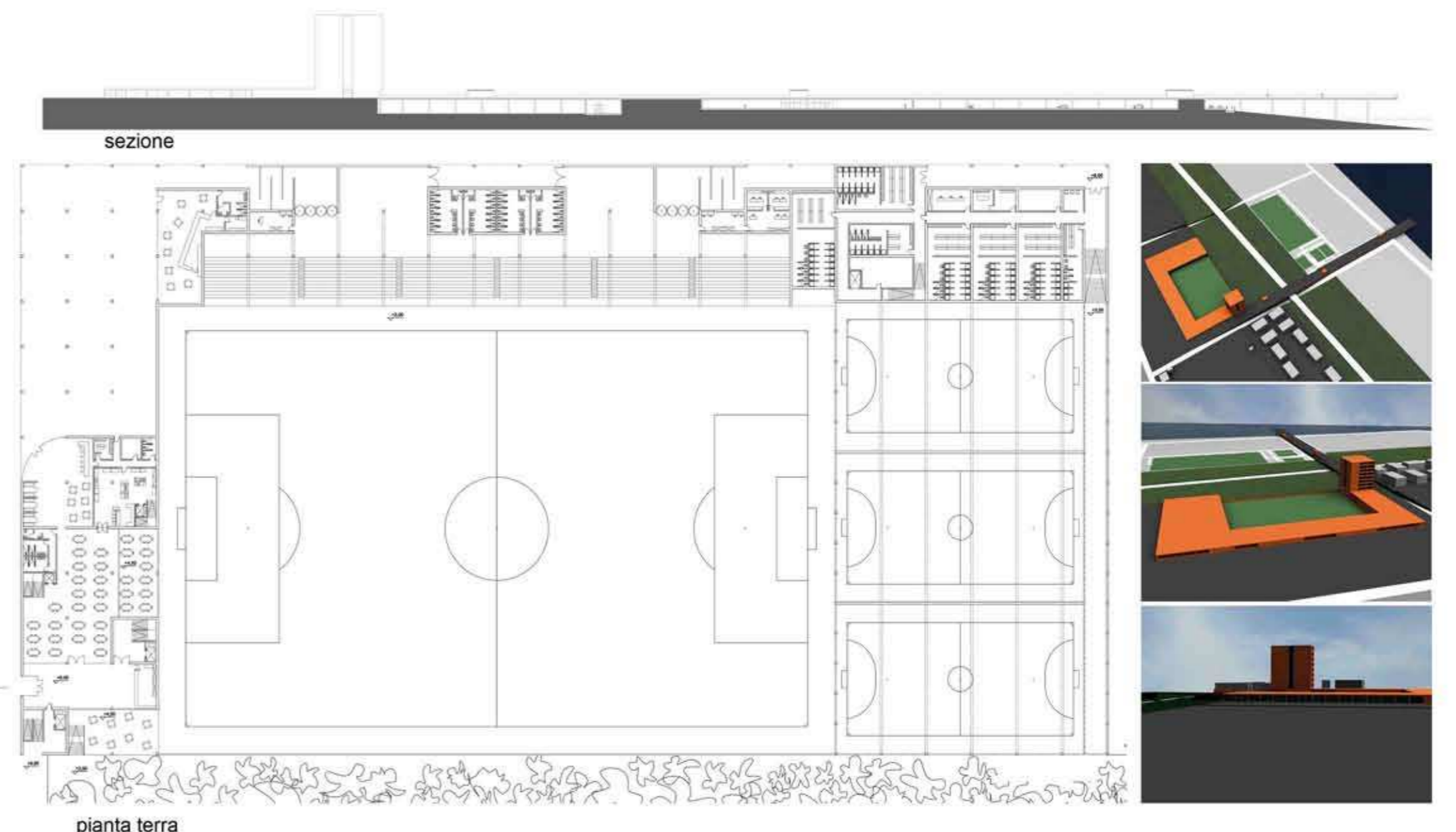
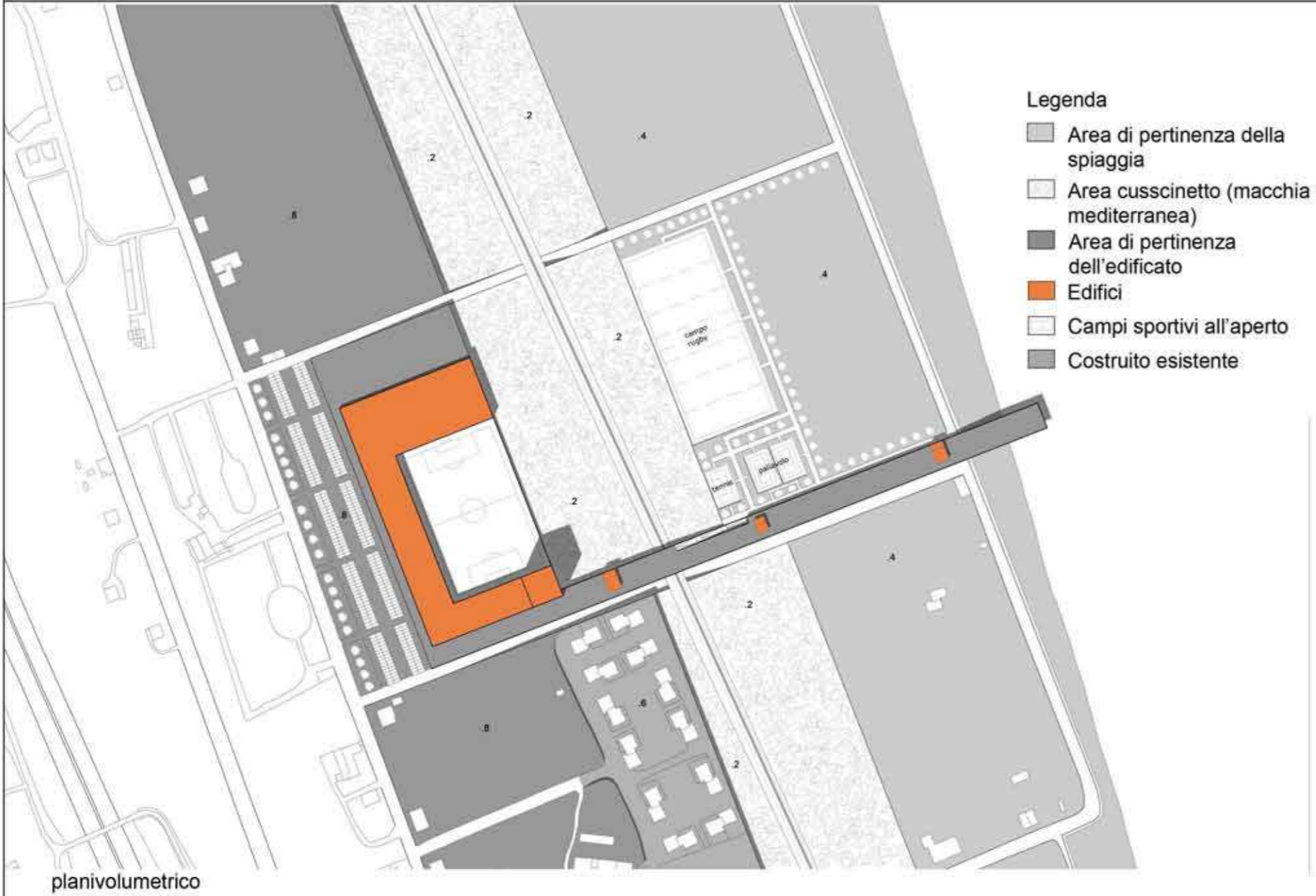
laboratorio di fondamenti della progettazione_Prof.ssa Anna Rita Emili, Prof.ssa Sonia Calvelli



laboratorio di progettazione urbana_Prof. Agostini



laboratorio di costruzioni dell'architettura_prof. Sonia Calvelli



laboratorio di progettazione dell'architettura_Prof. Luigi Coccia

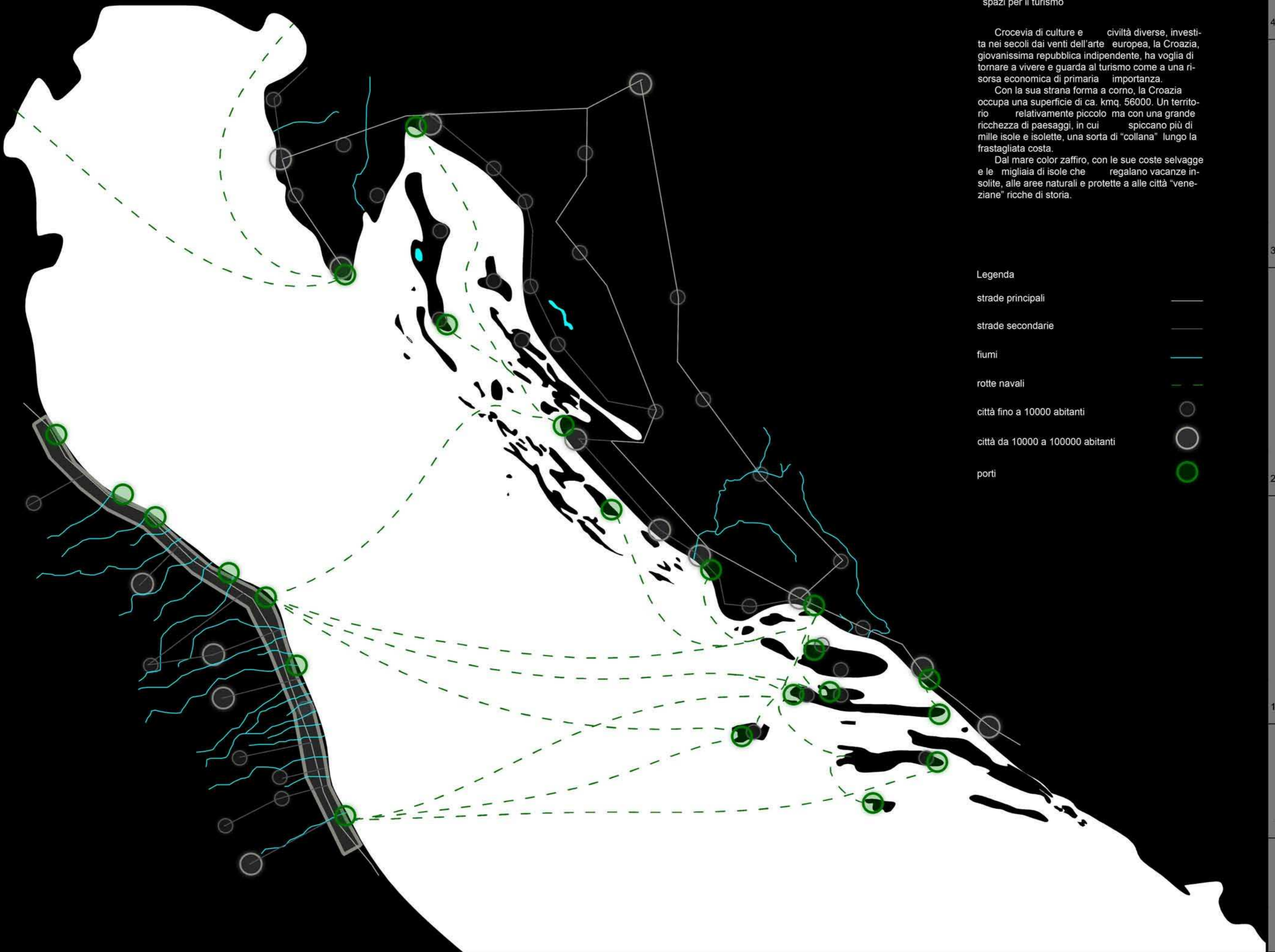


A14 SS 16 ferrovia lungomare mare adriatico A1 SS 56 E 65

paesaggio agrario costruito_residenze spiaggia mare naturalità insediamento mare insediamenti e infrastrutture naturalità

costa italiana

costa croata



ITALIA_CROAZIA

la città adriatica
spazi per il turismo

Crocevia di culture e civiltà diverse, investita nei secoli dai venti dell'arte europea, la Croazia, giovanissima repubblica indipendente, ha voglia di tornare a vivere e guarda al turismo come a una risorsa economica di primaria importanza.

Con la sua strana forma a corno, la Croazia occupa una superficie di ca. kmq. 56000. Un territorio relativamente piccolo ma con una grande ricchezza di paesaggi, in cui spiccano più di mille isole e isolette, una sorta di "collana" lungo la frastagliata costa.

Dal mare color zaffiro, con le sue coste selvagge e le migliaia di isole che regalano vacanze insolite, alle aree naturali e protette alle città "veneziane" ricche di storia.

Legenda

- strade principali ———
- strade secondarie - - - - -
- fiumi ———
- rotte navali - - - - -
- città fino a 10000 abitanti ○
- città da 10000 a 100000 abitanti ○
- porti ●

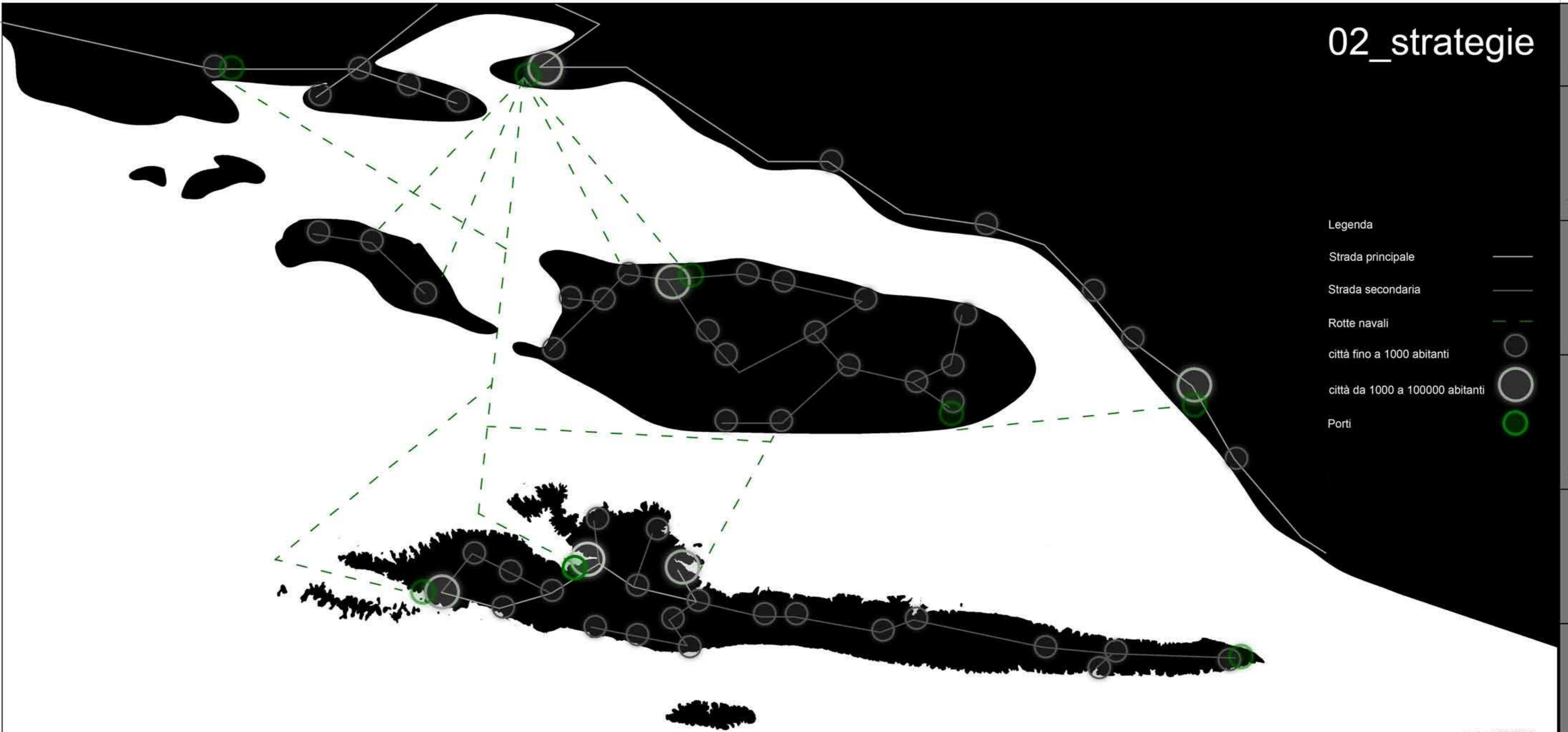
costa croata _ isola di hvar_stari grad



02_strategie

50km
40km
30km
20km
10km
0km

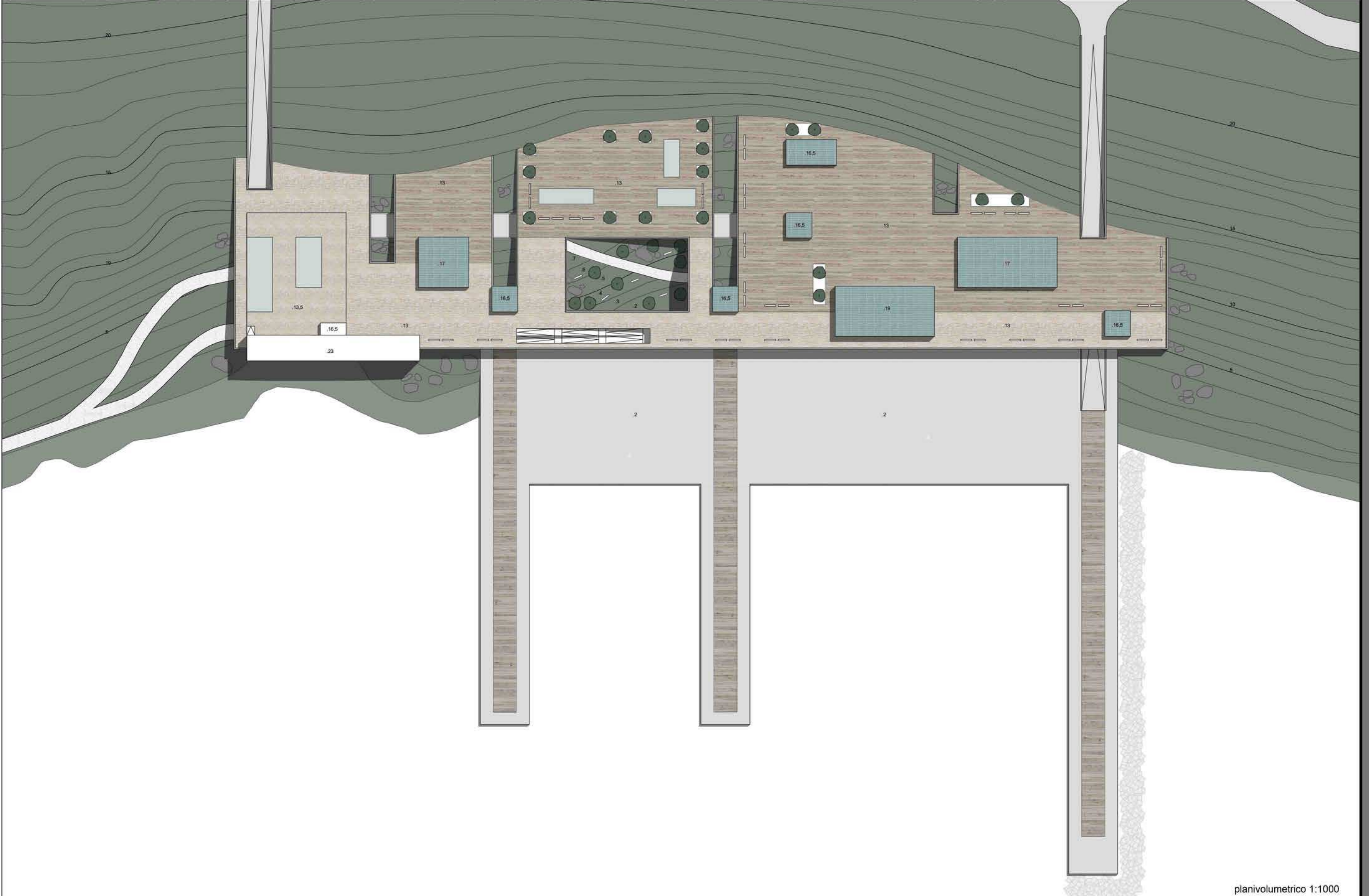
- Legenda
- Strada principale
 - Strada secondaria
 - Rotte navali
 - città fino a 1000 abitanti
 - città da 1000 a 100000 abitanti
 - Porti



scala 1:200000

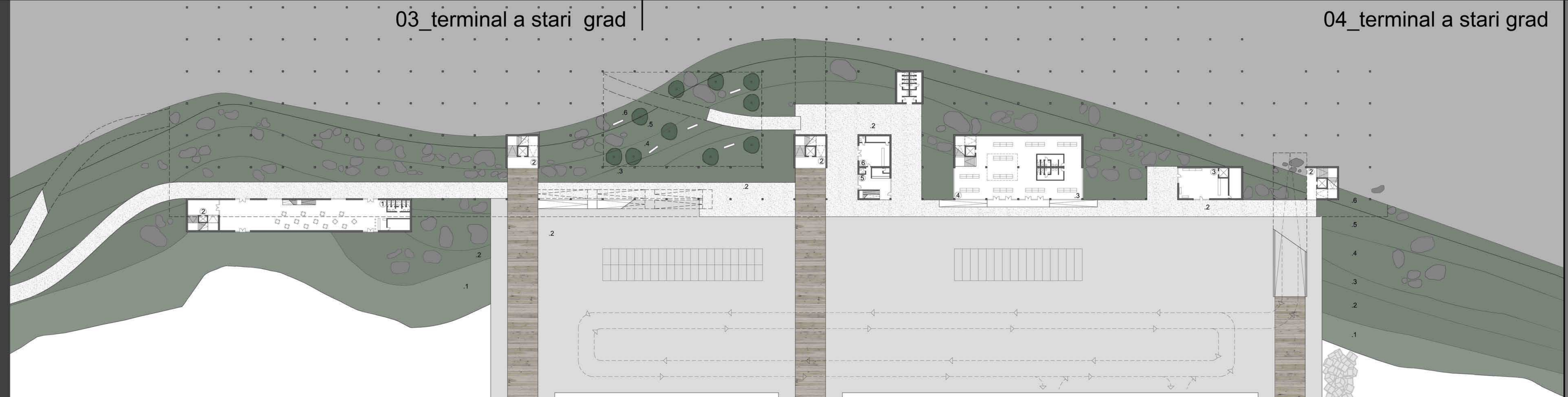
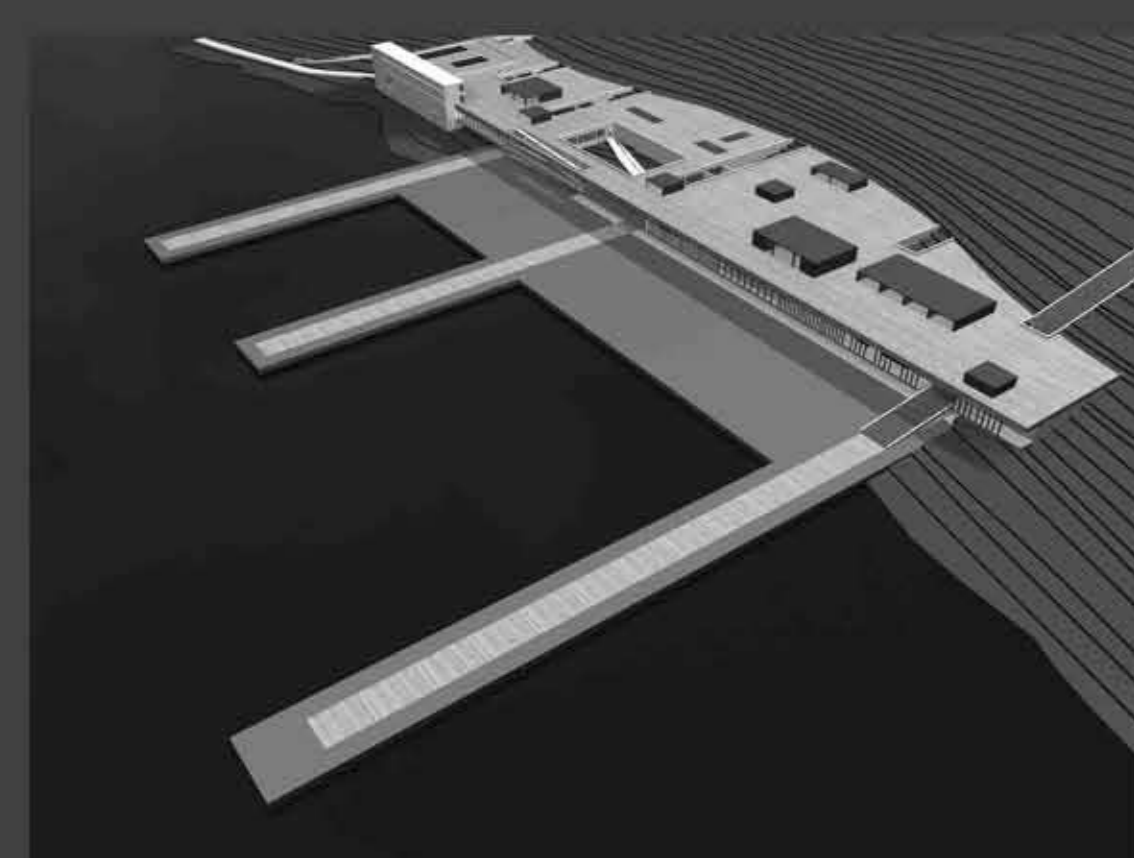
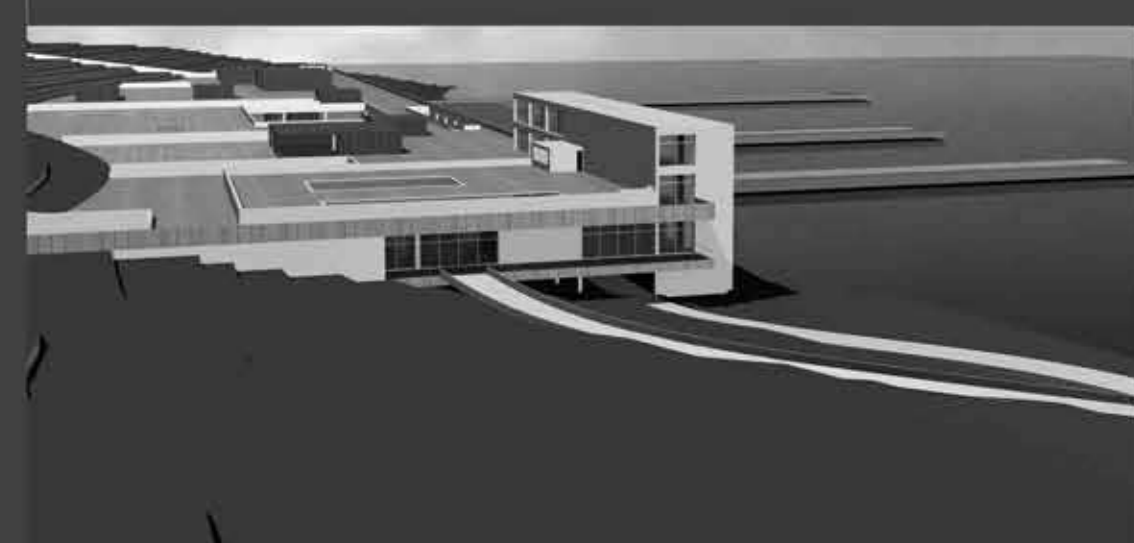
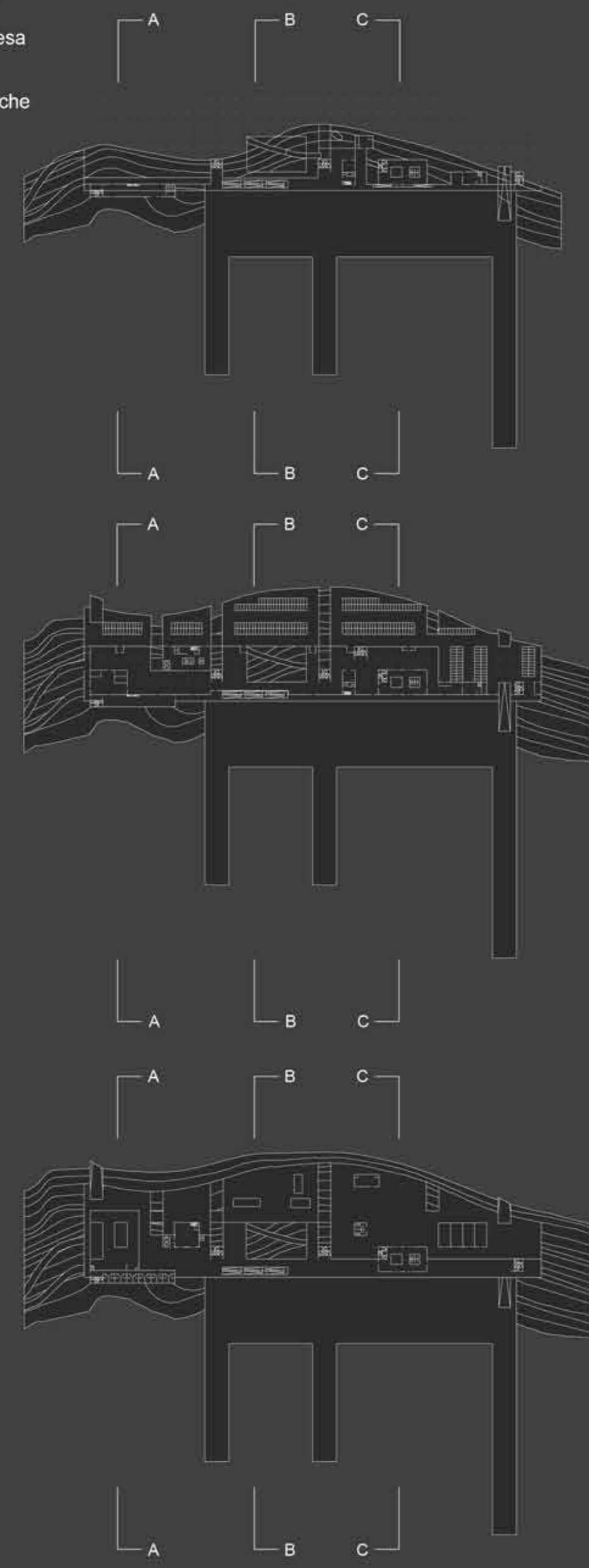
stari grad 1:10000

idea progettuale



planivolumetrico 1:1000

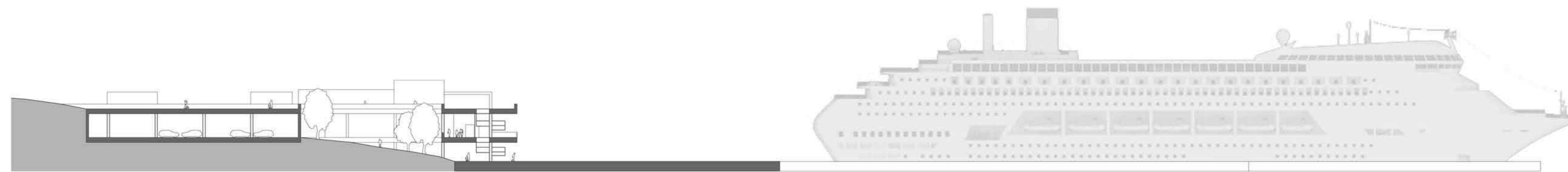
- 1 Bar- chalet
- 2 Rampa scale
- 3 Info point
- 4 Sala d'attesa
- 5 Bar
- 6 Affitto barche



pianta piano terra 1:500



sezione A_A 1:500



sezione B_B 1:500



sezione C_C 1:500



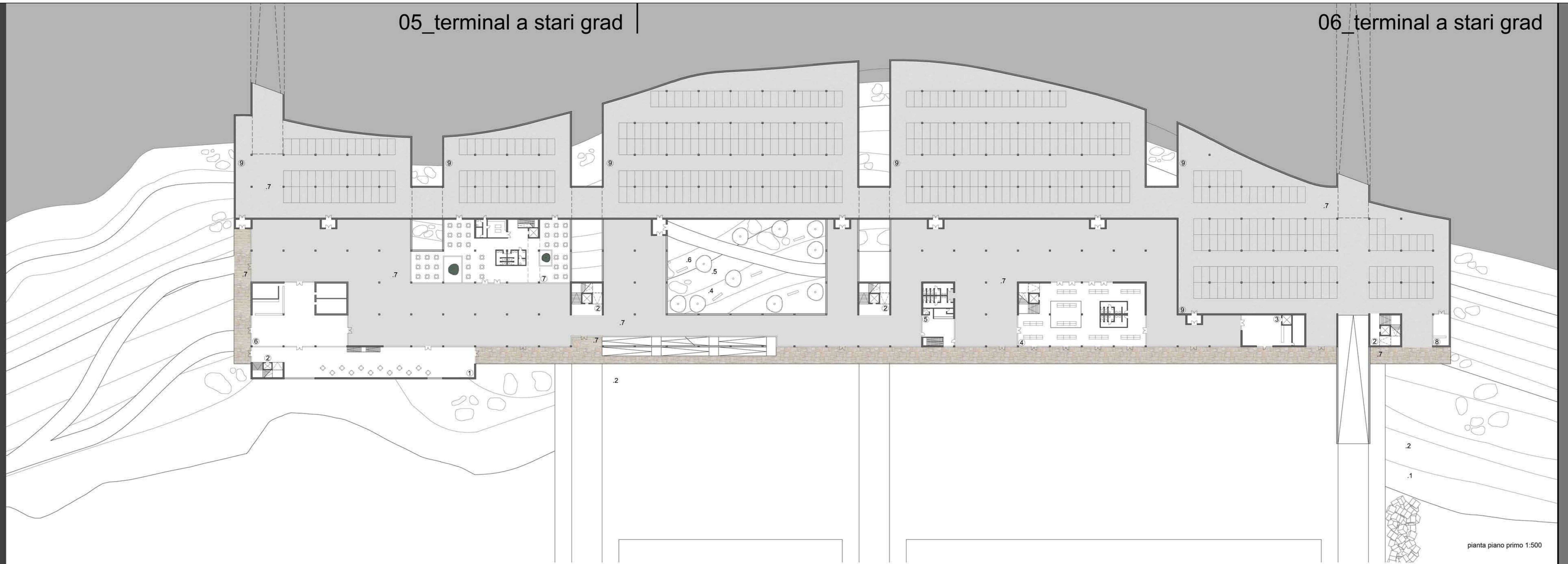
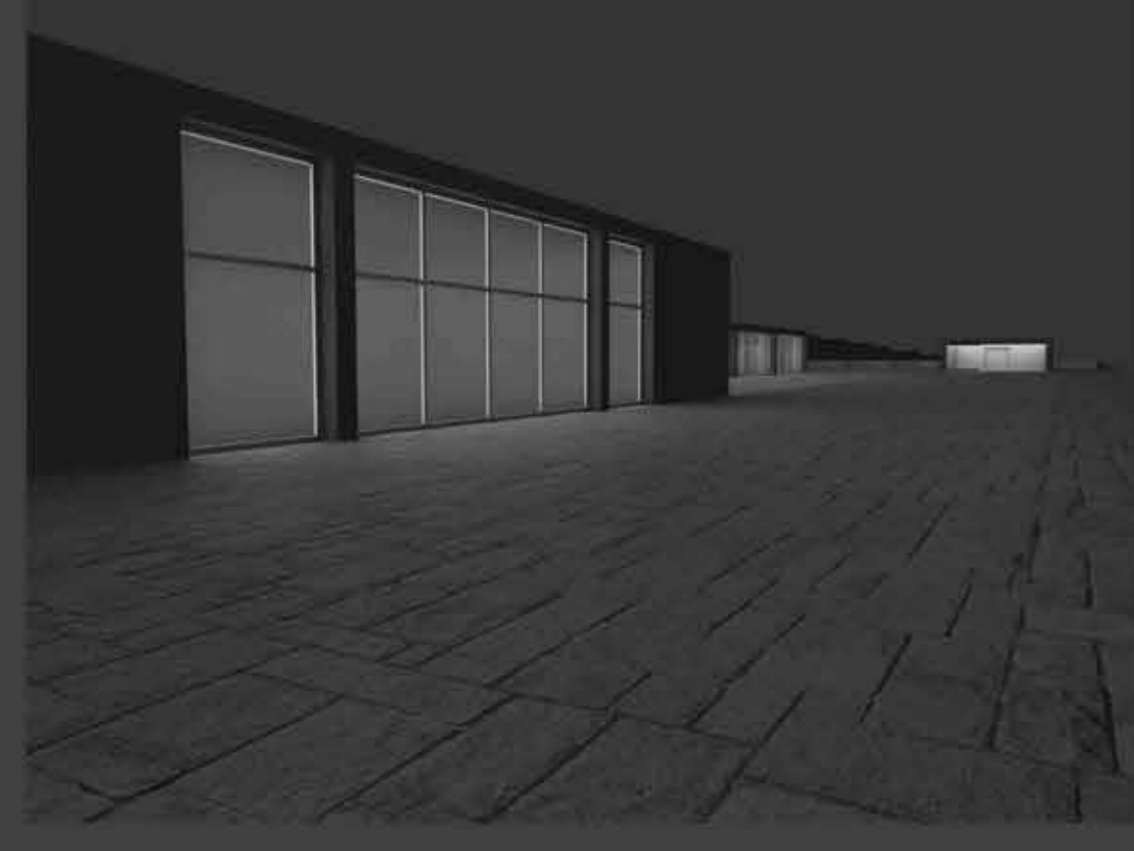
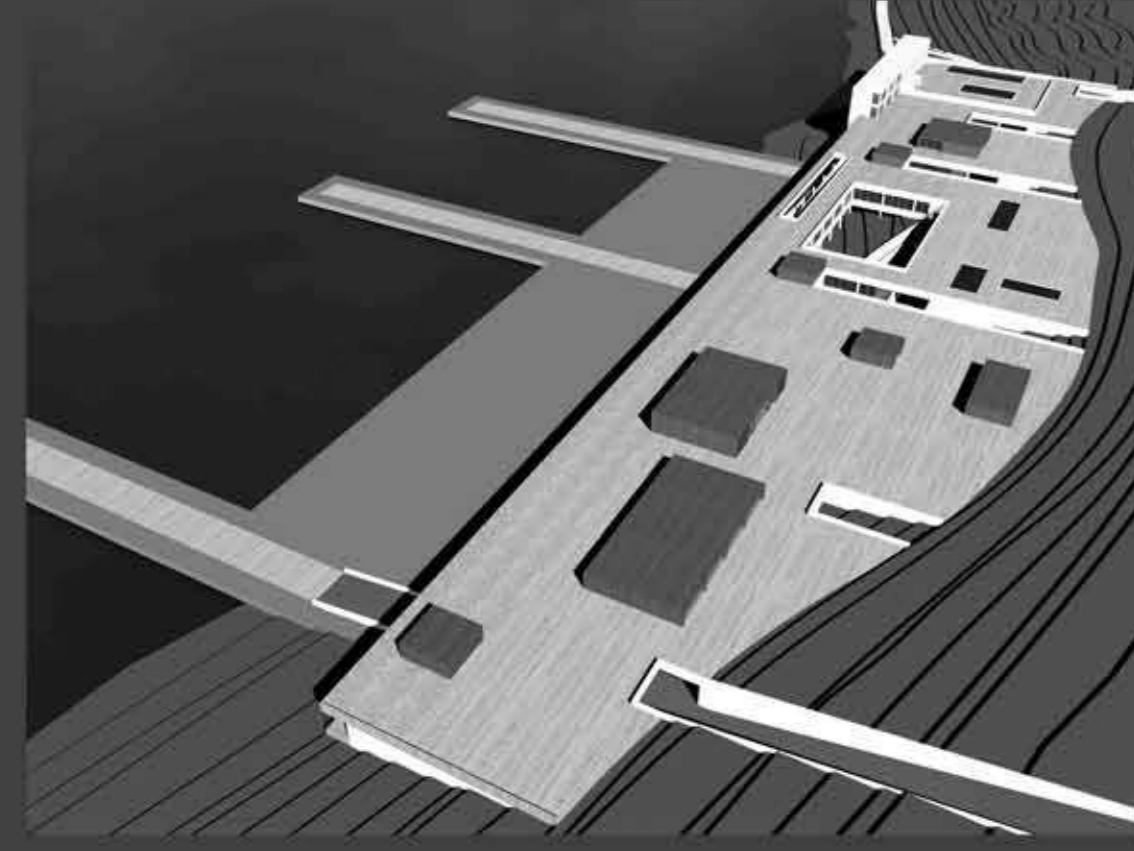
prospetto 1:500

05_terminal a stari grad

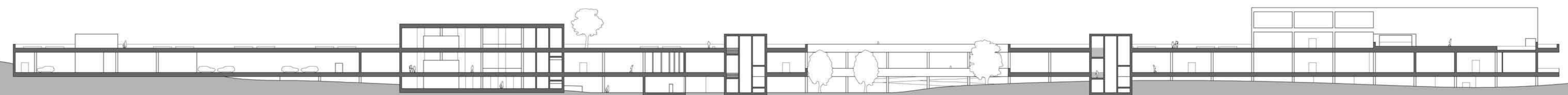
06_terminal a stari grad

Legenda

- 1 Bar- chalet
- 2 Rampa scale
- 3 Info point
- 4 Sala d'attesa
- 5 Bar
- 6 Hotel
- 7 Ristorante
- 8 Affitto auto
- 9 Parcheggi
- 10 Negozi



pianta piano primo 1:500

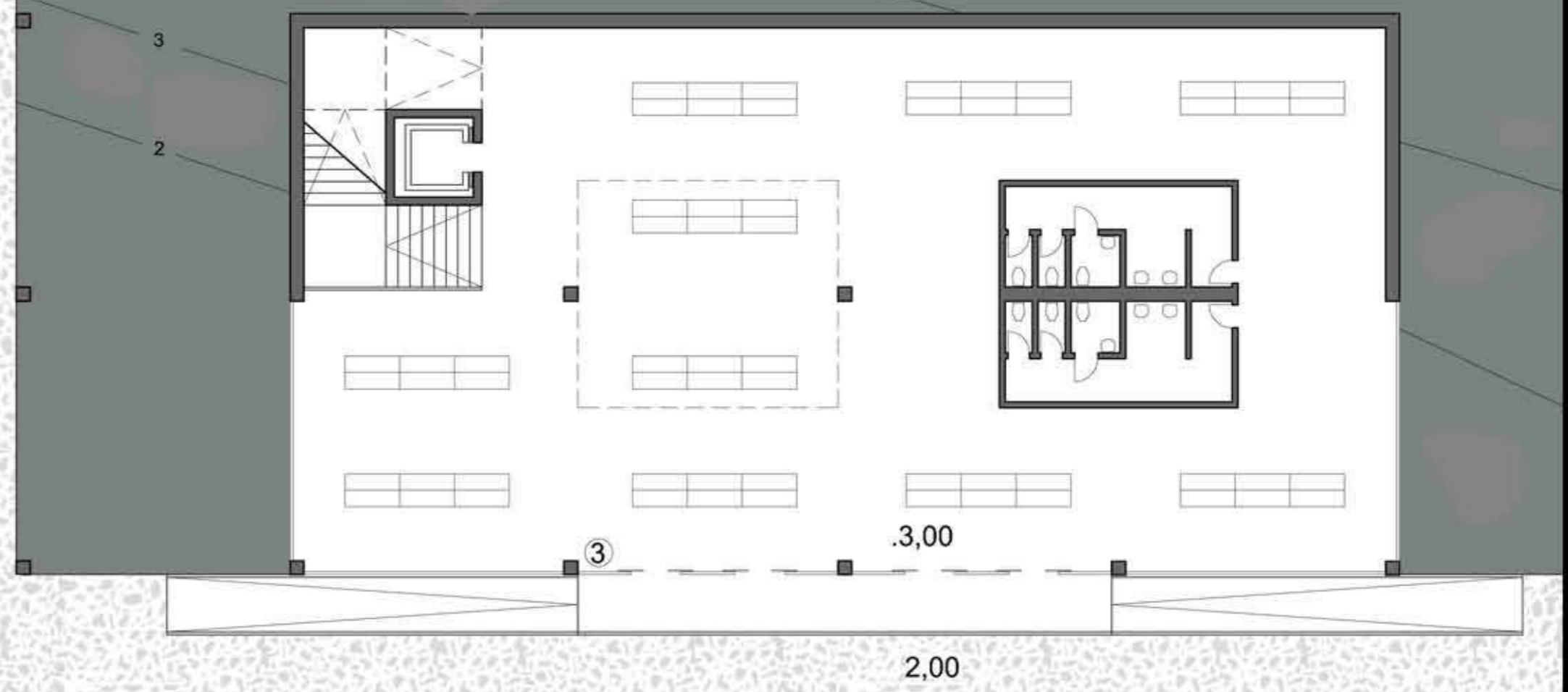
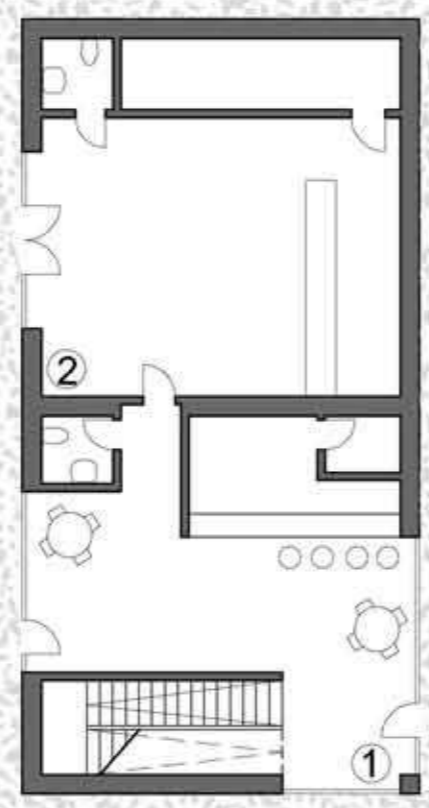


sezione D-D 1:500

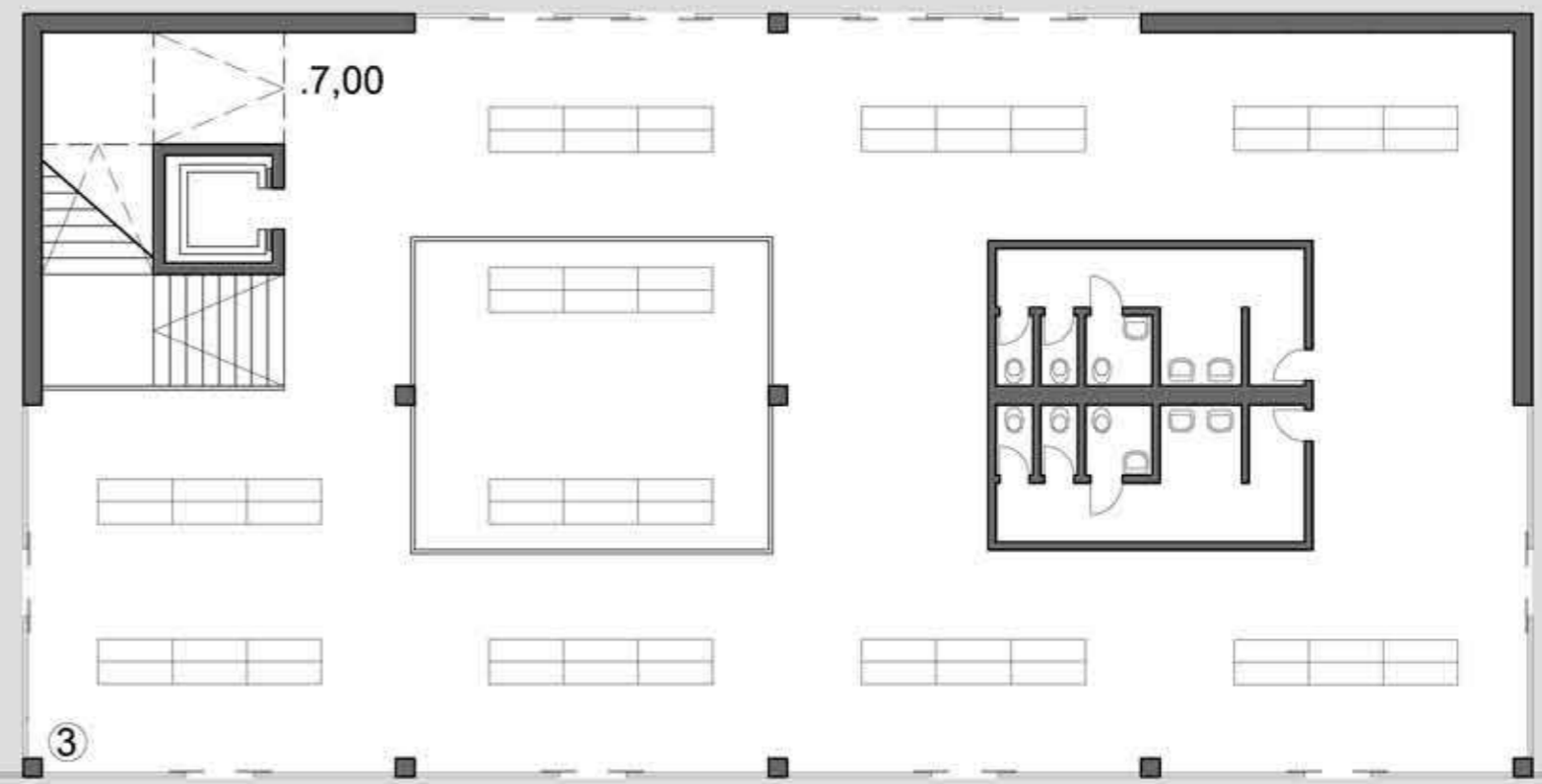
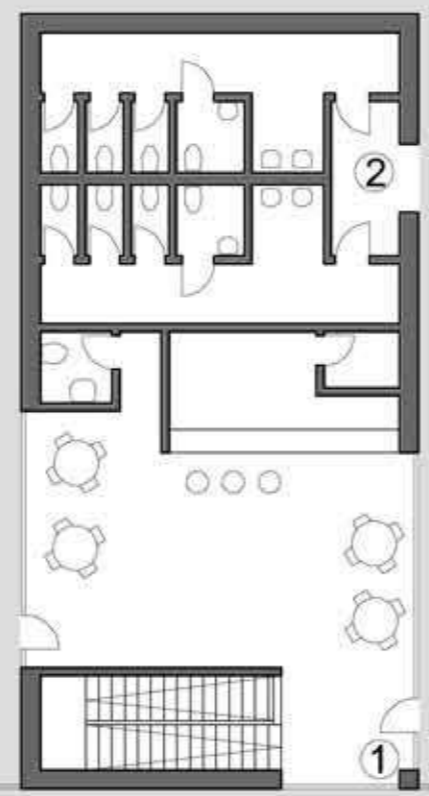


pianta piano secondo 1:500

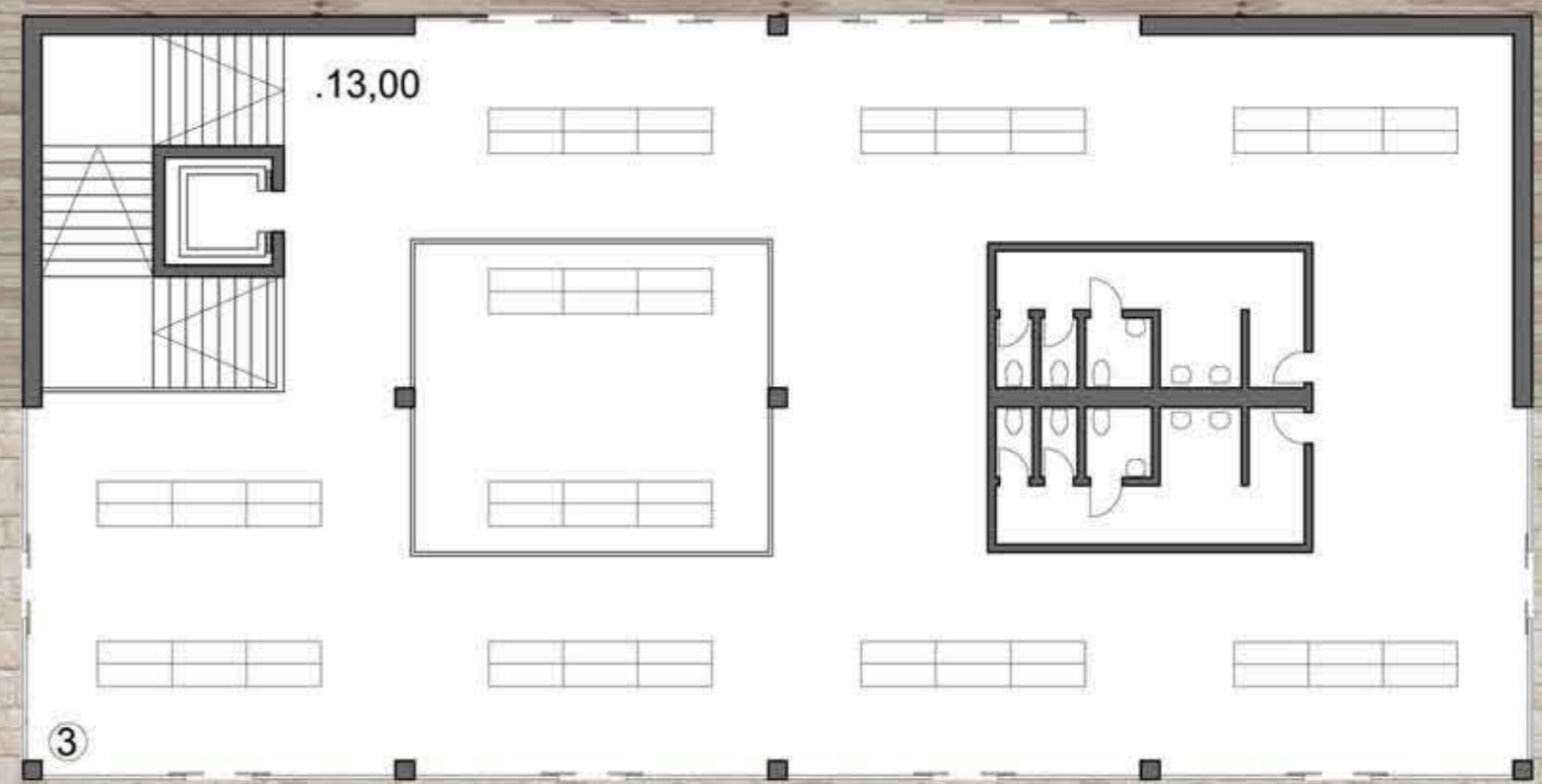
07_sala d'attesa



pianta piano terra 1:200

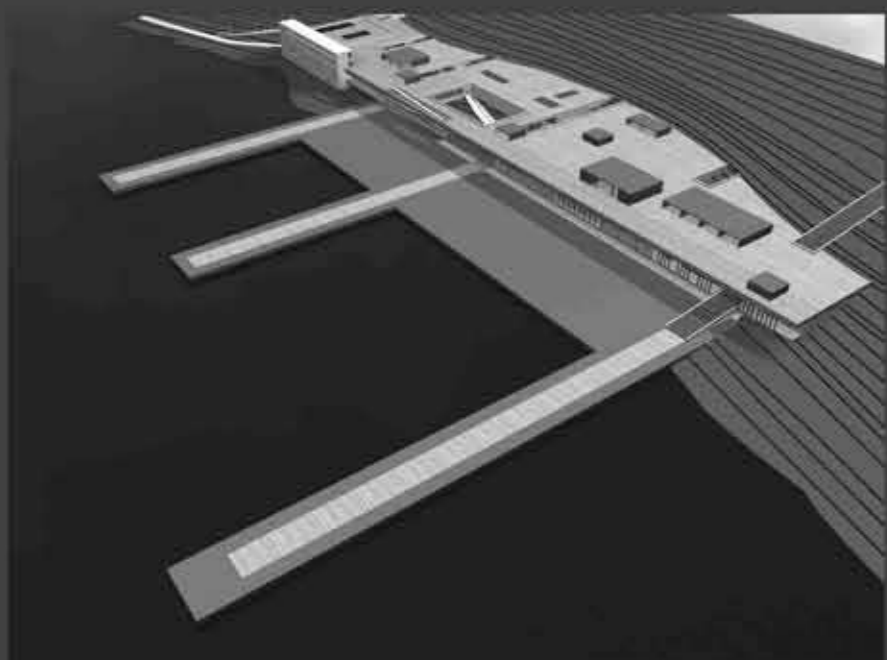
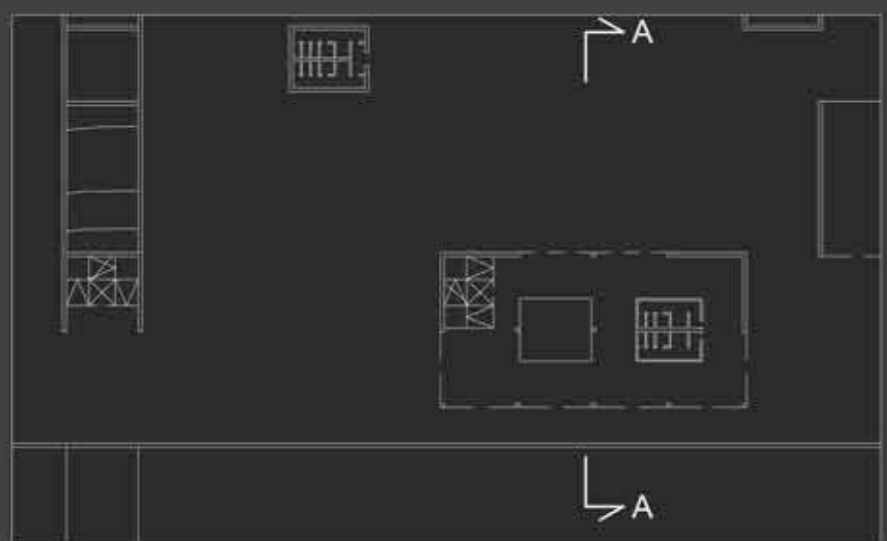
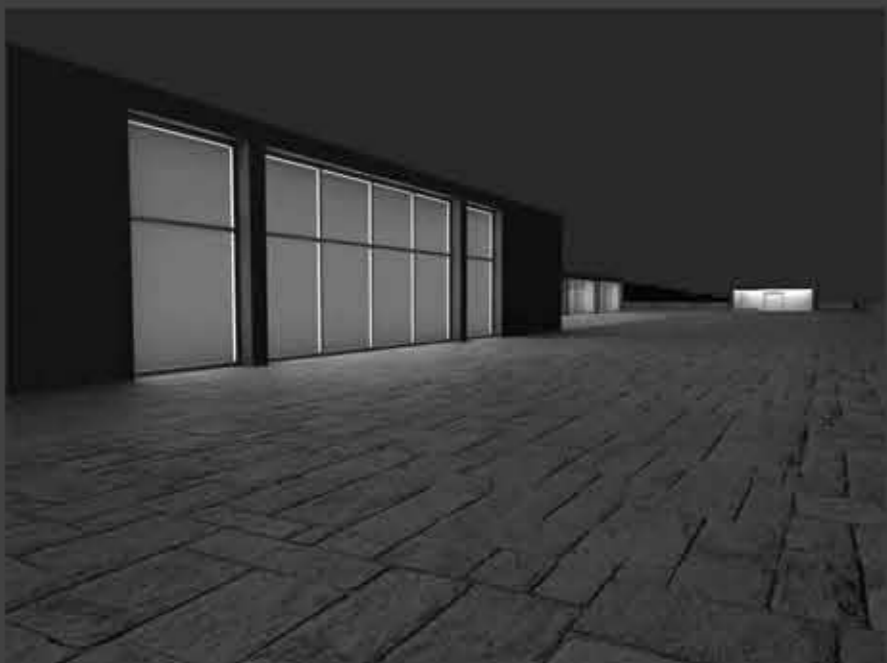
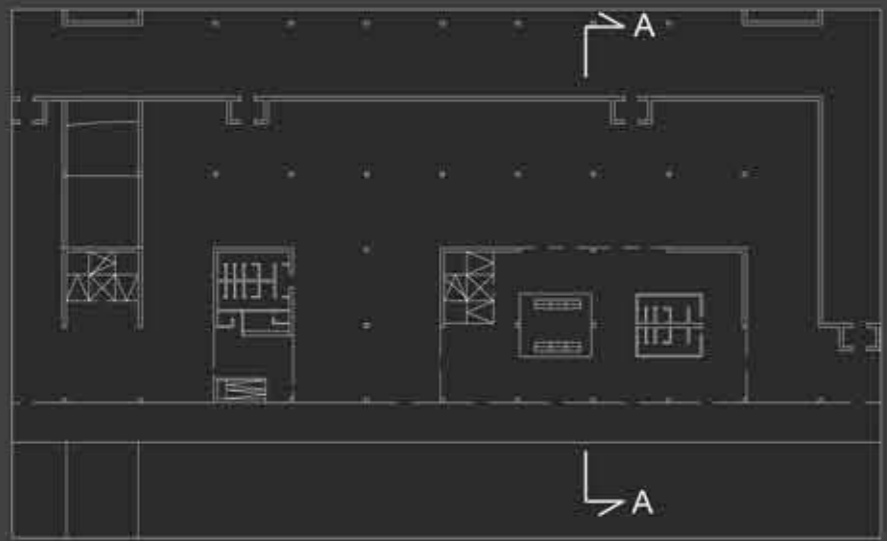
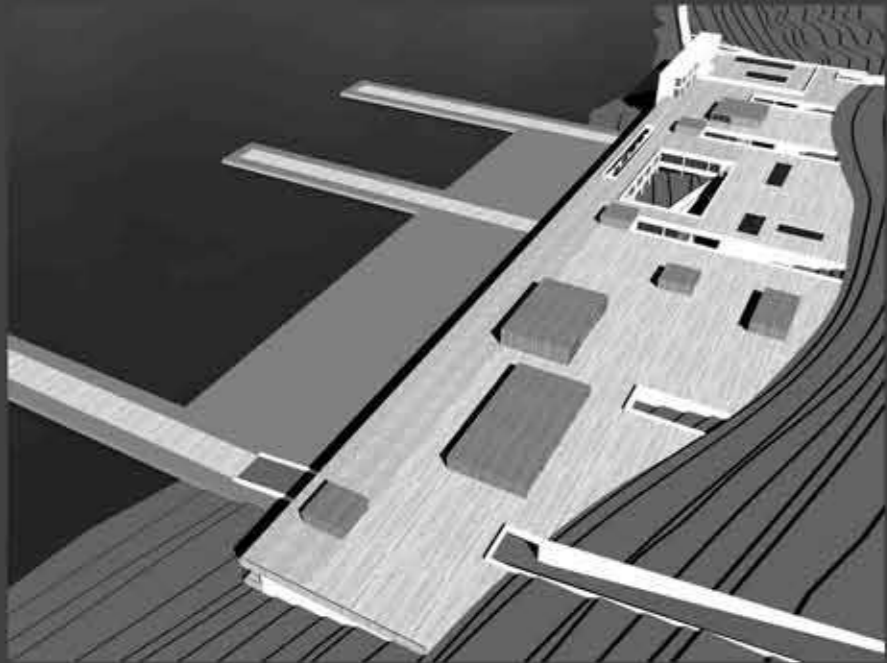
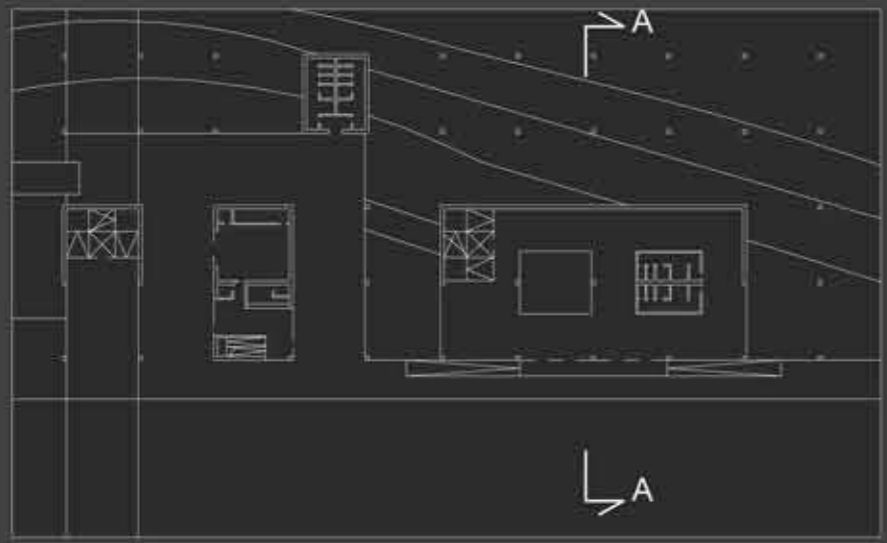
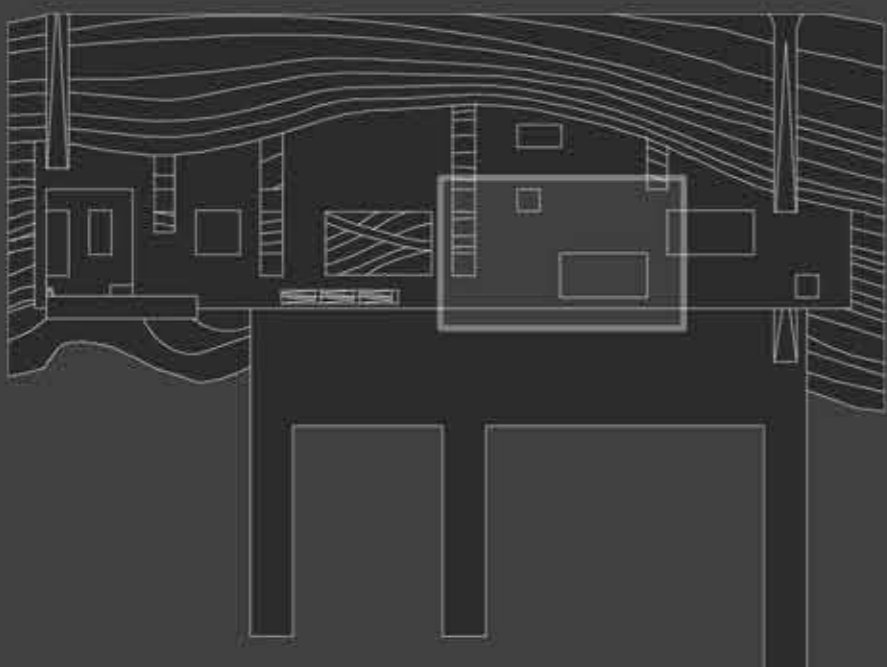
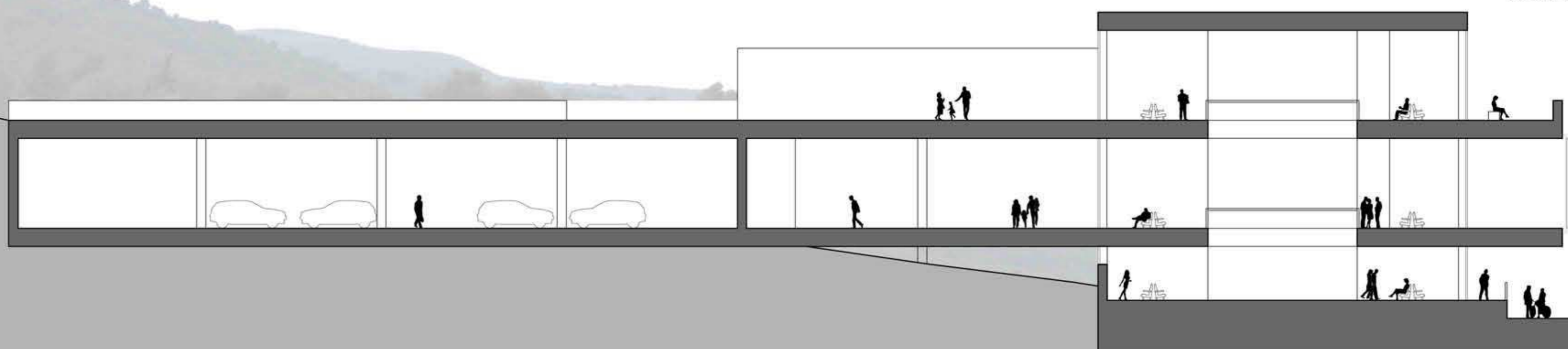


pianta piano primo 1:200



pianta piano secondo 1:200

sezione A_A 1:200



- 1 bar
- 2 affitto barche
- 3 sala d'attesa
- 4 bagni

08_ristorante

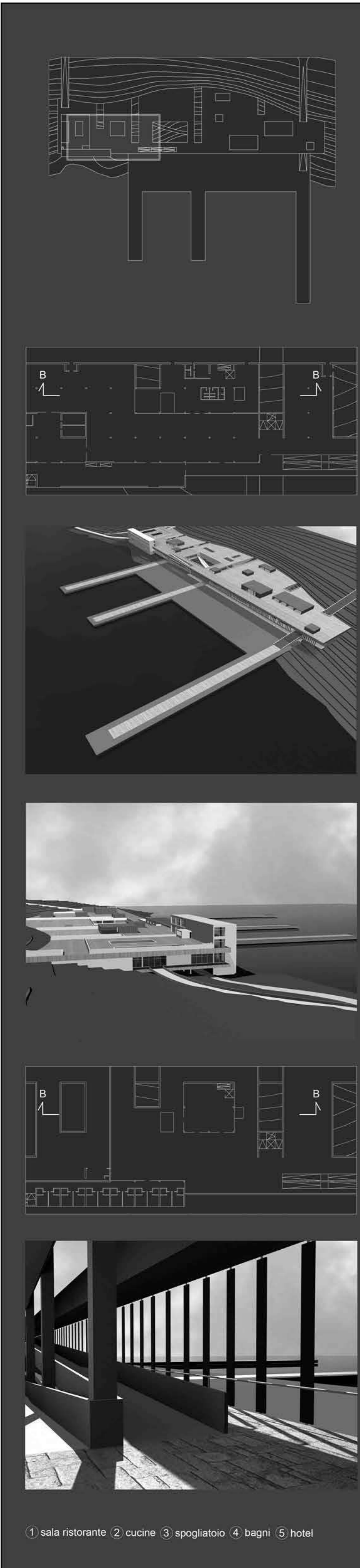


pianta piano primo 1:200



pianta piano secondo 1:200

sezione B_B 1:200



① sala ristorante ② cucine ③ spogliatoio ④ bagni ⑤ hotel

