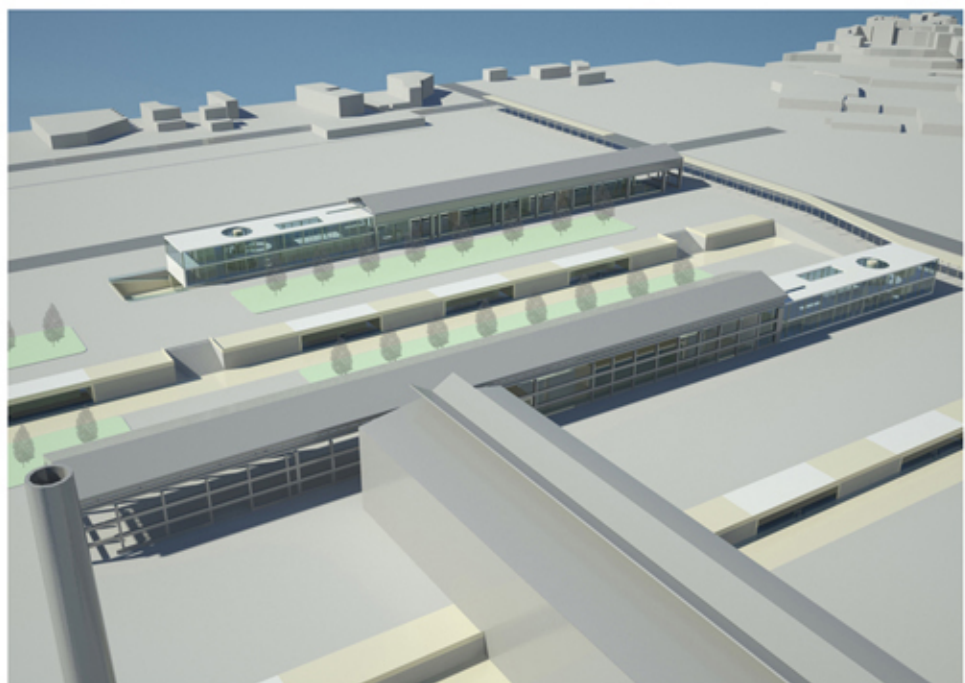
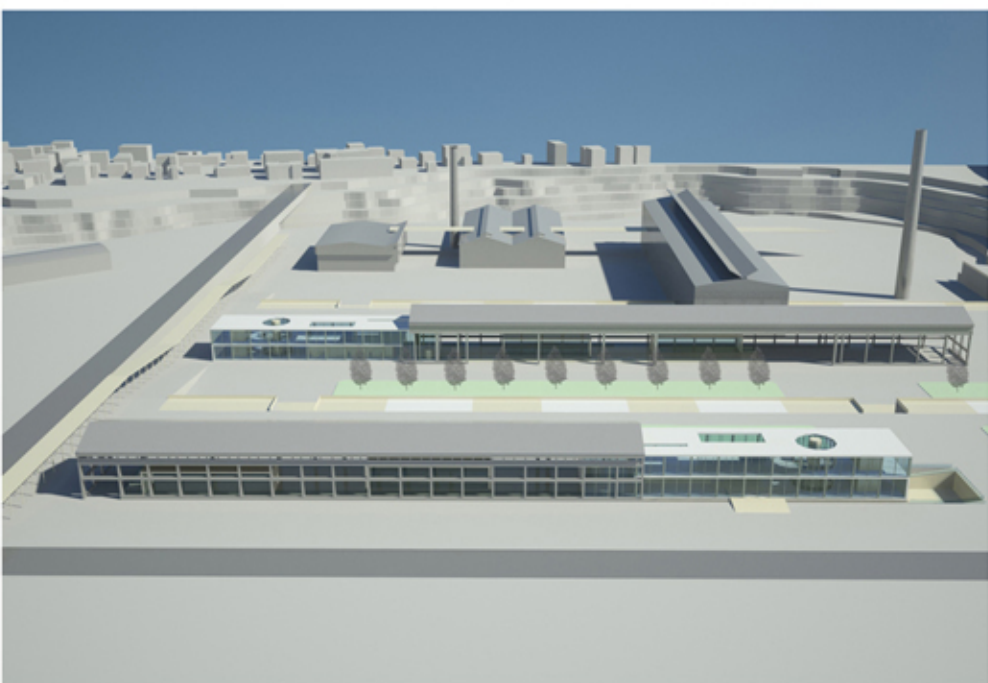
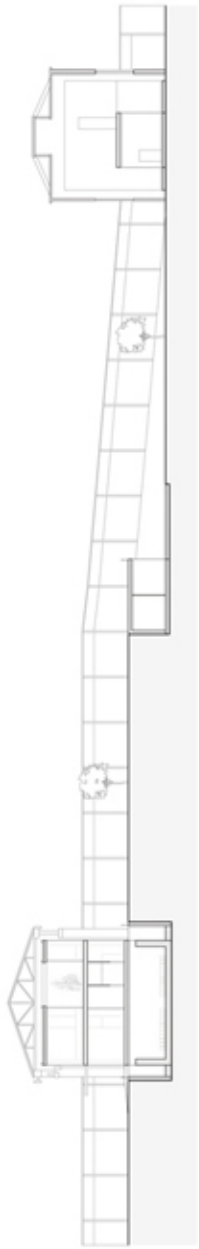
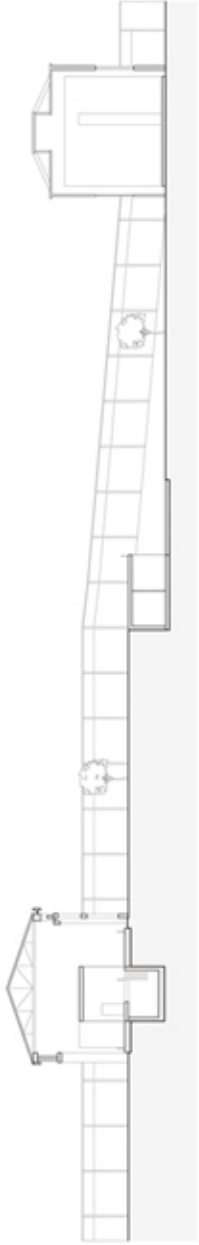


Masterplan 1:2000

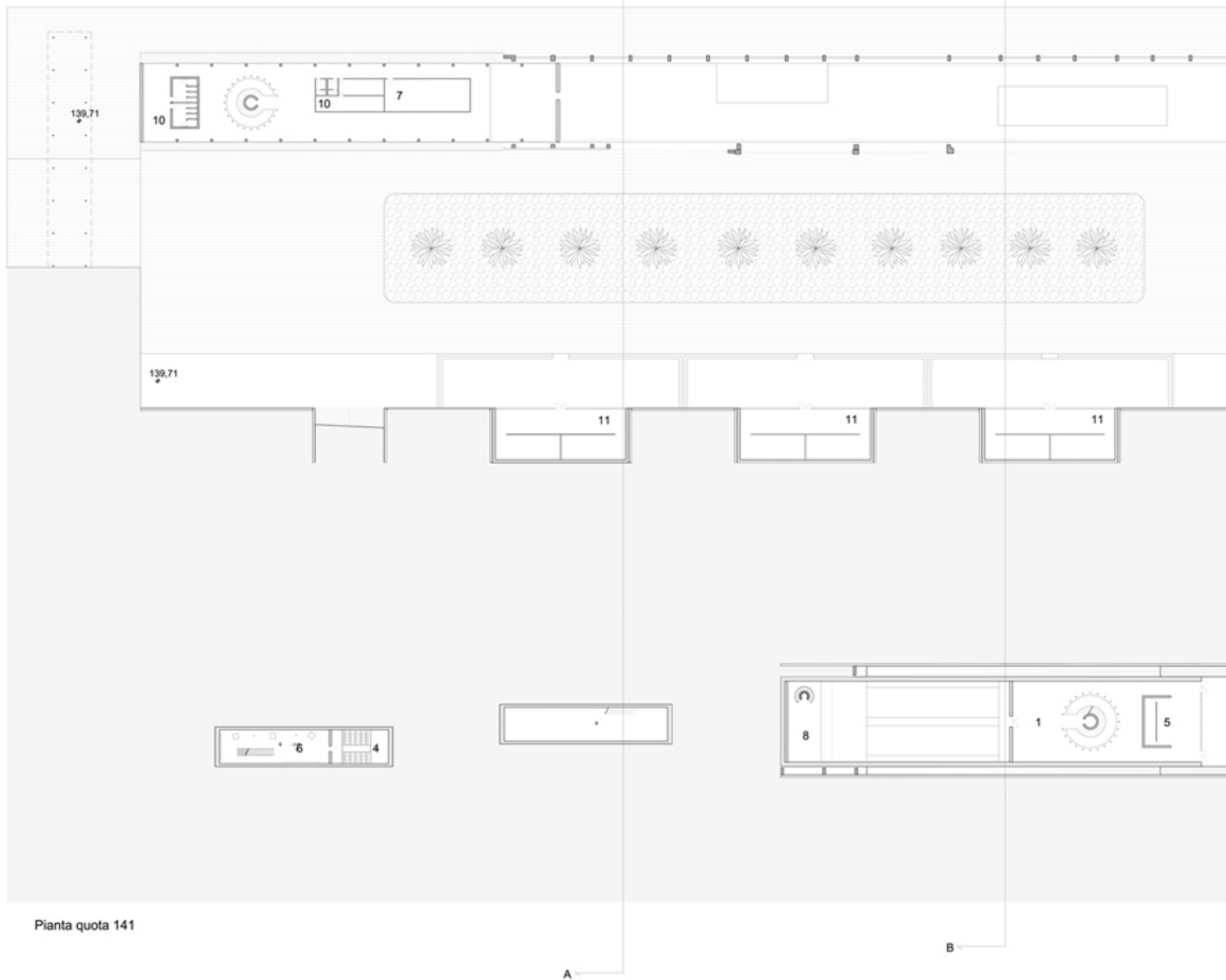




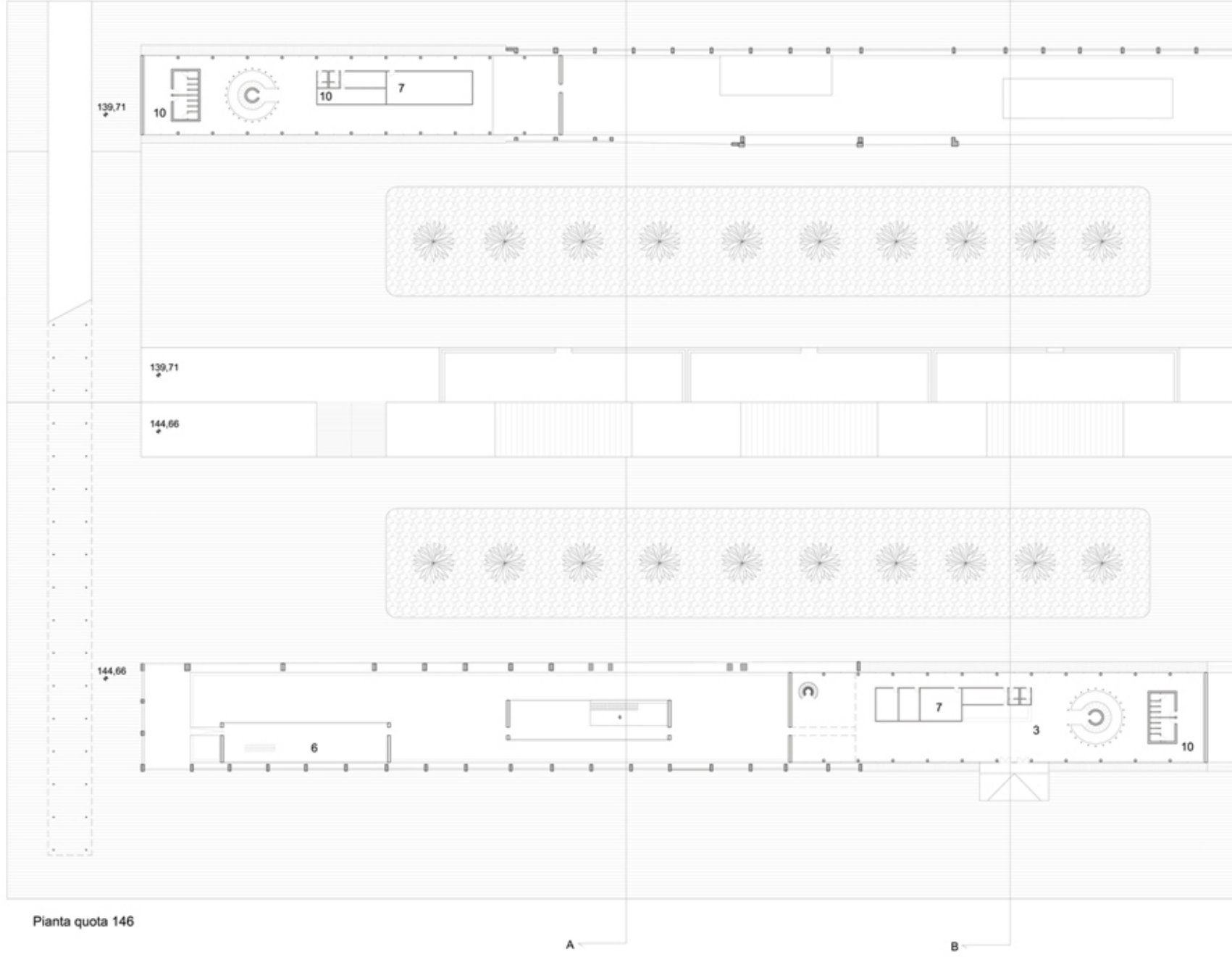
Sezione B-B'



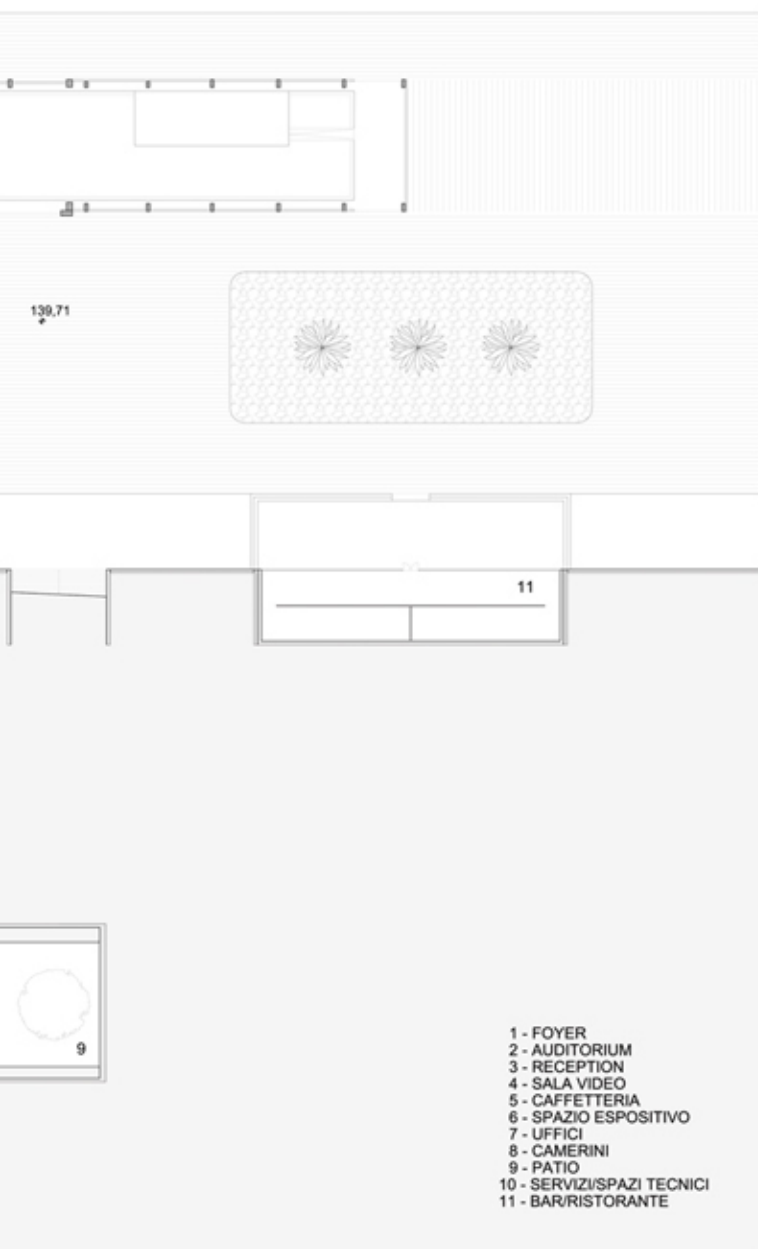
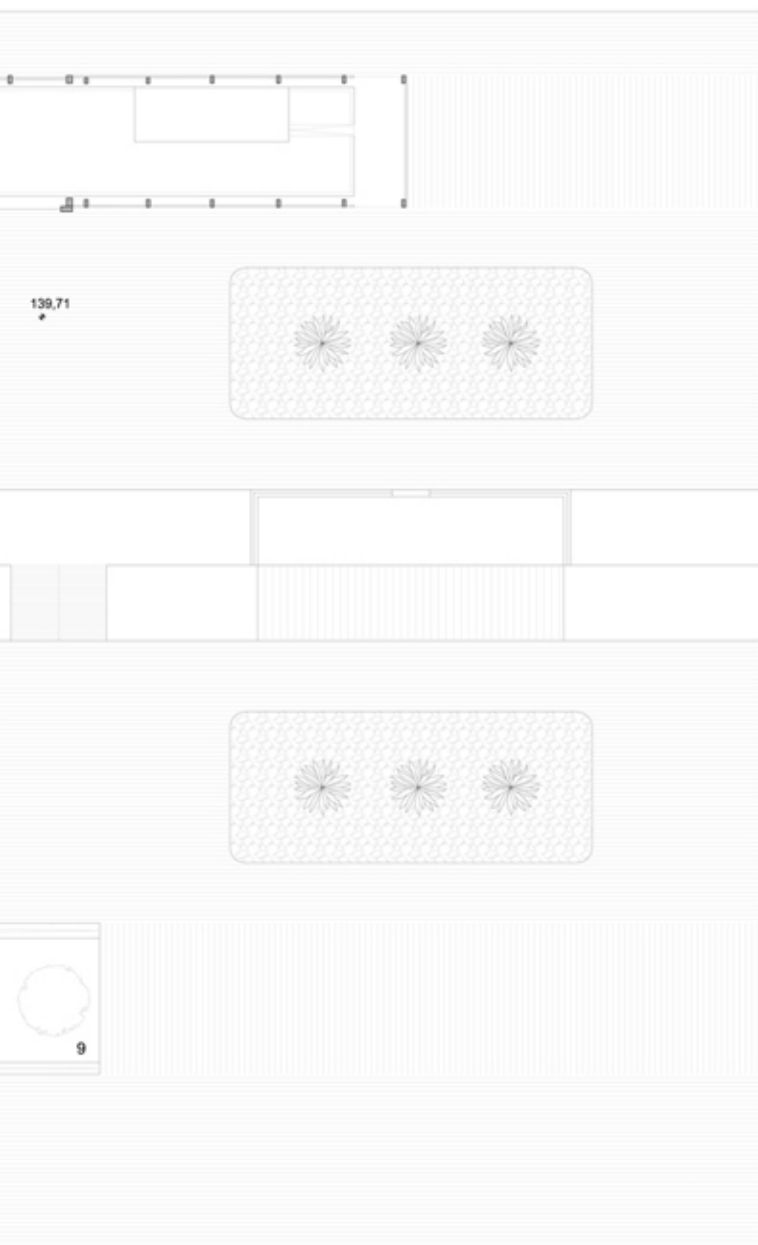
Sezione A-A'



Pianta quota 141

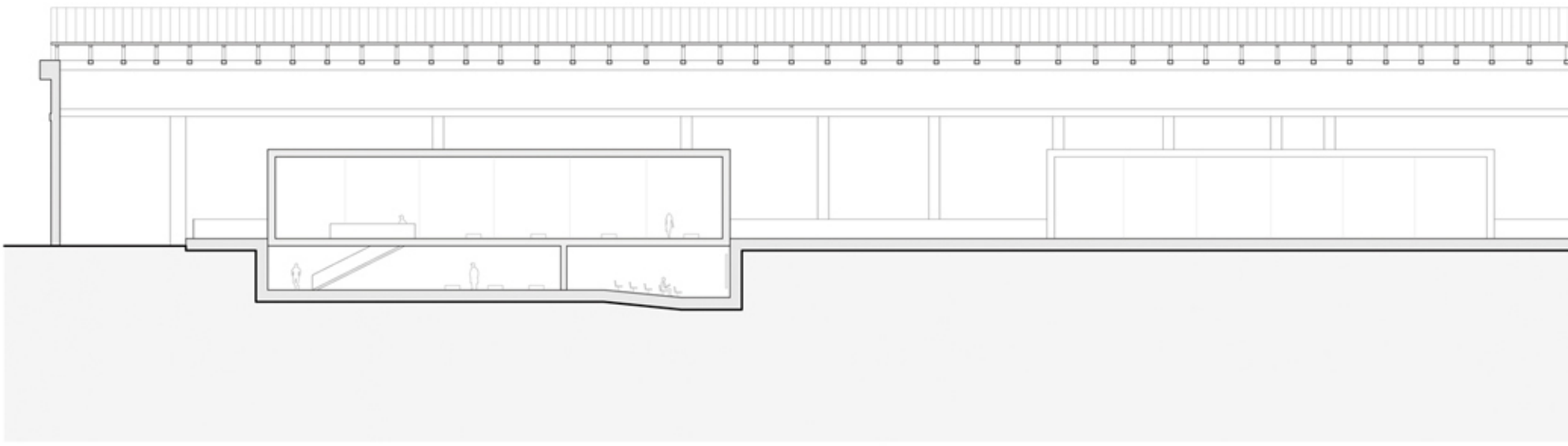


Pianta quota 146

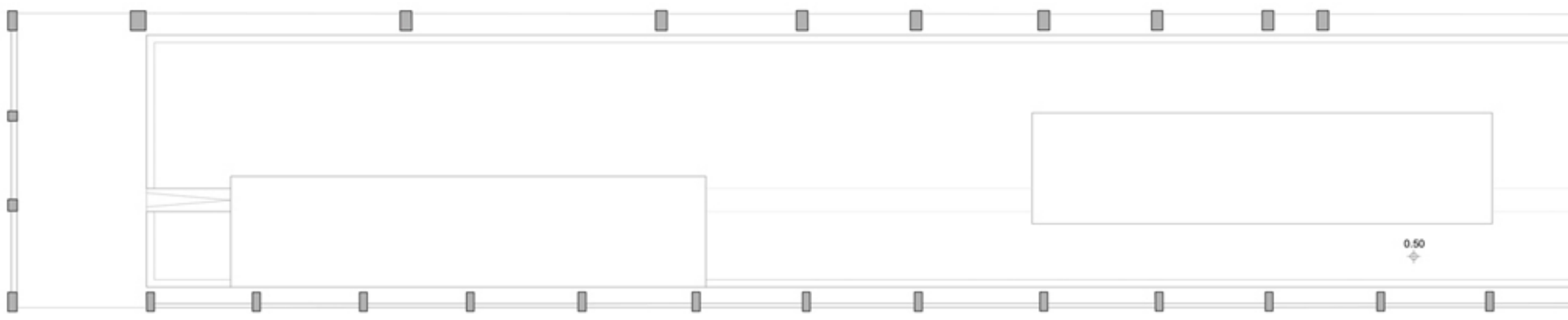


SCALA 1:500

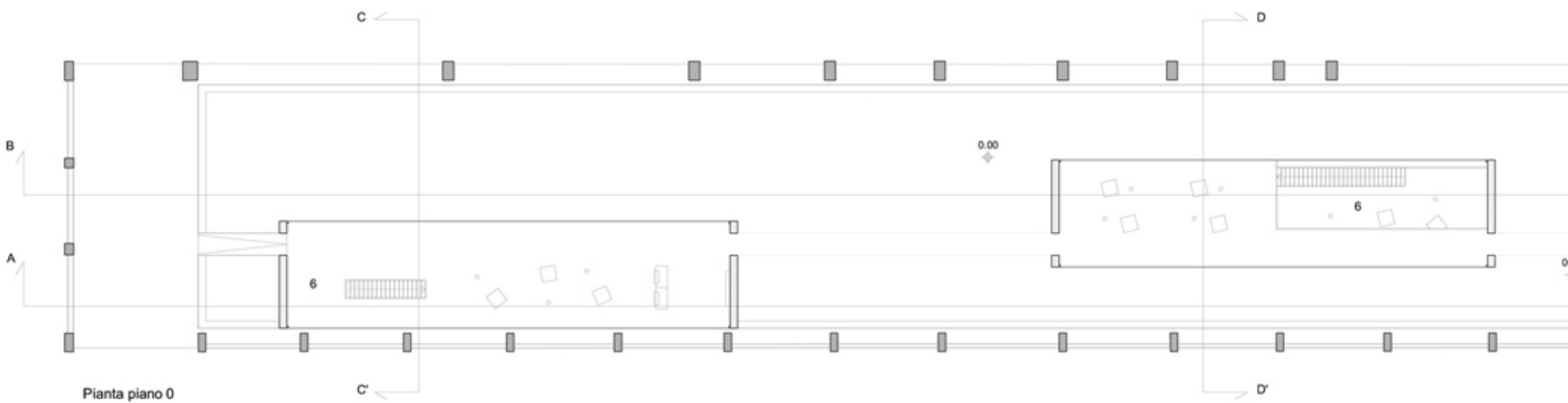




Sezione A-A'



Pianta piano 1

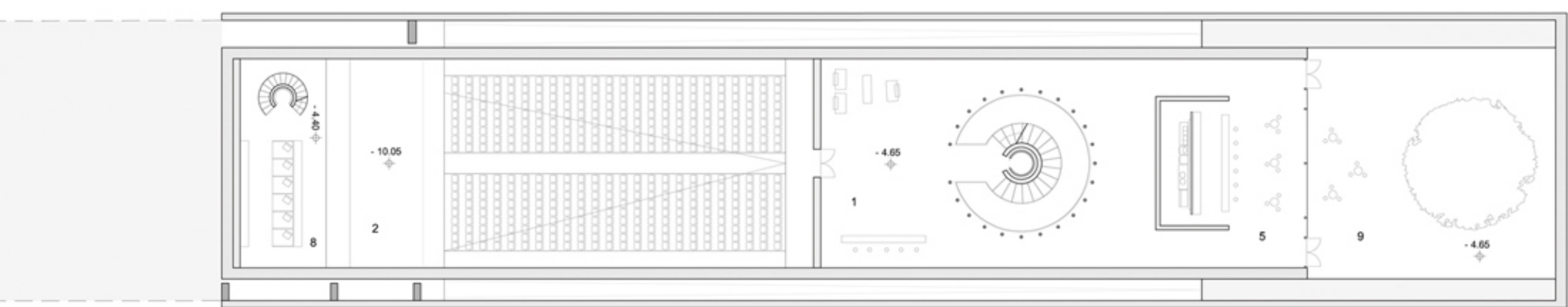
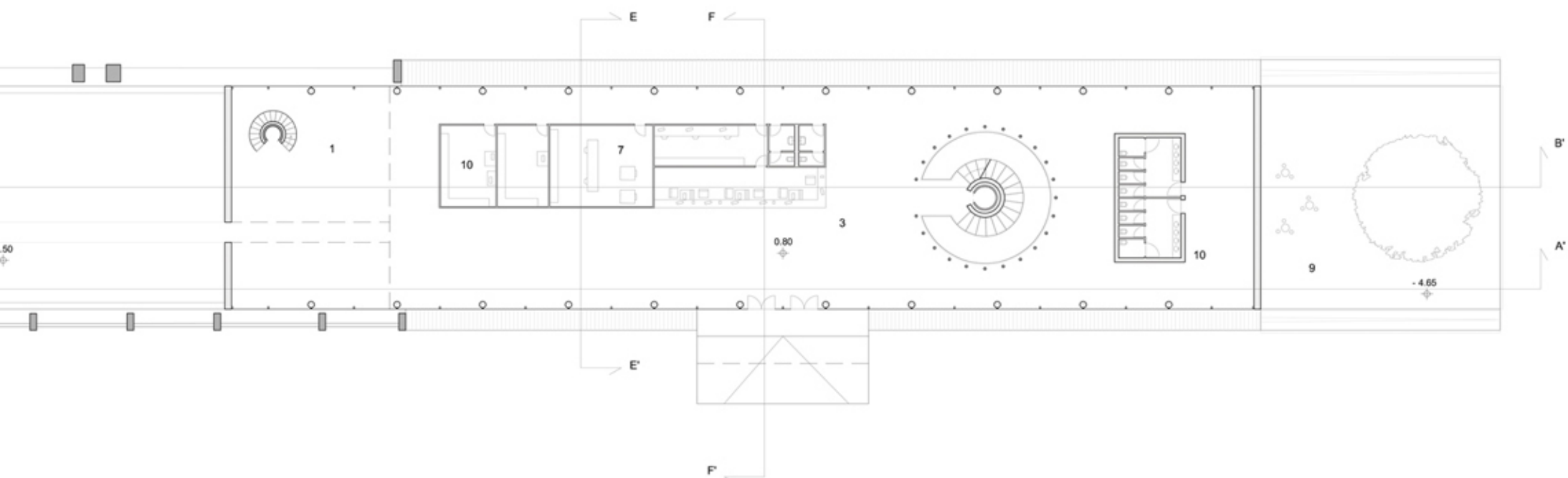
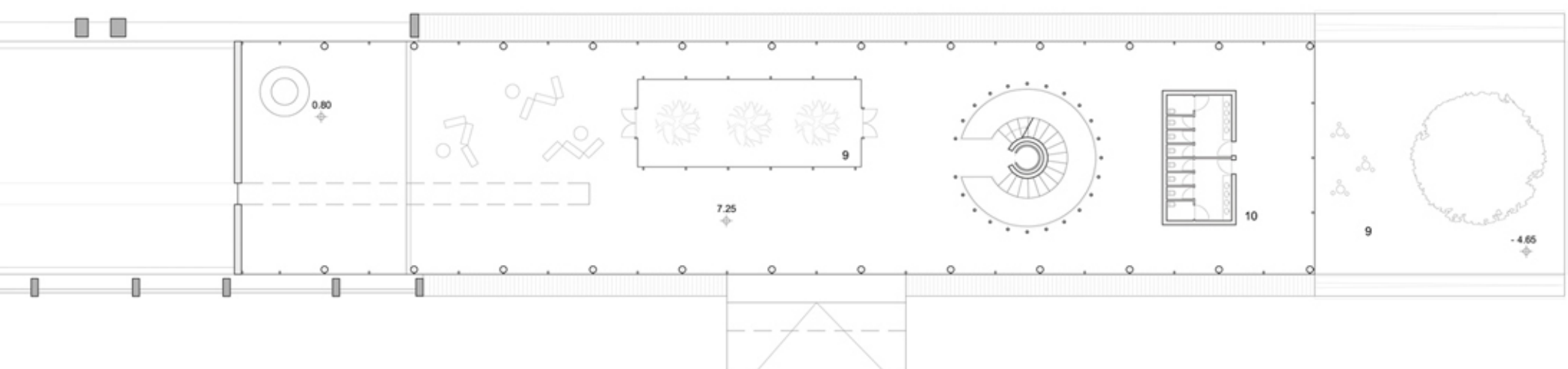
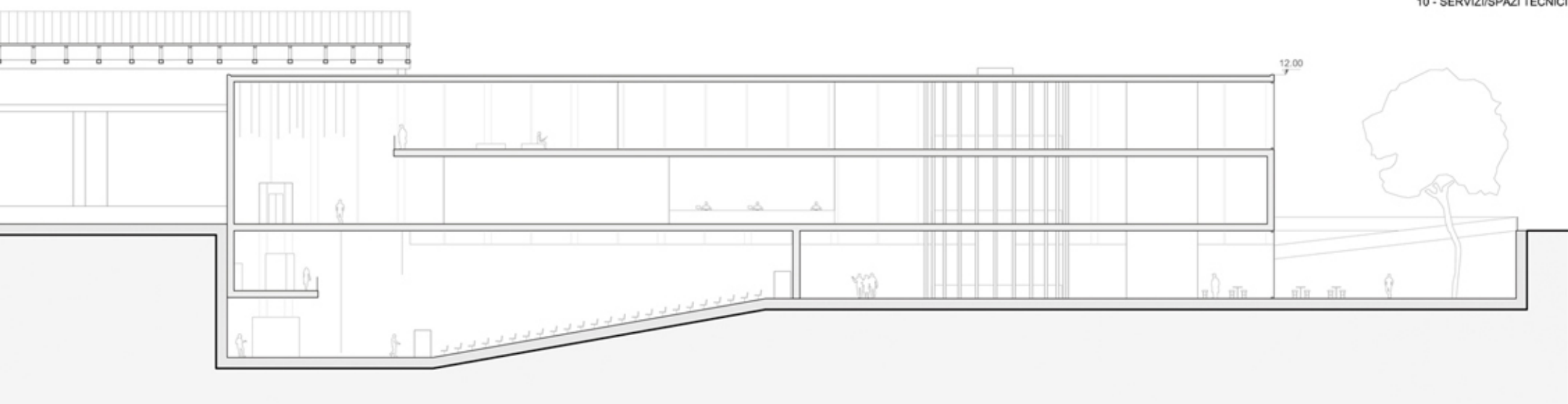


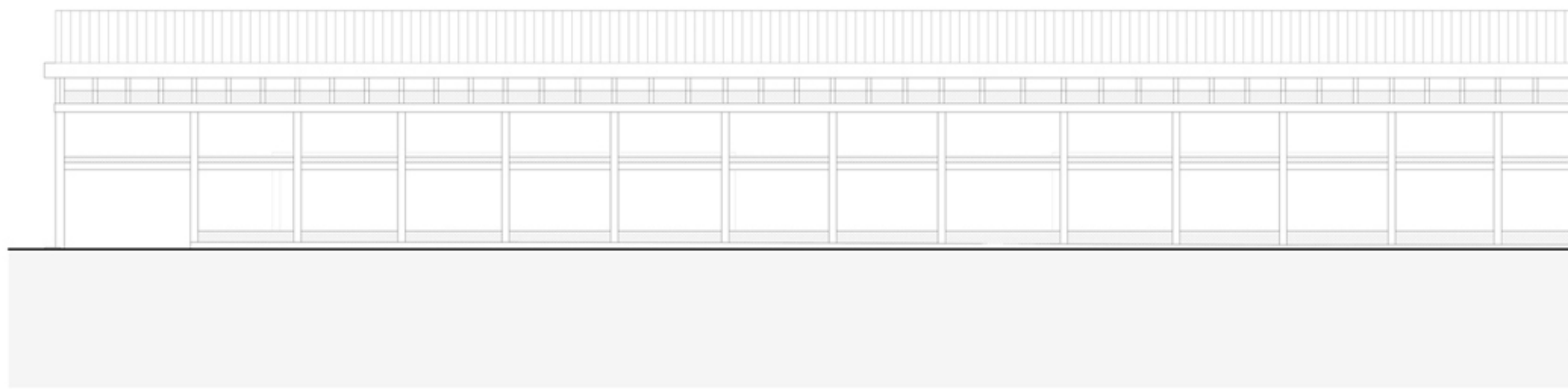
Pianta piano 0



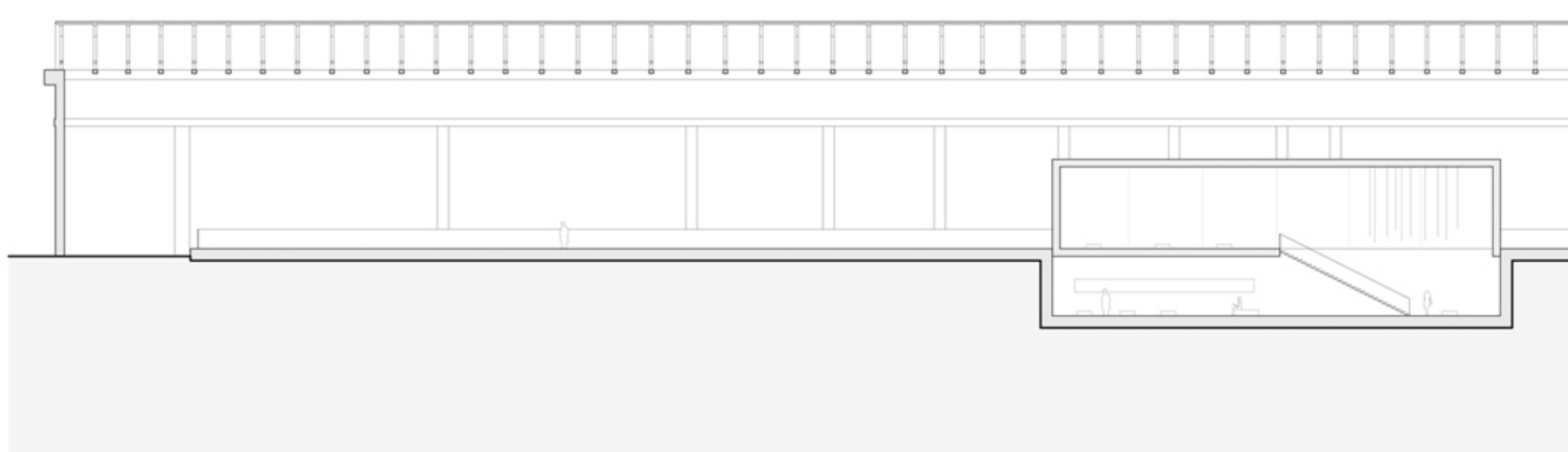
Pianta piano -1

- 1 - FOYER
- 2 - AUDITORIUM
- 3 - RECEPTION
- 4 - SALA VIDEO
- 5 - CAFFETTERIA
- 6 - SPAZIO ESPOSITIVO
- 7 - UFFICI
- 8 - CAMERINI
- 9 - PATIO
- 10 - SERVIZI/SPAZI TECNICI

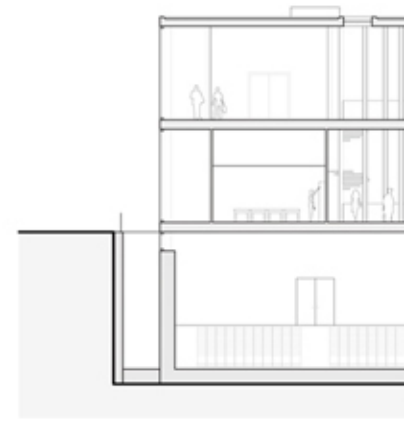
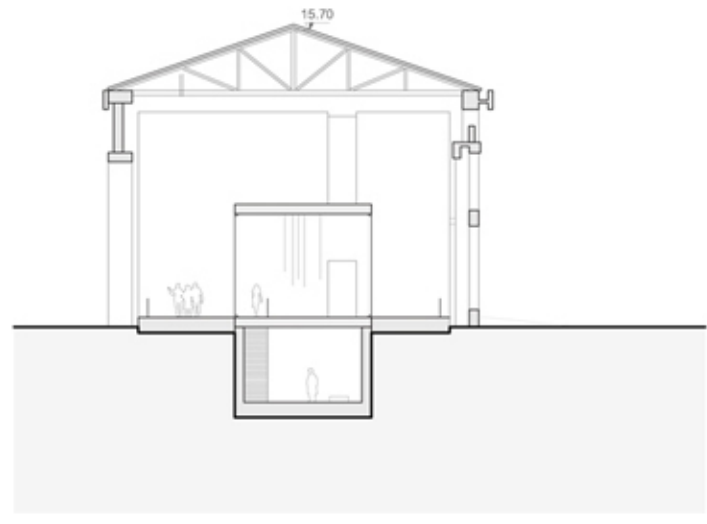
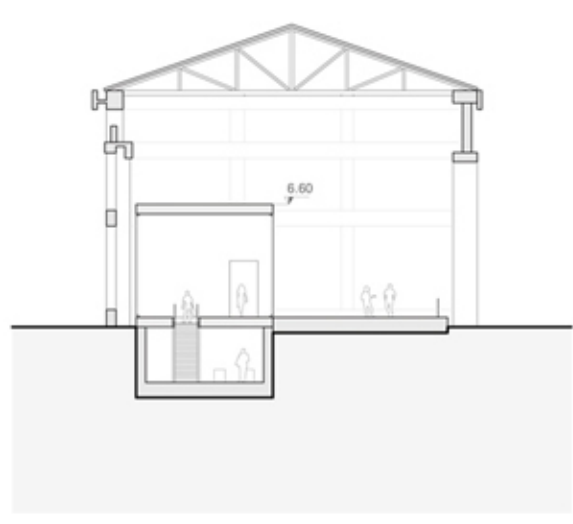




Prospetto Sud



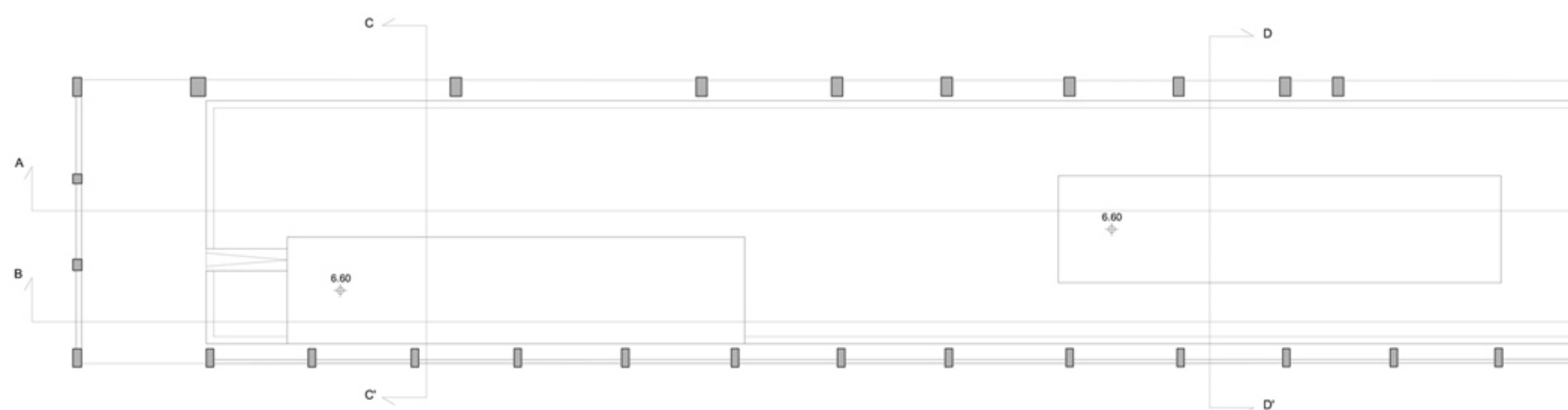
Sezione B-B'



Sezione C-C'

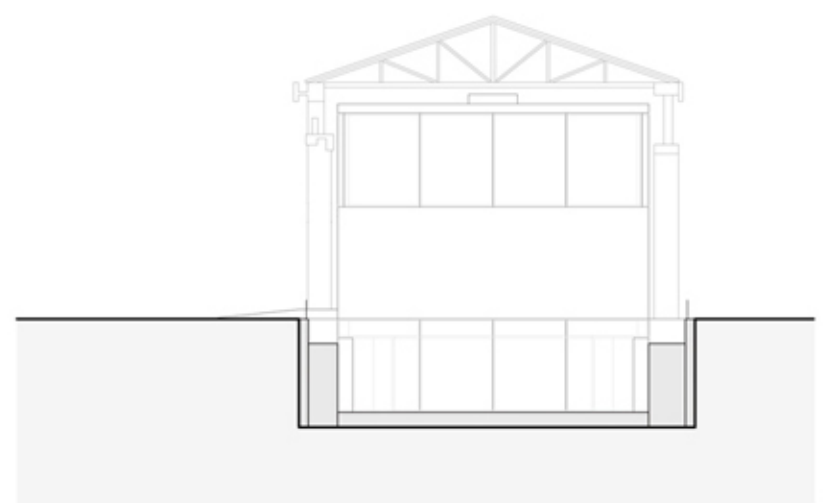
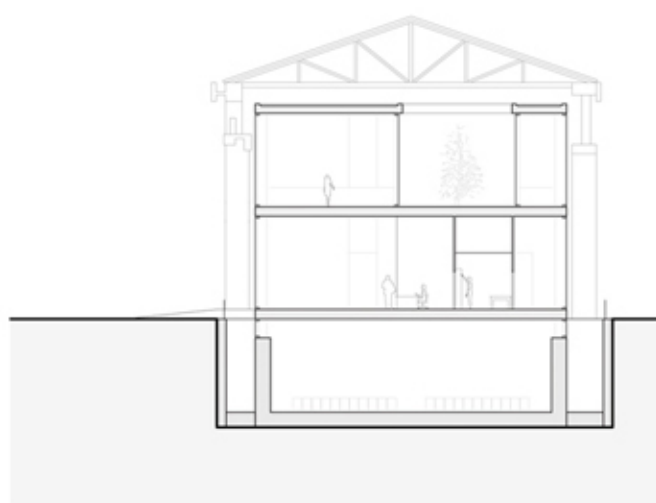
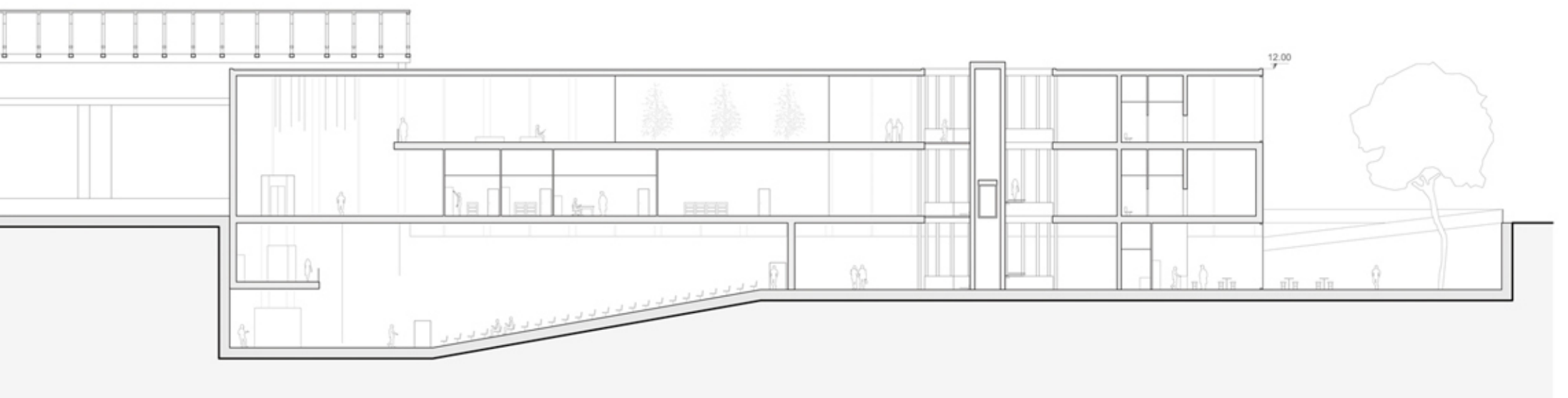
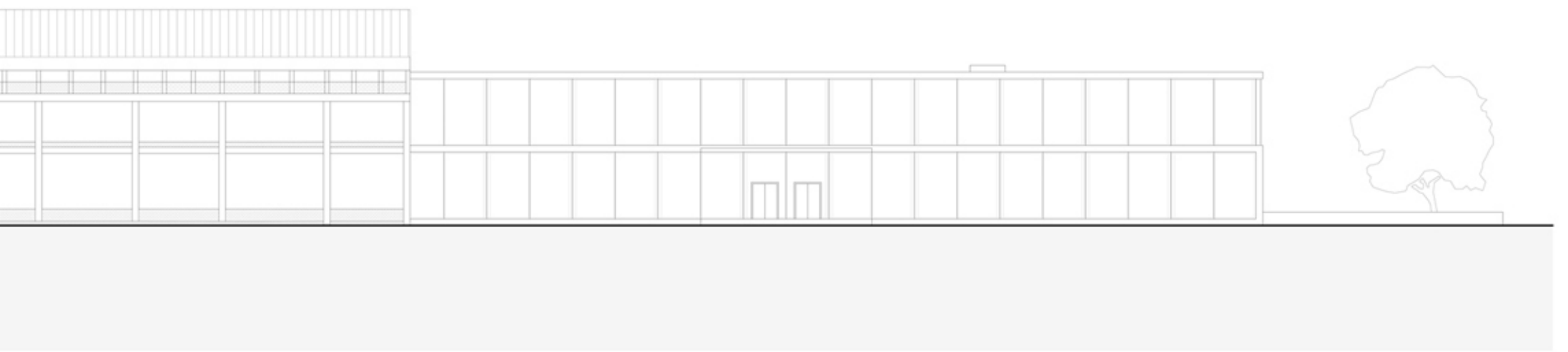
Sezione D-D'

Sezione E-E'



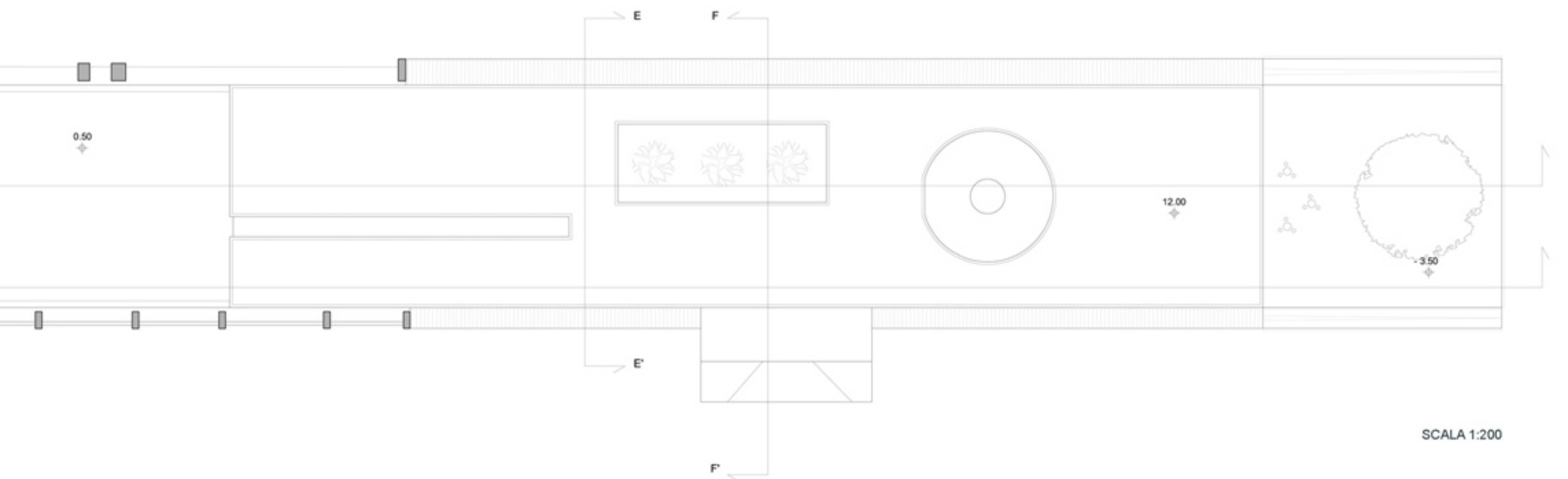
Pianta Coperture



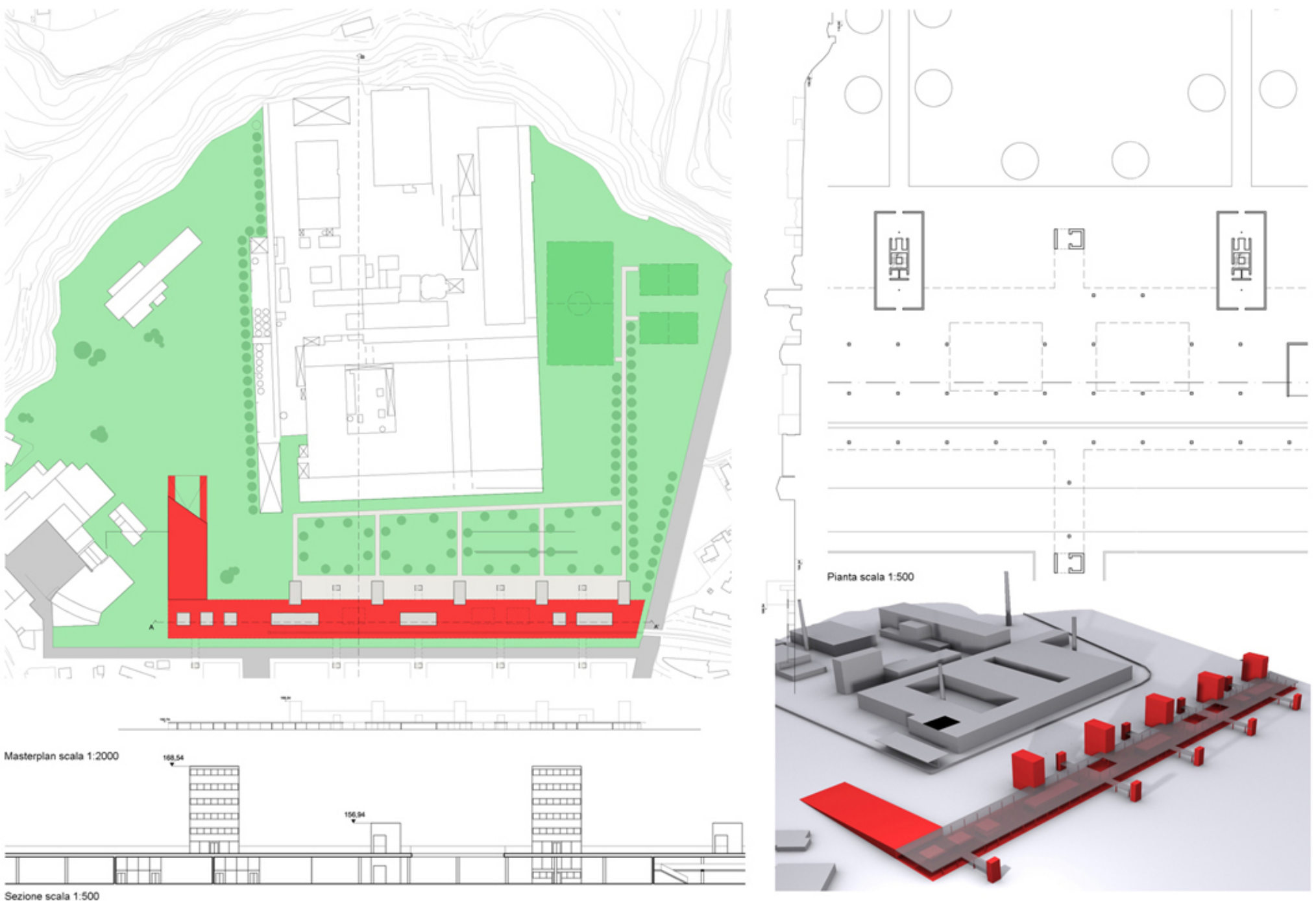
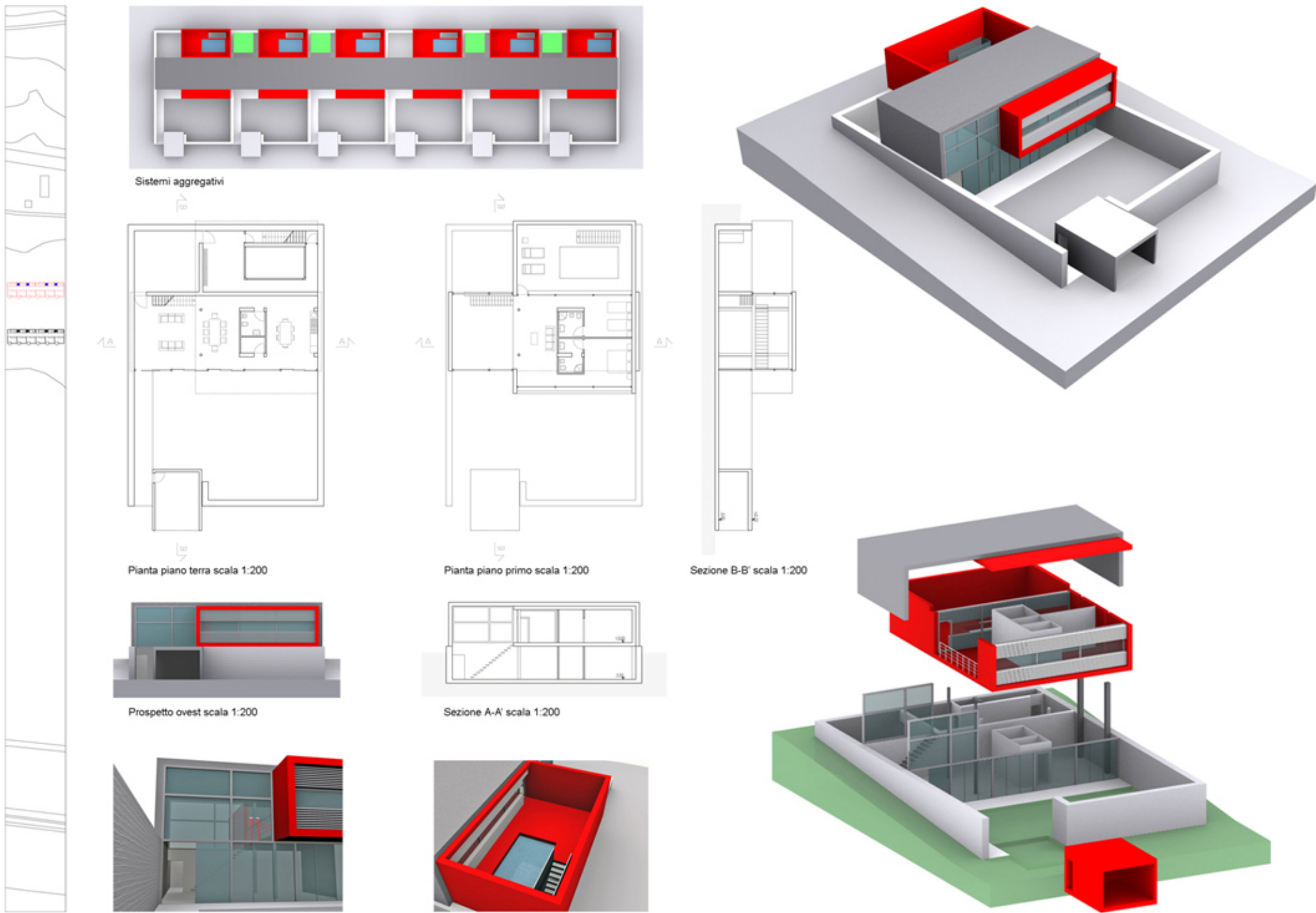


Sezione F-F'

Prospetto Est



SCALA 1:200



UNICAM | Università degli studi di Camerino | Sede collegata di Ascoli Piceno | Corso di laurea in Scienze dell'Architettura | cl 4 | a.a. 2008/2009
 TESI DI LAUREA IN SCIENZE DELL'ARCHITETTURA | Progetto di riconversione dell'area Carbon in polo scientifico e tecnologico
 riqualificazione dei capannoni finiture ovest ed est Tavola 5
 Relatore: prof. Luigi Coccia | Correlatore: prof. Marco D'annuntis | Laureando: Filippo Gibiino |



