



Veduta dal pendio



Planovolumetrico

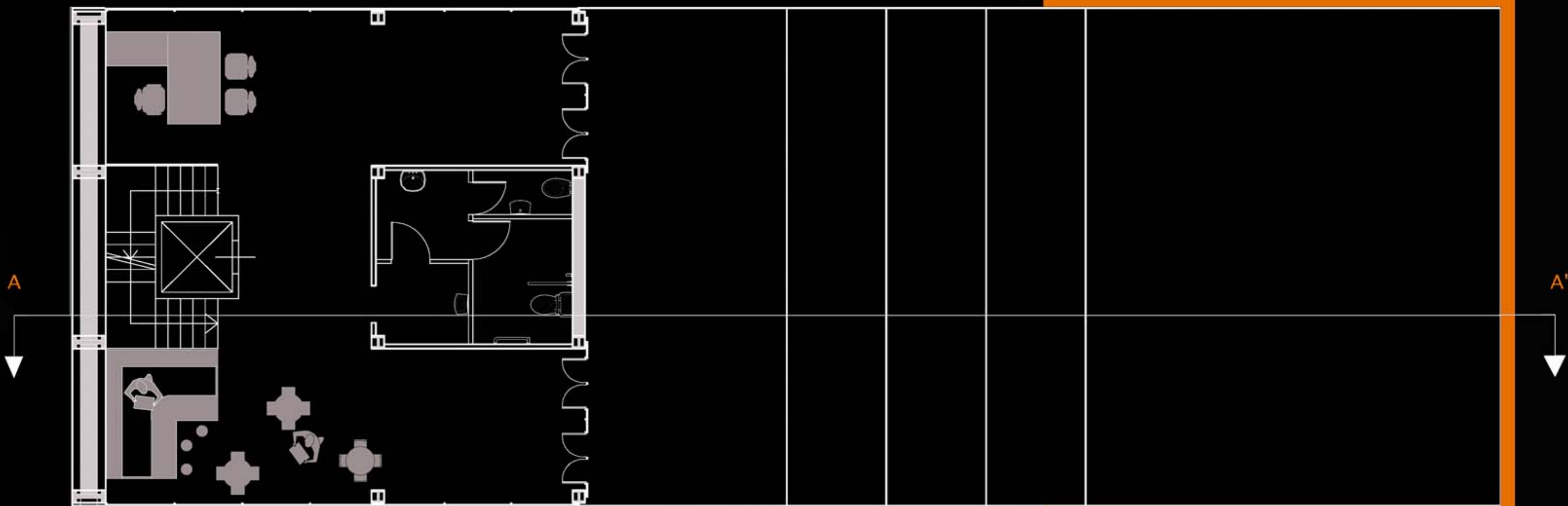


Veduta verso il pendio

VEDUTA VERSO IL PENDIO



Pianta piano terra

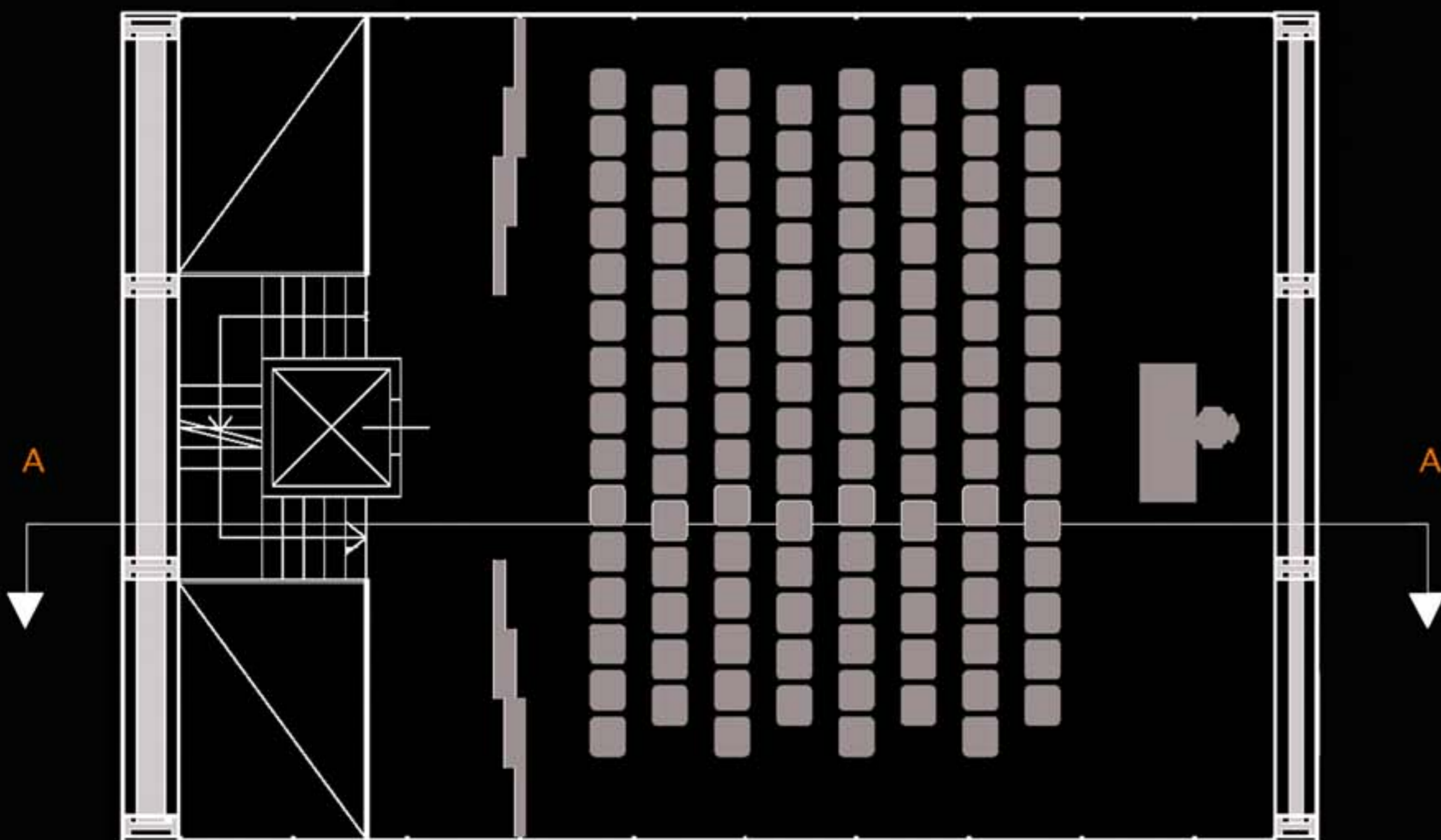


Sezione A-A'

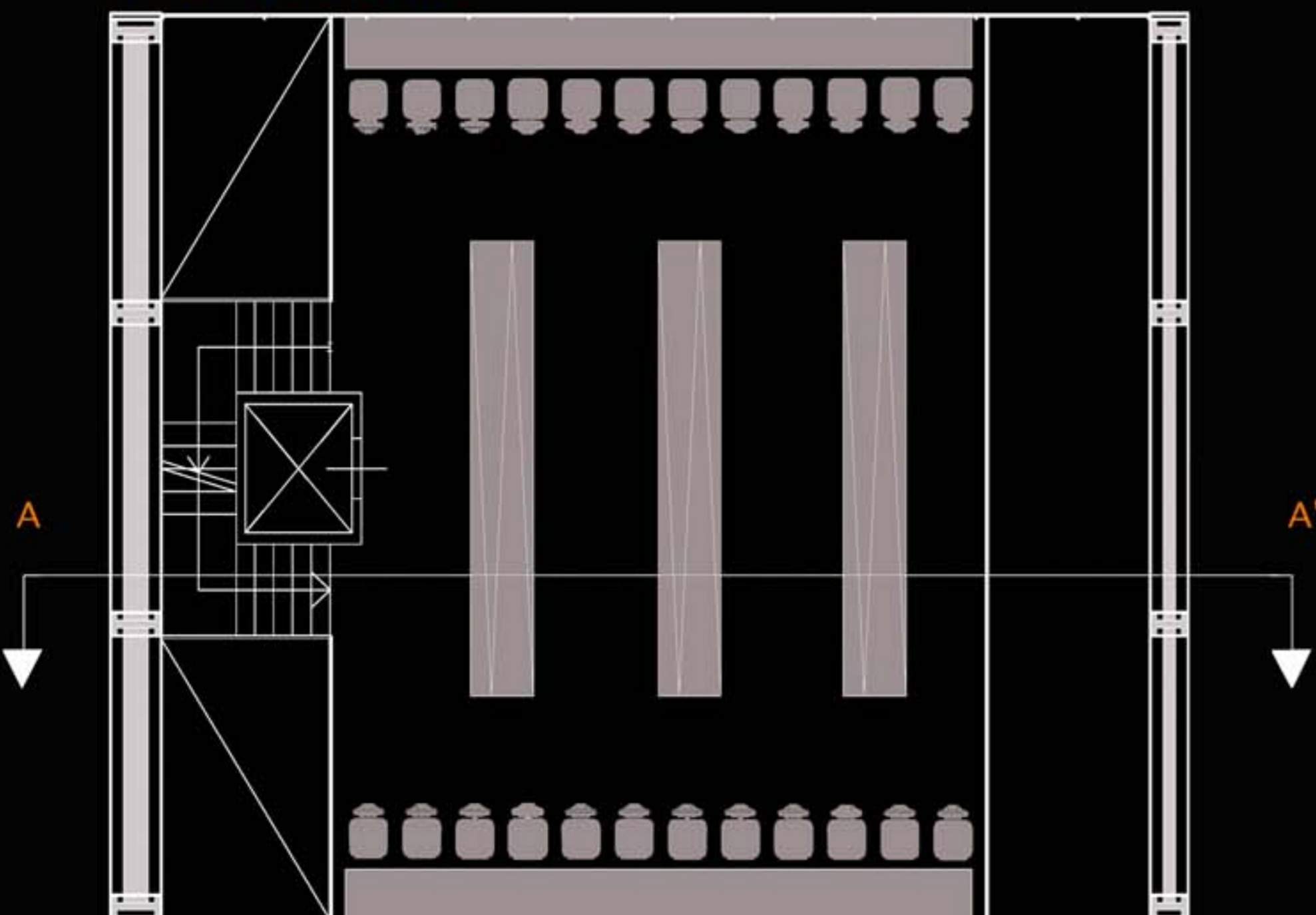
Viste interne

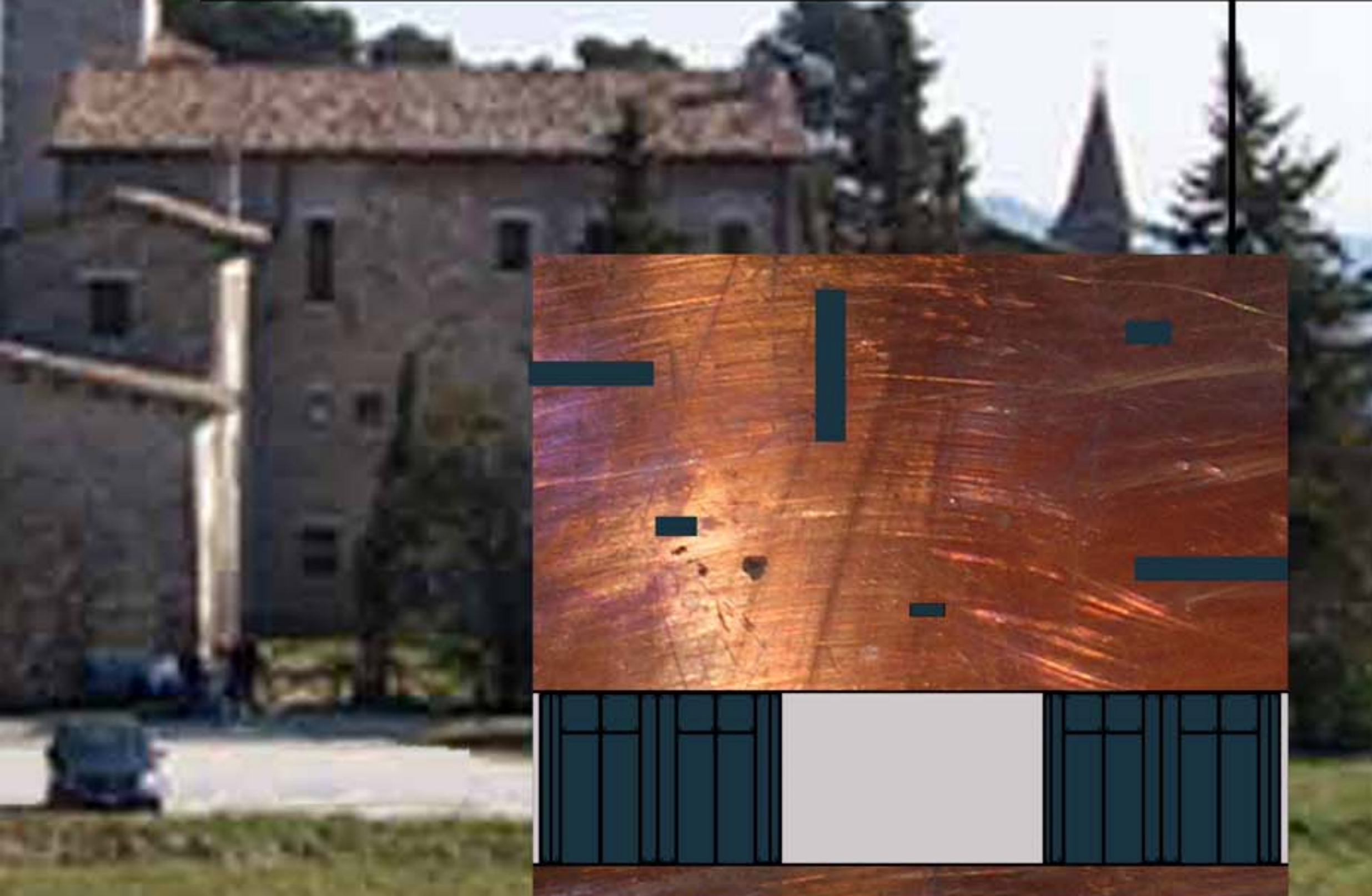
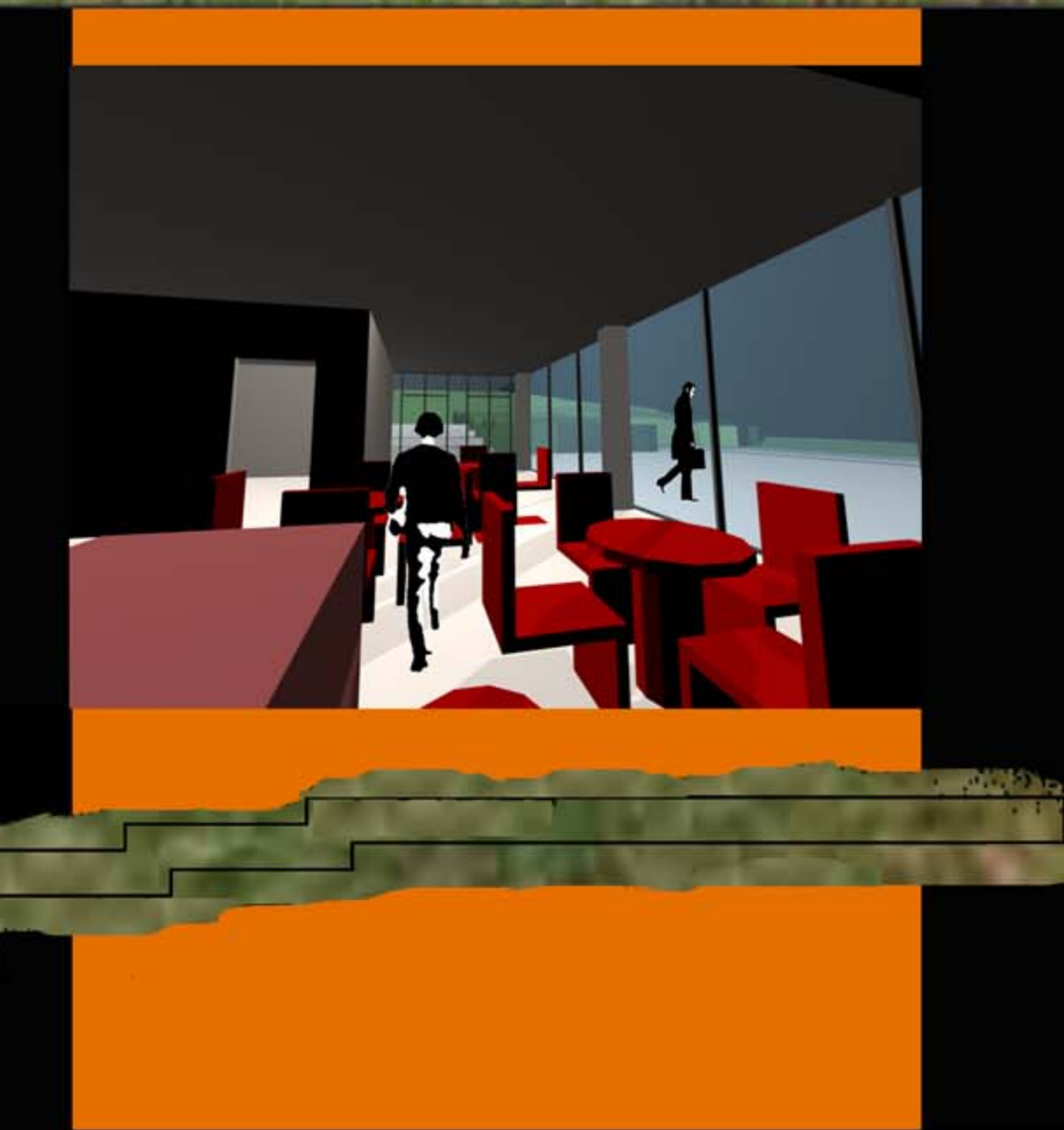
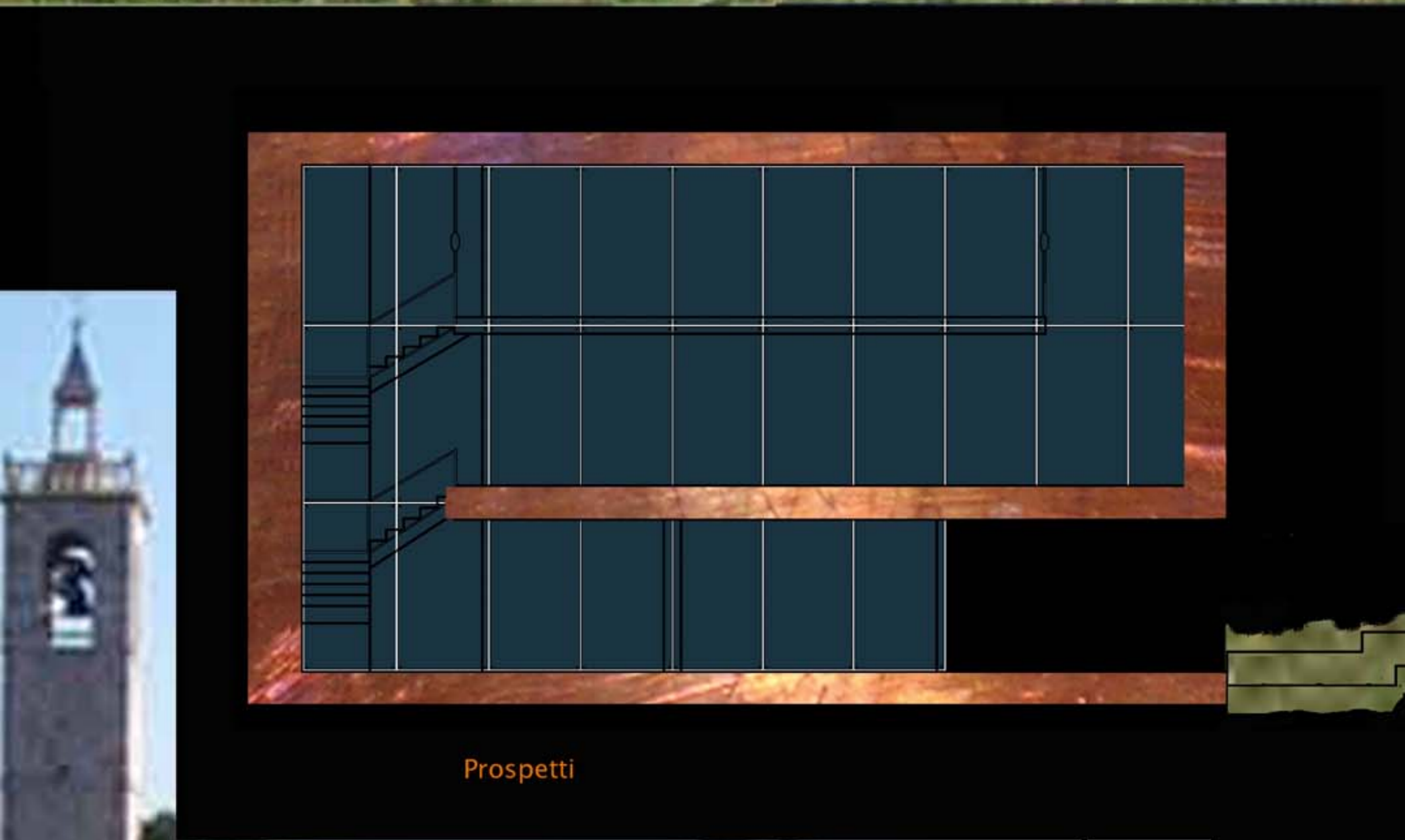


Pianta piano primo

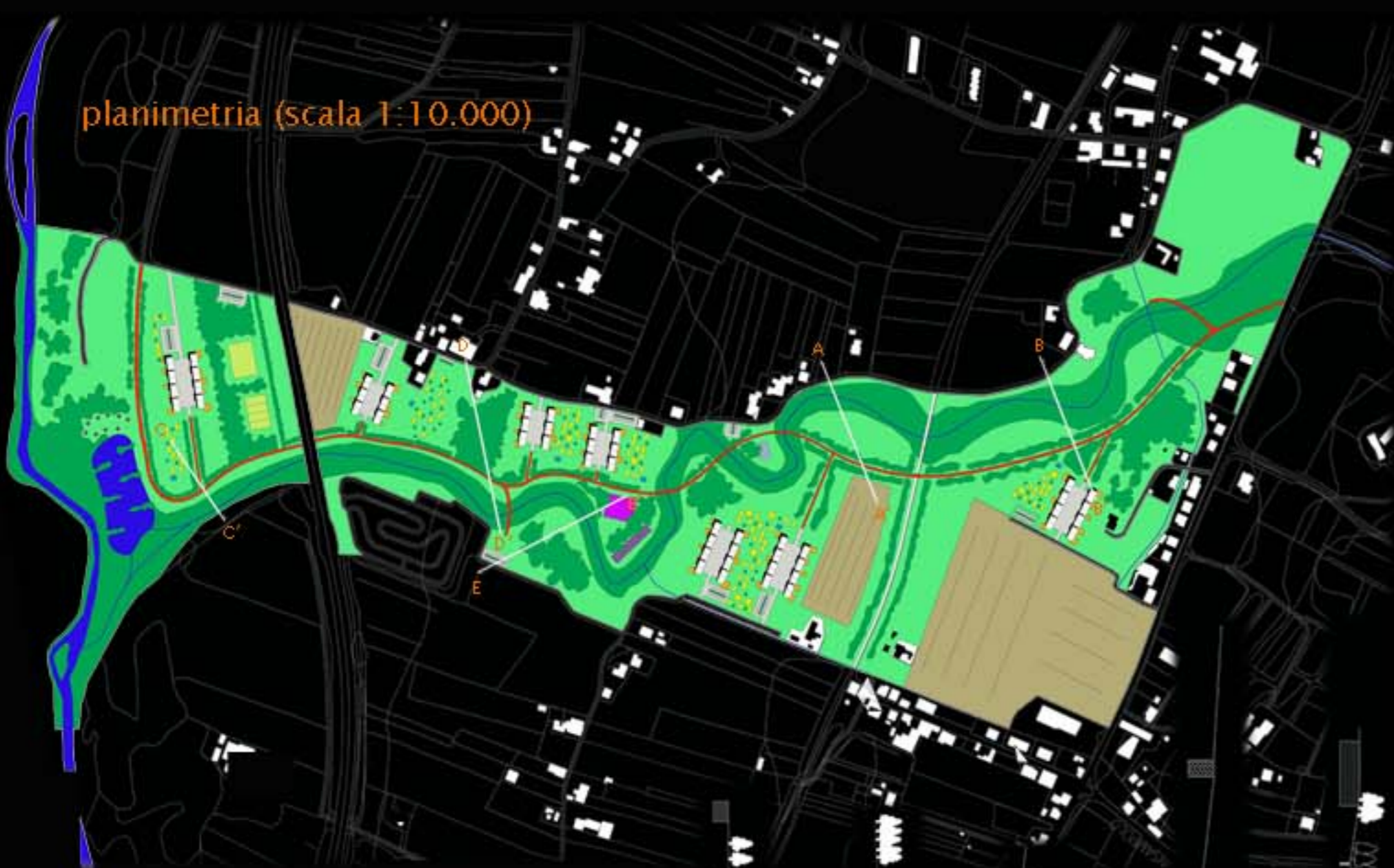
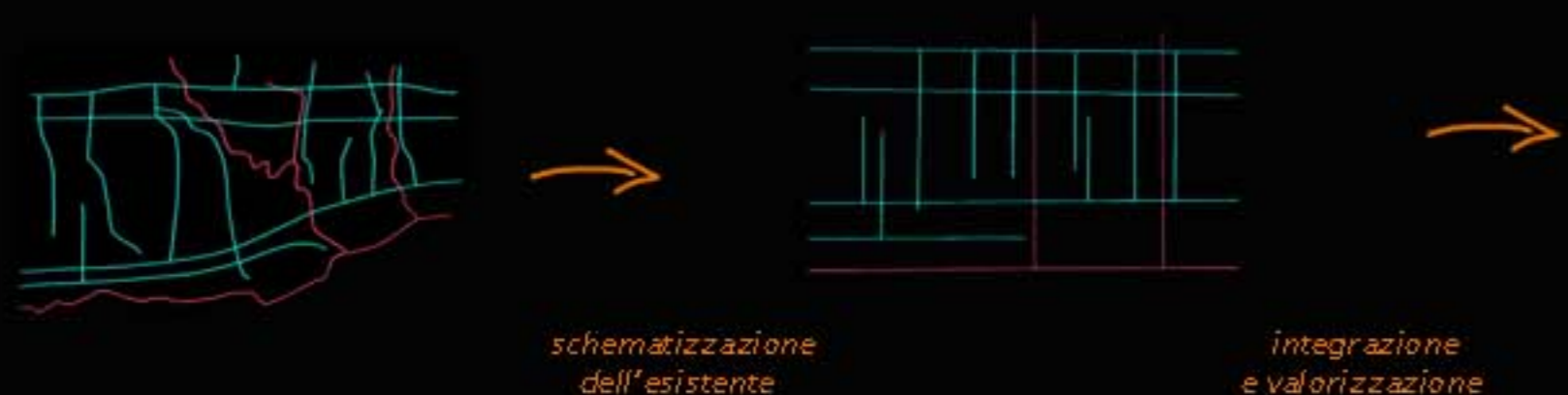


Pianta piano secondo





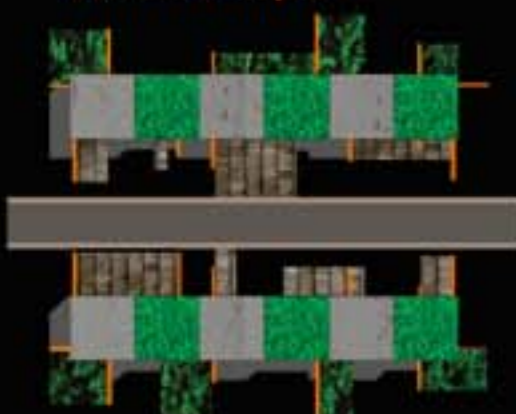
Laboratorio di progettazione urbanistica – a. a. 2003/2004
 Prof. Arch. Chiara Merlini



LEGENDA

- prato
- vegetazione fitta
- spazio attrezzato con pavimentazione in resina
- esistente
- spazio attrezzato con pavimentazione di sabbia
- orti
- ricovero attrezzi
- fabbricati di nuova edificazione
- strade e parcheggi
- giardini
- seminativi
- verde sportivo
- pista ciclabile
- vasca di depurazione
- spazio attrezzato con pavimentazione in legno
- spazio attrezzato con pavimentazione in metallo

isolato tipo



Laboratorio di fondamenti della progettazione – a. a. 2002/2003
 Prof. Arch. Umberto Cao



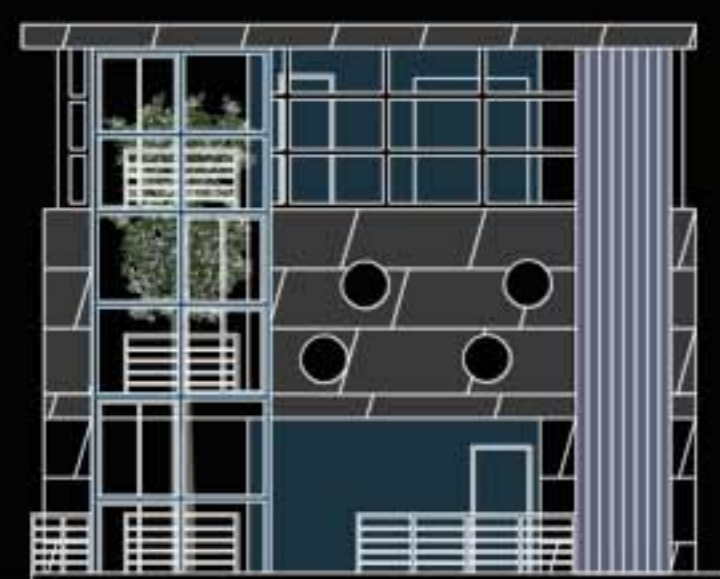
pianta piano terra



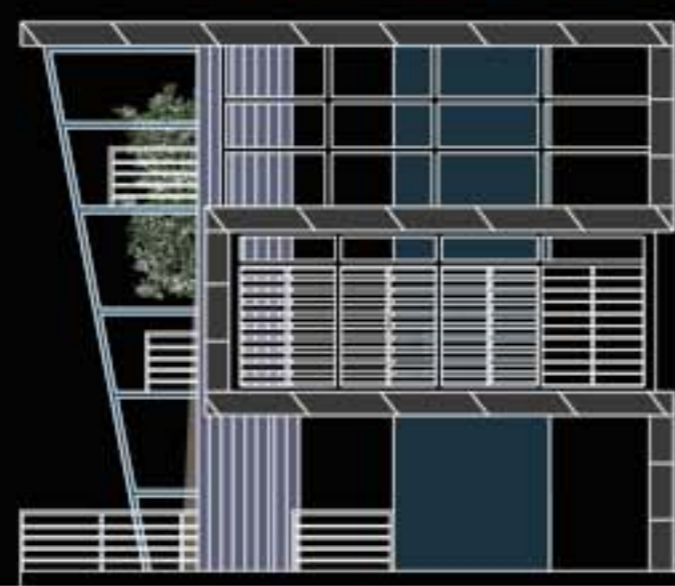
pianta piano primo



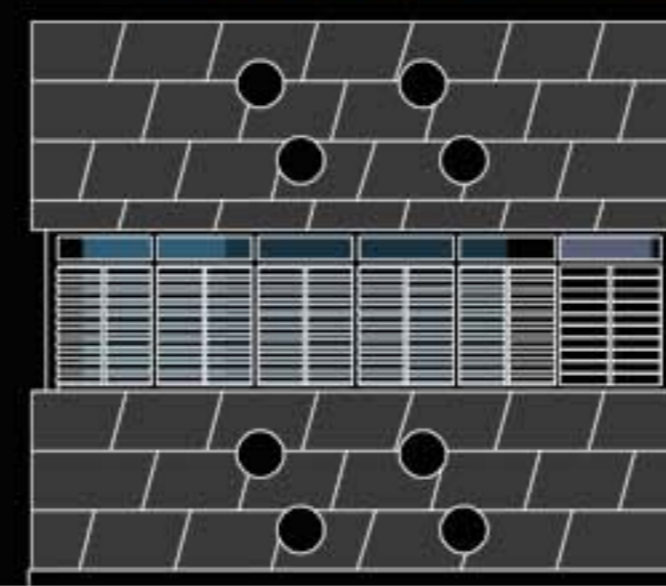
pianta piano secondo



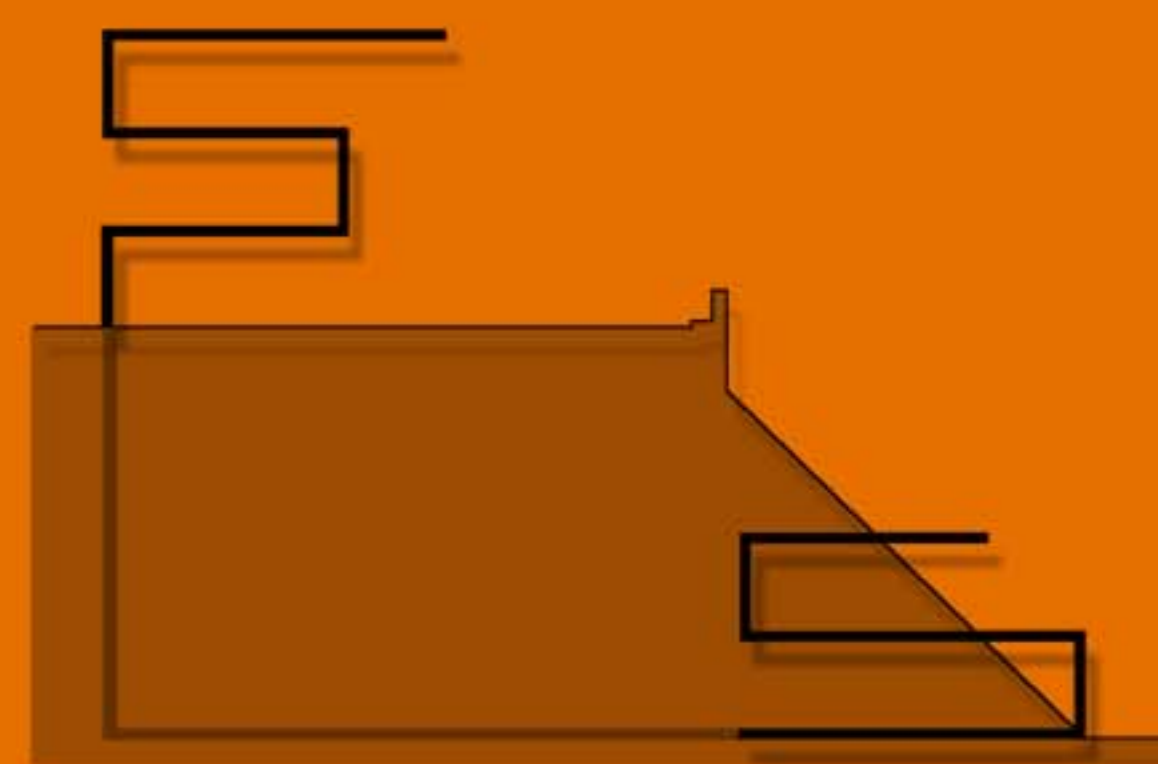
prospetto nord



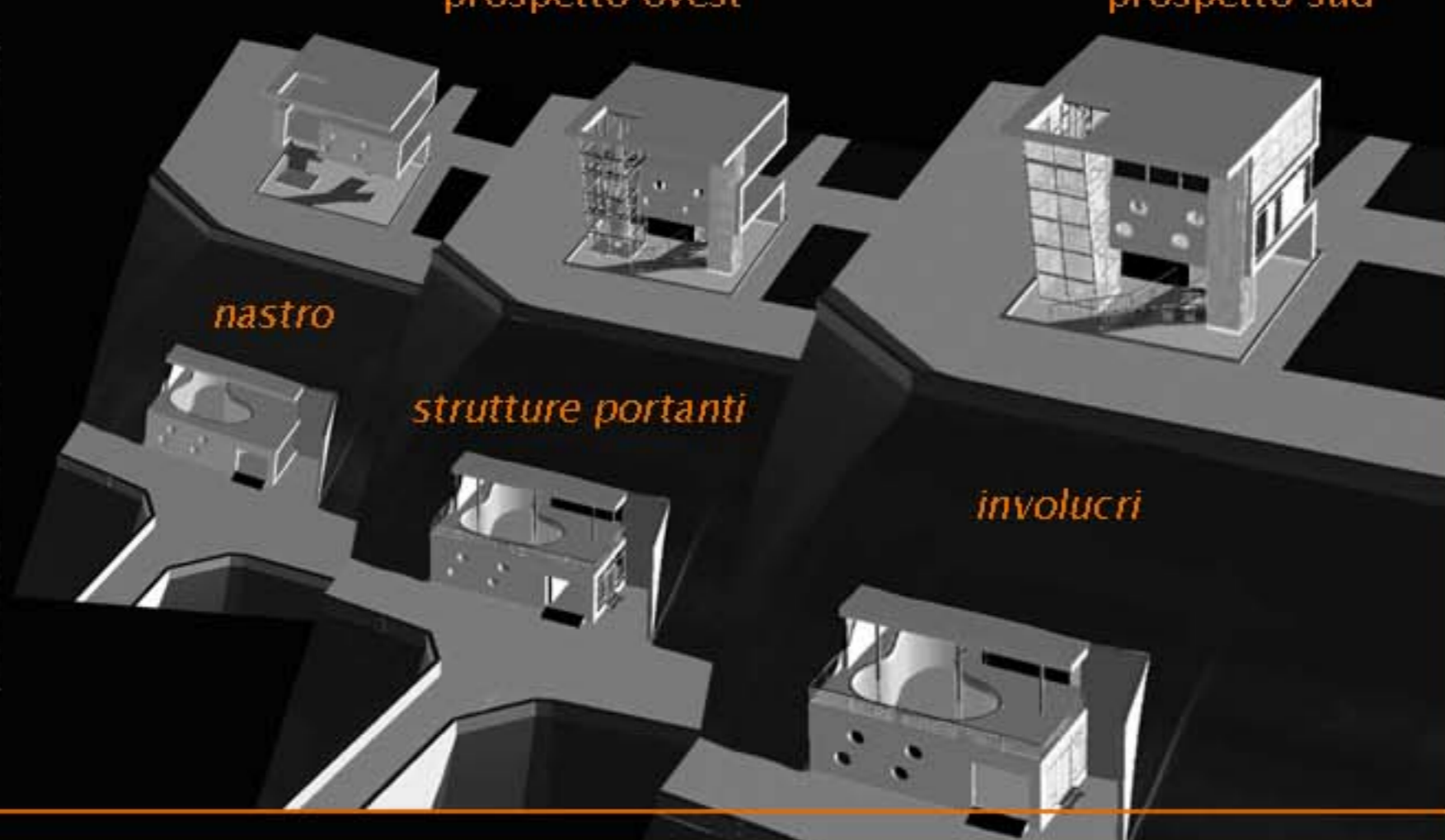
prospetto ovest



prospetto sud



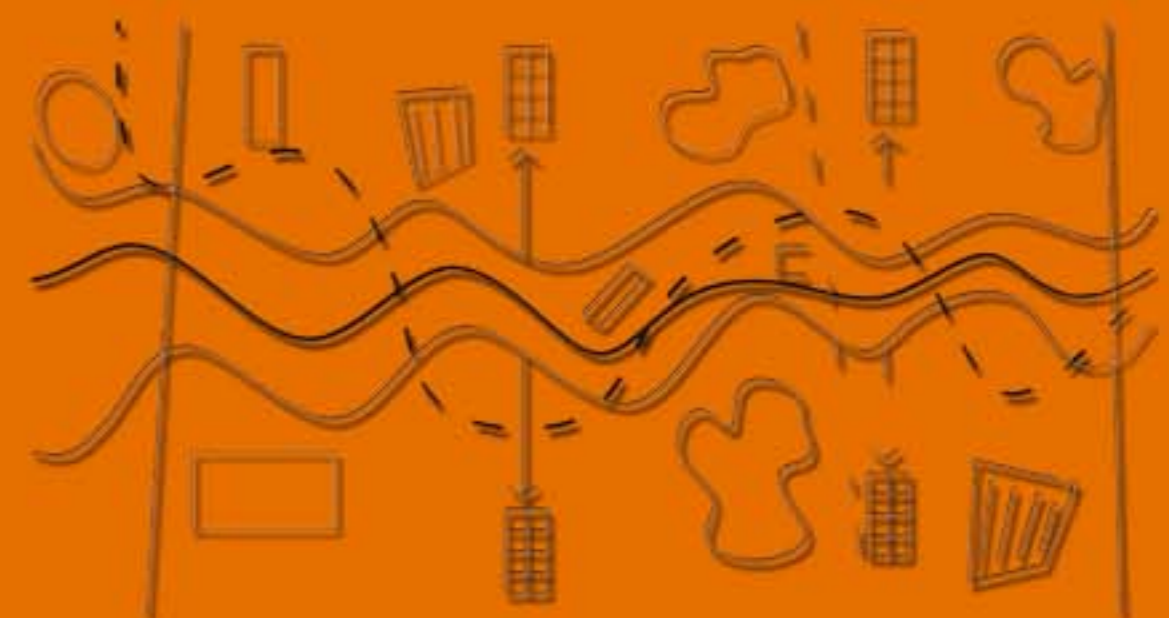
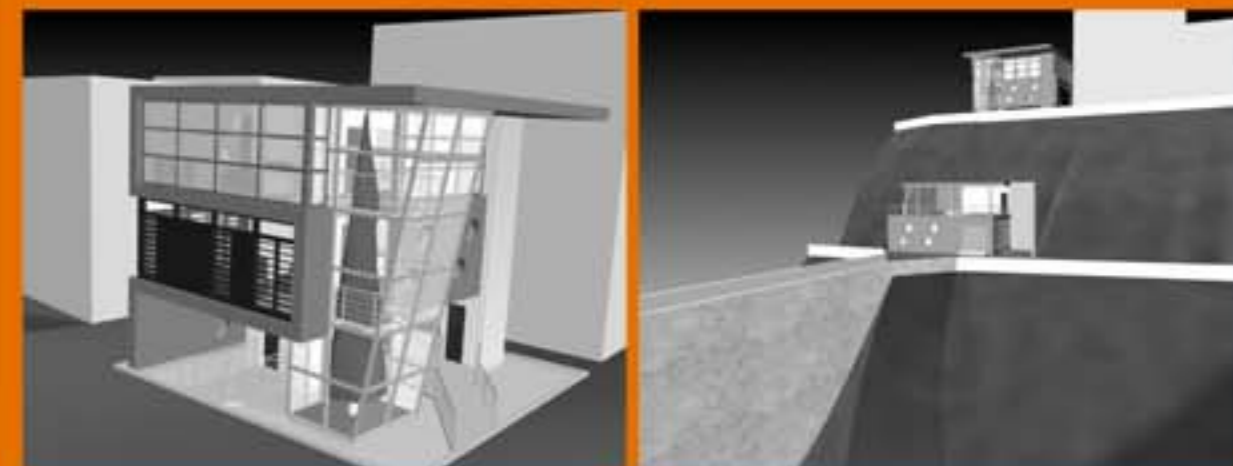
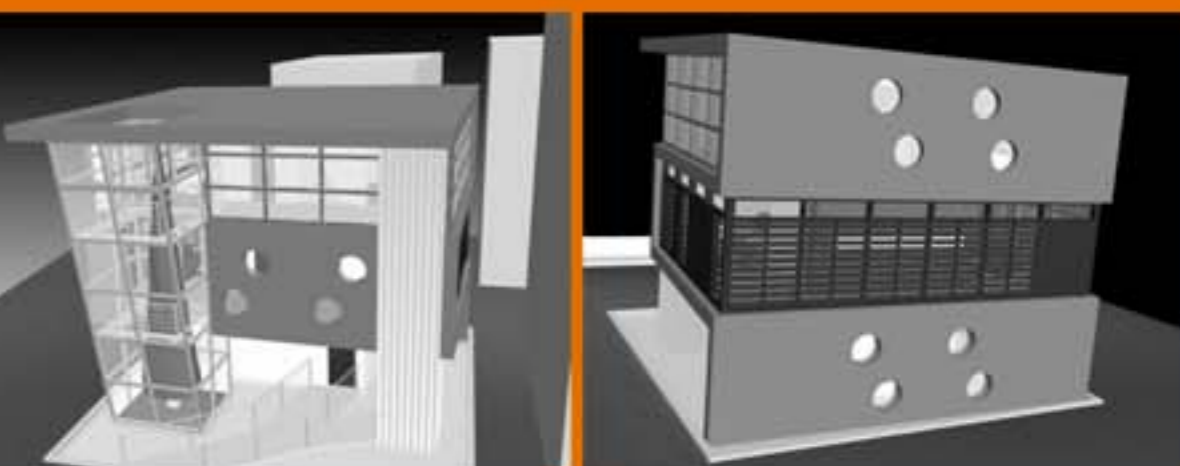
idea di un nastro continuo



nastro

strutture portanti

involucri



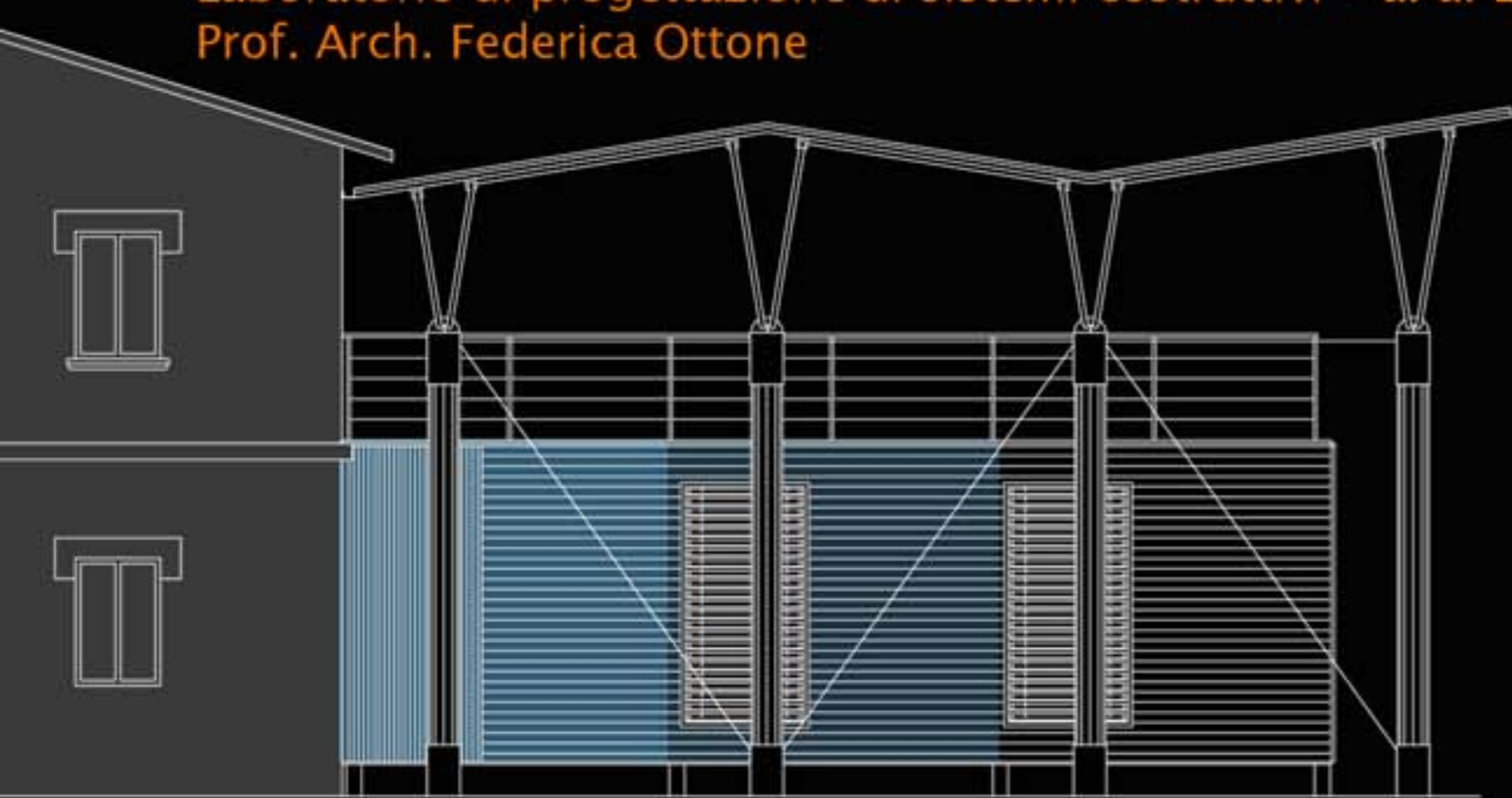
ideogramma



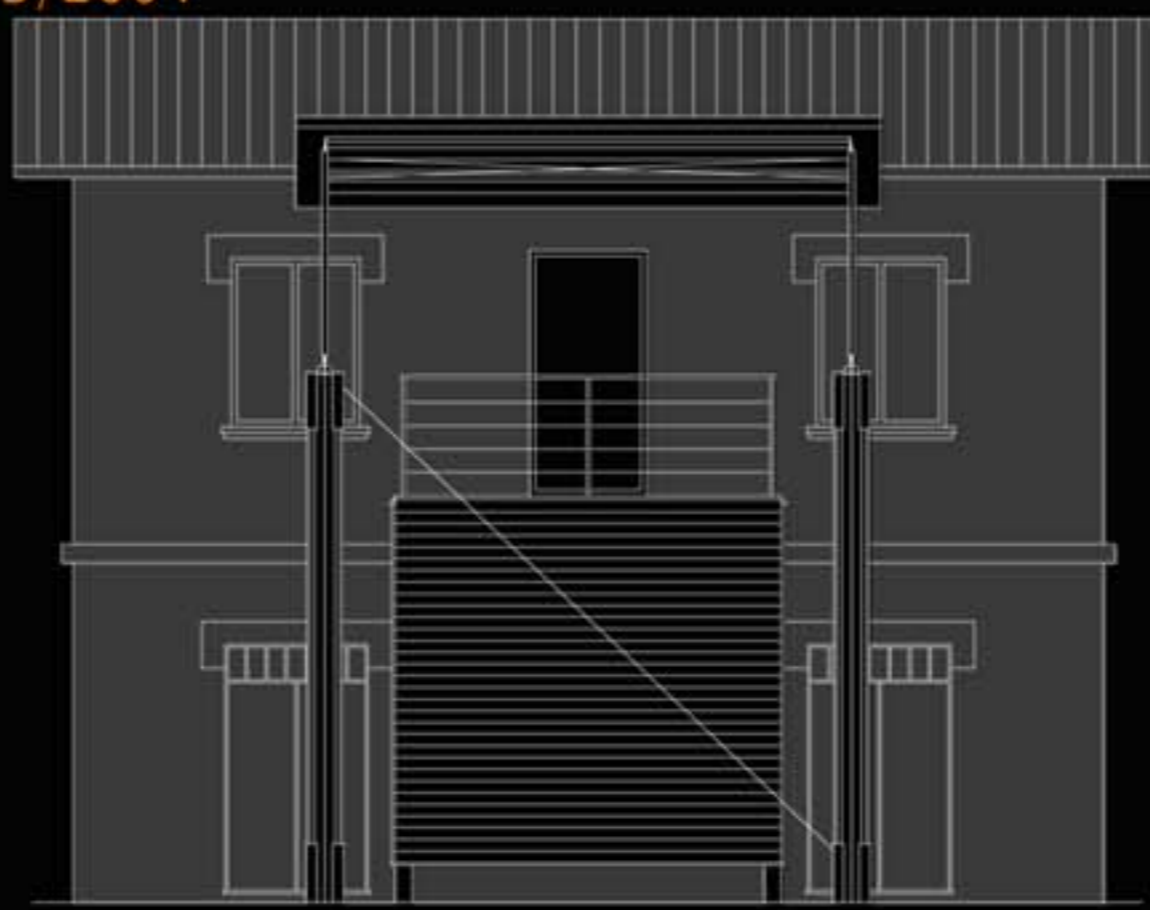
viste del parco



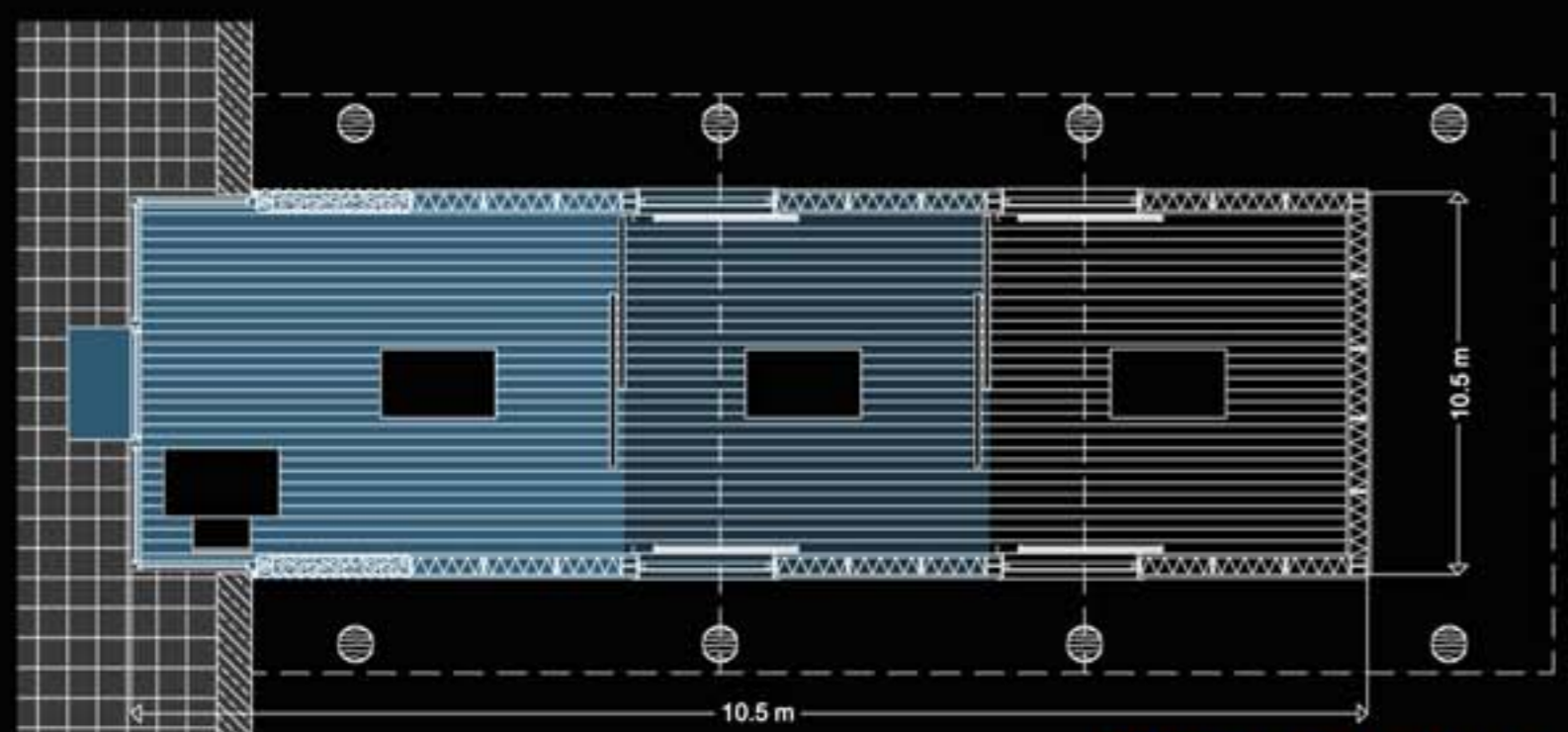
Laboratorio di progettazione di sistemi costruttivi – a. a. 2003/2004
Prof. Arch. Federica Ottone



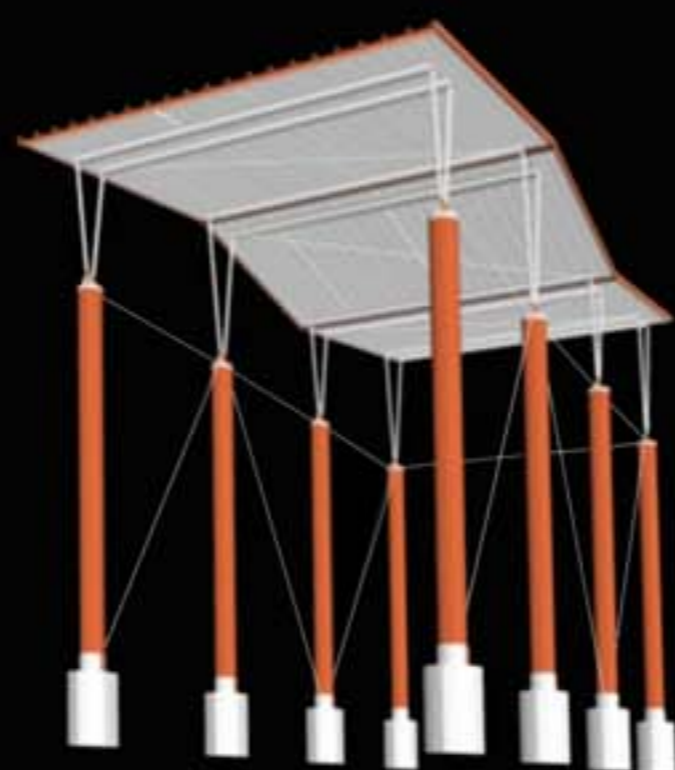
prospetto ovest



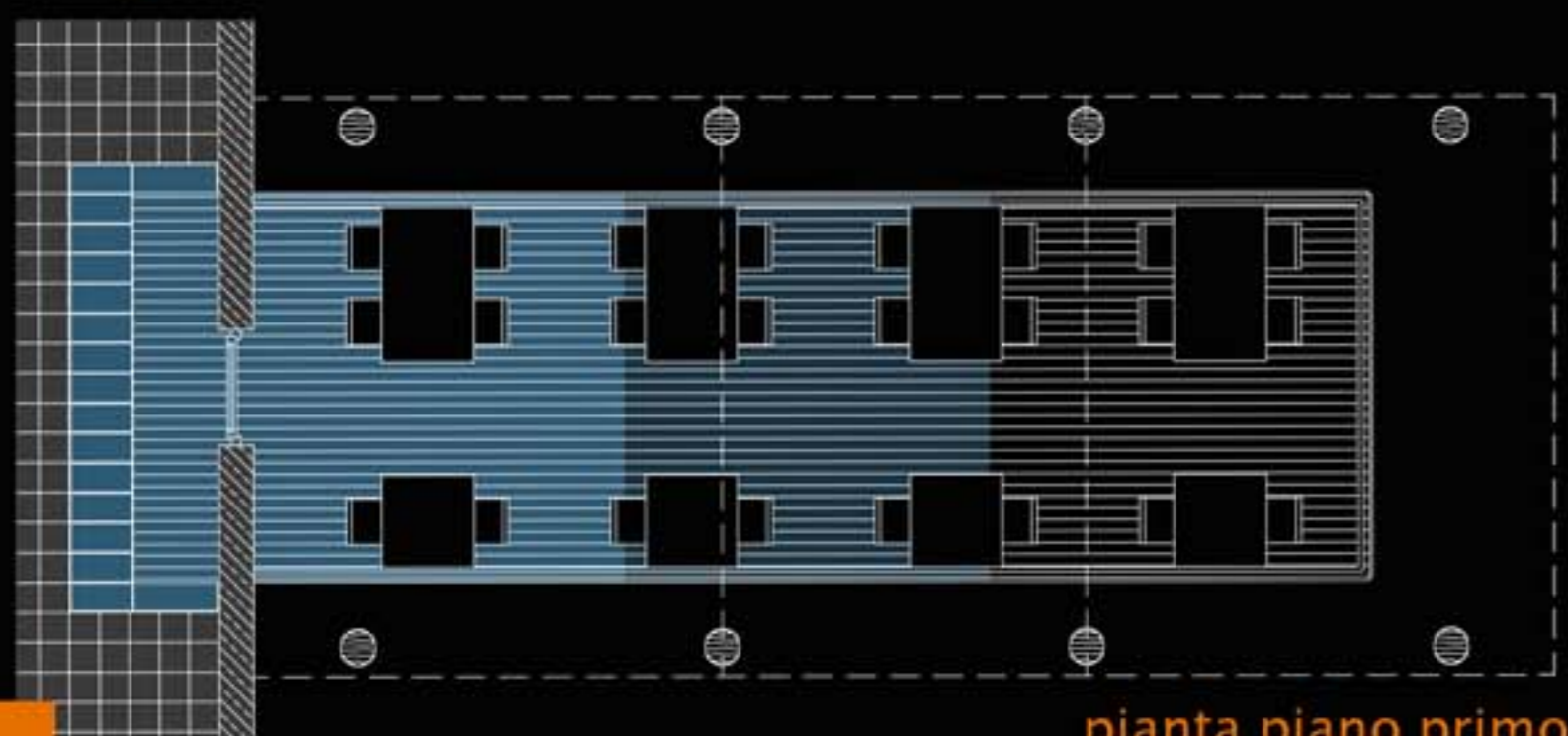
prospetto sud



pianta piano terra



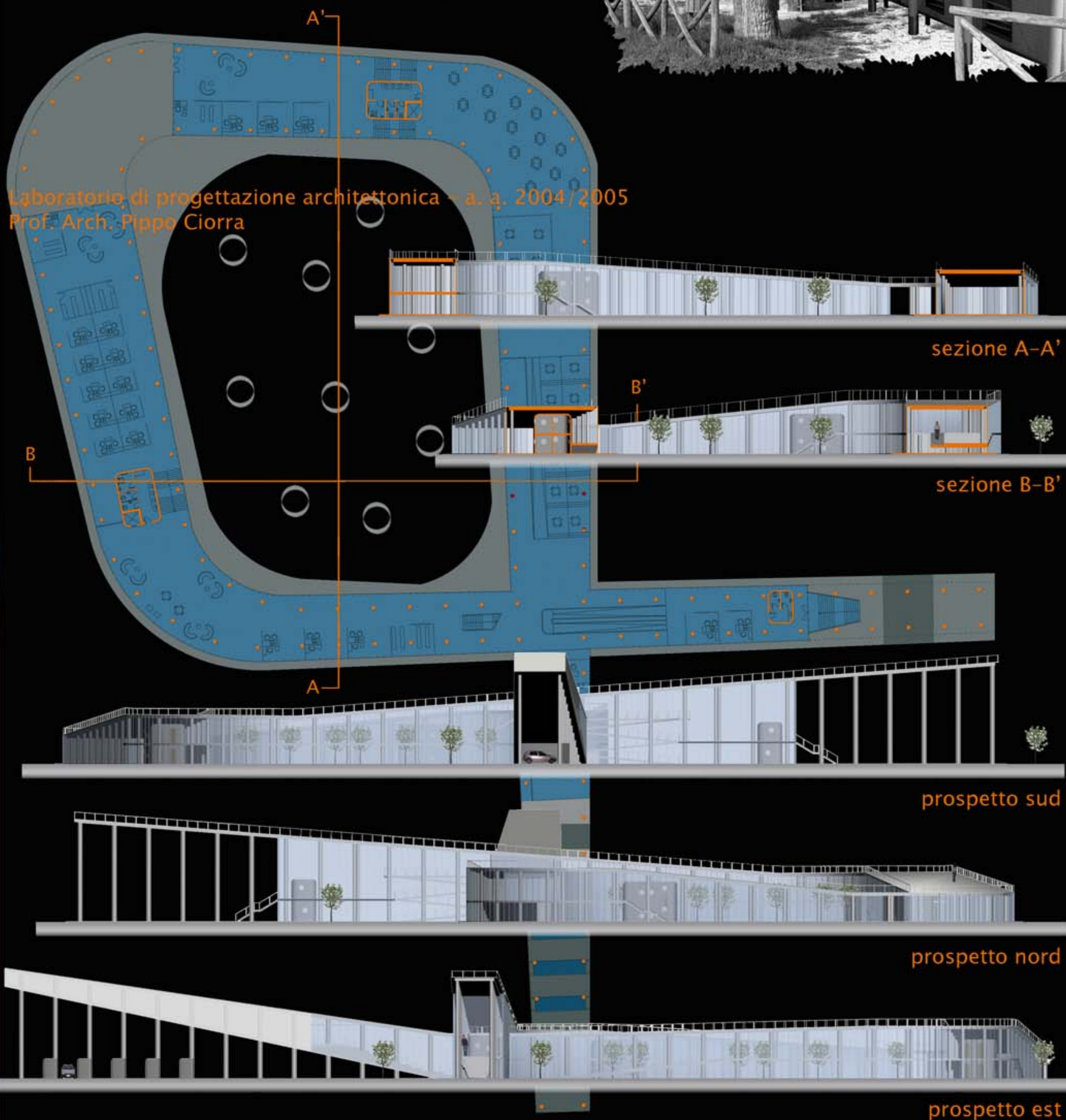
vista della copertura



pianta piano primo



Laboratorio di progettazione architettonica – a. a. 2004/2005
Prof. Arch. Pippo Ciorra



sezione A-A'

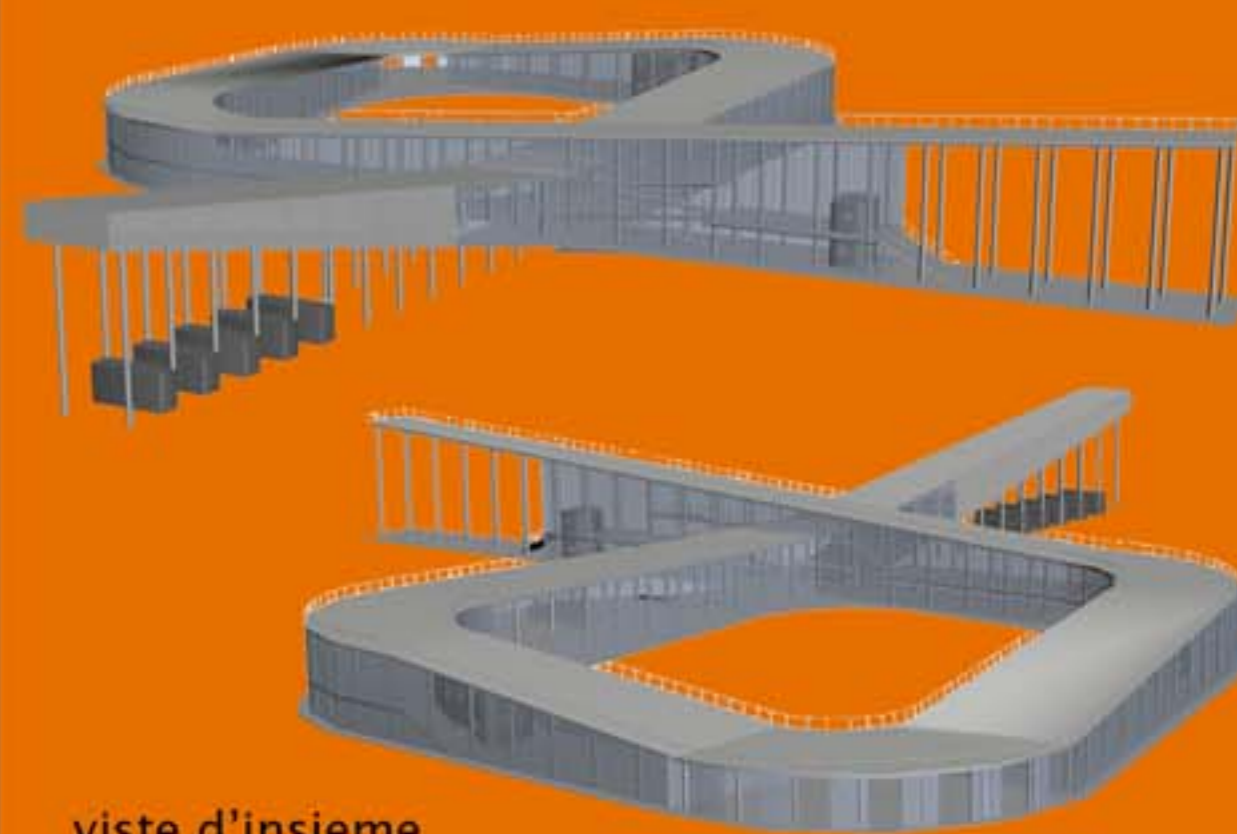
sezione B-B'

prospetto sud

prospetto nord

prospetto est

fasi di montaggio



viste d'insieme



viste interne

