

Pianta vuoti



Pianta pieni

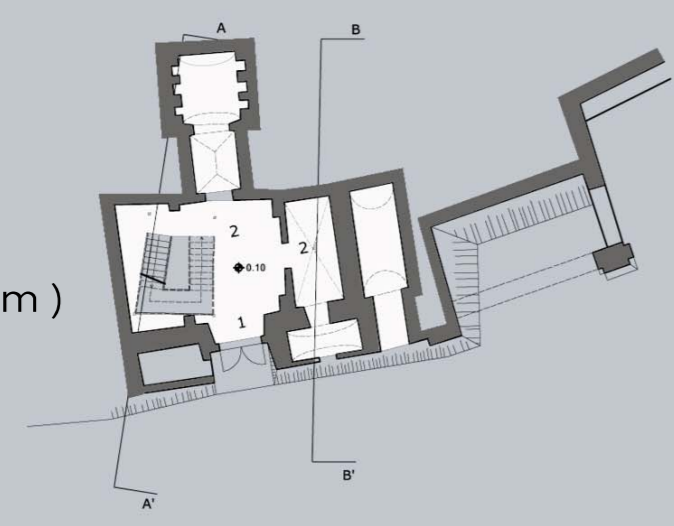


Pianta piani terra

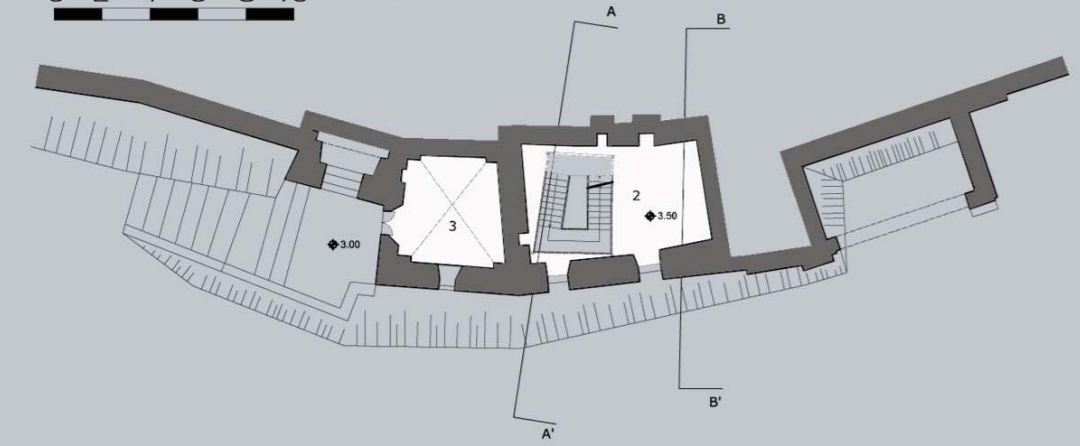




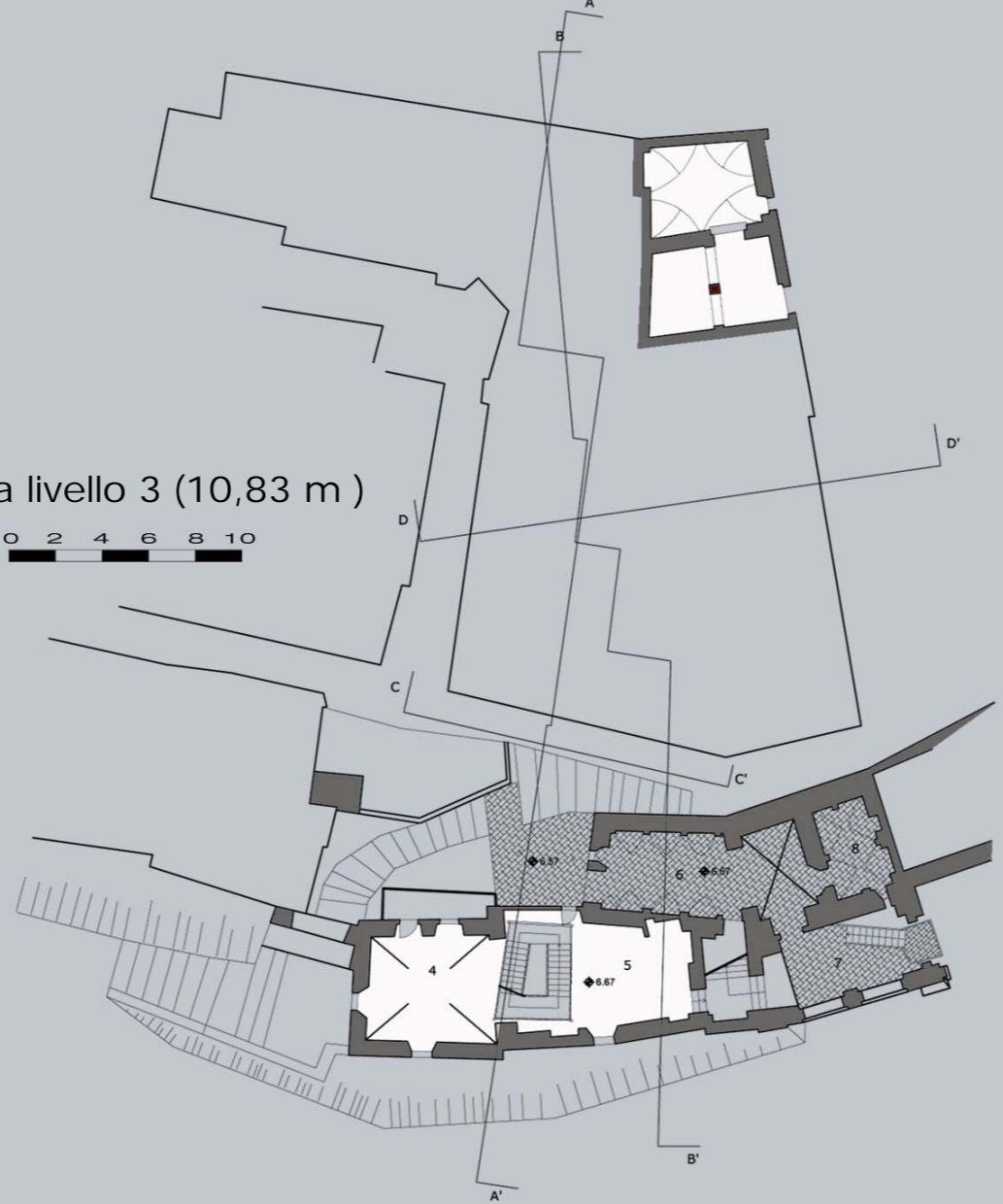
Pianta livello 1 (0,90 m)



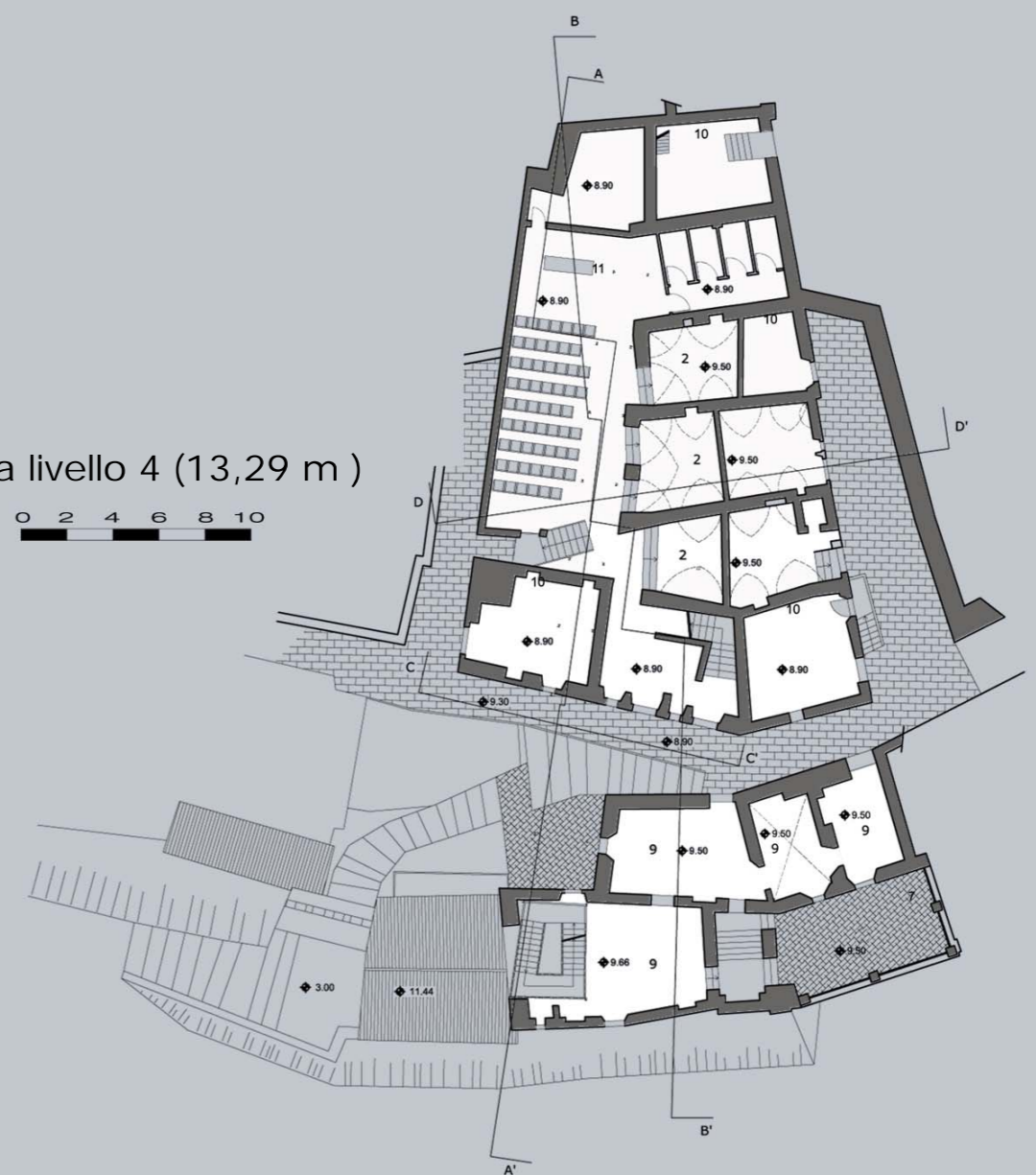
Pianta livello 2 (6,70 m)



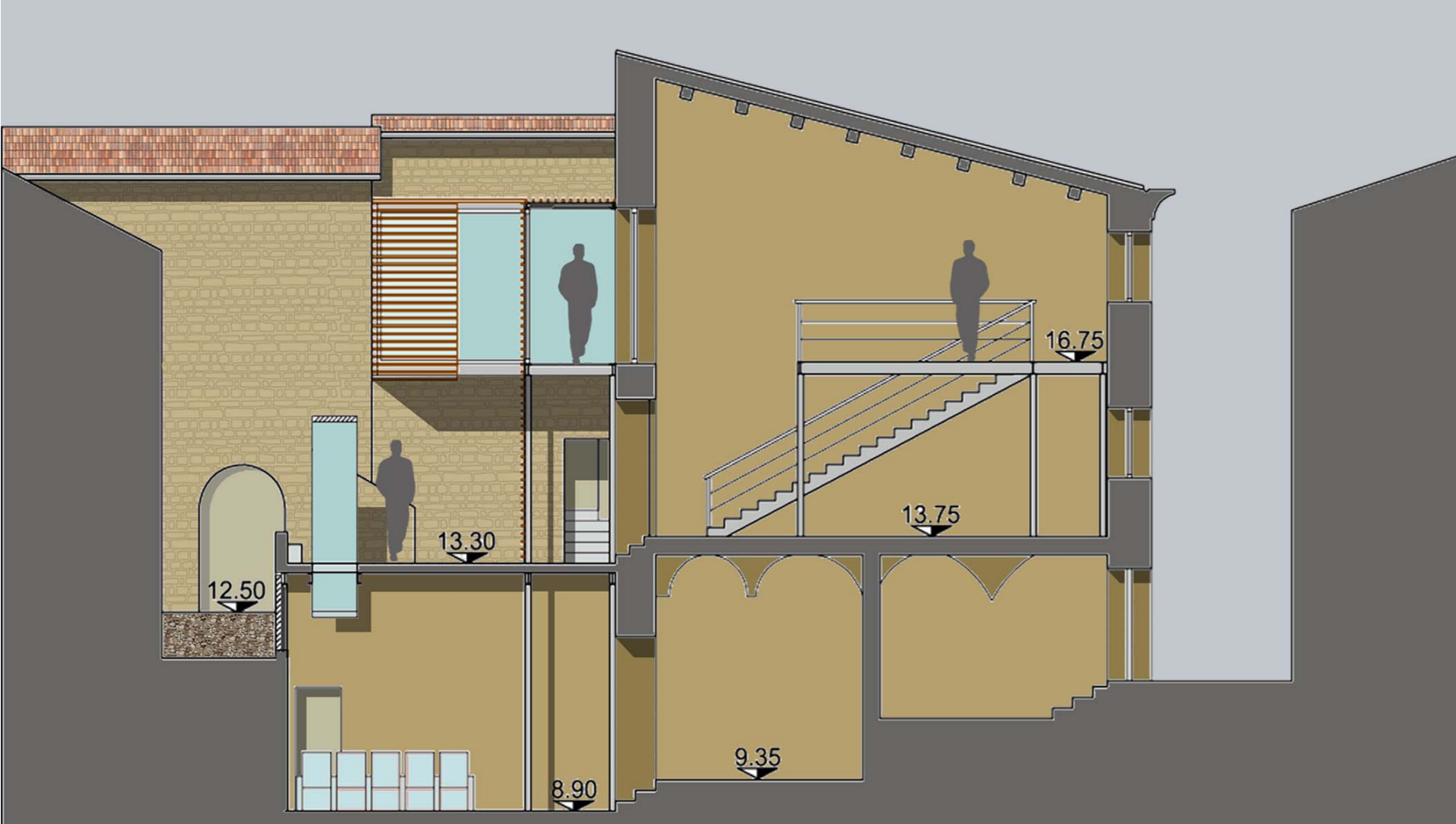
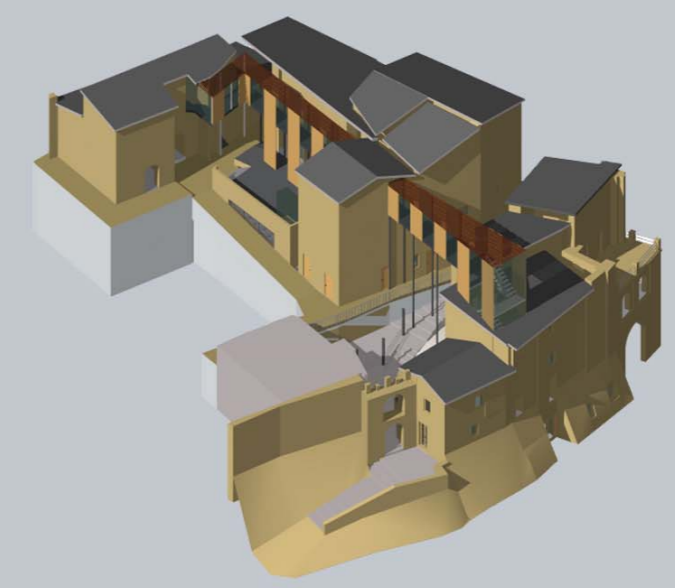
Pianta livello 3 (10,83 m)



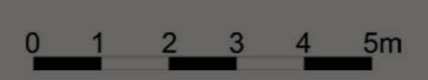
Pianta livello 4 (13,29 m)



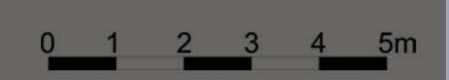
- 1 Ingresso - 2 Sale espositive multimediali - 3 Shop - 4 Bar del museo - 5 Ingresso al museo - 6 Percorso pubblico - 7 Terrazza panoramica - 8 Book shop - 9 Sala espositiva - 10 Botteghe



SEZIONE D - D'



PROSPETTO SUD - OVEST





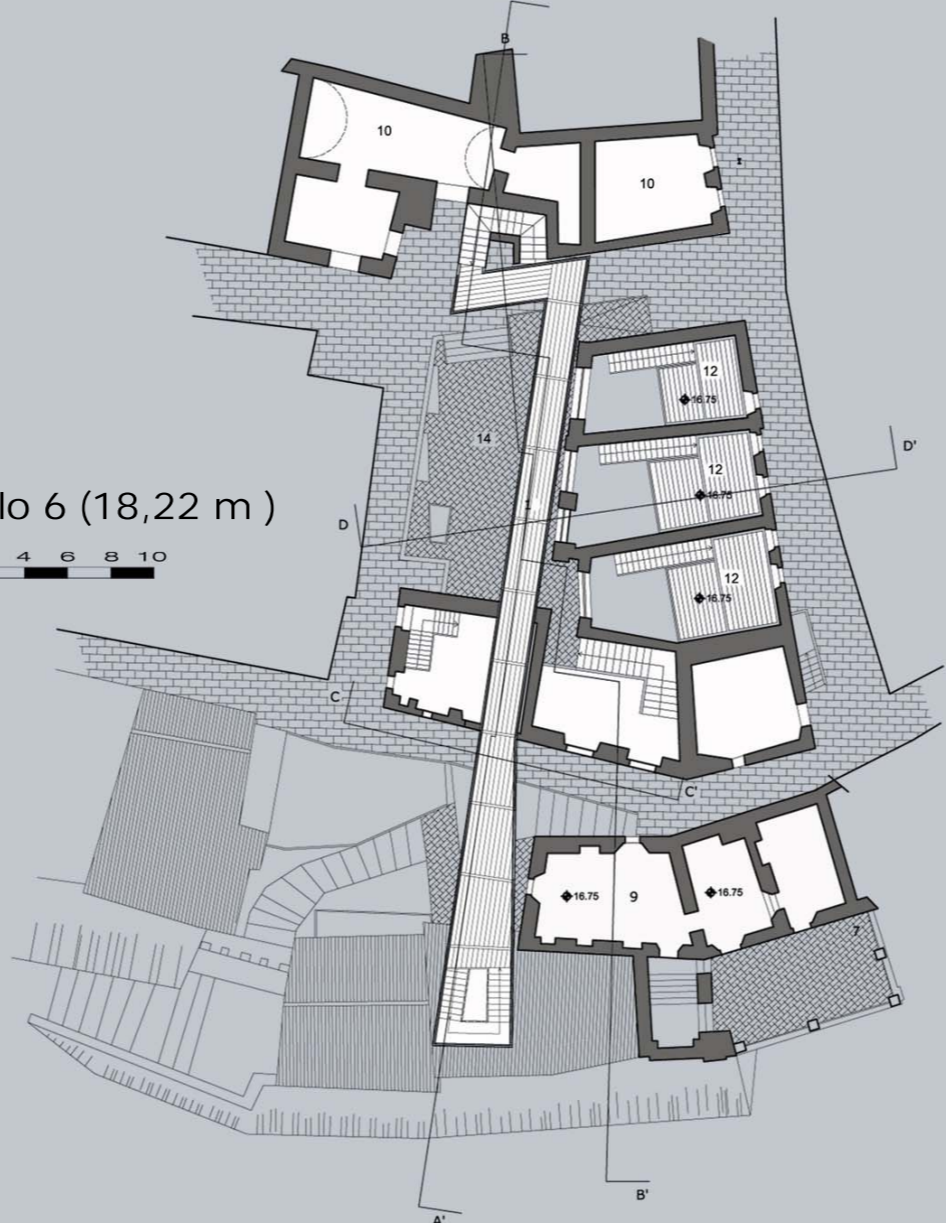
Pianta livello 5 (15,76 m)

0 2 4 6 8 10



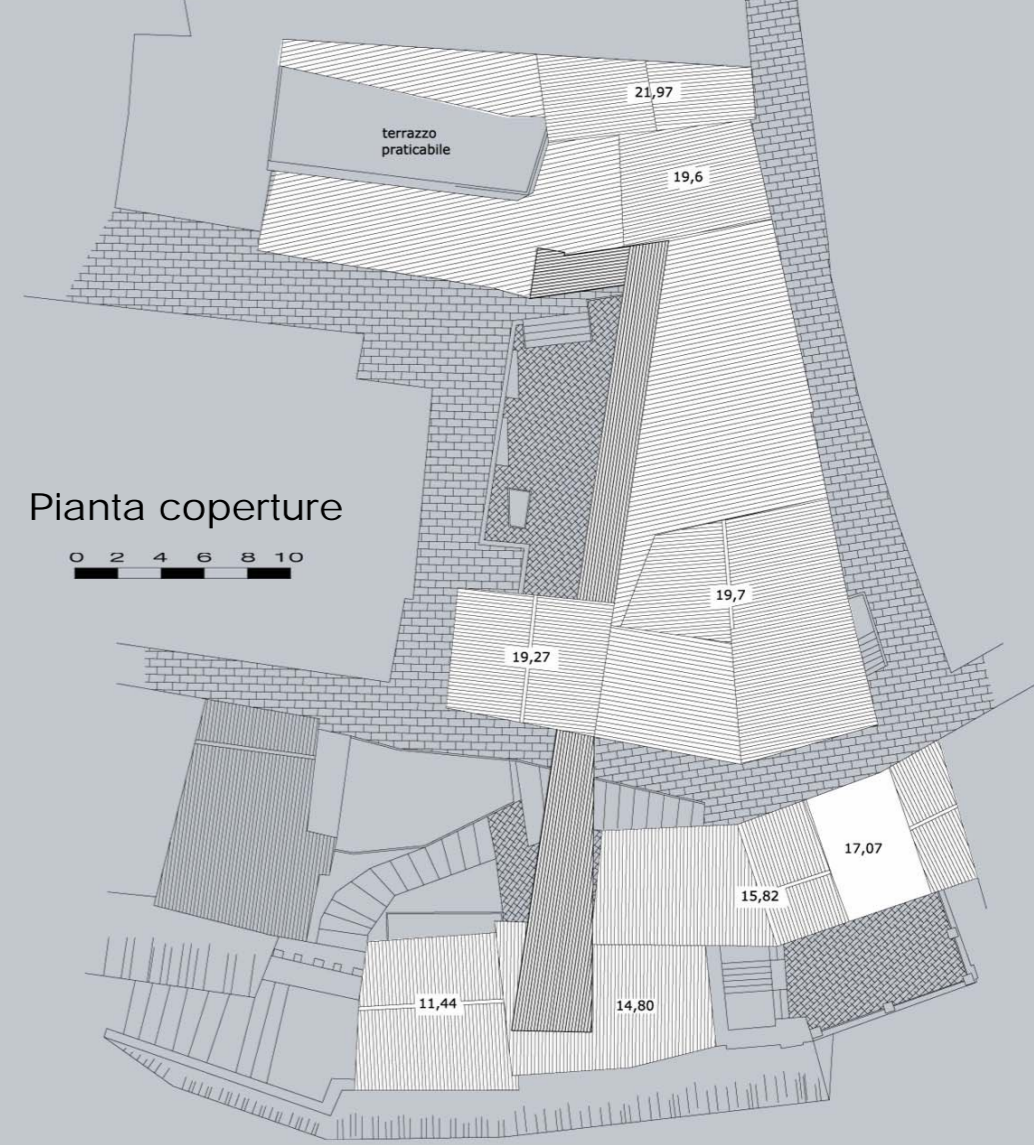
Pianta livello 6 (18,22 m)

0 2 4 6 8 10

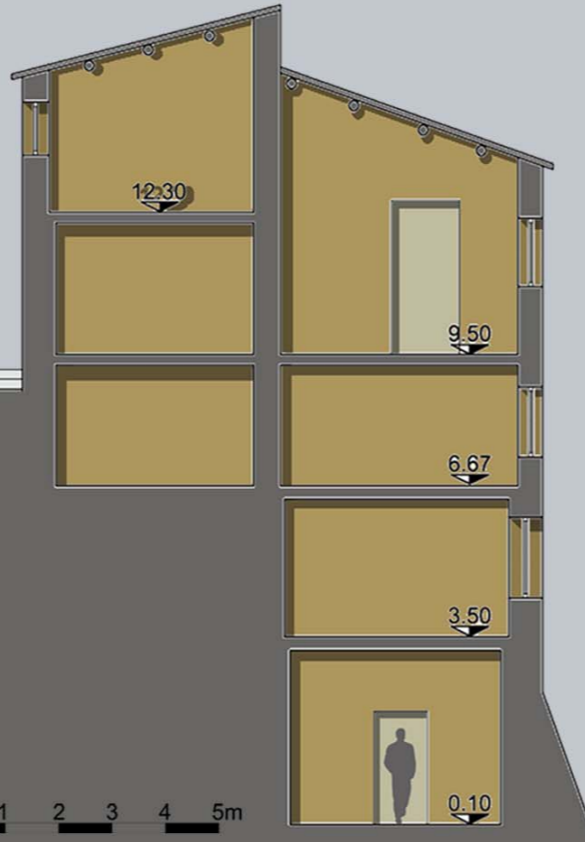
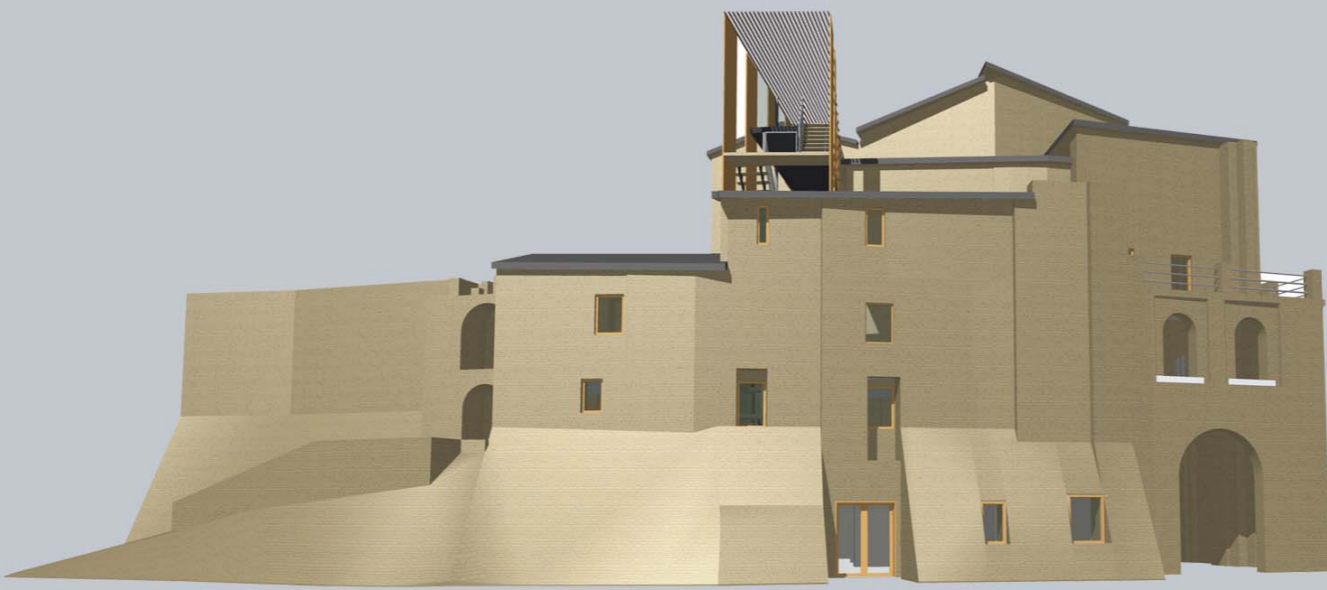


Pianta coperture

0 2 4 6 8 10



11 Auditorium/Sala polifunzionale - 12 Ateliers - 13 Uffici - 14 Piazza - 15 Passerella



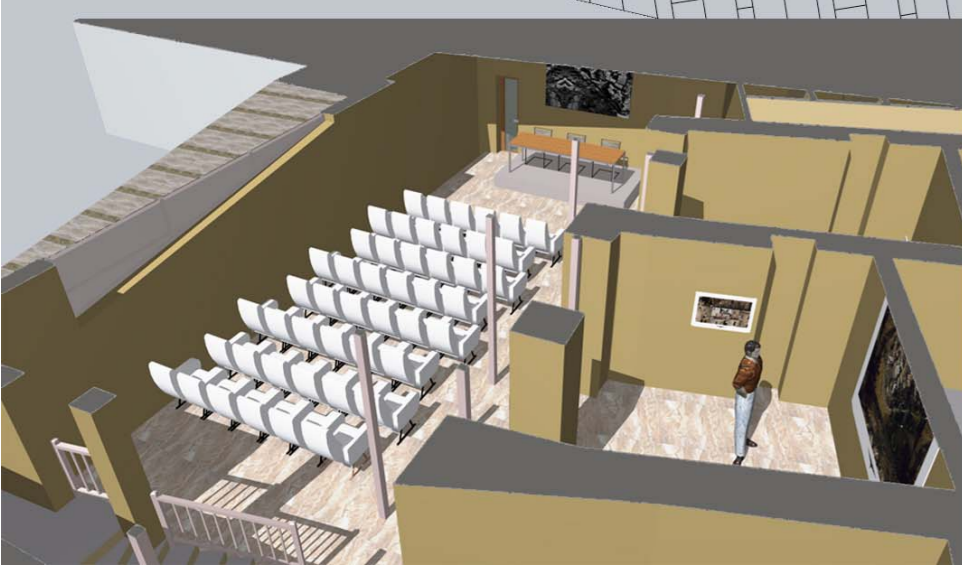
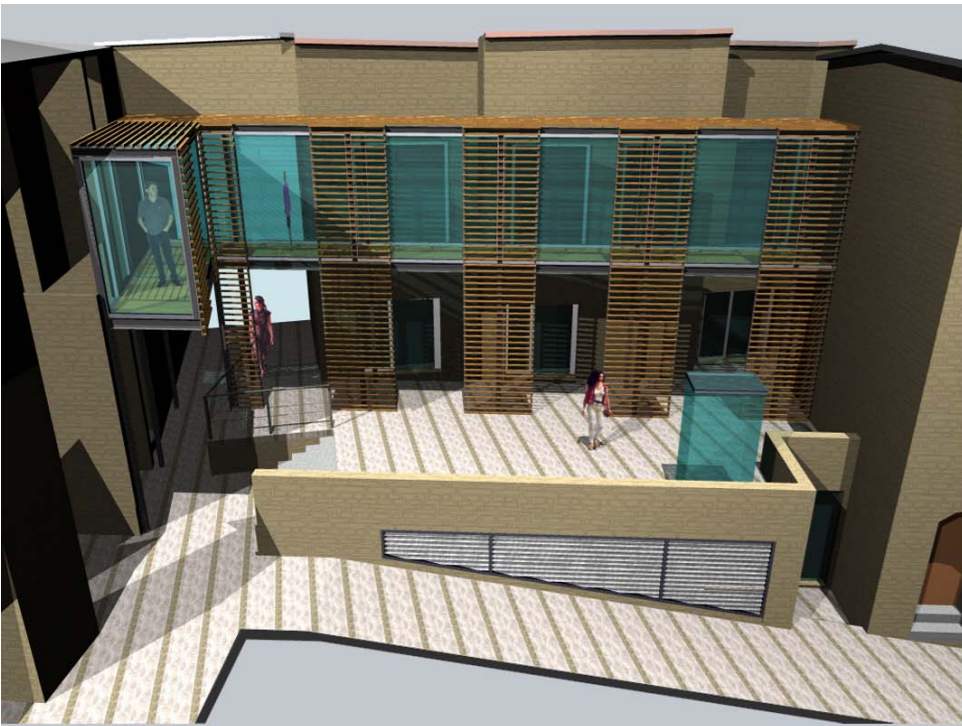
0 1 2 3 4 5m



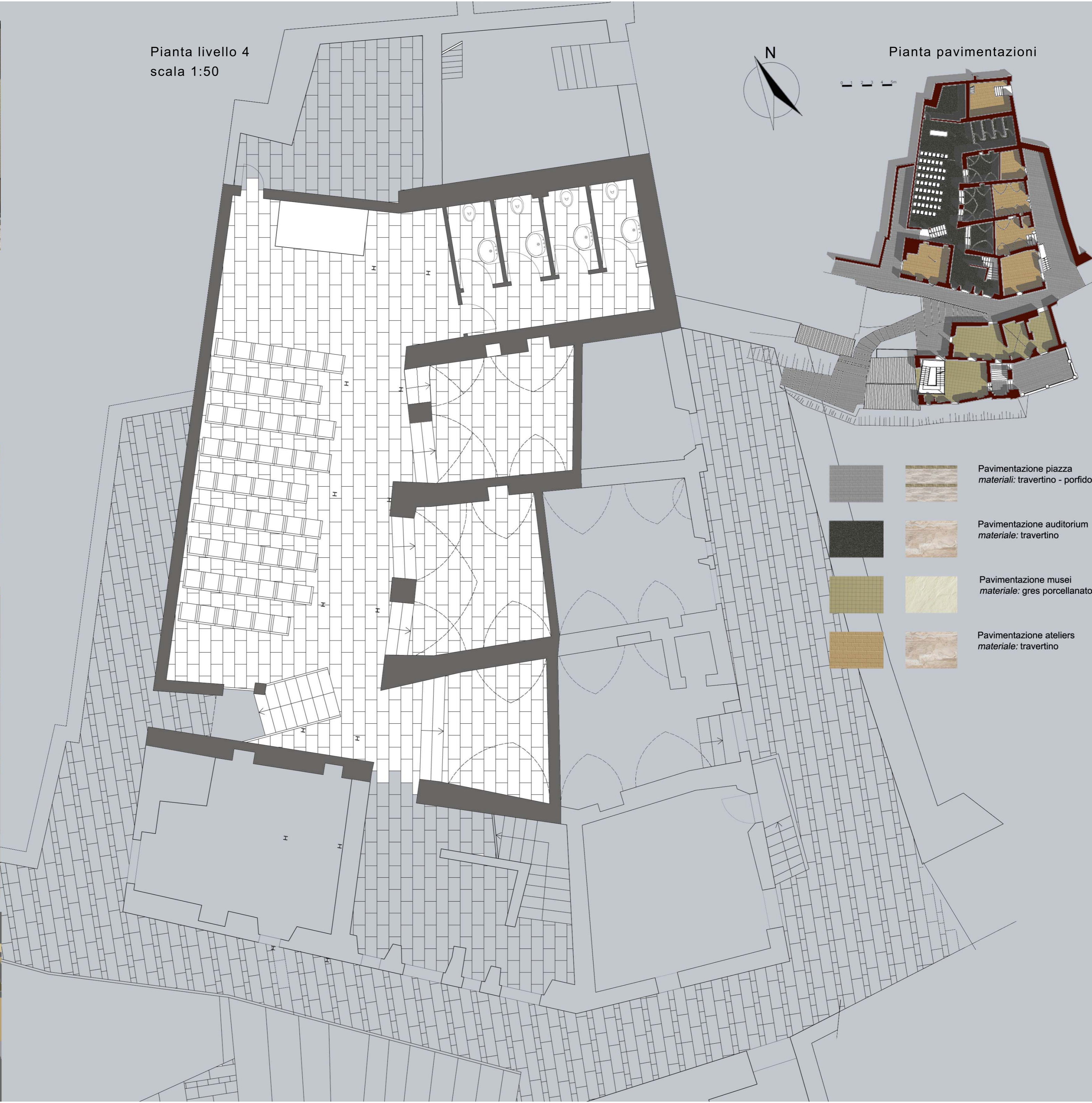
PROSPETTO NORD - OVEST

0 1 2 3 4 5m











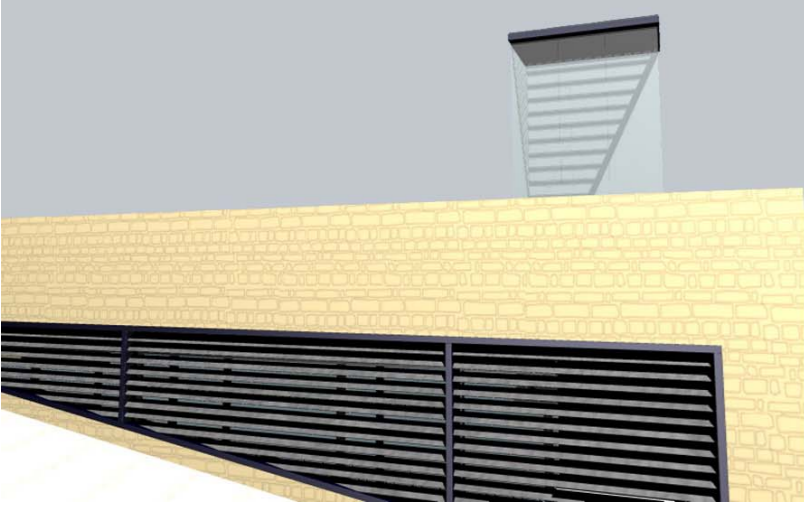
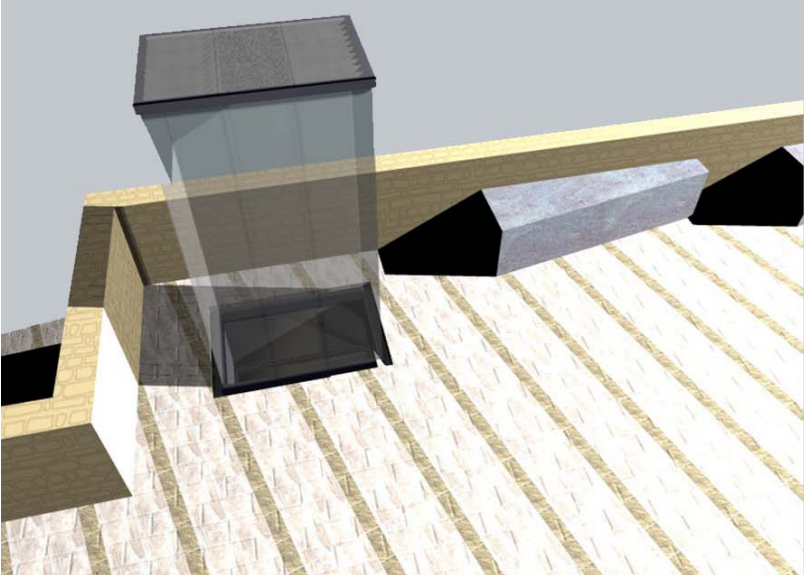
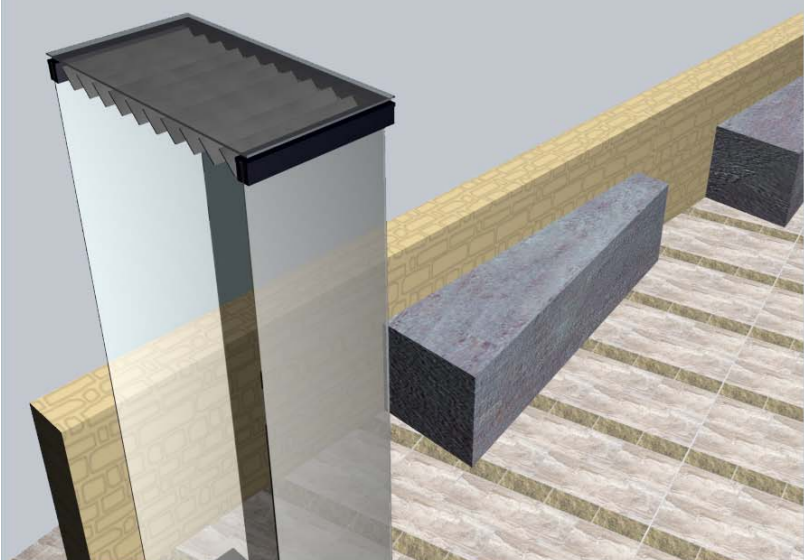
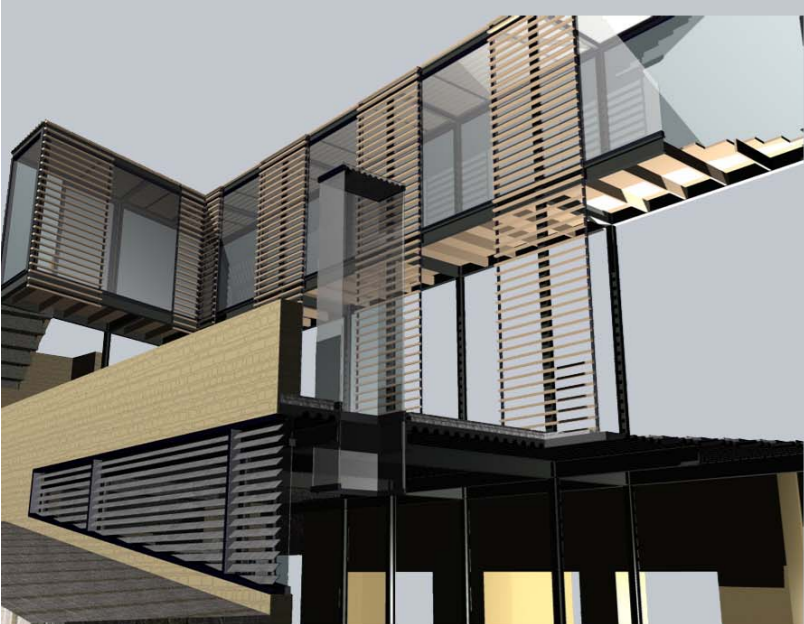


Pianta livello 4
scala 1:50

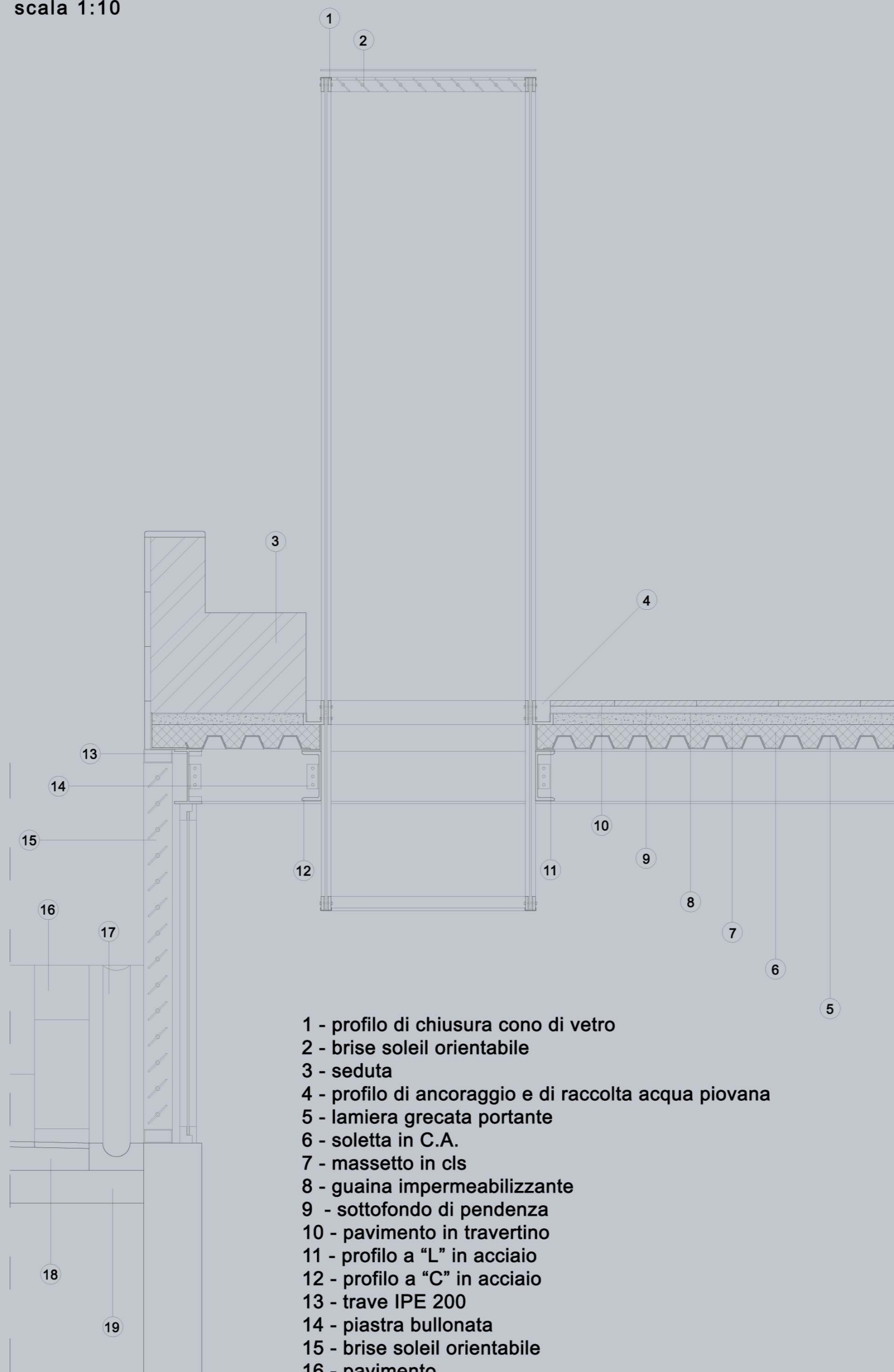


Pianta pavimentazioni

- | | | |
|---|---|--|
|  |  | Pavimentazione piazza
materiali: travertino - porfido |
|  |  | Pavimentazione auditorium
materiale: travertino |
|  |  | Pavimentazione musei
materiale: gres porcellanato |
|  |  | Pavimentazione ateliers
materiale: travertino |

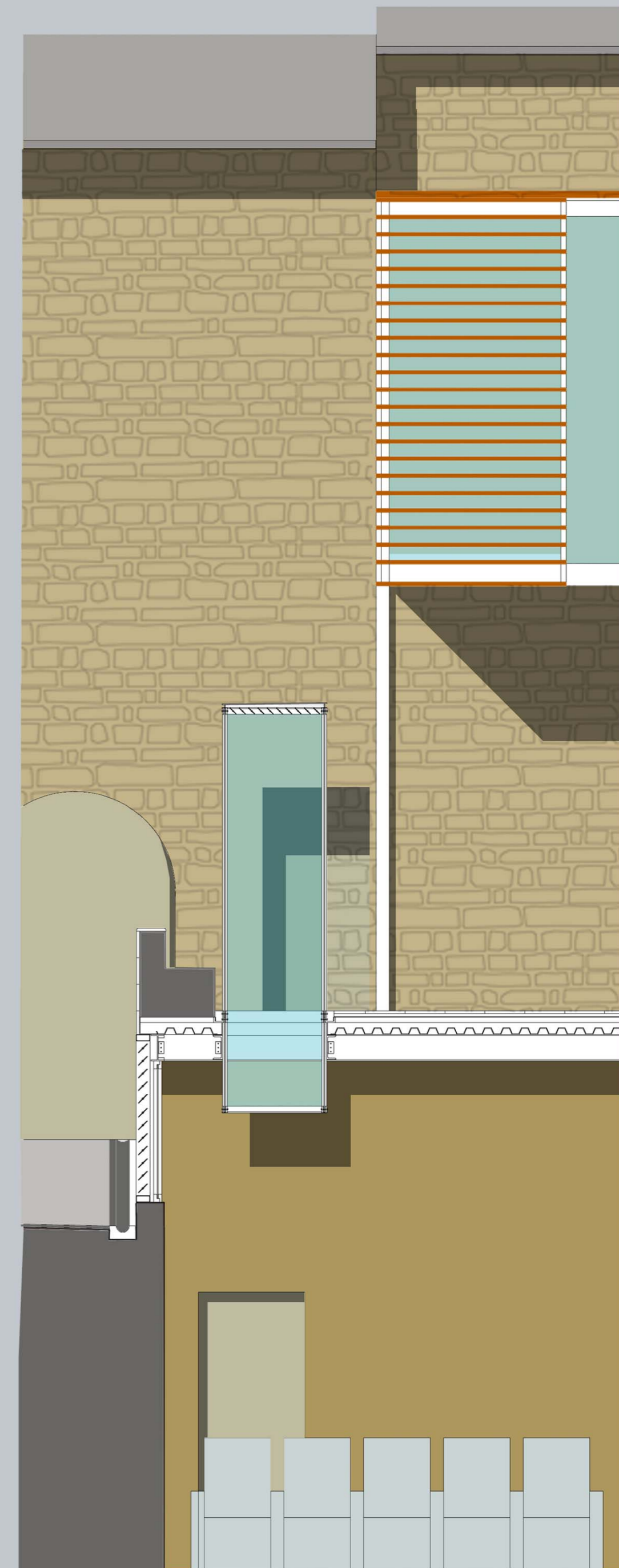


Sezione particolare
scala 1:10

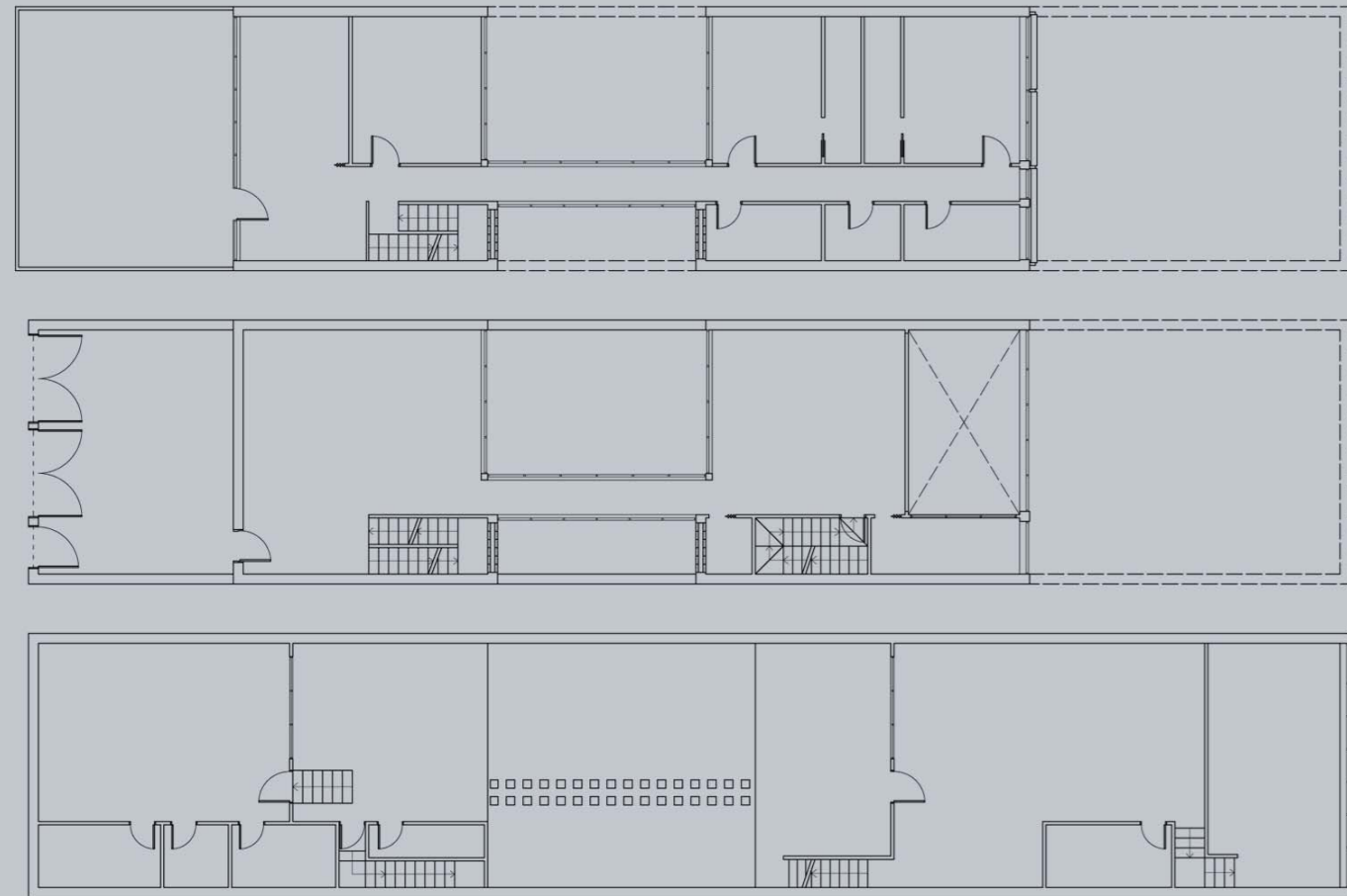


- 1 - profilo di chiusura cono di vetro
- 2 - brise soleil orientabile
- 3 - seduta
- 4 - profilo di ancoraggio e di raccolta acqua piovana
- 5 - lamiera grecata portante
- 6 - soletta in C.A.
- 7 - massetto in cls
- 8 - guaina impermeabilizzante
- 9 - sottofondo di pendenza
- 10 - pavimento in travertino
- 11 - profilo a "L" in acciaio
- 12 - profilo a "C" in acciaio
- 13 - trave IPE 200
- 14 - piastra bullonata
- 15 - brise soleil orientabile
- 16 - pavimento
- 17 - canale di scolo acqua piovana
- 18 - massetto di pendenza
- 19 - soletta armata

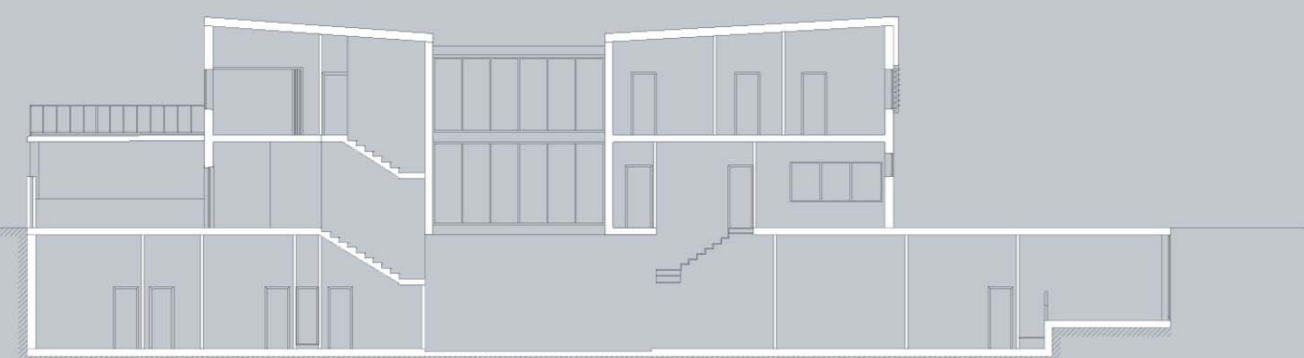
Sezione D-D'
scala 1:25



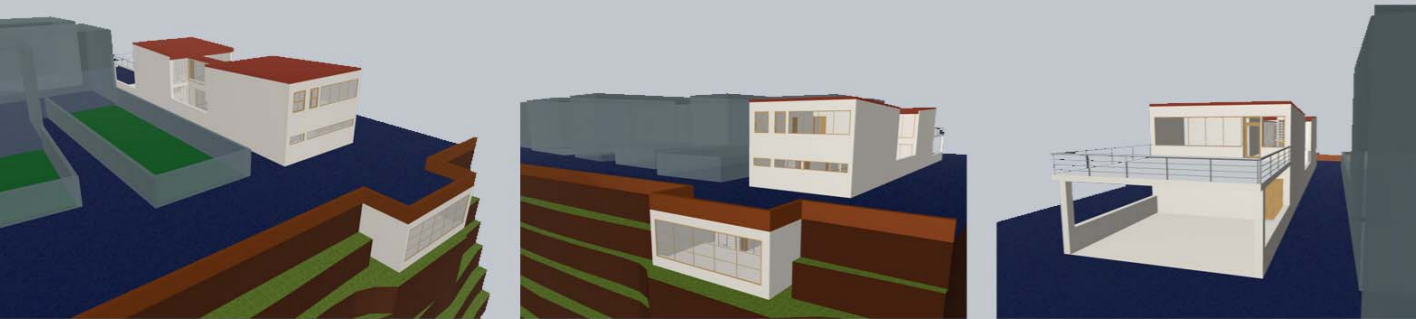
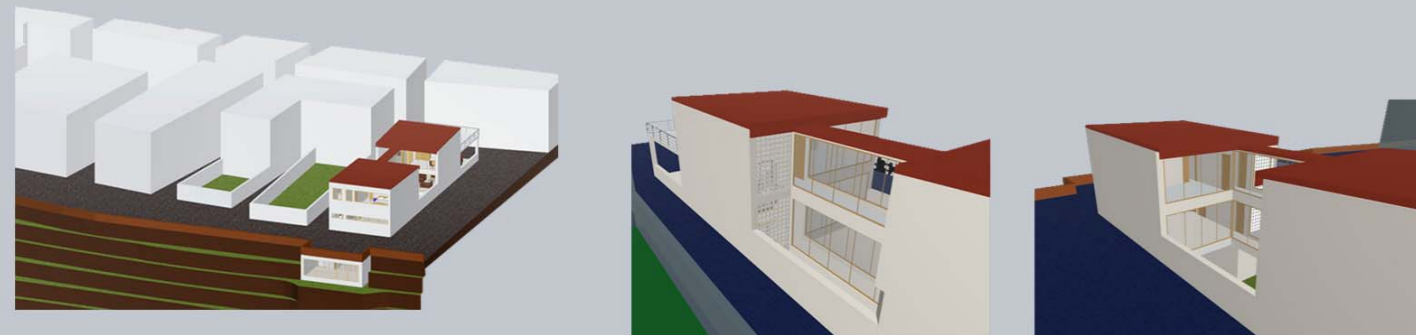
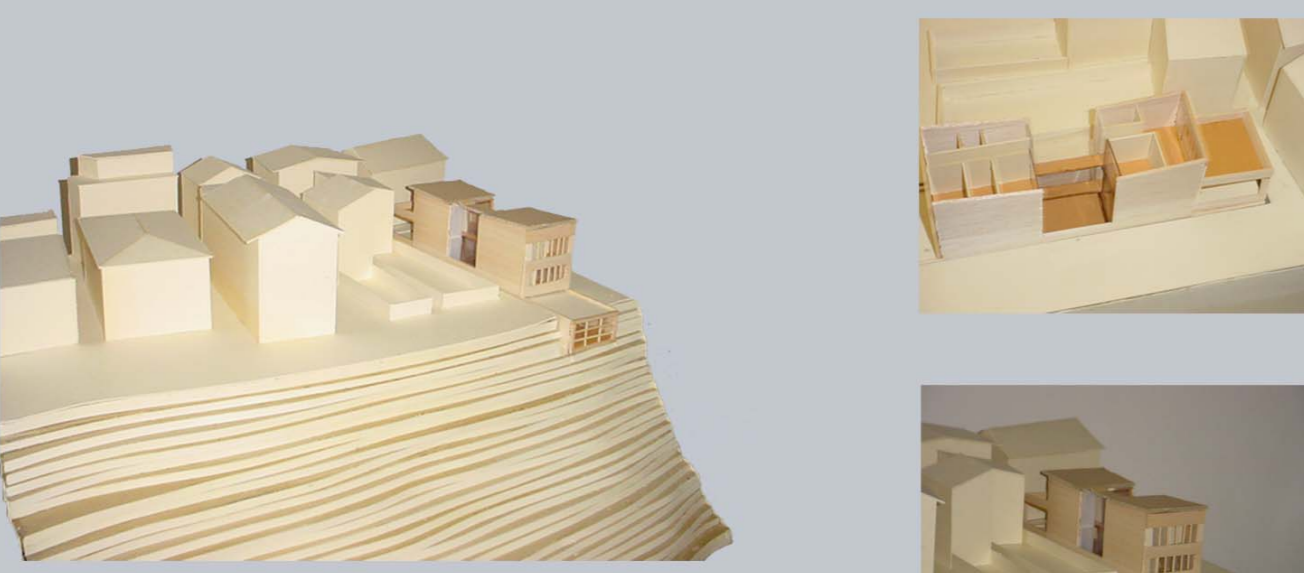
progetto di una residenza unifamiliare



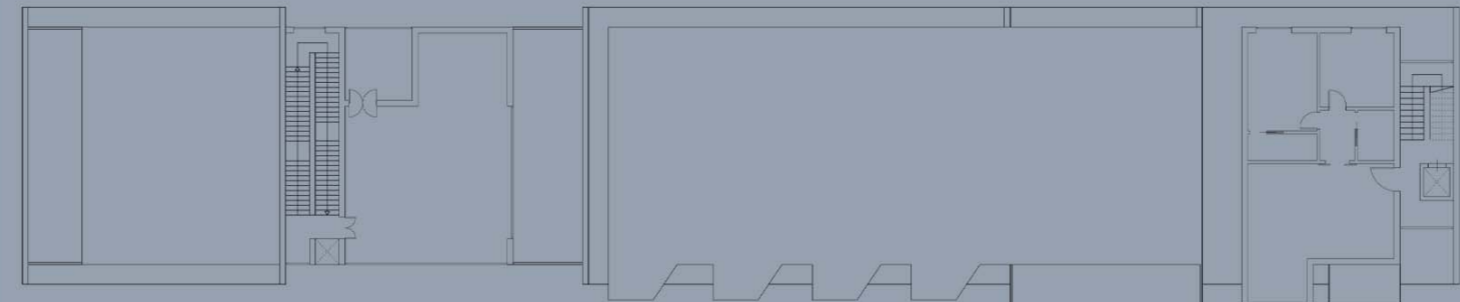
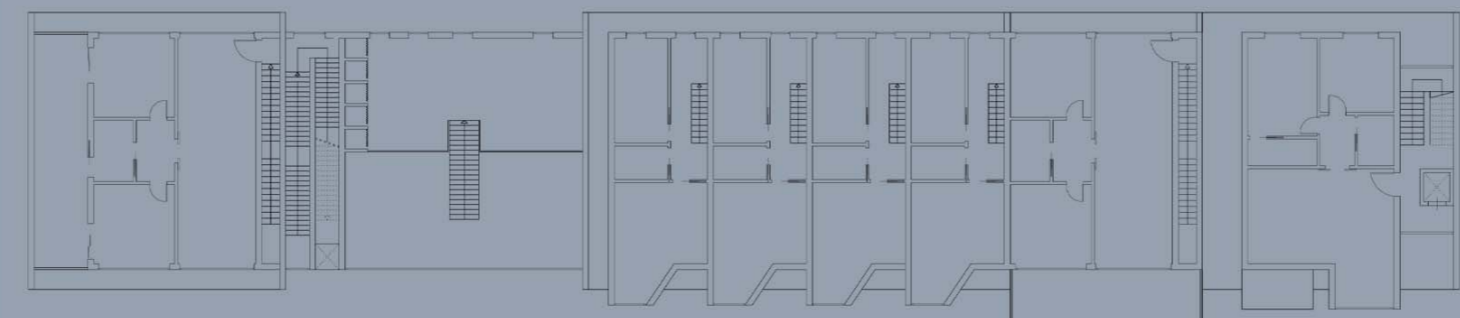
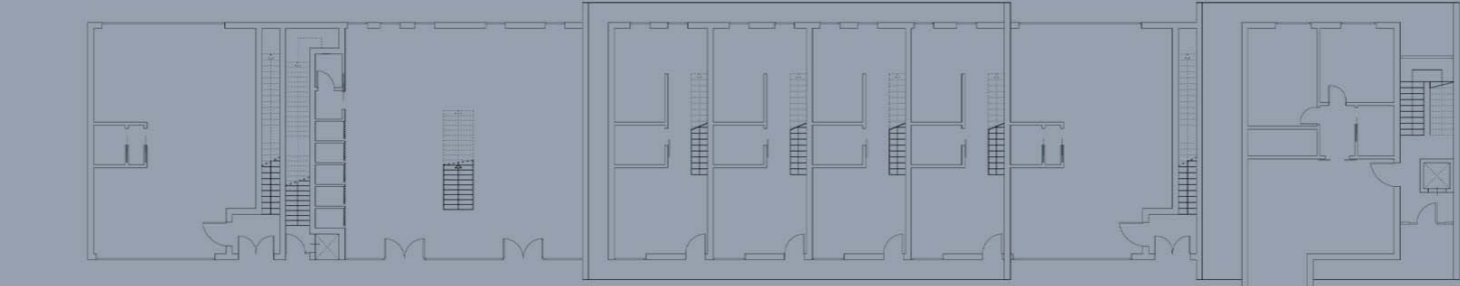
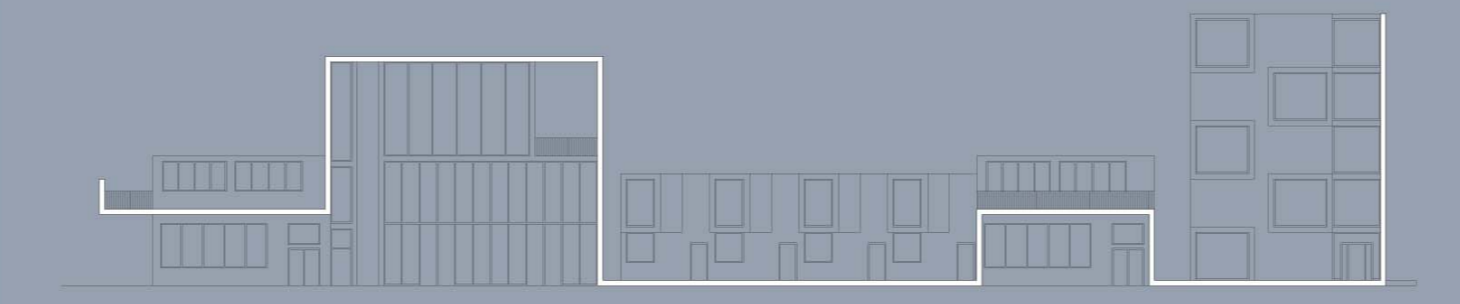
0 2 4 6 8 10m



0 5m



progetto di un edificio residenziale e commerciale



0 2 4 6 8 10m



progetto di un quartiere residenziale



0 2 4 6 8 10m

